

EN 60598-1	230V / 50Hz	IP 20			RoHS	9W / 60W
------------	-------------	-------	--	--	------	----------

Domeniul de utilizare: Iluminatul ornamental de interior

Descriere:

Corp: Armătură din tablă de oțel vopsită cu pulbere

Dispensor: Din PC, fixat cu șuruburi ornamentale prin intermediul a două capace din tablă de oțel vopsite cu pulbere

Montaj: Aparent / aplicat

Sursa: Lampă incandescentă max. 60w, compactă (TC-S), lampă halogen eco-clasică (LH)

Dulie: E27, G23

Standard: SR EN 60598-1

Application: Indoor decorative lighting

Description:

Body: Steel sheet body painted

Diffuser: PC diffuser, fastened to the body with ornamental screws by means of two brassed powder painted steel sheet lids

Mounting: Visible / wall bracket

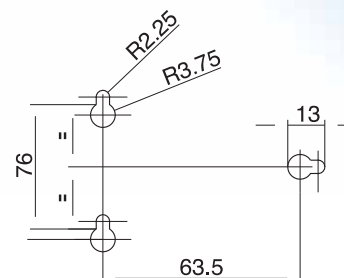
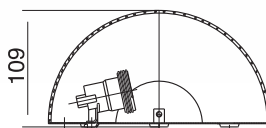
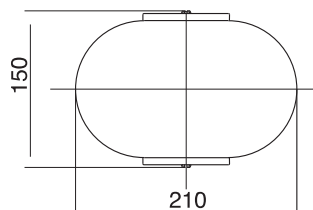
Source: Max. 60w incandescent, compact lamp (TC-S), eco-classic halogen lamp (LH)

Socket: E27, G23

Standard: SR EN 60598-1



AE-03



Tip/Type	Cod produs/ Product code	Dimensiuni/Dimensions [mm]		Masa/ Weight [kg]	Lampa/ Lamp
		L	I		
1x60W	44241041	210	150	0.60	A60 / LH
1x9W	44241042	210	150	0.85	TC-S
2x9W	44241043	210	150	0.85	



EN 60598-1 230V / 50Hz IP 20 RoHS 18W / 26W



APL-01

Domeniul de utilizare: Iluminatul ornamental de interior, iluminat indirect și direct

Descriere:

Corp: Subansamblu suport din tablă de oțel vopsită cu pulbere

Apărător metallic: frontal, cu fante, pe care este aplicată o folie din PVC sau material textil

Montaj: Aparent / aplicat

Sursa: Lampă compactă (TC-D)

Dulie: G24d2, G24d3

Standard: SR EN 60598-1

Application: Indoor decorative lighting, indirect and direct lighting

Description:

Body: Steel sheet support subunit painted with powder

Metallic front protector: with slots and PVC or textile material sheet applied

Mounting: Visible / wall bracket

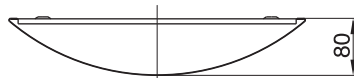
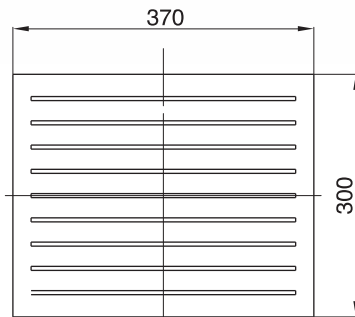
Source: Compact lamp (TC-D)

Socket: G24d2, G24d3

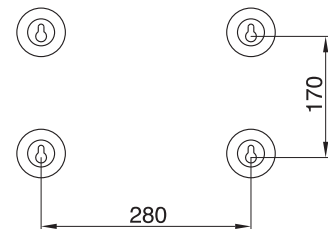
Standard: SR EN 60598-1

APL-02

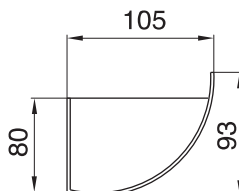
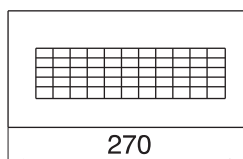
APL-01



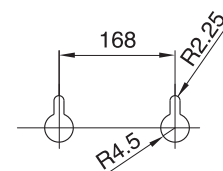
Dimensiuni de montaj/
Mounting dimensions



APL-02



Dimensiuni de montaj/
Mounting dimensions



Tip/Type	Cod produs/ Product code	Factor de putere/ Power factor	Dimensiuni/Dimensions [mm]			Masa/ Weight [kg]	Lampa/ Lamp
			L	I	h		
APL 01 1x18W	44221031	0.50	370	300	80	1.90	
APL 01 1x26W	44231031	0.50	370	300	80	2.16	
APL 02 1x18W	44241128	0.50	270	80	80	1.20	



EN 60598-1	230V / 50Hz	IP 40	IK 02			960°C	CE	RoHS	28W / 38W
------------	-------------	-------	-------	--	--	-------	----	------	-----------

Domeniul de utilizare: Iluminatul general de interior

Application: General indoor lighting

Descriere:

Description:

Corp: Din PC cu rezistență termică ridicată

Body: PC body with high thermal resistance

Reflector: Din PC cu indice de reflexie ridicat

Reflector: PC reflector with high reflection value

Dispensor: Din PC transparent cu suprafețe prismatice pe interior

Diffuser: Transparent PC diffuser with prismatic interior surfaces

Montaj: Aplicat

Mounting: Wall bracket

Sursa: Lampă compactă TC-DD

Source: Compact lamp TC-DD

Dulie: GR 10q-4pin

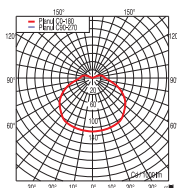
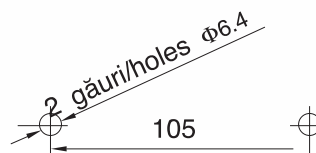
Socket: GR10q-4pin

Standard: SR EN 60598-1

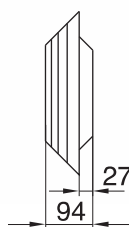
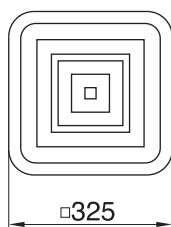
Standard: SR EN 60598-1



**Dimensiuni de montaj /
Mounting dimensions**



DUAL-01



Tip/Type	Cod produs/ Product code	Factor de putere/ Power factor	Dimensiuni/Dimensions [mm]			Masa/ Weight [kg]	Lampa/ Lamp
			L	I	h		
DUAL-01 1x28W	23491011	min. 0.92	325	325	94	1.90	TC-DD
DUAL-01 1x38W	23491020	min. 0.92	325	325	94	1.90	



TEMPORA MARTE

EN 60598-1	230V / 50Hz	IP 42	IP 65	IK 02			960°C		RoHS	8W
------------	-------------	-------	-------	-------	--	--	-------	--	------	----



CIF-02
TEMPORA

CIF
MARTE

Domeniul de utilizare: Iluminatul general de interior

Descriere:

Corp: Din PC cu rezistență termică ridicată

Reflector: Din PC cu indice de reflexie ridicat

Dispensor: Din PC transparent cu suprafețe prismatice pe interior

Montaj: Aplicat

Sursa: Lampă fluorescentă T5

Dulie: G5

Standard: SR EN 60598-1

Application: General indoor lighting

Description:

Body: PC body with high thermal resistance

Reflector: PC reflector with high reflection value

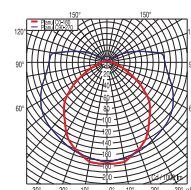
Diffuser: Transparent PC diffuser with prismatic interior surfaces

Mounting: Wall bracket

Source: Fluorescent lamp T5

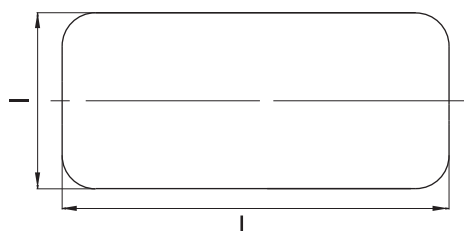
Socket: G5

Standard: SR EN 60598-1

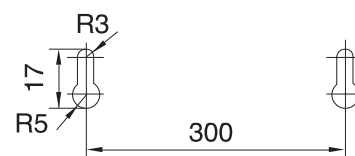


pg.311

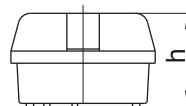
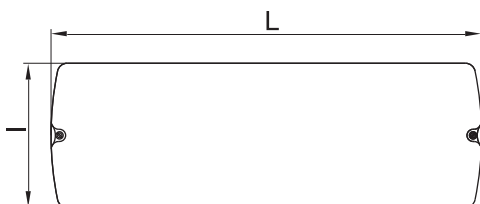
CIF-02
TEMPORA



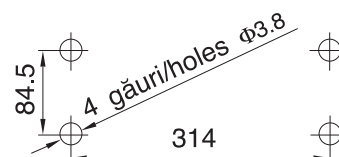
**Dimensiuni de montaj /
Mounting dimensions**



CIF
MARTE



**Dimensiuni de montaj /
Mounting dimensions**



Tip/Type	Cod produs/ Product code	Factor de putere/ Power factor	Dimensiuni/Dimensions [mm]			Masa/ Weight [kg]	Lampa/ Lamp
			L	l	h		
CIF 02	1x8W	21411037	0.50	350	160	0.80	T5 ϕ 16
	2x8W	21411020	0.50	350	160	1.00	
CIF	1x8W	21411027	0.50	335	119	1.50	