

A photograph of industrial machinery, likely a large metal tank or vessel. On the left, there is a circular pressure gauge with a white face and a black needle. To its right, a blue cable is connected to a small electronic device with a green circular component. The background shows more industrial structures and a blue sky.

# SIMATIC PDM

Version 6.0 SP1



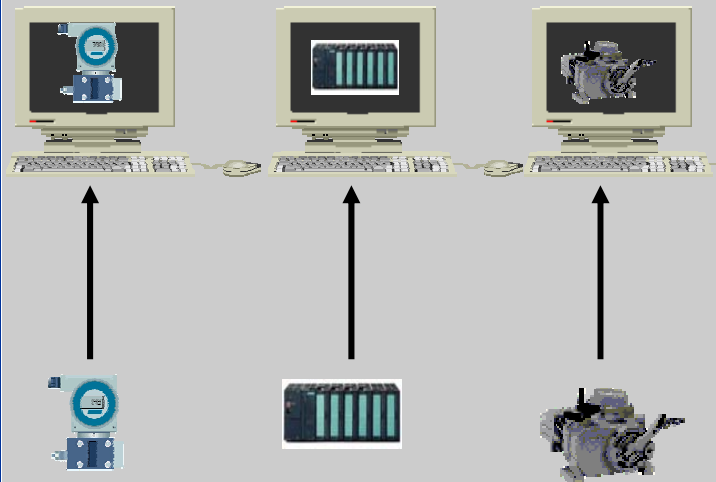
# SIMATIC PDM

## A new, standardized approach

→ Customer requirements as a base of the development

**Before PDM**

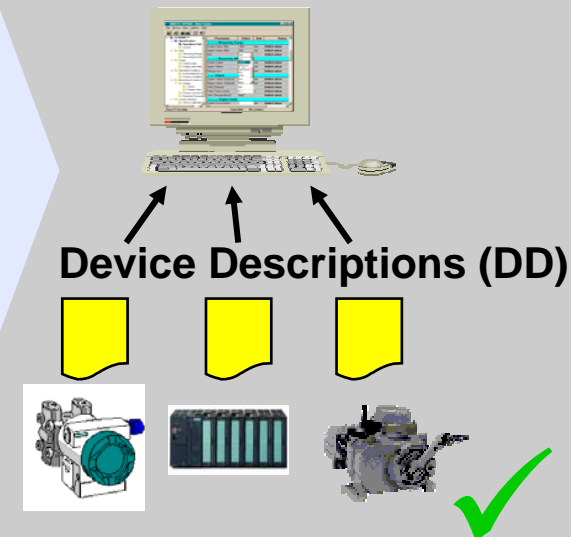
Different programs  
for operation of the  
associated  
field devices and  
components



**One** piece of  
software  
for  
**standardized**  
operation  
of all field  
devices

**Now**

SIMATIC PDM  
for  
operation of all field devices  
and components  
based on EDD technology



Setting a New  
Standard  
of Integration

Requirements

EDD

Device Integration

User Interface

Communication

Functions

Diagnosis

Product

Summary

**SIEMENS**



# Requirements of NAMUR

Setting a New  
Standard  
of Integration

Requirements

EDD

Device Integration

User Interface

Communication

Functions

Diagnosis

Product

Summary

## NE 105 „ Specifications for Integrating Fieldbus Devices in Engineering Tools for Field Devices“

- Uniform standards
  - for Device Description
  - for Interfaces
- Investment safety
  - Cross-Platform Compatibility of the Device Description
  - Compliance compatibility rules of the Device Description
  - Compliance compatibility rules of the Tool
- Standard procedure for the integration of new devices
  - independent of the manufacturer
  - independent of the communication

NAMUR – Normenarbeitsgemeinschaft für Meß- und Regelungstechnik  
in der Chemischen Industrie  
NE – NAMUR - Recommendation



# SIMATIC PDM - The Process Device Manager

Setting a New  
Standard  
of Integration

Requirements

EDD

Device Integration

User Interface

Communication

Functions

Diagnosis

Product

Summary

→ Customer requirements as a base of the development



**SIMATIC PDM**  
is **the universal tool** for  
commissioning,  
maintenance,  
diagnostics  
and display  
for field devices and  
automation components.



Can be integrated into  
**SIMATIC S7 / PCS 7**  
or run on a **stand alone basis**



**SIEMENS**

# EDD / EDDL

Setting a New  
Standard  
of Integration

Requirements

EDD

Device Integration

User Interface

Communication

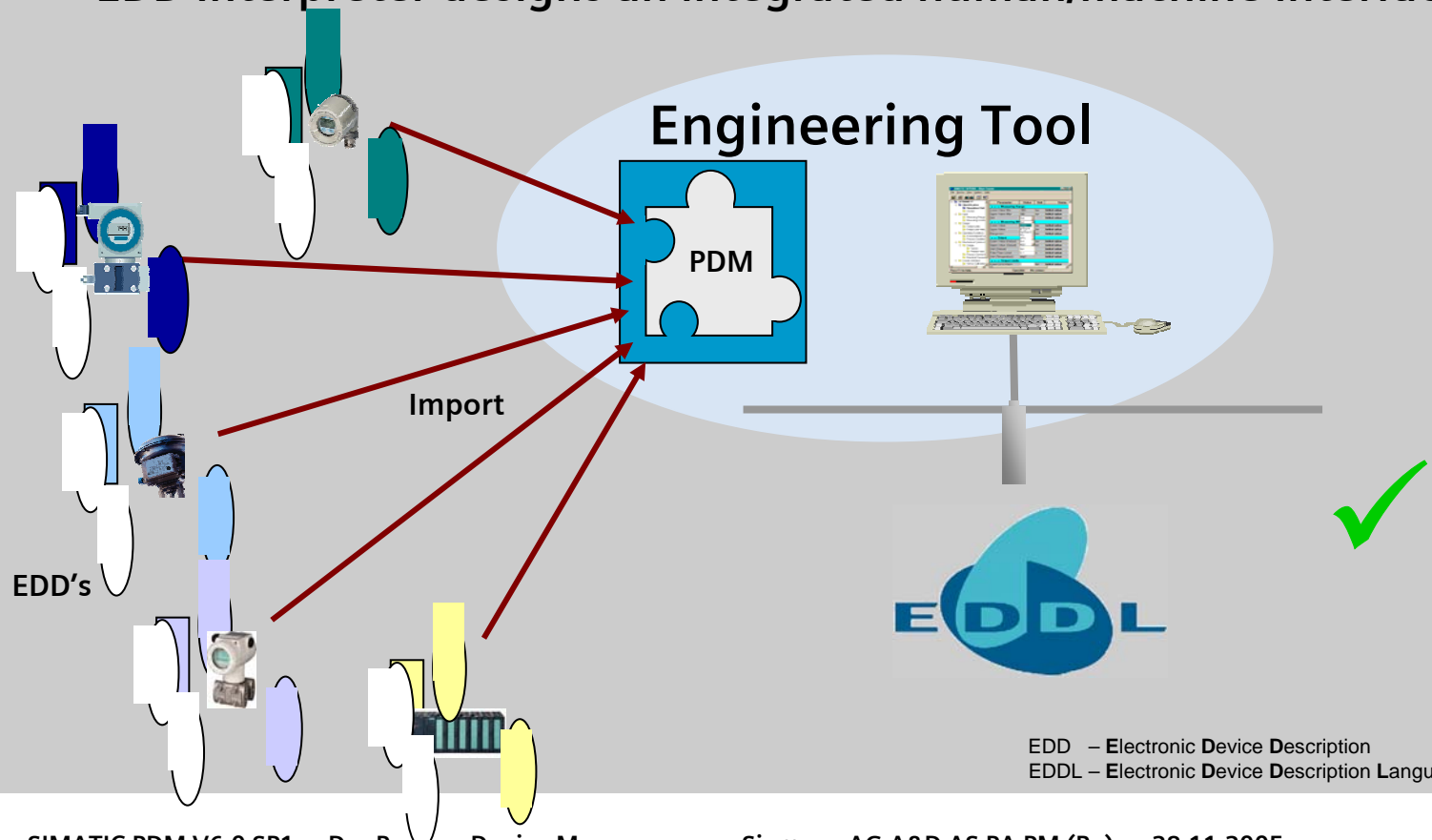
Functions

Diagnosis

Product

Summary

- EDDL is the language used for description
- EDD represents the actual device description
- EDD Interpreter designs an integrated human/machine interface



EDD – Electronic Device Description  
EDDL – Electronic Device Description Language

**SIEMENS**



# What is actually the EDD?

➔ Textual description of the field devices in the language EDDL

A composition of different information about a device generally is understood by the EDD, however:

- Device Description (EDD)
- Dictionary (user languages)
- Helps (for operation and functions)
- Manuals (technical documentation)
- Communication Descriptions (e.g. PROFIBUS – GSD)
- Pictures

EDD – Electronic Device Description  
EDDL – Electronic Device Description Language





# Field of application: EDD / EDDL



→ universal and also for very complex field devices

- Text interface ideal for devices where the diagnostic, parameterization and optimization functions are realized within the device itself. The EDD is responsible for interpretation, representation and parameterization.

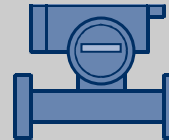
■



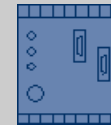
Drive



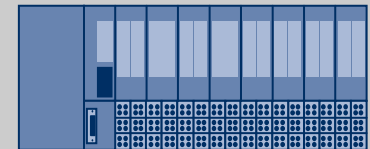
Positioner



Transmitter



Switch



Remote I/O

## Strengths:

- The description of the device parameters can be used unchanged over many years
- This type of device description is independent of the operating system used for the engineering
- The human/machine interface within an engineering system is standardized for all devices
- All data for all field devices is openly available for further processing



Setting a New  
Standard  
of Integration

Requirements

EDD

Device Integration

User Interface

Communication

Functions

Diagnosis

Product

Summary

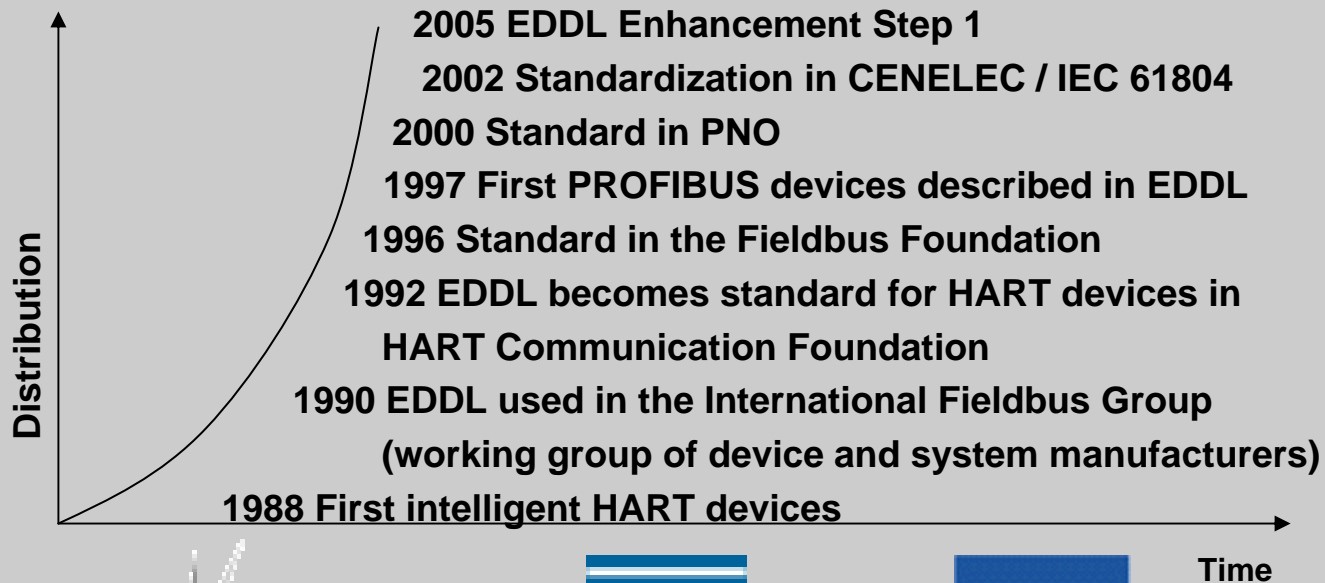
**SIEMENS**



# Standardization EDDL



→ Worldwide a success story



- Today, more than 1200 device types from around 110 manufacturers are already described in EDDL.



Setting a New  
Standard  
of Integration

Requirements

EDD

Device Integration

User Interface

Communication

Functions

Diagnosis

Product

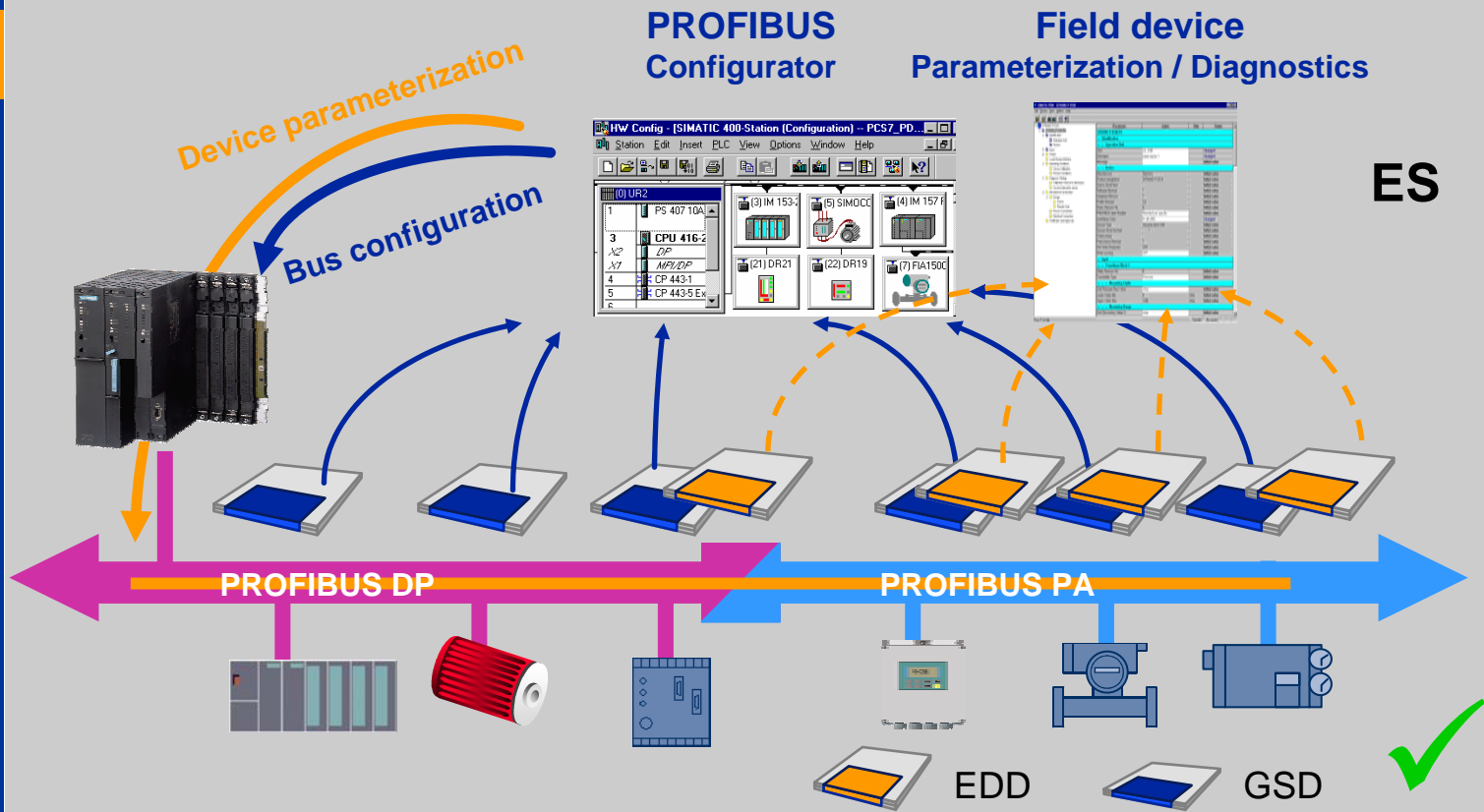
Summery

**SIEMENS**



# Integration into the system

- GSD files contain the communication parameters
- EDD files contain the device parameters and visualization structure and describe the device behavior





# The real Problem of Device Integration

Setting a New  
Standard  
of Integration

Requirements

EDD

Device Integration

User Interface

Communication

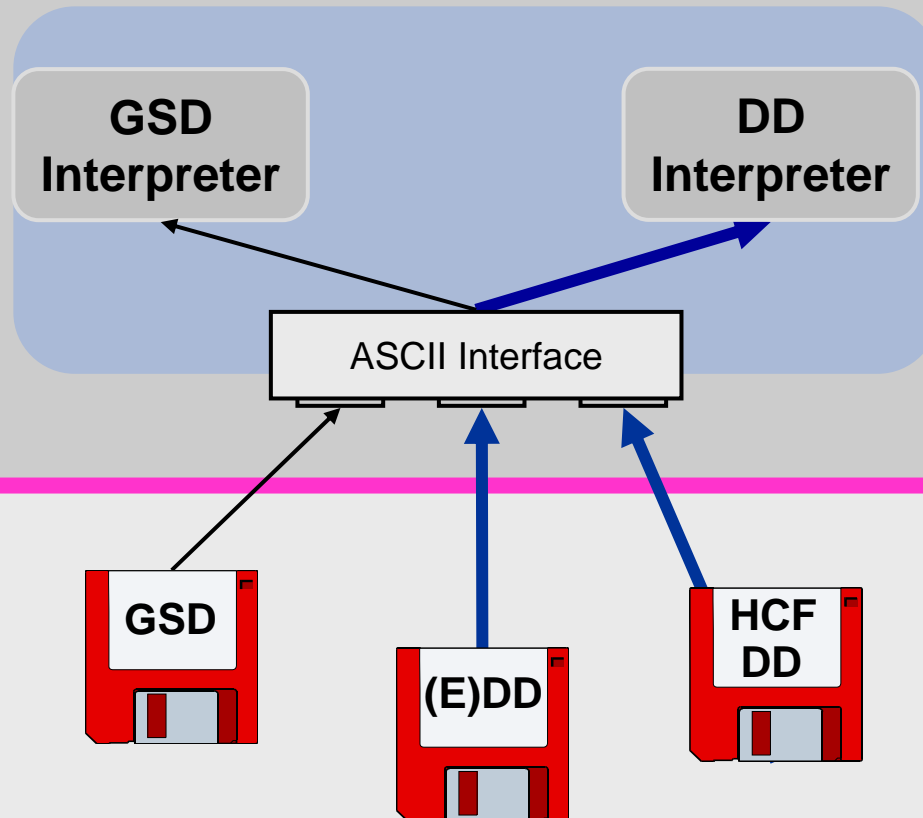
Functions

Diagnosis

Product

Summary

- EDDL is the only device description language standardized in the IEC.
- IEC 61804 the only standardized method for the device description.



■ System supplier

Responsibility

=> IEC 61804-2

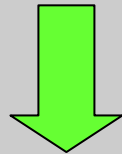
■ Device Supplier

Reality

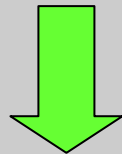


# How do you achieve a new EDD in Simatic PDM?

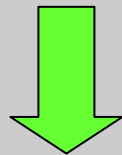
➔ Worldwide simply, quickly, safety and excellent value for money.



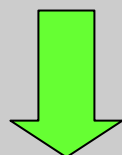
- **Decision in favor of intelligent field components**
  - Profile use or full integration
  - Communication definition



- **Order from device manufacturer**
  - Device available with EDD (manufacturer produces EDD, if necessary using service provider)
  - Manufacturer declares compliance with specifications
  - Manufacturer declares compatibility with SIMATIC PDM (quality mark)
  - Device is pre-parameterized on request



- **Delivery of device**
  - Delivery with enclosed diskette for EDD, GSD and documentation
  - Provision via e-mail, Internet etc.



- **Import into PDM**
  - Data copied onto computer
  - Execution of import function in PDM



Setting a New  
Standard  
of Integration

Requirements

EDD

Device Integration

User Interface

Communication

Functions

Diagnosis

Product

Summary

**SIEMENS**



# SIMATIC PDM

## Field device integration

Setting a New  
Standard  
of Integration

Requirements

EDD

Device Integration

User Interface

Communication

Functions

Diagnosis

Product

Summery

**SIEMENS**

**ABB**

**VEGA**

**metso  
automation**

**Knick  
ROSEMOUNT  
SICK**

**Bopp&Reuther**

**Endress + Hauser**

**PEPPERL+FUCHS**

**SIEMENS**

**KROHNE**

**smar**

**YOKOGAWA**

**CEAG**

**auma**

**SAMSON**

**WIKA**

**Invensys**

**SIPOS**

**Berthold**

**Bürkert**

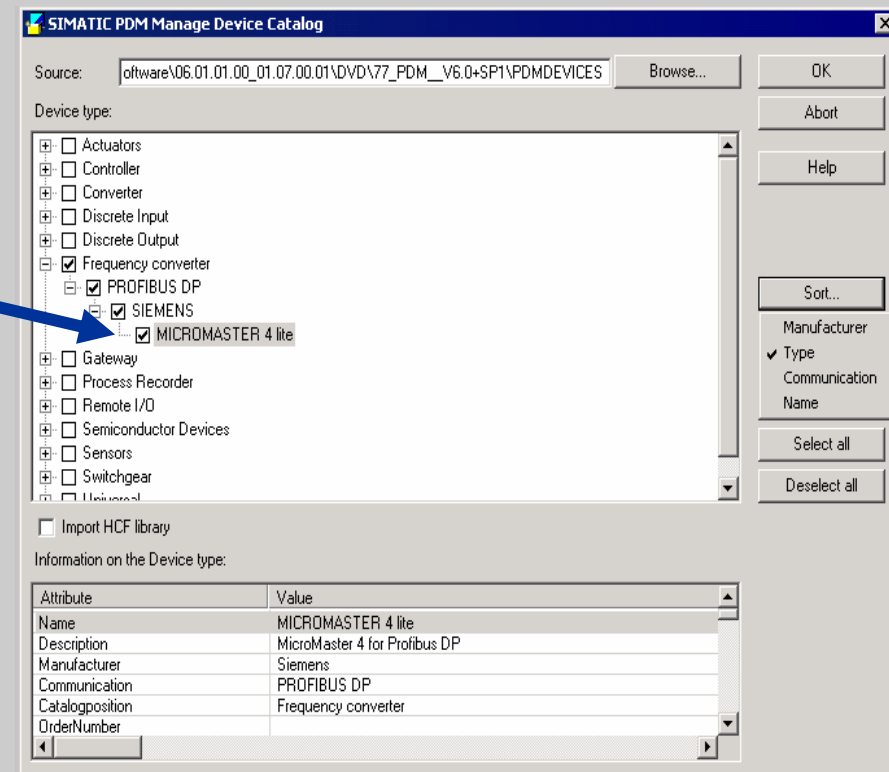
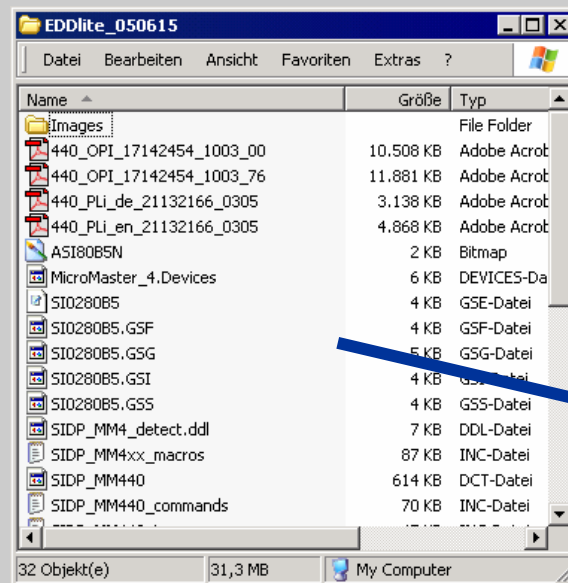
- Over 1200 different field device types are integrated with SIMATIC PDM
- These field devices come from more than 150 different manufacturers
- Current information on field devices that can be parameterized using SIMATIC PDM is available on the Internet



# SIMATIC PDM

## simple Device Integration

➔ from CD, DVD or Internet and without PC shutdown



- textual descriptions
- operation system-independent
- pure importation



Setting a New  
Standard  
of Integration

Requirements

EDD

Device Integration

User Interface

Communication

Functions

Diagnosis

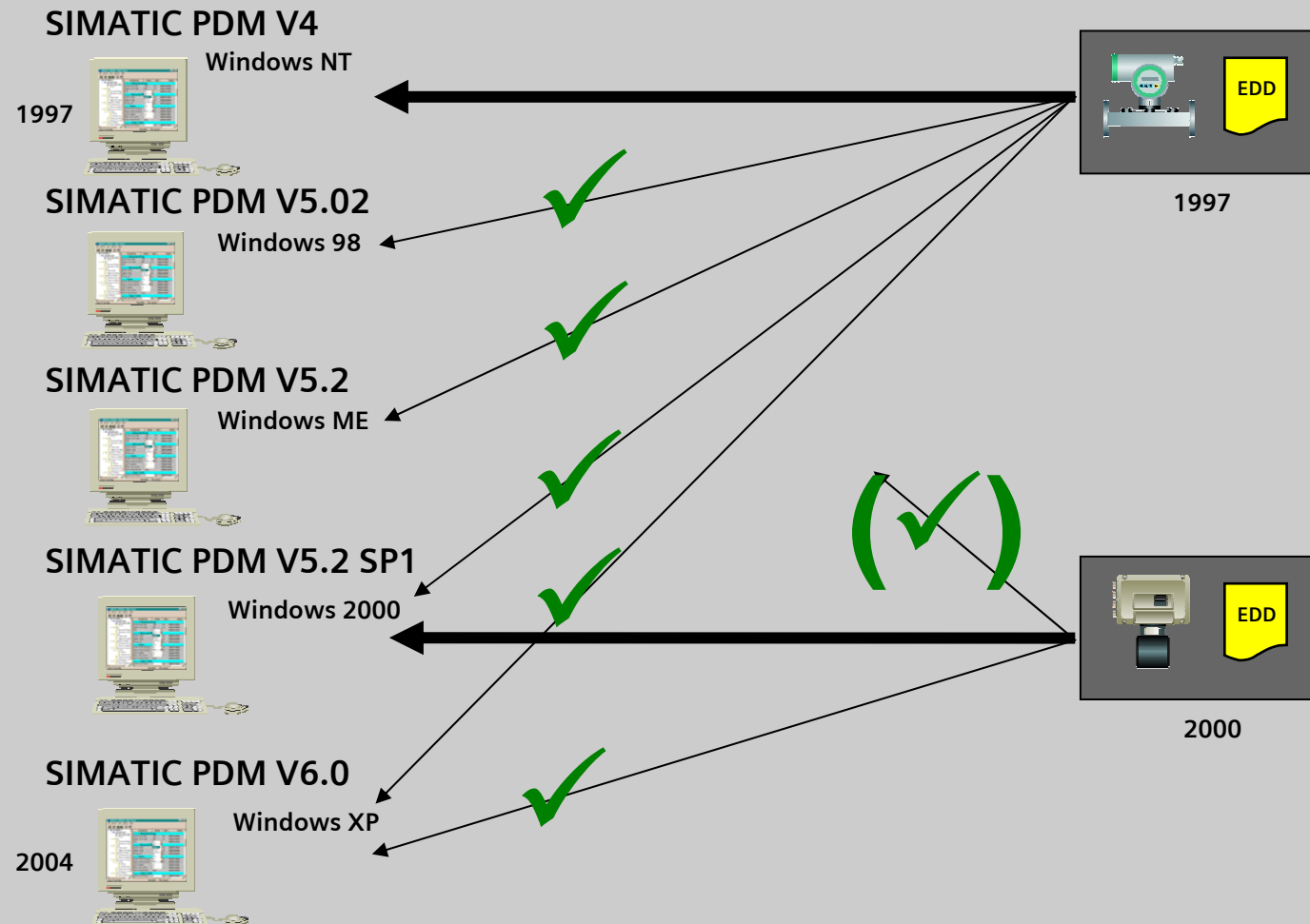
Product

Summary

**SIEMENS**

# EDD - operation system-independent

→ Common life cycle of field device and device description.



Setting a New  
Standard  
of Integration

Requirements

EDD

Device Integration

User Interface

Communication

Functions

Diagnosis

Product

Summary

**SIEMENS**



# Benefits of device integration via EDD

## Setting a New Standard of Integration

Requirements

EDD

## Device Integration

User Interface

Communication

Functions

Diagnosis

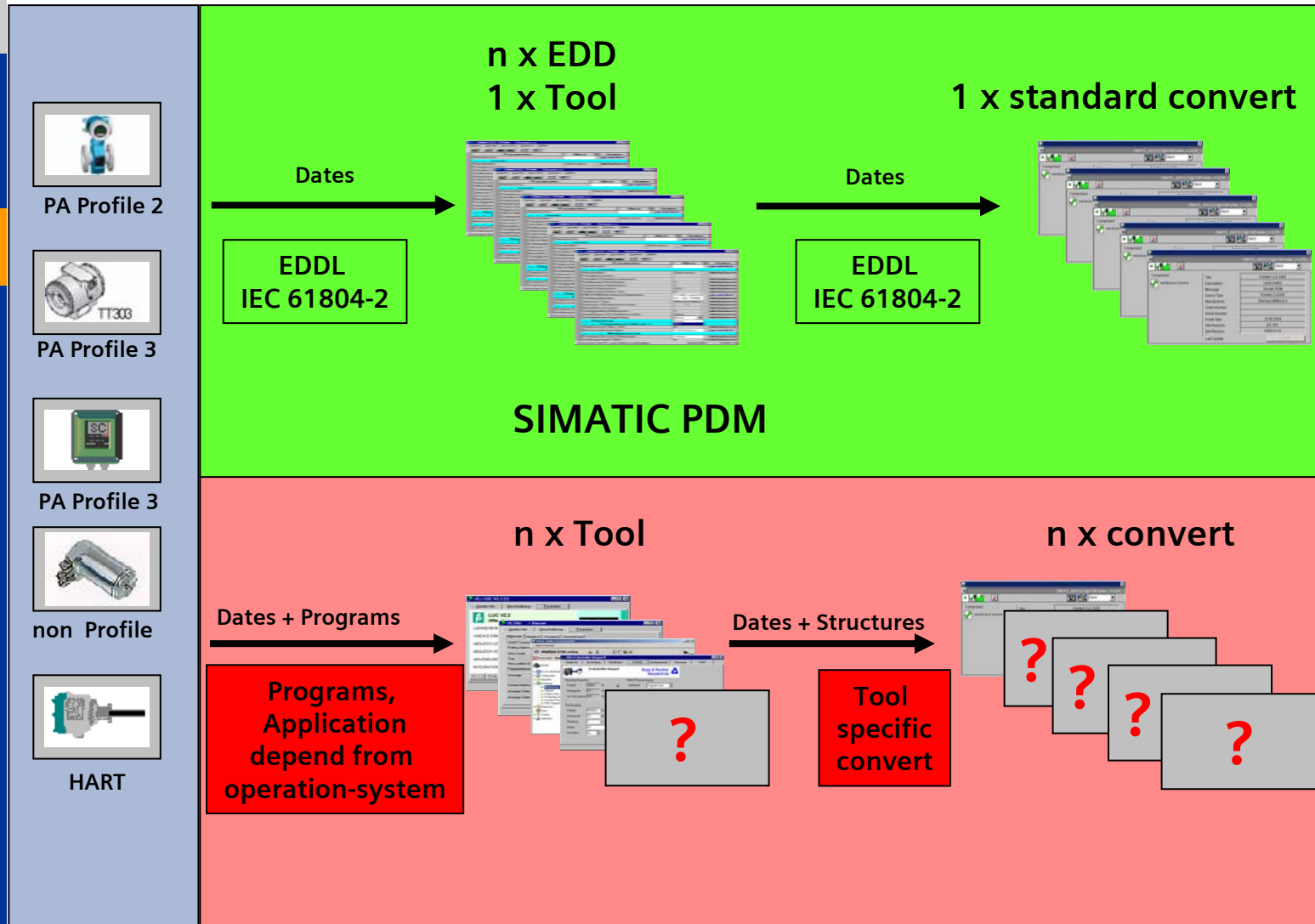
Product

Summary

Field devices

Device tool

Asset Management System



# The EDD as a versatile source of information

Setting a New  
Standard  
of Integration

Requirements

EDD

Device Integration

User Interface

Communication

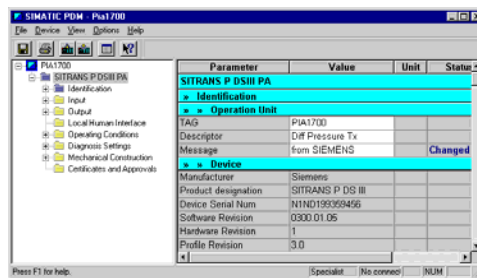
Functions

Diagnosis

Product

Summary

**SIEMENS**



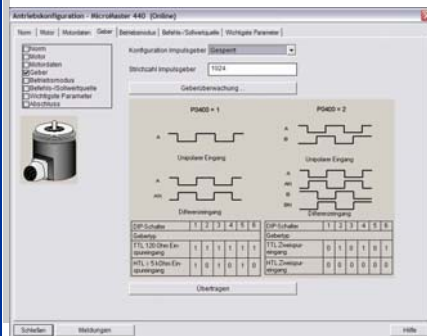
## User profiles

- For maintenance staff with limited access to device parameters
- For specialists with full access to device parameters
- For device-specific user profiles

## Help and documentation

Overview of:

- Variables, dialogs, methods
- Ranges of values, default values, units



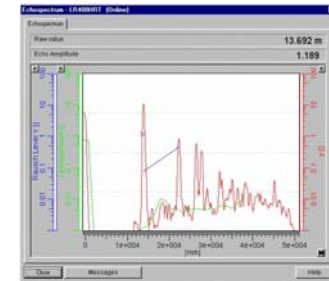
## Engineering

- Configuration of networks, gateways and remote I/Os
- Export / import of device data
- Upload / Download
- Parameterization
- Comparison of Values



## Commissioning

- Address assignment
- Measured value display
- Simulation
- Calibration, adjustment
- Online parameterization
- Device detection for a lifelist



## Operating phase

- Display device status and diagnostic information
- Support device replacement
- Check device identification

## Asset Management

- Prepare information for maintenance, repair and fault elimination

## Catalog and E-commerce

- Ordering data
- Process connection
- Manufacturer information

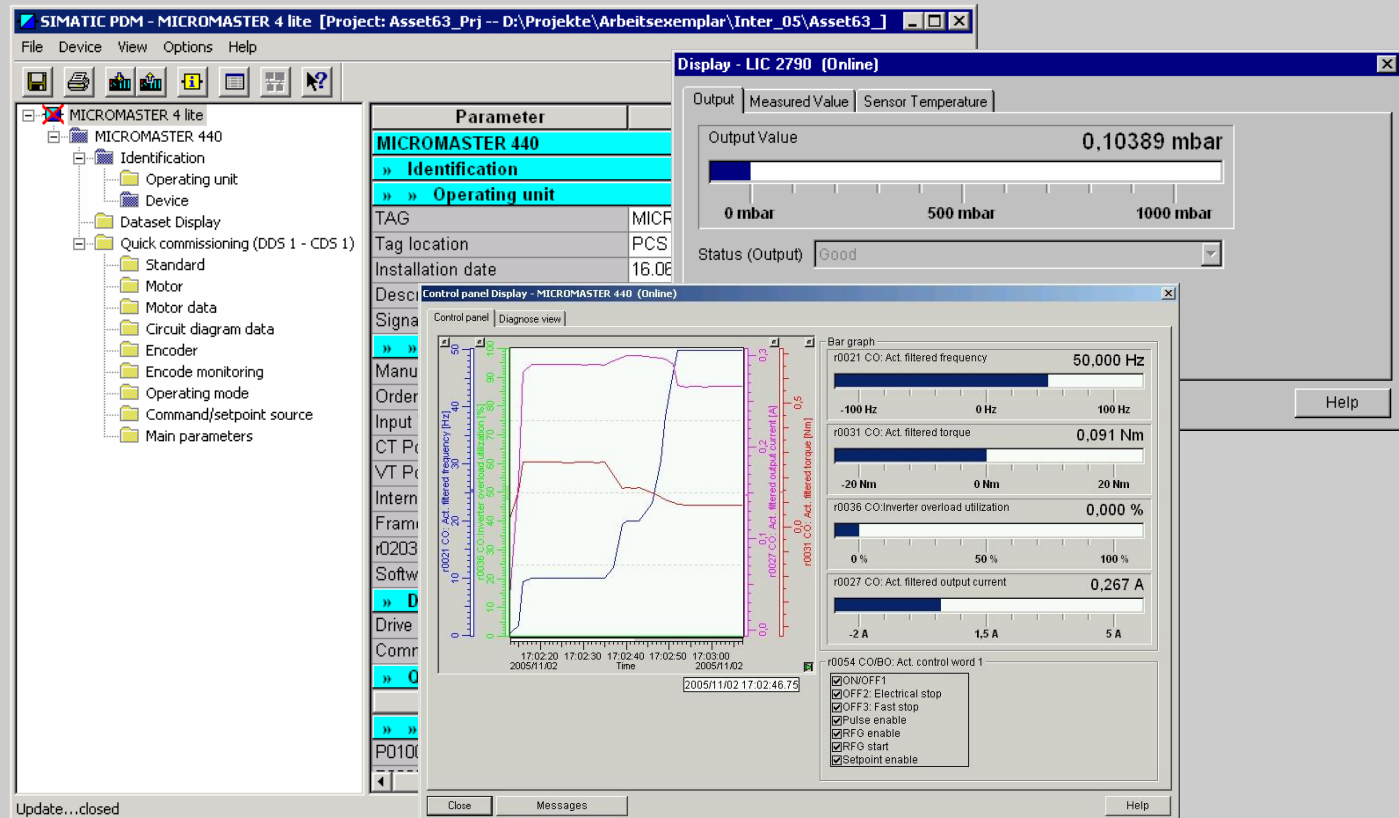


Object name	Description	Message	Device status	Communication	Time/Date
IM 151-2	...	...	Not validated	Not validated	...
#025 PROFIBUS P...	...	...	Not validated	Not validated	...
ACHEMA	SAMSON Typ ...	Simply the best!	Not validated	Good	28.04.2003 17:54:27
DEMO-TIC010	...	...	Good	Good	29.04.2003 13:53:52
LICIA 1610	SITRANS P DS III from Siemens	...	Good	Good	30.04.2003 13:11:33
MSR-Stelle	SAMSON Typ ...	Take it easy!	Not validated	Good	28.04.2003 19:08:54
PROFIBUS PA-Gerät	...	...	Not validated	Not validated	...
PROMAG 53	...	...	Not validated	Good	30.04.2003 14:12:12
TAG	...	...	Not validated	Not validated	...

# SIMATIC PDM

## Parameter View / Online - View

➔ Common view (same look and feel for all devices)



■ Contents are defined in the Device description (EDD).



Setting a New  
Standard  
of Integration

Requirements

EDD

Device Integration

User Interface

Communication

Functions

Diagnosis

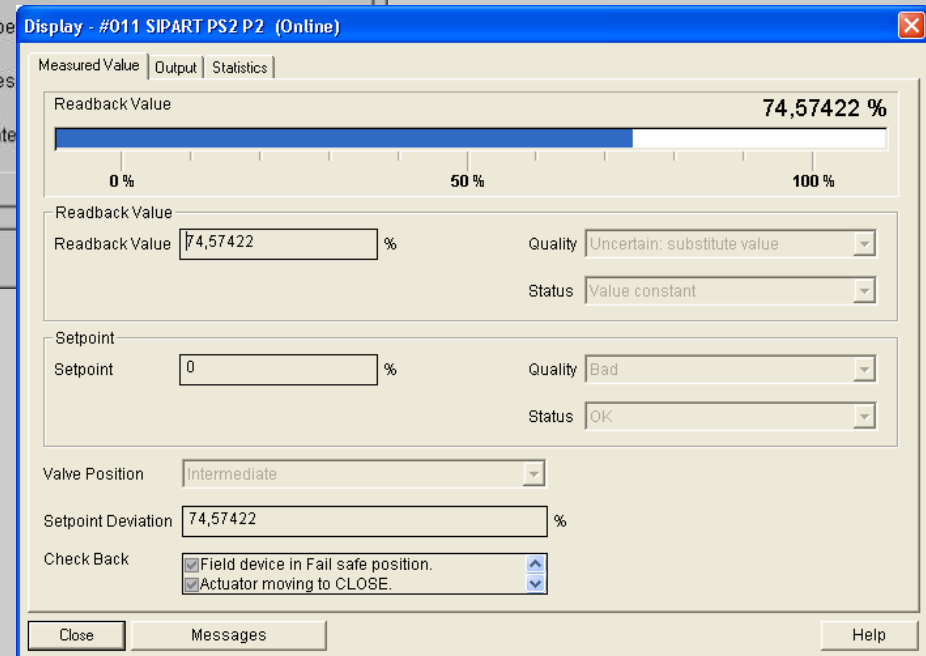
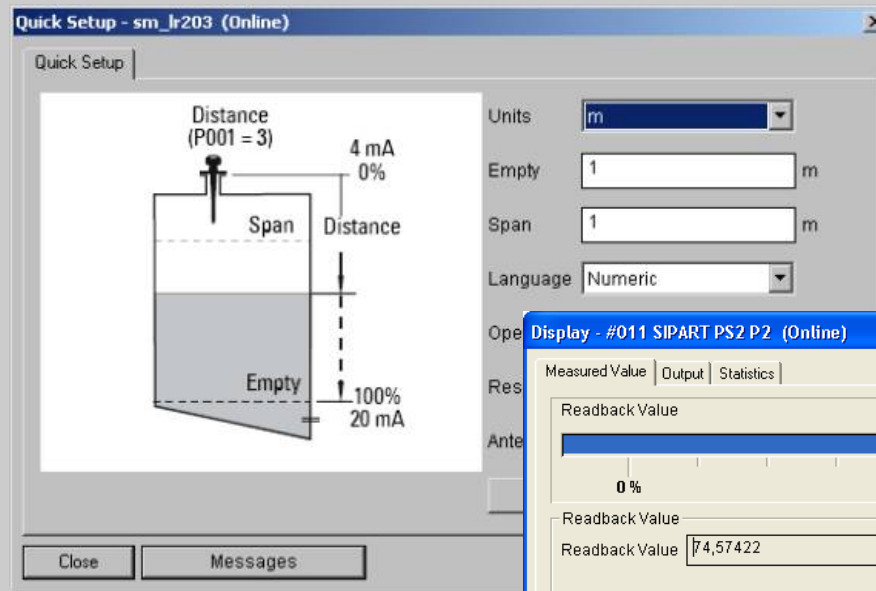
Product

Summary

SIEMENS

# Online – View new (Realization Enhancement step 1)

➔ New possibilities of graphic representation



Setting a New  
Standard  
of Integration

Requirements

EDD

Device Integration

User Interface

Communication

Functions

Diagnosis

Product

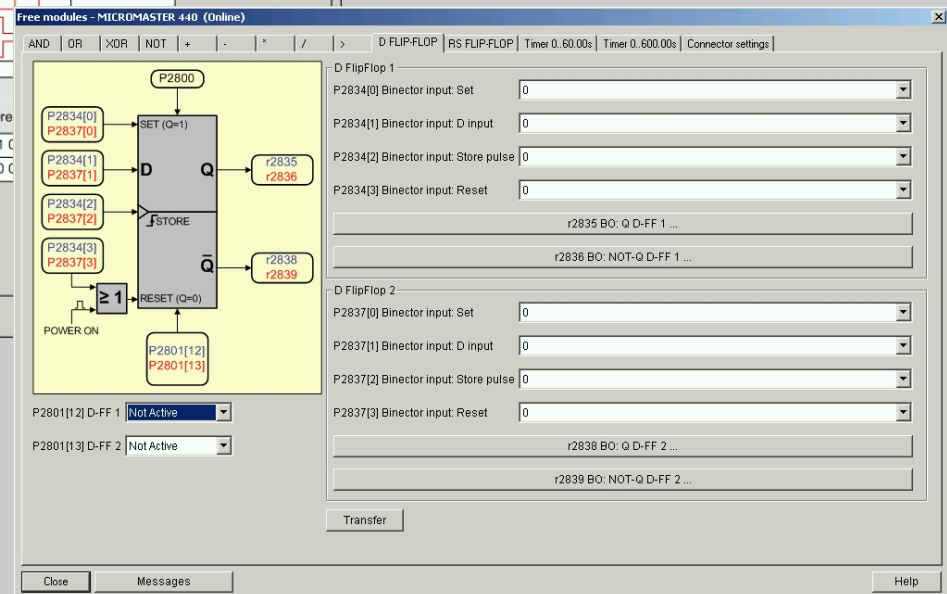
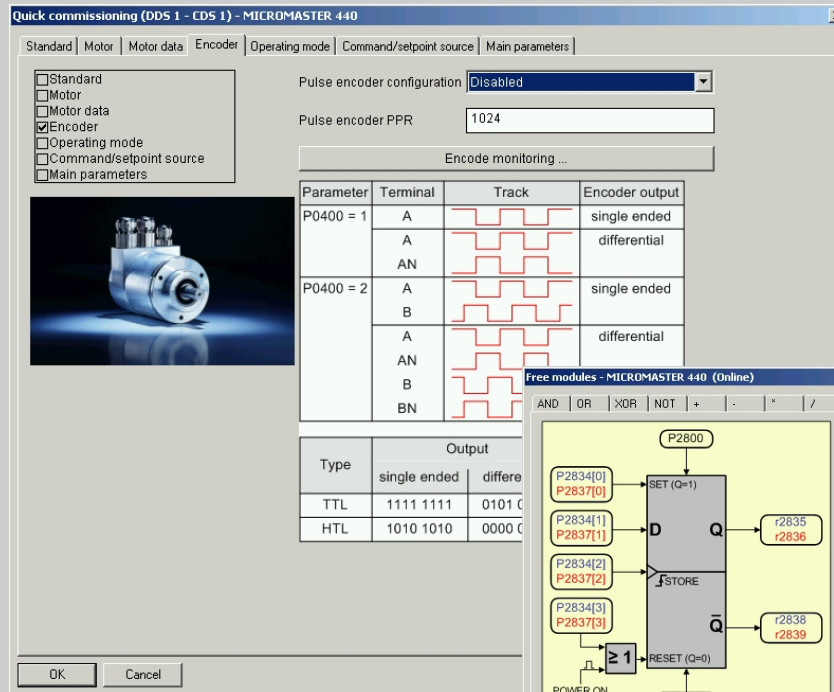
Summery

SIEMENS

# Online – View new (Realization Enhancement step 1)

➔ New possibilities of graphic representation

- Integration from pictures / video sequences
- free possibility of combinations



Setting a New  
Standard  
of Integration

Requirements

EDD

Device Integration

User Interface

Communication

Functions

Diagnosis

Product

Summary

SIEMENS

# SIMATIC PDM Properties

➔ Diagnostic view for all field device

Communication diagnosis

Standard diagnosis

Detail diagnosis based on EDD  
(Manufacturer information)

Properties: Pointek CLS 2000 (TAG)

General | Device | Upload to PC/programming Device | Download to Device | Change log | Import | Diagnostics

Communication ☒ Good ☐ Failed

Device Status

- ☐ Good
- ☐ Device in test model
- ☐ Local override
- ☐ Simulation or substitute value
- ☐ Out of service
- ☐ Device type mismatch
- ☐ Maintenance alarm
- ☐ Maintenance demanded
- ☒ Maintenance required
- ☐ Configuration failure
- ☐ Configuration warning
- ☐ Configuration changed
- ☐ Process value alarm
- ☐ Process value warning
- ☐ Process value tolerance

Last Check: 28.06.2005 13:30:38

Message Text

```
>> Maintenance required <<
- Sensor is polluted
Pollution=51
Alarm Limit=66
Warning Limit=32
Time Format:
x day(s) y hour(s)
Sensor pollution exceeded the user defined warning limit
-> Remove sensor pollution
Reset pollution detection
```

Update diagnostics

OK Cancel Help

Setting a New  
Standard  
of Integration

Requirements

EDD

Device Integration

User Interface

Communication

Functions

Diagnosis

Product

Summary

SIEMENS



# SIMATIC PDM Integrated Help

➔ Manufacturer specific documentation can integrate over EDD

The screenshot displays the SIMATIC PDM interface with the following components:

- Project Tree (Left):** Shows a hierarchy for 'Pointek CLS 2000' including Identification, Operation Unit, Device, Parametrization, Input, and Transducer Block: Discrete Input.
- Parameter Table (Center):**

Parameter	Value	Unit	Status
<b>Pointek CLS200</b>			
DD Revision	1.01.08-000		Initial va
» Identification			
» » Operation Unit			
TAG	Pointek CLS 2000		
Descriptor	Level switch		
Message	Simatic PDM		
» » Device			
Manufacturer	Siemens Milltronics		
	Pointek CLS200		
	0300.01.02		
- Help on SIMATIC PDM (Bottom Left):** A window with a search bar and a list of topics including Product Introduction, Starting SIMATIC PDM, Configuring Networks, and Integrating Devices.
- Help Window (Bottom Center):** Displays a 'SIMATIC PDM' logo and a list of links for product introduction, configuration, and working with SIMATIC PDM.
- Parameter Details (Bottom Right):** A dialog box showing 'Ident Number' with a text area containing: '7/EN50170/ device shall have an Ident\_Number. There are profile specific Ident\_Numbers. A device may have one and the manufacturer specific one. The user is both using this parameters.' Below this are input fields for '5714' (digits) and '53333' (digits).
- Adobe Reader (Right):** Displays the 'Instruction Manual - July 2004' for the 'pointek CLS 200' device, showing an image of the device and the 'SIEMENS' logo.

■ Help about Parameters will generate based on EDD

■ Recommendation for documents is format .pdf



Setting a New  
Standard  
of Integration

Requirements

EDD

Device Integration

User Interface

Communication

Functions

Diagnosis

Product

Summary

**SIEMENS**

# Simatic PDM

## Process device system view



Setting a New  
Standard  
of Integration

Requirements

EDD

Device Integration

User Interface

Communication

Functions

Diagnosis

Product

Summary

Press F1 to get Help.

Object name	Description	Message	Device status	Communication	Time/Date
IM 151-2	...	...	Not validated	Not validated	...
#025 PROFIBUS P...	...	...	Not validated	Not validated	...
ACHEMA	SAMSON Typ ...	Simply the best !	Not validated	Good	28.04.2003 17:54:27
DEMO-TIC010	...	...	Good	Good	29.04.2003 13:53:52
LICA 1610	SITRANS P DSIII	from Siemens	Good	Good	30.04.2003 13:11:33
MSR-Stelle	SAMSONi Typ ...	Take it easy!	Not validated	Good	28.04.2003 19:08:54
PROFIBUS PA-Gerät	...	...	Not validated	Not validated	...
PROMAG 53	.....	.....	Not validated	Good	30.04.2003 14:12:12
TAG	...	...	Not validated	Not validated	...

Diagnostic status at last communication

Overview of all configured SIMATIC PDM objects with:

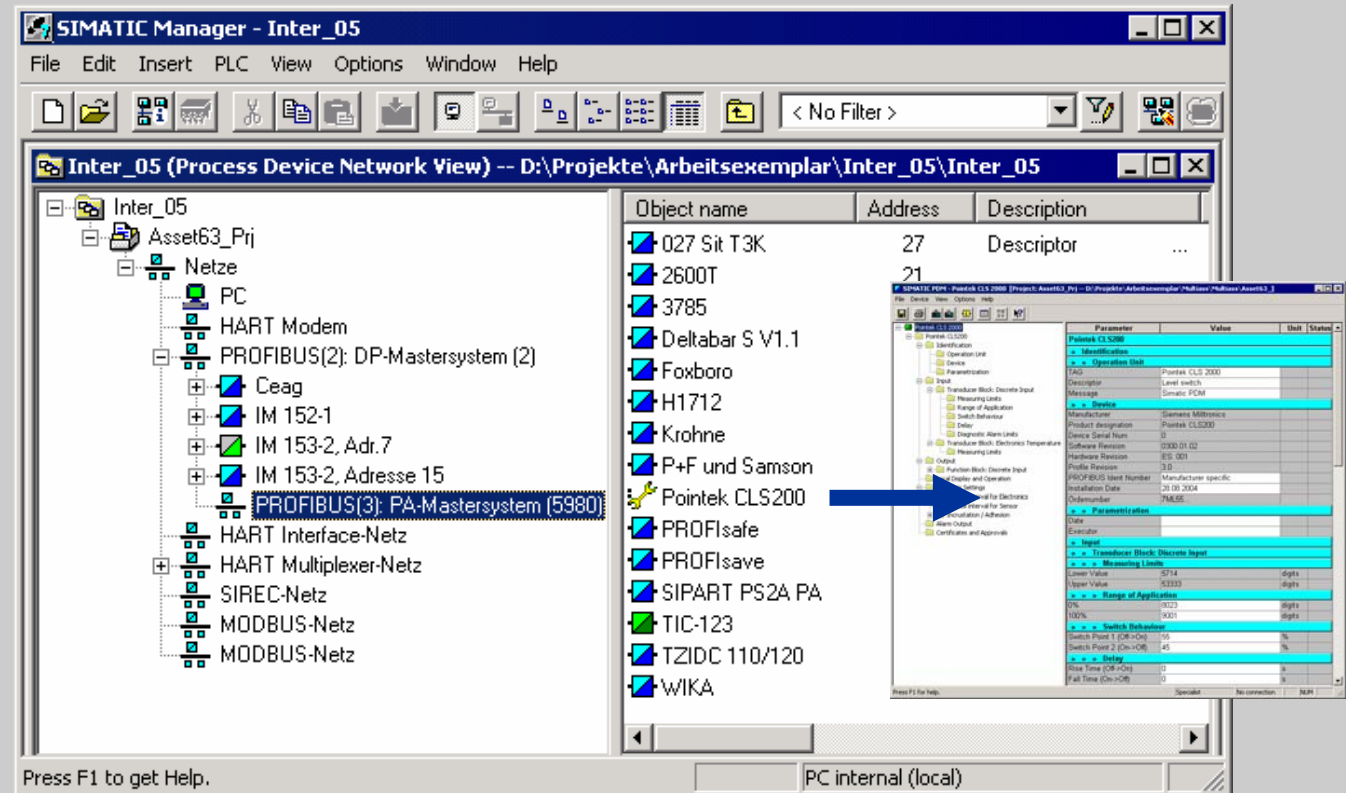
- Object name (TAG)
- Communication status
- Diagnostic status
- Communication method
- When was the last processing
- Free text 1
- Free text 2
- Free text 3



# SIMATIC PDM

## Process device network view

➔ Common view for stand alone application



- Represents real networks
- Structure can be imported from the lifelist



Setting a New  
Standard  
of Integration

Requirements

EDD

Device Integration

User Interface

Communication

Functions

Diagnosis

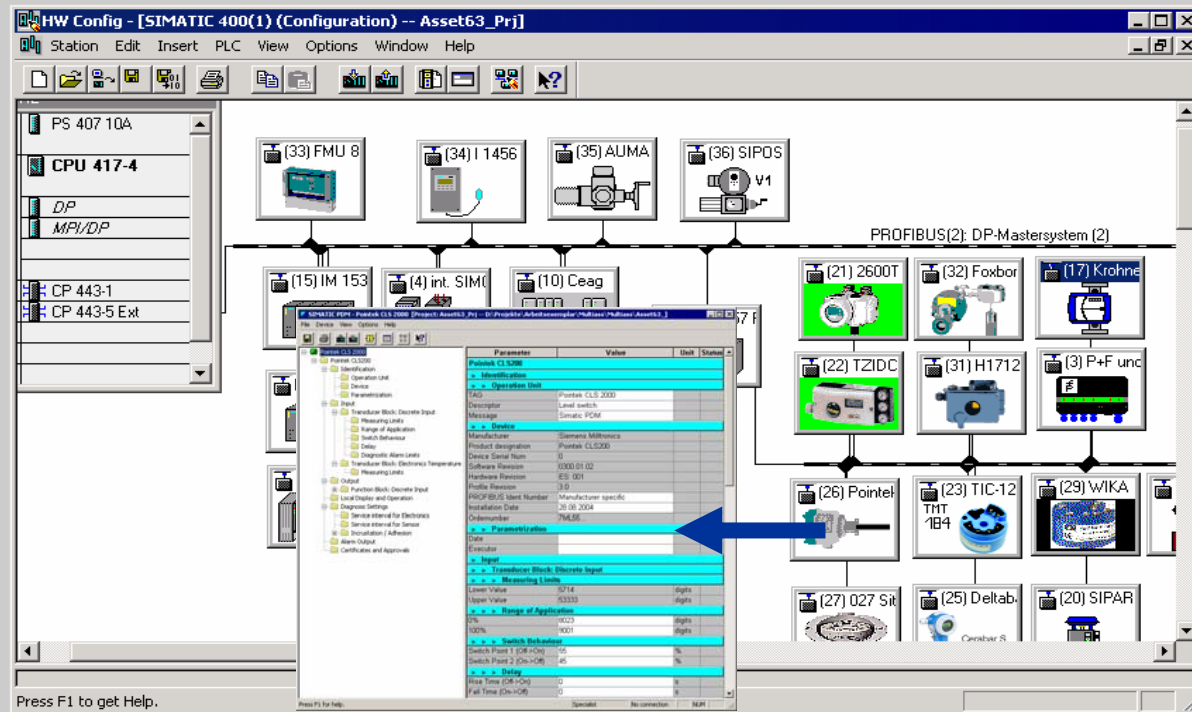
Product

Summary

**SIEMENS**

# Simatic PDM Hardware project (integrated)

➔ Common view for integrated application in Simatic



- Simatic PDM can be started directly from hardware project view Step 7 in Simatic S7 and Simatic PCS 7
- Project wide connections to the field devices



Setting a New  
Standard  
of Integration

Requirements

EDD

Device Integration

User Interface

Communication

Functions

Diagnosis

Product

Summary

**SIEMENS**

# SIMATIC PDM

## Parameter view (Device view)

Setting a New  
Standard  
of Integration

Requirements

EDD

Device Integration

User Interface

Communication

Functions

Diagnosis

Product

Summary

**SIEMENS**

**Online - Dialog**

**Diagnosis update**

**Read / write parameters**

**only read**

**read and write**

**Grouping of device parameters**

Parameter	Value	Unit	Status
Pointek CLS 2000			
Level switch			
Simatic PDM			
Manufacturer	Siemens Milltronics		
Product designation	Pointek CLS200		
Serial Num	0		
Software Revision	0300.01.02		
Hardware Revision	ES: 001		
Profile Revision	3.0		
PROFIBUS Ident Number	Manufacturer specific		
Installation Date	28.08.2004		
Ordernumber	7ML55...		
<b>» » Parametrization</b>			
Date			
Executor			
<b>» » Input</b>			
<b>» » Transducer Block: Discrete Input</b>			
<b>» » » Measuring Limits</b>			
Lower Value	5714	digits	
Upper Value	53333	digits	
<b>» » » Range of Application</b>			
0%	8023	digits	
100%	9001	digits	
<b>» » » Switch Behaviour</b>			
Switch Point 1 (Off->On)	55	%	
Switch Point 2 (On->Off)	45	%	
<b>» » » Delay</b>			
Rise Time (Off->On)	0	s	
Fall Time (On->Off)	0	s	

Press F1 for help.

Specialist No connection NUM





# SIMATIC PDM

## Parameter view (Multi view)

Setting a New  
Standard  
of Integration

Requirements

EDD

Device Integration

User Interface

Communication

Functions

Diagnosis

Product

Summary

**SIEMENS**

**SIMATIC PDM - Pointek CLS200 [Project: Asset63\_Prj -- D:\Projekte\Arbeitsexemplar\Inter\_05\Asset63\_]**

File Device View Options Help

**PROFIBUS DP Net work**

**Pointek CLS200**

**Remote I/O ET 200M**

**Analog modul (HART)**

**HART – Field device**

**DP/PA – Link device**

**PROFIBUS PA Field device**

**Measuring Limits**

**Grouping of device parameters**

**Switch Behaviour**

**Delay**

**PROFIBUS DP Field devices**

Press F1 for help. Specialist No connection NUM





# SIMATIC PDM

## Connecting points

Setting a New  
Standard  
of Integration

Requirements

EDD

Device Integration

User Interface

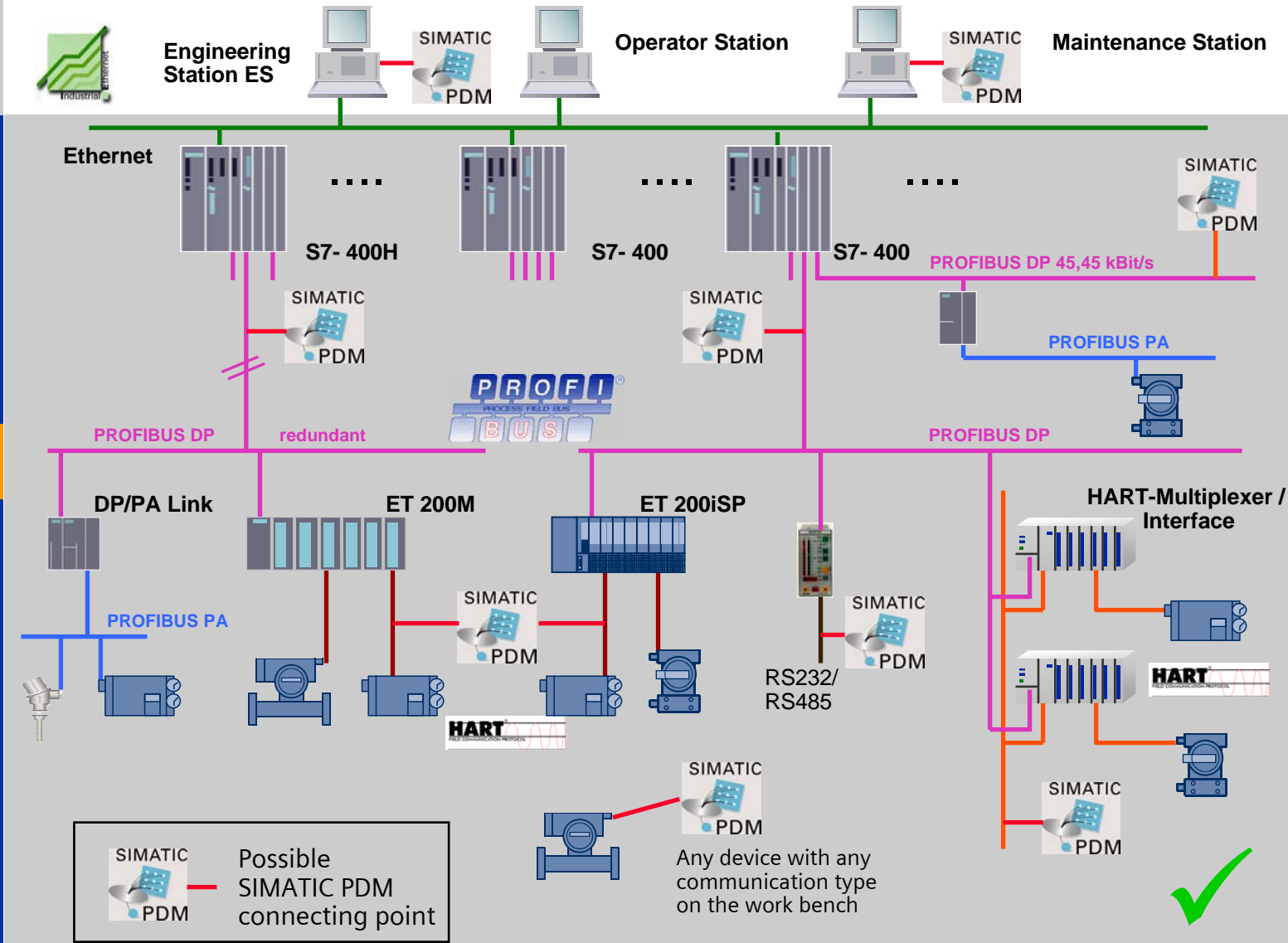
Communication

Functions

Diagnosis

Product

Summary

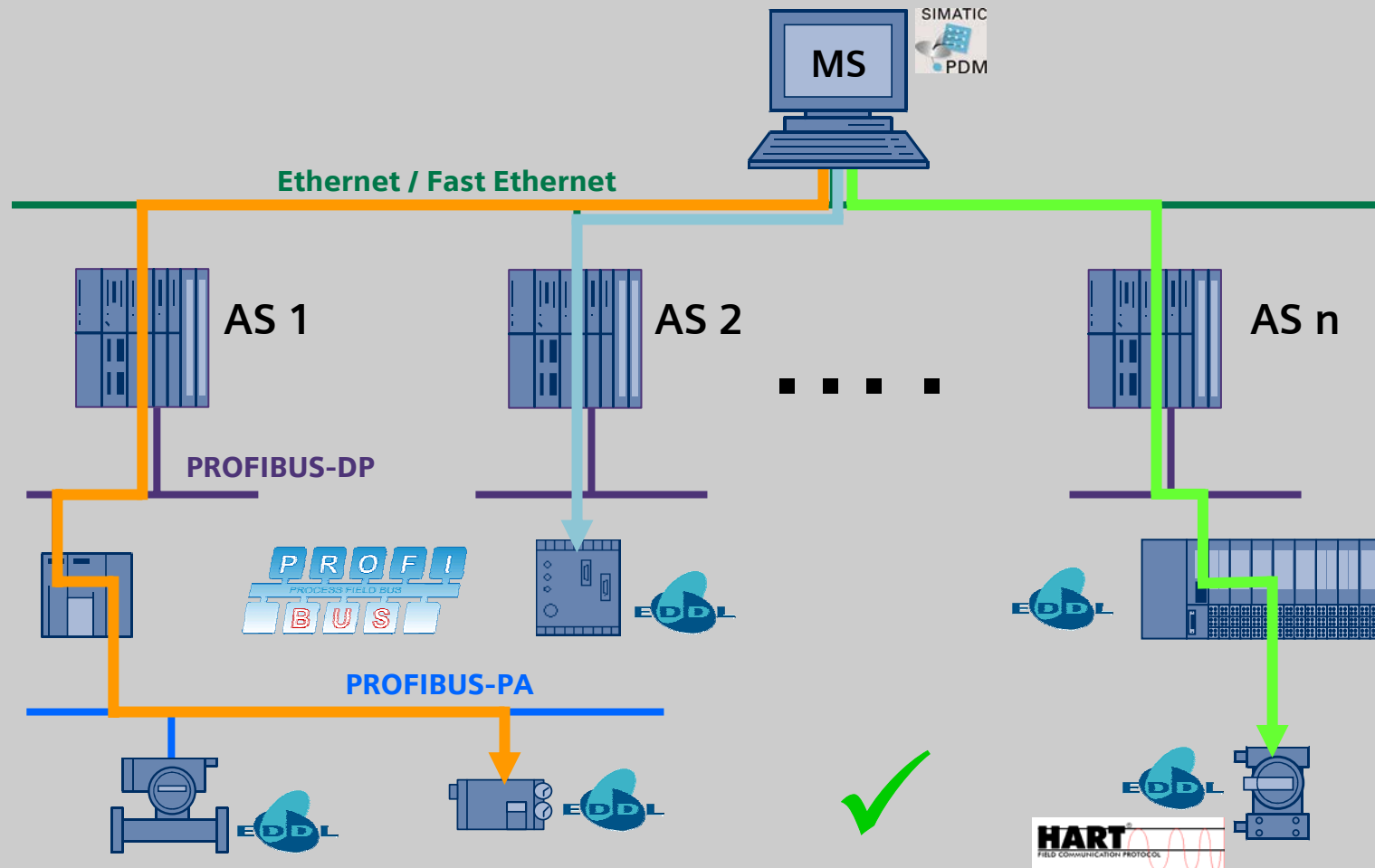


**SIEMENS**

# Simatic PDM

## Communication via Ethernet

→ Central parameterizing /configuration of field devices



Setting a New  
Standard  
of Integration

Requirements

EDD

Device Integration

User Interface

Communication

Functions

Diagnosis

Product

Summary

**SIEMENS**



# Simatic PDM

## Communication check

Setting a New  
Standard  
of Integration

Requirements

EDD

Device Integration

User Interface

**Communication**

Functions

Diagnosis

Product

Summery

### ➔ Sure Communication

- Checks when establishing a connection include
  - Whether the device type matches
  - Whether it is the same device
  - Whether modifications have been made on the device, which have not been saved in the project
- If the connection breaks down, there is an automatic attempt to establish a new connection
- Faults are displayed and logged

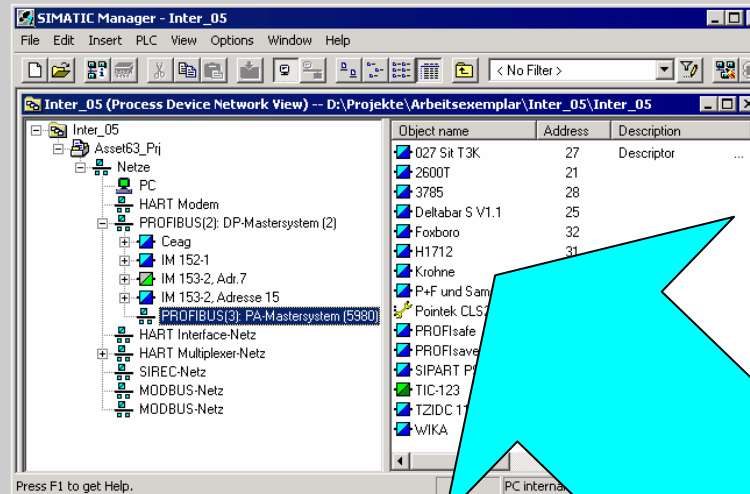


# Simatic PDM

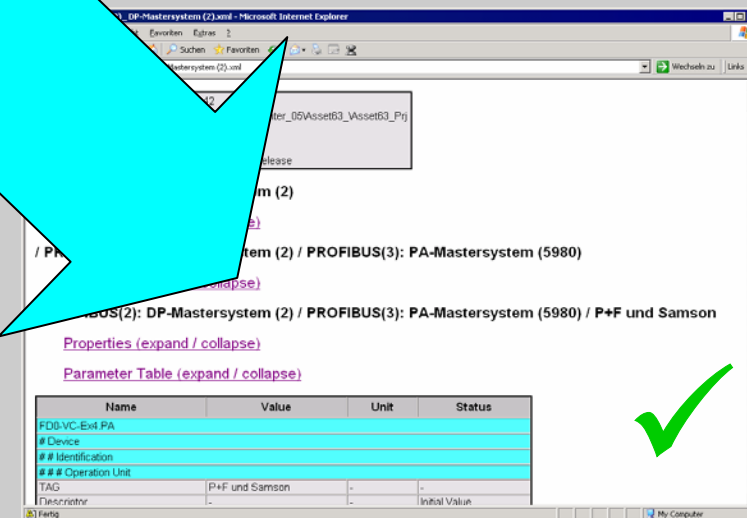
## Im- and Export

➔ XML is the universal interface for im- and export

- Access to Office environment
- Tool for conversion to csv file (Excel) is included on the PDM CD
- Export with HTML – display information (View e. g. with MS Internet Explorer)



- It is possible to export:
  - Lifelist
  - Projects
  - Net works
  - Stations
  - Field devices (Parameters)
  - Audit trail protocol
  - Calibration Protocols (Check protocol)



Setting a New  
Standard  
of Integration

Requirements

EDD

Device Integration

User Interface

Communication

Functions

Diagnosis

Product

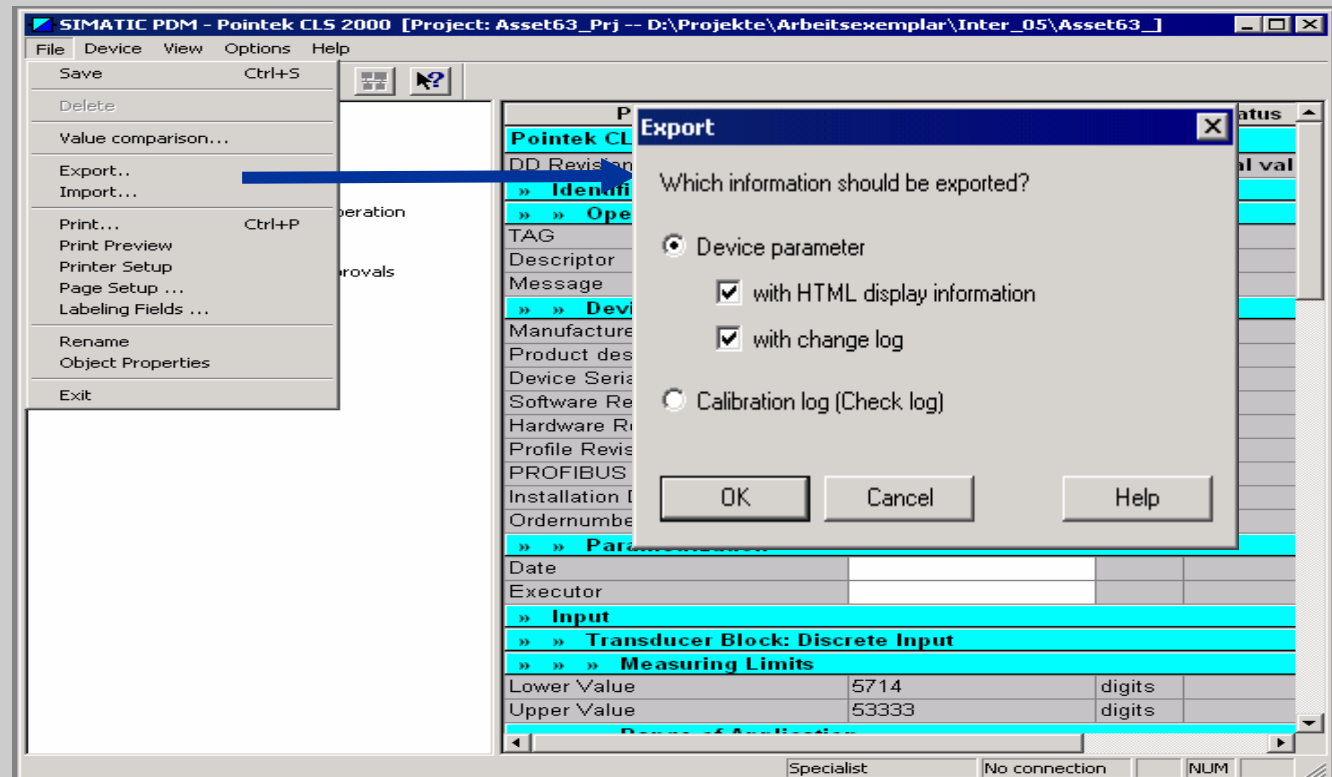
Summary

**SIEMENS**

# SIMATIC PDM

## Export of Data

➔ It is the many small points which form the product



- Display as HTML in the Internet Explorer
- Display with XML - Parser
- Conversation in CSV – Format possible



Setting a New  
Standard  
of Integration

Requirements

EDD

Device Integration

User Interface

Communication

Functions

Diagnosis

Product

Summery

**SIEMENS**

# SIMATIC PDM

## Asset Management integrated

➔ Provision and preparation of information for the Simatic PCS 7 Maintenance station

The screenshot displays the SIMATIC PDM V6.0 SP1 interface. The main window shows a network diagram titled "Cost reduction with PROFIBUS" with various SIMATIC components connected. A blue arrow points from the "Data via Simatic PDM" label to the "MICROMASTER 440" device in the diagram. Another blue arrow points from the "Simatic PDM" label to the "MICROMASTER 440" entry in the "Parameter" table.

**Cost reduction with PROFIBUS**

**Data via Simatic PDM**

**Simatic PDM**

**Parameter**

Parameter	Value
<b>MICROMASTER 440</b>	
» Identification	
» Operating unit	
TAG	MICROMASTER 440
Tag location	Simatic PCS 7 MS
Installation date	28.08.05
Description	Simatic PCS 7 MS
Signature	
» Device	
Manufacturer	SIEMENS AG
Order number (MLFB)	6SE6440-2UC11-2AAx
Input Voltage & Frequency	1/3AC200-240V +10%-10% 47-63Hz
CT Power	0,12 kW
VT Power	0,12 kW
Internal Filter	no
Encoder	A
Device	MICROMASTER 440



Setting a New  
Standard  
of Integration

Requirements

EDD

Device Integration

User Interface

Communication

Functions

Diagnosis

Product

Summary

**SIEMENS**





# Simatic PDM

## Diagnosis / Diagnosis classification

Setting a New  
Standard  
of Integration

Requirements

EDD

Device Integration

User Interface

Communication

Functions

**Diagnosis**

Product

Summary

→ Any diagnosis found out is classified

- **Communication status**
  - good / fault
  - Device – assignment fault
- **Process status**
  - Device status (unchecked, deactivated)
  - Process limits (Tolerant, Warning, Alarm)
- **Maintenance status**
  - Maintenance request
  - Maintenance demand
  - Maintenance alarm
- **Configuration status**
  - Fault / Warning
  - Change
- **Operate mode**
  - locale function check / manual
  - Simulation
  - Out of order














**SIEMENS**



# Simatic PDM

## Diagnostic symbols (Principle)

→ expressive and graphical representation

	Unchecked
	Communication interrupted
	Configuration error
	Maintenance alarm
	Maintenance demand
	Maintenance required
	Simulation
	Good
	Communication good
	Device has no diagnostics
	Device passive
	Unchecked

- The device diagnostics are the basis
  - Described in EDD
  - Described in value status (quality code)

- Symbol is used at all relevant points
  - Process device system view
  - Lifelist
  - Parameter view
  - Multiview

- Only displayed for available information from the field device

- The device manufacturer is responsible for the information content



Setting a New  
Standard  
of Integration

Requirements

EDD

Device Integration

User Interface

Communication

Functions

Diagnosis

Product

Summary

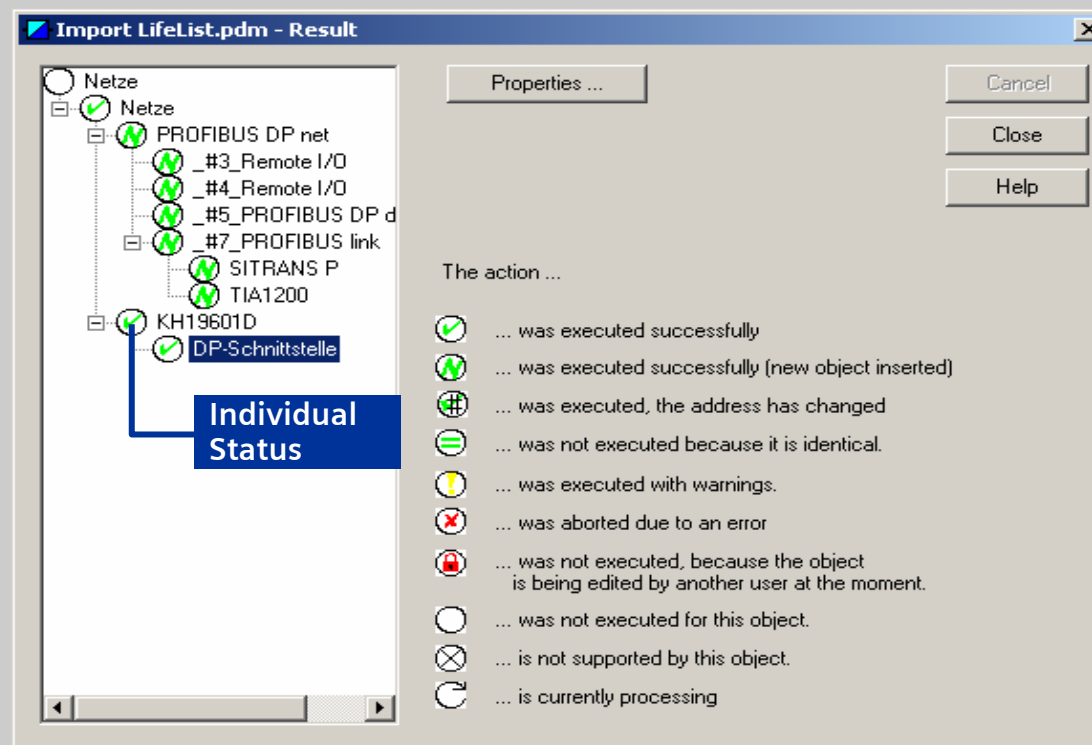
**SIEMENS**

# Simatic PDM

## Status from PDM - Functions

➔ System functions are supervised

- Status of load functions
- Status of set operations
- Status of export and import functions



Setting a New  
Standard  
of Integration

Requirements

EDD

Device Integration

User Interface

Communication

Functions

**Diagnosis**

Product

Summary

**SIEMENS**

# Simatic PDM

## Value comparison

### ➔ Identification of local changes

**SIMATIC PDM - Siemens T3K [Project: Asset63\_Prj -- D:\Projekte\Arbeitsexemplar\Inter\_05\Asset63\_]**

File Device View Options Help

**Siemens T3K**

- SITRANS T3K PA
  - Identification
    - Operation Unit
    - Device
  - Input
    - Temperature
  - Output
    - Temperature
  - Certificates and Approvals

Parameter	Value	Unit	Status	Value
<b>SITRANS T3K PA</b>				
DD-Version	01.768.06-003		Initial va	01.768.06-003
<b>» Identification</b>				
<b>» » Operation Unit</b>				
TAG	Siemens T3K			027 Sit T3K
Descriptor	Reactor 2			Descriptor
Message	OK			Message
<b>» » Device</b>				
Manufacturer	Siemens			
Product designation	SITRANS T3K PA			SITRANS T3K PA
Device Serial Num	N1-S4-6556			N1-S4-6556
Software Revision	1.32			1.32
Hardware Revision				
Profile Revision				
Static Revision No.				
PROFIBUS Ident Number	Profile specific			Manufacturer specific
Installation Date	01.01.2005			01.01.2000

Update...closed

Specialist Connected NUM

**Annotations:**

- Difference to Project dates:** Points to the Installation Date row.
- Dates in the Project:** Points to the Installation Date row.
- Dates in the field device:** Points to the Installation Date row.

- Comparison of offline data with the online data in the device



Setting a New  
Standard  
of Integration

Requirements

EDD

Device Integration

User Interface

Communication

Functions

Diagnosis

Product

Summary

**SIEMENS**

# Simatic PDM Lifelist

➔ Ideal for commissioning, service and maintenance

**Detail diagnosis**

**Detail diagnosis**

**Profil revision**

**Diagnosis status**

Address / TAG	Device status	Device type	Device-No.	Manufacturer	Software r...	GSD file	Information
PROFIBUS DP	<Address: 0 ... 126>	---	---	---	---	---	30.11.2005 13:4
0: RACHUT rachutho	---	---	---	---	---	---	---
2: Active master	---	---	---	---	---	---	---
4: int. SIMOCODE	>> Maintenance alarm <<...	---	---	---	---	---	---
5:	Slave has been assigned parameters b...	---	---	---	---	---	---
23: Temperatur B...	>> Local override <<- FB1 ...	---	---	---	---	---	---
26: Pointek CLS200	---	---	---	---	---	---	---
27: #027 Sit T3K	Good	---	---	---	---	---	---
7: _#7_	Slave has been assigned parameters b...	---	---	---	---	---	---

Parameter Wert Einheit

Pointek CLS200

Identifikation

Parameter

Wert

Einheit

100 %

- For PROFIBUS (DP/PA) – Networks, including sub-networks
- Integrate in Simatic S7 / PCS 7 for PROFIBUS PA
- For HART - modem
- Field devices can be parameterized from the lifelist



Setting a New  
Standard  
of Integration

Requirements

EDD

Device Integration

User Interface

Communication

Functions

Diagnosis

Product

Summary

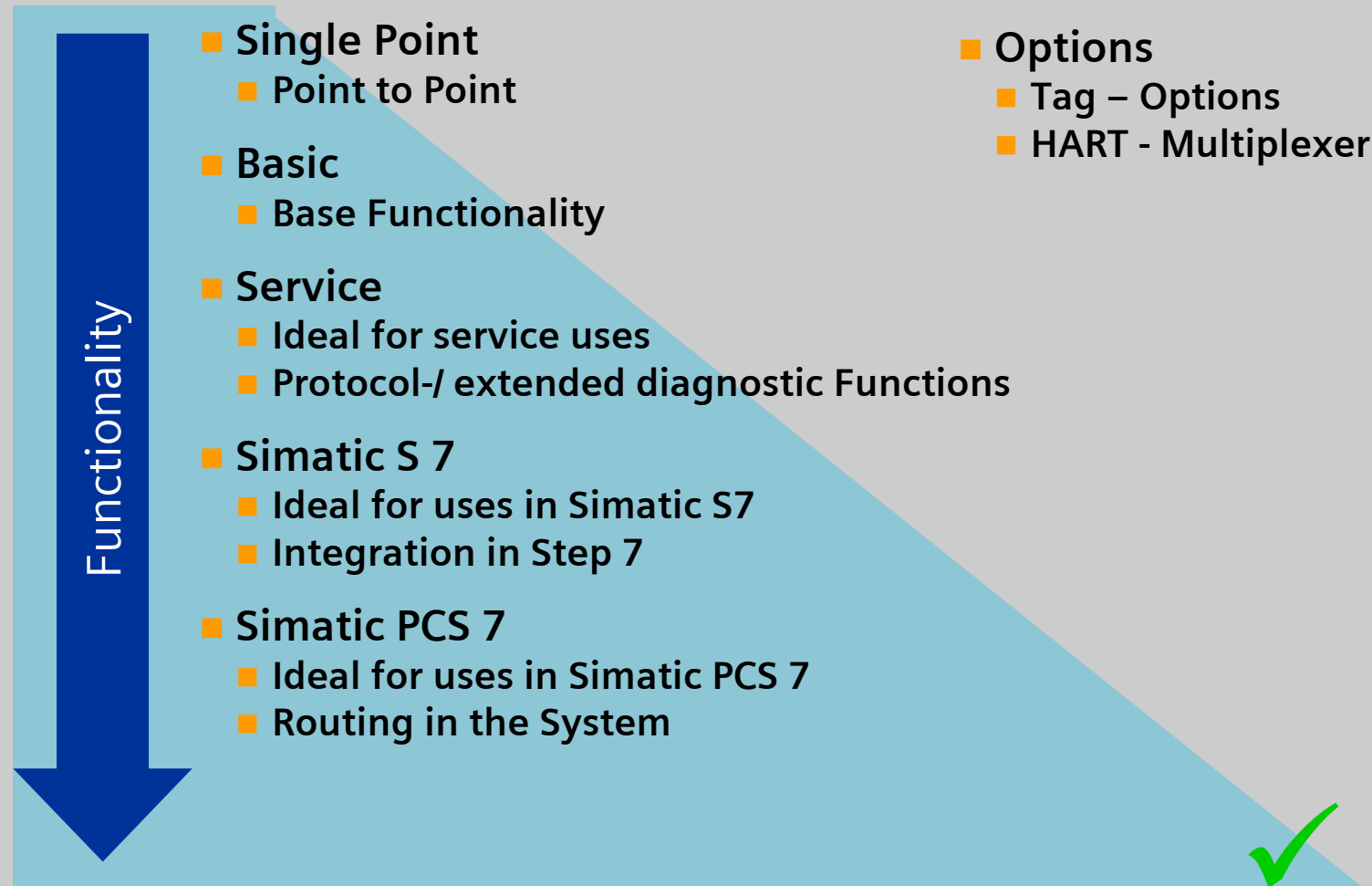
**SIEMENS**



# Simatic PDM

## Product structure

➔ The product structure orientates itself to customer requirements



Setting a New  
Standard  
of Integration

Requirements

EDD

Device Integration

User Interface

Communication

Functions

Diagnosis

**Product**

Summary

**SIEMENS**





# SIMATIC PDM - The Process Device Manager

Setting a New  
Standard  
of Integration

Requirements

EDD

Device Integration

User Interface

Communication

Functions

Diagnosis

Product

Summary

**SIMATIC PDM**  
is the  
**most powerful**  
manager for process devices  
**in the global market**  
in terms of device integration



**SIEMENS**



# Contacts

Setting a New  
Standard  
of Integration

Requirements

EDD

Device Integration

User Interface

Communication

Functions

Diagnosis

Product

Summary

- **SIEMENS AG Customer Support**
  - City D-90475 Nürnberg
  - Tel.: +49 (0) 180 50 50 222
  - Fax: +49 (0) 180 50 50 223
  - E-mail: [techsupport@ad.siemens.de](mailto:techsupport@ad.siemens.de)

- **Internet**

- General information

- <http://pcs.khe.siemens.de/pdm>

- Customer Support

- <http://www.siemens.com/automation/service&support>

- <http://www.ad.siemens.com/csinfo>

- Subsequent installation of field devices

- [individual from field device manufacturers](#)

- or

- <http://pcs.khe.siemens.de/pdm>



**SIEMENS**