



LV HRC fuse element, NH2, In: 300 A, gG, Un AC: 690 V, Un DC: 440 V, Combined indicator, Insulated grip lugs

Figure similar

| Model | |
|--|-------------------------------------|
| product brand name | SETRON |
| product designation | LV HRC fuse link |
| design of the product | With blade contacts |
| design of an identification indicator | Combination alarms |
| design of the switching contact | Non-corroding, silver-plated |
| design of the fuse link | LV HRC fuse link |
| General technical data | |
| size of fuse system according to EN 60269-1 | NH2 |
| operating class of the fuse link | gG |
| mounting type | insulated grip lugs |
| type of voltage of the operating voltage | AC/DC |
| operational current at AC rated value | 300 A |
| supply voltage | |
| • at AC | 690 V |
| • at DC | 440 V |
| Protection class | |
| protection class IP | IP20, with connected conductors |
| Breaking Capacity | |
| breaking capacity at AC according to IEC 60269 rated value | 120 kA |
| breaking capacity at DC with time constant ≤ 10 ms according to IEC 60269 rated value | 25 kA |
| Dissipation | |
| power loss [W] | 25.6 W |
| power loss [W] for rated value of the current at AC in hot operating state per pole | 26 W |
| Mechanical Design | |
| width of the enclosure | 57.8 mm |
| mounting position | Any, preferably vertical |
| Net Weight | 655 g |
| Environmental conditions | |
| ambient temperature during operation | |
| • minimum | -5 °C |
| • maximum | 40 °C |
| environmental category | -20 to +50 at 95% relative humidity |
| environmental category during storage | 90% at 20°C |
| Certificates | |
| reference code according to IEC 81346-2 | FC |

Approvals Certificates

Environment

General Product Approval

Maritime application

[Environmental Con-
firmations](#)

[Environmental Con-
firmations](#)



other

[Miscellaneous](#)

Further information

Information on the packaging

<https://support.industry.siemens.com/cs/ww/en/view/109813875>

Information for data generation and storage

<https://support.industry.siemens.com/cs/ww/en/view/109995012>

Information- and Downloadcenter (Catalogs, Brochures,...)

<https://www.siemens.com/lowvoltage/catalogs>

Industry Mall (Online ordering system)

<https://mall.industry.siemens.com/mall/en/en/Catalog/product?mlfb=3NA6250-6>

Service&Support (Manuals, Certificates, Characteristics, FAQs,...)

<https://support.industry.siemens.com/cs/ww/en/ps/3NA6250-6>

Image database (product images, 2D dimension drawings, 3D models, device circuit diagrams, ...)

https://www.automation.siemens.com/bilddb/cax_en.aspx?mlfb=3NA6250-6

CAX-Online-Generator

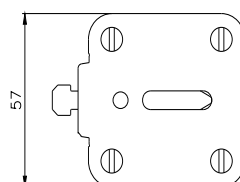
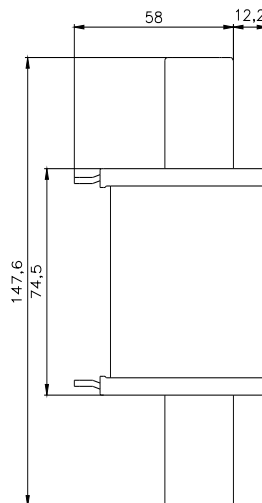
<https://www.siemens.com/cax>

Tender specifications

<https://www.siemens.com/specifications>

Characteristic curves

[https://curves.simaris.siemens.com/curves/<mmp_prod_noCOMP="HAUPT"></mmp_prod_no>](https://curves.simaris.siemens.com/curves/<mmp_prod_noCOMP=)



-F



FU



