








Position switch Metal enclosure 40 mm according to EN 50041 1 NO/1 NC quick action contacts with 2 LEDs, yellow/green, 24 V DC Rotary actuator right and/or left adjustable, metal lever 27 mm long and Stainless steel roller 19 mm Pin assignment: Pin1=21, Pin2=22 Pin3=13 and LED green, Pin4=14 and LED yellow, Pin5=ground LED

product brand name	SIRIUS
product designation	Mechanical position switches
product type designation	3SE5
manufacturer's article number	
<ul style="list-style-type: none"> of the supplied basic switch of the supplied actuator head for position switches of the supplied operating lever of the supplied switching contacts 	3SE5114-1CA00-0AF3 3SE5000-0AH00 3SE5000-0AA02 3SE5000-0CA00
suitability for use safety switch	Yes
General technical data	
product function positive opening	Yes
insulation voltage rated value	125 V
degree of pollution	class 3
surge voltage resistance rated value	0.8 kV
protection class IP	IP66/IP67
shock resistance	
<ul style="list-style-type: none"> according to IEC 60068-2-27 	30 g / 11 ms
vibration resistance according to IEC 60068-2-6	0.35 mm/5 g
mechanical service life (operating cycles) typical	15 000 000
thermal current	4 A
material of the enclosure of the switch head	plastic
reference code according to IEC 81346-2	B
continuous current of the C characteristic MCB	1 A; for a short-circuit current smaller than 400 A
continuous current of the quick DIAZED fuse link	4 A; for a short-circuit current smaller than 400 A
continuous current of the DIAZED fuse link gG	4 A
active principle	mechanical
repeat accuracy	0.05 mm
operating resource protection class	III (according to EN 60536)
Substance Prohibitance (Date)	07/01/2006
SVHC substance name	Lead CAS-No. 7439-92-1 Imidazolidine-2-thione (2-imidazoline-2-thiol) CAS-No. 96-45-7
Net Weight	0.381 kg
minimum actuating torque in directions of actuation	0.25 N·m
length of the sensor	141.5 mm
width of the sensor	40 mm
Ambient conditions	
ambient temperature	
<ul style="list-style-type: none"> during operation during storage 	-25 ... +60 °C -40 ... +90 °C

explosion protection category for dust	none				
Main circuit					
design of the switching contact	mechanical				
number of NC contacts for auxiliary contacts	1				
number of NO contacts for auxiliary contacts	1				
operational current at DC-13	3 A				
• at 24 V rated value					
Enclosure					
design of the housing	block, narrow				
material of the enclosure	metal				
coating of the enclosure	cathodic dip coating				
design of the housing according to standard	Yes				
Drive Head					
design of the actuating element	Twist lever, metal lever, 27 mm long, step 9 mm, high-grade steel roller 19 mm				
standard-compliant actuator head	EN 50041, design A				
shape of the switch head	roller				
design of the switching function	positive opening				
circuit principle	snap-action contacts				
number of switching contacts safety-related	1				
cable entry type	M12 plug				
design of plug-in connection	M12 plug, 5-pole: Pin 1 = terminal 21, Pin 2 = 22, Pin 3 = 13/LED green, Pin 4 = 14/LED yellow, Pin 5 = ground LED				
Installation/ mounting/ dimensions					
mounting position	any				
fastening method	screw fixing				
Connections/ Terminals					
type of electrical connection	M12 plug, fixed				
Supply voltage					
type of voltage of the supply voltage of the optional LED display	DC				
supply voltage of LED	24 V				
•					
design of the interface for safety-related communication	without				
Communication/ Protocol					
design of the interface	without				
Safety related data					
product function suitable for safety function	Yes				
service life maximum	20 a				
test wear-related service life necessary	Yes				
proportion of dangerous failures	20 %				
• with low demand rate according to SN 31920					
• with high demand rate according to SN 31920					
B10 value with high demand rate according to SN 31920	1 000 000				
failure rate [FIT] with low demand rate according to SN 31920	100 FIT				
ISO 13849					
device type according to ISO 13849-1	3				
IEC 61508					
safety device type according to IEC 61508-2	A				
Approvals Certificates					
General Product Approval	Test Certificates				
					Type Test Certificates/Test Report
CCC	UK CA	CE EG-Konf.	c UL US	EAC	
Test Certificates	other	Environment			



Further information

Information on the packaging

<https://support.industry.siemens.com/cs/ww/en/view/109813875>

Information for data generation and storage

<https://support.industry.siemens.com/cs/ww/en/view/109995012>

Information- and Downloadcenter (Catalogs, Brochures,...)

<https://www.siemens.com/ic10>

Industry Mall (Online ordering system)

<https://mall.industry.siemens.com/mall/en/en/Catalog/product?mlfb=3SE5114-1CH02-1AF3>

Cax online generator

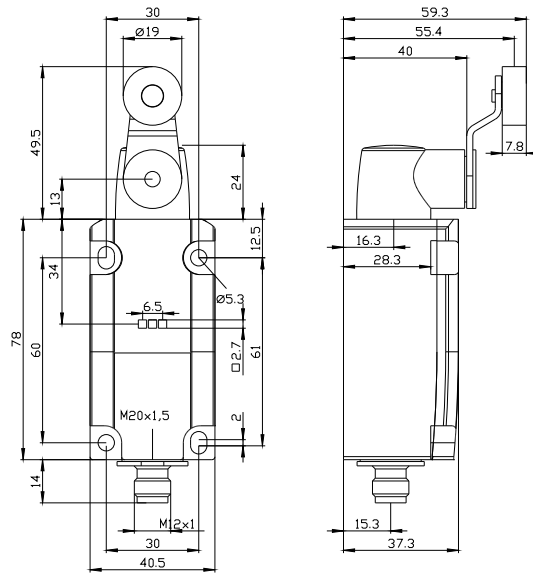
<https://support.automation.siemens.com/WW/CAXorder/default.aspx?lang=en&mlfb=3SE5114-1CH02-1AF3>

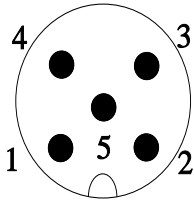
Service&Support (Manuals, Certificates, Characteristics, FAQs,...)

<https://support.industry.siemens.com/cs/ww/en/ps/3SE5114-1CH02-1AF3>

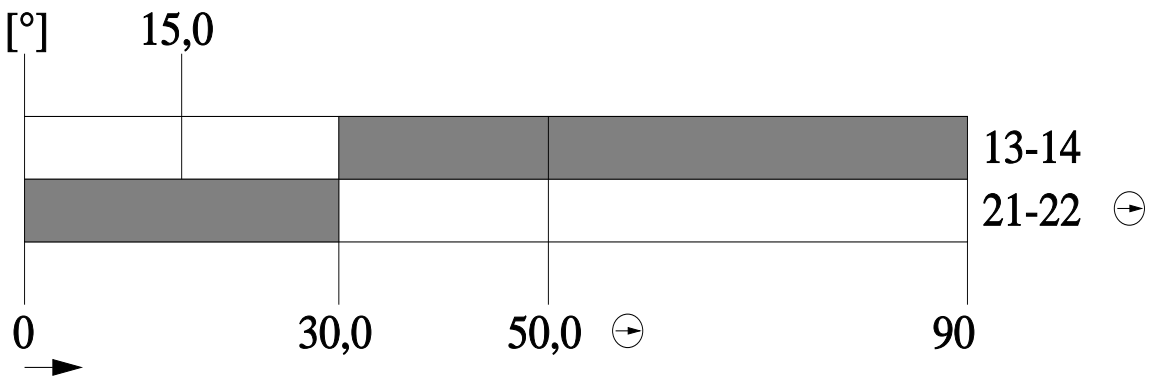
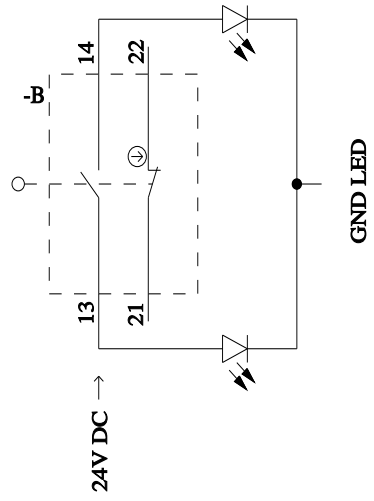
Image database (product images, 2D dimension drawings, 3D models, device circuit diagrams, EPLAN macros, ...)

https://www.automation.siemens.com/bilddb/cax_de.aspx?mlfb=3SE5114-1CH02-1AF3&lang=en





1	BN = Brown	→	21
2	WH = White	→	22
3	BU = Blue	→	13+LED-Green
4	BK = Black	→	14+LED-Yellow
5	GY = Grey	→	GND LED



last modified:

4/4/2026