

REL-IR4/LDP- 48DC/4X21 - Single relay



2903678

<https://www.phoenixcontact.com/ro/produse/2903678>

Vă rugăm să țineți cont de faptul că datele afișate în acest document PDF au fost generate din catalogul nostru online. Datele complete sunt disponibile în documentația pentru utilizator. În cazul descărcărilor, se aplică Termenii și condițiile generale de utilizare ale companiei noastre.



Plug-in industrial relay with power contacts, 4 changeover contacts, test button, status LED, freewheeling diode, mechanical switching position indicator, polarity: A1+, A2-, coil voltage: 48 V DC

Date comerciale

Număr articol	2903678
Unitate de ambalare	10 Bucată
Cantitate minimă pentru comandă	10 Bucată
Cod produs	CK6949
Pagina de catalog	Pagina 292 (C-7-2013)
GTIN	4046356758918
Greutate pe bucată (inclusiv ambalajul)	35,305 g
Greutate pe bucată (fără ambalaj)	34,2 g
Cod tarifar vamal	85364190
Țara de origine	PL

REL-IR4/LDP- 48DC/4X21 - Single relay



2903678

<https://www.phoenixcontact.com/ro/produse/2903678>

Date tehnice

Product properties

Product type	Single relay
Operating mode	100% operating factor
Mechanical service life	approx. 2×10^7 cycles

Data management status

Date of last data management	02.05.2024
Article revision	02

Insulation characteristics

Insulation	Basic insulation
Overvoltage category	II
Pollution degree	2

Electrical properties

Service life electrical	see diagram
Maximum power dissipation for nominal condition	1.06 W
Test voltage (Winding/contact)	2.5 kV _{rms} (50 Hz, 1 min., winding/contact)
Test voltage (Changeover contact/changeover contact)	2 kV _{rms} (50 Hz, 1 min., changeover contact/changeover contact)
Rated insulation voltage	250 V AC
Rated surge voltage	2.5 kV

Input data

Coil side

Nominal input voltage U_N	48 V DC
Input voltage range	38.4 V DC ... 86.4 V DC (20 °C)
Drive and function	monostable
Drive (polarity)	polarized
Typical input current at U_N	22 mA
Typical response time	13 ms
Typical release time	14 ms
Protective circuit	Freewheeling diode
Status display	LED (yellow)

Output data

Switching

Contact switching type	4 changeover contacts
Type of switch contact	Single contact
Contact material	AgNi
Maximum switching voltage	250 V AC/DC
Minimum switching voltage	5 V (At 24 mA)

REL-IR4/LDP- 48DC/4X21 - Single relay



2903678

<https://www.phoenixcontact.com/ro/produse/2903678>

Limiting continuous current	6 A
Maximum inrush current	16 A (20 ms, N/O contacts)
Min. switching current	5 mA (at 24 V)
Interrupting rating (ohmic load) max.	144 W (at 24 V DC)
	124 W (at 48 V DC)
	108 W (at 60 V DC)
	52 W (at 110 V DC)
	48 W (at 220 V DC)
	1500 VA (for 250 V AC)
Switching capacity min.	0.12 W
Switching capacity	2 A (at 24 V, DC13)
	0.22 A (at 120 V, DC13)
	0.11 A (at 250 V, DC13)
	1.5 A (at 24 V, AC15)
	1.5 A (at 120 V, AC15)
	1 A (at 240 V, AC15)
Motor load according to UL 508	1/3 HP, 240 V AC

Connection data

Connection method	Plug-in connection
-------------------	--------------------

Dimensions

Width	21.2 mm
Height	27.5 mm
Depth	35.6 mm

Environmental and real-life conditions

Ambient conditions

Degree of protection	RT I
Ambient temperature (operation)	-40 °C ... 70 °C
Ambient temperature (storage/transport)	-40 °C ... 85 °C

Approvals

Corrosive gas test

Identification	ISA-S71.04. G3 Harsh Group
	EN 60068-2-60

Standards and regulations

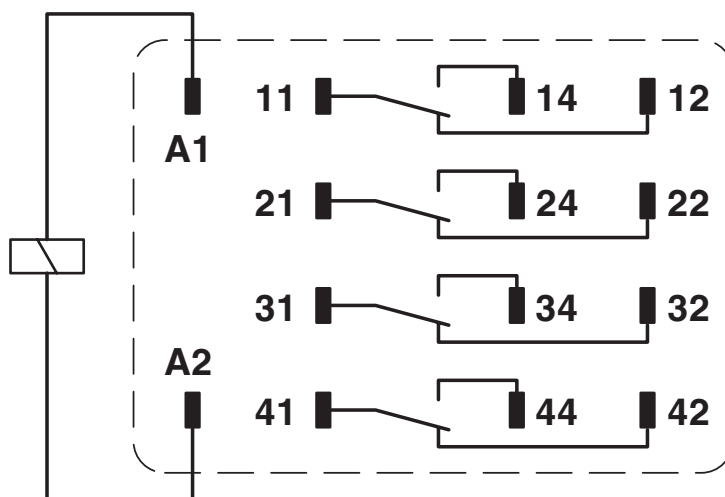
Standards/regulations	IEC 60664
	IEC 61810

Mounting

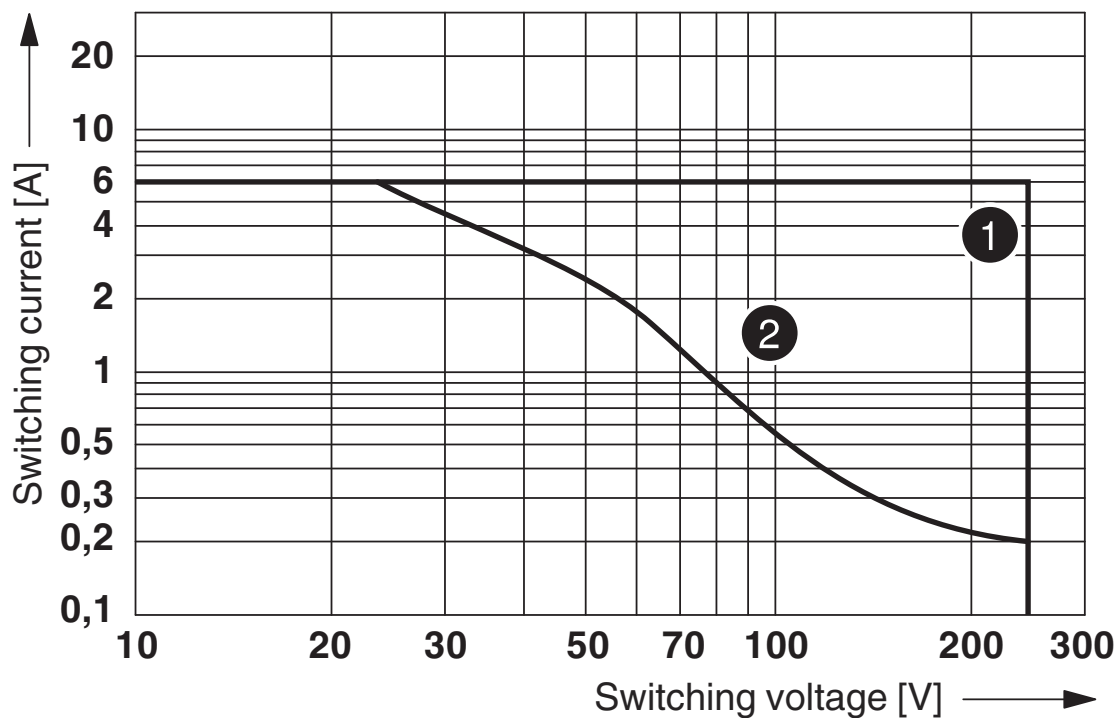
Mounting position	any
-------------------	-----

Desene

Circuit diagram

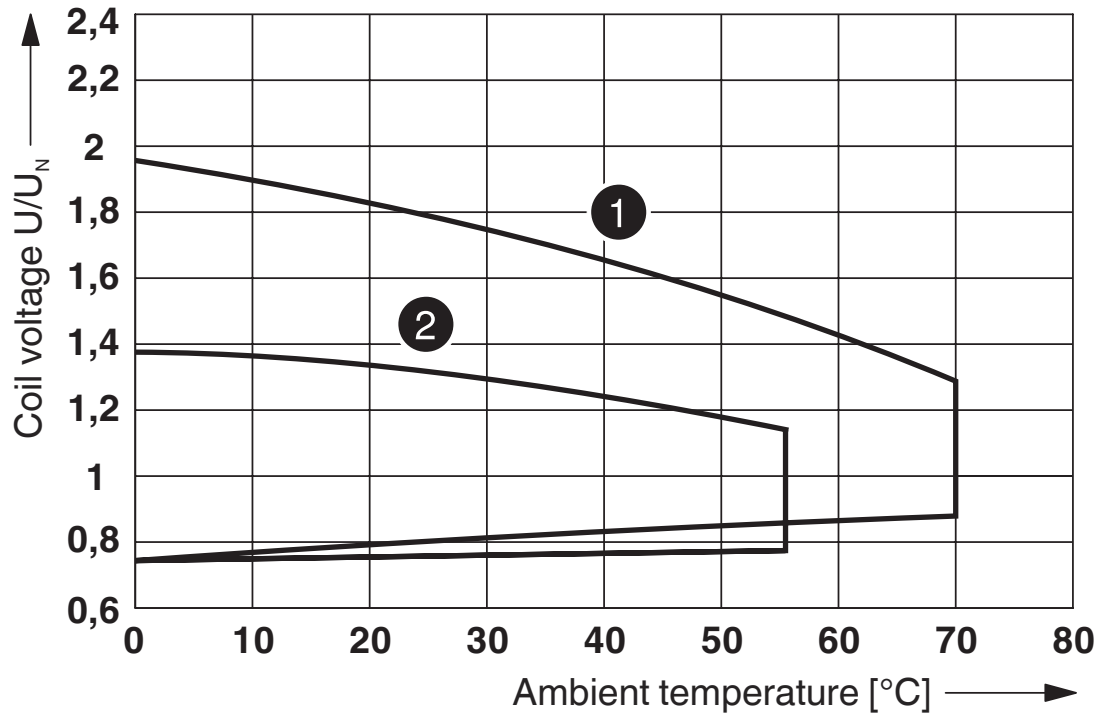


Diagram



- ① AC, ohmic load
- ② DC, ohmic load

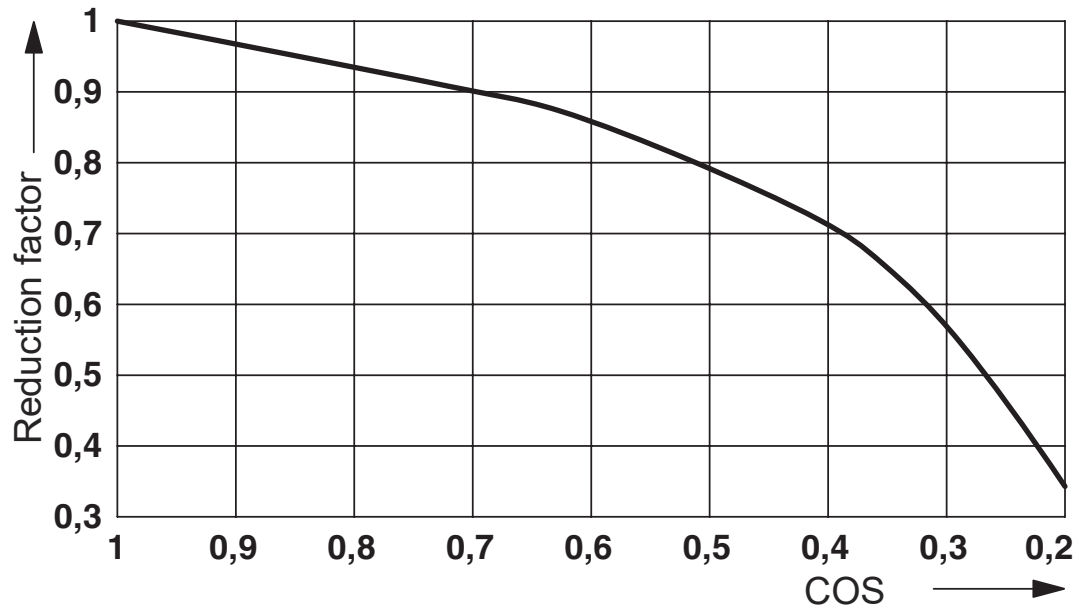
Diagram



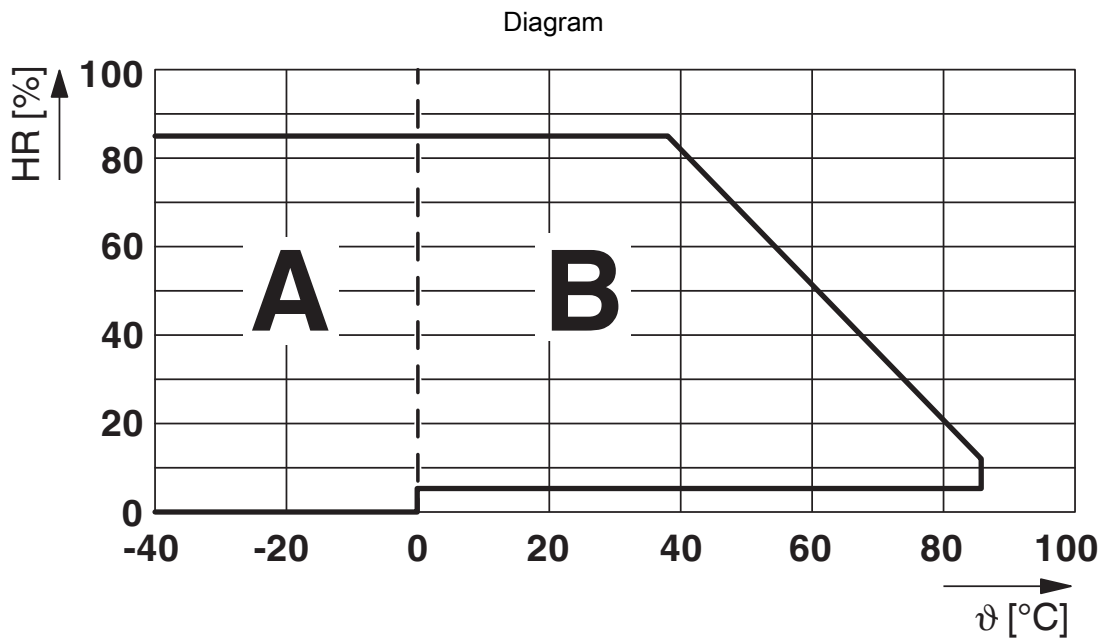
- ① DC coils
- ② AC coils

Operating voltage range

Diagram



Service life reduction factor



Permissible humidity for operation and storage.

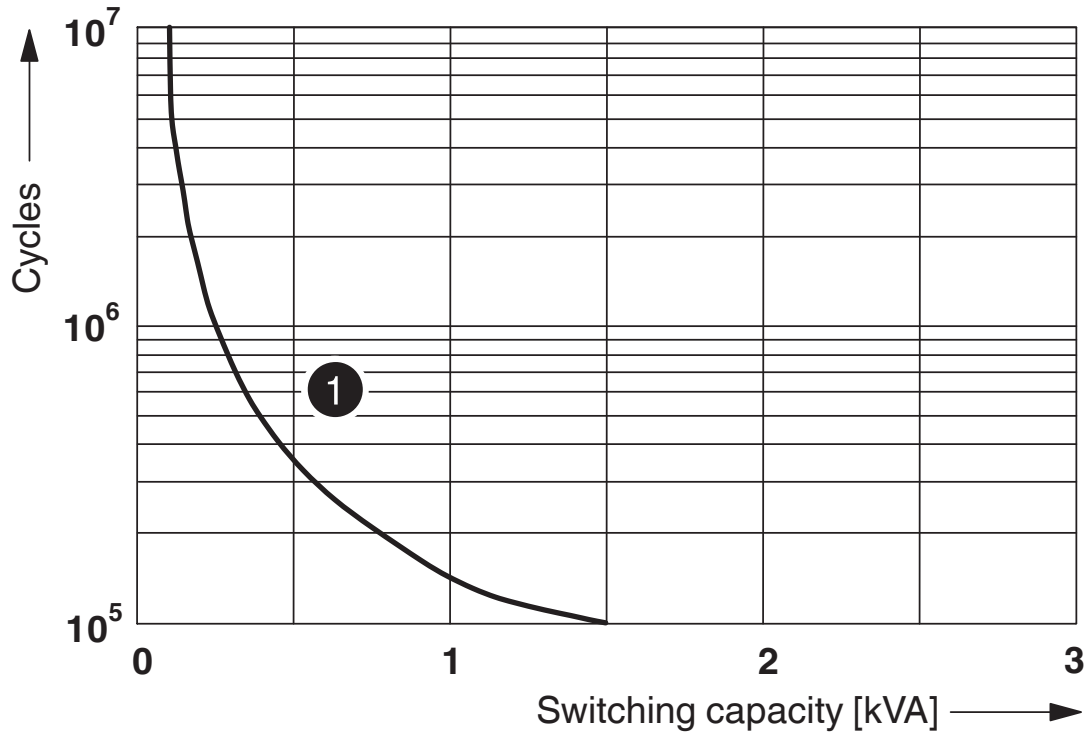
The maximum permissible ambient temperature as specified in the data sheet must be observed.

Area A: Ice buildup at ambient temperatures $\leq 0^\circ\text{C}$ must be prevented

Area B: Condensation at ambient temperatures $> 0^\circ\text{C}$ must be prevented

On 30 full days that are naturally distributed across an entire year, a humidity level of 95% is permissible at an ambient temperature $\leq 25^\circ\text{C}$.

Diagram



① 250 V AC, Ohmic load

Electrical service life

REL-IR4/LDP- 48DC/4X21 - Single relay



2903678

<https://www.phoenixcontact.com/ro/produse/2903678>

Aprobări

To download certificates, visit the product detail page: <https://www.phoenixcontact.com/ro/produse/2903678>



CSA

ID de înregistrare: 256725



cUL Recognized

ID de înregistrare: FILE E 172140



UL Recognized

ID de înregistrare: FILE E 172140



EAC

ID de înregistrare: TR_TS_D_00573_c



VDE Zeichengenehmigung

ID de înregistrare: 40040427

cULus Recognized

REL-IR4/LDP- 48DC/4X21 - Single relay



2903678

<https://www.phoenixcontact.com/ro/produse/2903678>

Clasificări

ECLASS

ECLASS-11.0	27371601
ECLASS-12.0	27371601
ECLASS-13.0	27371601

ETIM

ETIM 9.0	EC001437
----------	----------

UNSPSC

UNSPSC 21.0	39122300
-------------	----------

REL-IR4/LDP- 48DC/4X21 - Single relay



2903678

<https://www.phoenixcontact.com/ro/produse/2903678>

Environmental product compliance

EU RoHS

Îndeplinește cerințele conform directivei RoHS	Da, Nicio reglementare privind excepțiile
--	---

China RoHS

Environment friendly use period (EFUP)	EFUP-E
	Nu există substanțe periculoase peste valorile limită

EU REACH SVHC

Trimitere la substanța candidată REACH (nr. CAS)	Nicio substanță cu un procentaj masic mai mare de 0,1 %
--	---

REL-IR4/LDP- 48DC/4X21 - Single relay



2903678

<https://www.phoenixcontact.com/ro/produce/2903678>

Accesorii necesare

RIF-2-BPT/4X21 - Relay base

2900934

<https://www.phoenixcontact.com/ro/produce/2900934>

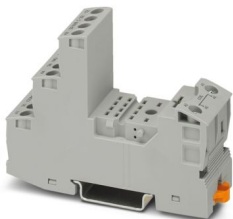


Relay base RIF-2..., for industrial relay with 2 or 4 changeover contacts, Push-in connection, plug-in option for input/interference suppression modules, for mounting on NS 35/7,5

RIF-2-BSC/4X21 - Relay base

2900932

<https://www.phoenixcontact.com/ro/produce/2900932>



RIF-2... relay base, for industrial relay with 2 or 4 changeover contacts, screw connection, plug-in option for input/interference suppression modules, for mounting on NS 35/7,5

Phoenix Contact 2024 © - Toate drepturile rezervate
<https://www.phoenixcontact.com>

PHOENIX CONTACT România
Splaiul Unirii 165 Timpuri Noi Square TNO1, Etaj 1
Bucuresti 030133
+40 21 350 88 12 - 3
sales.ro@phoenixcontact.com