



Auxiliary conductor connection 0.25 - 1 mm², for size NH2, NH3 with saddle terminal or prism terminal, accessory for fuse switch disconnecter 3NP1 Contains 3 connections

Model	
product brand name	SETRON
product designation	Auxiliary conductor connection 0.25 - 1 mm ²
design of the product	accessories for 3NP1 fuse switch disconnectors
suitability for use	for 3NP1, NH2, NH3, with retrofitted prism or saddle terminal

Accessories	
accessories	for size NH2, NH3 with saddle or prism terminal

Mechanical Design	
Net Weight	6 g

Approvals Certificates	
Environment	General Product Approval

[Environmental Con-
firmations](#)

[Environmental Con-
firmations](#)



[Miscellaneous](#)



Test Certificates	Maritime application	other
-------------------	----------------------	-------

[Type Test Certi-
ficates/Test Report](#)



[Confirmation](#)

Further information

Information on the packaging

<https://support.industry.siemens.com/cs/ww/en/view/109813875>

Information for data generation and storage

<https://support.industry.siemens.com/cs/ww/en/view/109995012>

Information- and Downloadcenter (Catalogs, Brochures,...)

<https://www.siemens.com/lowvoltage/catalogs>

Industry Mall (Online ordering system)

<https://mall.industry.siemens.com/mall/en/en/Catalog/product?mlfb=3NP1953-1BG30>

Service&Support (Manuals, Certificates, Characteristics, FAQs,...)

<https://support.industry.siemens.com/cs/ww/en/ps/3NP1953-1BG30>

Image database (product images, 2D dimension drawings, 3D models, device circuit diagrams, ...)

https://www.automation.siemens.com/bilddb/cax_en.aspx?mlfb=3NP1953-1BG30

CAX-Online-Generator

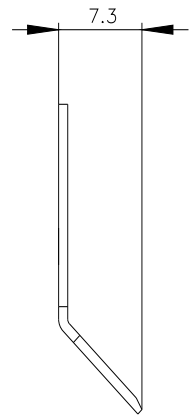
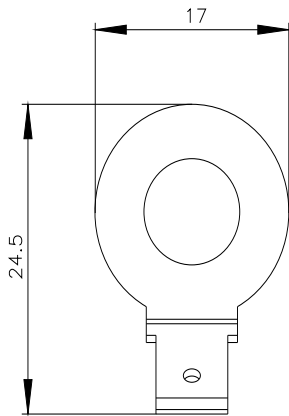
<https://www.siemens.com/cax>

Tender specifications

<https://www.siemens.com/specifications>

Characteristic curves

https://curves.simaris.siemens.com/curves/<mmp_prod_noCOMP='HAUPT'></mmp_prod_no>



last modified:

4/12/2025 

