



LV HRC fuse element, NH2, In: 315 A, gG, Un AC: 400 V, Combined indicator, insulated Grip lugs

Figure similar

Model		
product brand name	SENTRON	
product designation	LV HRC fuse link	
design of the product	With blade contacts	
design of an identification indicator	Combination alarms	
design of the switching contact	Non-corroding, silver-plated	
design of the fuse link	LV HRC fuse link	
General technical data		
size of fuse system according to EN 60269-1	NH2	
operating class of the fuse link	gG	
mounting type	insulated grip lugs	
type of voltage of the operating voltage	AC	
operational current at AC rated value	315 A	
supply voltage	400 V	
• at AC		
Protection class		
protection class IP	IP20, with connected conductors	
Breaking Capacity		
breaking capacity at AC according to IEC 60269 rated value	120 kA	
Dissipation		
power loss [W]	25.07 W	
power loss [W] for rated value of the current at AC in hot operating state per pole	25 W	
Mechanical Design		
width of the enclosure	57.8 mm	
mounting position	Any, preferably vertical	
Net Weight	662 g	
Environmental conditions		
ambient temperature during operation		
• minimum	-5 °C	
• maximum	40 °C	
environmental category	-20 to +50 at 95% relative humidity	
environmental category during storage	90% at 20°C	
Certificates		
reference code according to IEC 81346-2	FC	
Approvals Certificates		
Environment	General Product Approval	Maritime application



other

[Miscellaneous](#)

#### Further information

Information on the packaging

<https://support.industry.siemens.com/cs/ww/en/view/109813875>

Information for data generation and storage

<https://support.industry.siemens.com/cs/ww/en/view/109995012>

Information- and Downloadcenter (Catalogs, Brochures,...)

<https://www.siemens.com/lowvoltage/catalogs>

Industry Mall (Online ordering system)

<https://mall.industry.siemens.com/mall/en/en/Catalog/product?mlfb=3NA6252-4>

Service&Support (Manuals, Certificates, Characteristics, FAQs,...)

<https://support.industry.siemens.com/cs/ww/en/ps/3NA6252-4>

Image database (product images, 2D dimension drawings, 3D models, device circuit diagrams, ...)

[https://www.automation.siemens.com/bilddb/cax\\_en.aspx?mlfb=3NA6252-4](https://www.automation.siemens.com/bilddb/cax_en.aspx?mlfb=3NA6252-4)

CAX-Online-Generator

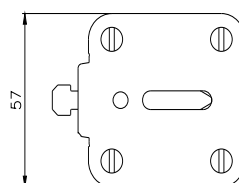
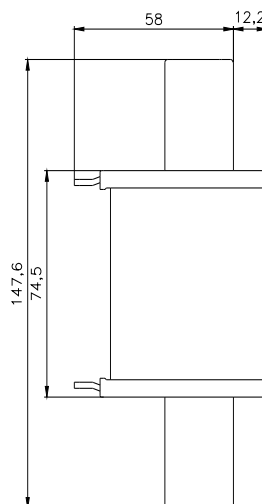
<https://www.siemens.com/cax>

Tender specifications

<https://www.siemens.com/specifications>

Characteristic curves

[https://curves.simaris.siemens.com/curves/<mmp\\_prod\\_noCOMP="HAUPT"></mmp\\_prod\\_no>](https://curves.simaris.siemens.com/curves/<mmp_prod_noCOMP=)



**-F**



**FU**



