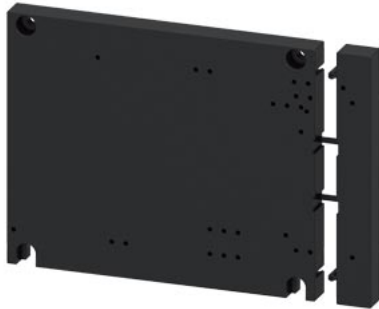


base plate for mounting assemblies of three contactors (3x3RT2.4 or 2x3RT2.4 and 1x3RT2.3) for star-delta (wye-delta) starting





product brand name	SIRIUS
product category	Base plates
product designation	Base plate
product type designation	3RA29

General technical data	
Substance Prohibitation (Date)	07/01/2006
Net Weight	0.276 kg

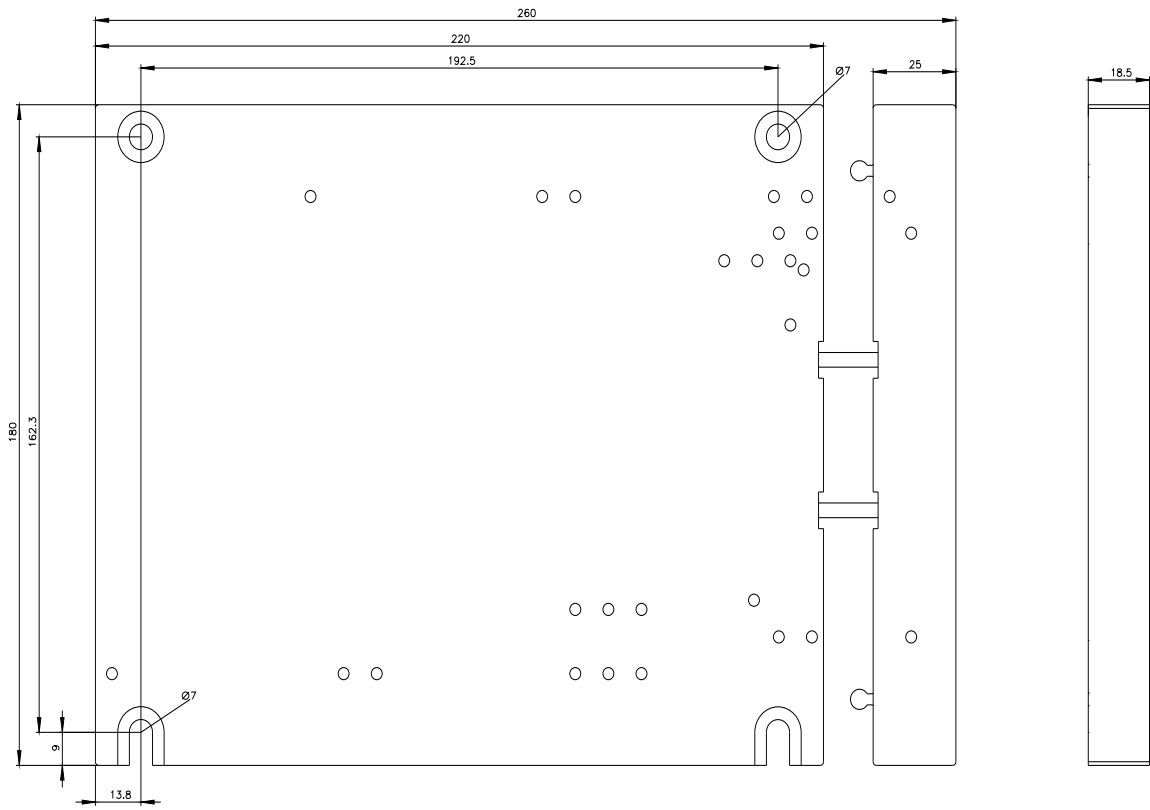
Approvals Certificates

Environment	General Product Approval	Maritime application
Environmental Conformations     		

Maritime application	other
 	Confirmation

Further information

- Information on the packaging
<https://support.industry.siemens.com/cs/ww/en/view/109813875>
- Information for data generation and storage
<https://support.industry.siemens.com/cs/ww/en/view/109995012>
- Information- and Downloadcenter (Catalogs, Brochures,...)
<https://www.siemens.com/ic10>
- Industry Mall (Online ordering system)
<https://mall.industry.siemens.com/mall/en/en/Catalog/product?mlfb=3RA2942-2F>
- Cax online generator
<https://support.automation.siemens.com/WW/CAXorder/default.aspx?lang=en&mlfb=3RA2942-2F>
- Service&Support (Manuals, Certificates, Characteristics, FAQs,...)
<https://support.industry.siemens.com/cs/ww/en/ps/3RA2942-2F>
- Image database (product images, 2D dimension drawings, 3D models, device circuit diagrams, EPLAN macros, ...)
https://www.automation.siemens.com/bilddb/cax_de.aspx?mlfb=3RA2942-2F&lang=en



last modified:

10/22/2025 