



LV HRC fuse element, NH2, In: 80 A, gG, Un AC: 500 V, Un DC: 440 V, Front indicator, live grip lugs

| Model  |                                     |
|--|-------------------------------------|
| product brand name   | SETRON                              |
| product designation  | LV HRC fuse link                    |
| design of the product  | With blade contacts                 |
| design of an identification indicator  | Front indicators                    |
| design of the switching contact  | Non-corroding, silver-plated        |
| design of the fuse link  | LV HRC fuse link                    |
| General technical data   |                                     |
| size of fuse system according to EN 60269-1  | NH2                                 |
| operating class of the fuse link   | gG                                  |
| mounting type  | non-insulated grip lugs             |
| type of voltage of the operating voltage   | AC/DC                               |
| operational current at AC rated value  | 80 A                                |
| supply voltage   |                                     |
| • at AC  | 500 V                               |
| • at DC  | 440 V                               |
| Protection class   |                                     |
| protection class IP  | IP20, with connected conductors     |
| Breaking Capacity  |                                     |
| breaking capacity at AC according to IEC 60269 rated value                                 | 120 kA                              |
| breaking capacity at DC with time constant $\leq 10$ ms according to IEC 60269 rated value | 25 kA                               |
| Dissipation  |                                     |
| power loss [W]   | 6.8 W                               |
| power loss [W] for rated value of the current at AC in hot operating state per pole        | 7 W                                 |
| Mechanical Design  |                                     |
| width of the enclosure   | 47.2 mm                             |
| mounting position  | Any, preferably vertical            |
| Net Weight   | 459 g                               |
| Environmental conditions   |                                     |
| ambient temperature during operation   |                                     |
| • minimum  | -5 °C                               |
| • maximum  | 40 °C                               |
| environmental category   | -20 to +50 at 95% relative humidity |
| environmental category during storage  | 90% at 20°C                         |
| Certificates   |                                     |
| reference code according to IEC 81346-2  | FC                                  |
| Approvals Certificates   |                                     |

[Environmental Con-  
firmations](#)

[Environmental Con-  
firmations](#)



General Product Ap-  
proval

Maritime application

other



[Miscellaneous](#)

#### Further information

##### Information on the packaging

<https://support.industry.siemens.com/cs/ww/en/view/109813875>

##### Information for data generation and storage

<https://support.industry.siemens.com/cs/ww/en/view/109995012>

##### Information- and Downloadcenter (Catalogs, Brochures,...)

<https://www.siemens.com/lowvoltage/catalogs>

##### Industry Mall (Online ordering system)

<https://mall.industry.siemens.com/mall/en/en/Catalog/product?mlfb=3NA3224>

##### Service&Support (Manuals, Certificates, Characteristics, FAQs,...)

<https://support.industry.siemens.com/cs/ww/en/ps/3NA3224>

##### Image database (product images, 2D dimension drawings, 3D models, device circuit diagrams, ...)

[https://www.automation.siemens.com/bilddb/cax\\_en.aspx?mlfb=3NA3224](https://www.automation.siemens.com/bilddb/cax_en.aspx?mlfb=3NA3224)

##### CAX-Online-Generator

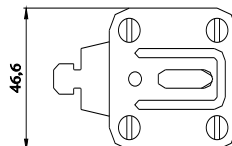
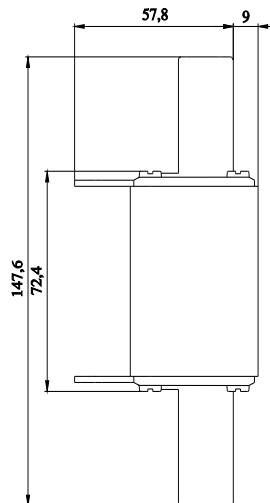
<https://www.siemens.com/cax>

##### Tender specifications

<https://www.siemens.com/specifications>

##### Characteristic curves

[https://curves.simaris.siemens.com/curves/<mmp\\_prod\\_noCOMP="HAUPT"></mmp\\_prod\\_no>](https://curves.simaris.siemens.com/curves/<mmp_prod_noCOMP=)



**-F**



**FU**



