

Fișă tehnică produs

Specificatii



Releu miniatura 3A,4C/O, fara LED, 24V C.A.

RXM4LB1B7

Principale

gama de produse	Harmony Electromechanical Relays
nume serie	RXM series
Tip produs sau componenta	Releu conectabil
tip releu	Miniature relay
tip si compozitie contacte	4 C/O
tensiune circuit de comanda	24 V c.a. 50/60 Hz
[Ithe] curent termic conventional	3 A la -40...55 °C

Suplimentare

LED de stare	Fara
tip de control	Fără buton de test cu blocare
[Ie] curent nominal de utilizare	1,5 A la 28 V (DC) NC conformitate cu IEC 1,5 A la 250 V (AC) NC conformitate cu IEC 3 A la 28 V (DC) nu conformitate cu IEC 3 A la 250 V (AC) nu conformitate cu IEC 3 A la 24 V (DC) nu conformitate cu IEC 3 A la 220 V (AC) nu conformitate cu IEC 3 A la 28 V (DC) conformitate cu UL 3 A la 250 V (AC) conformitate cu UL
capacitate minima de comutatie	25 mW subject to switching frequency, environment or expected reliability level etc
limite ale tensiunii nominale de functionare	19.2...26.4 V c.a.
[Ui] tensiune nominala de izolatie	250 V conformitate cu IEC
tensiunea maxima de comutatie	250 V c.a. 28 V c.c.
prag de tensiune pentru decuplare	$\geq 0.15 U_c$ c.a.
curent de sarcina	3 A la 250 V c.a. 3 A la 28 V c.c.
capacitate de comutatie maxima	750 VA c.a. 84 W c.c.
curentul minim de comutare	5 mA subject to switching frequency, environment or expected reliability level etc
tensiunea minima de comutare	5 V subject to switching frequency, environment or expected reliability level etc
rezistenta medie	180 Ohm la 23 °C +/- 10 %
durabilitate mecanica	20000000 cic
durabilitate electrica	200000 cic rezistiv sarcina 23 °C 100000 cic rezistiv sarcina la 55 °C
fiabilitate securitate date	B10d = 100000

rata de operare	<= 1200 cicluri/oră sub sarcină <= 18000 cicluri/oră fara sarcina
coeficient de utilizare	20 %
rigiditate dielectrica	2000 V c.a. între bobină și contact cu Izolatie de baza izolație 2000 V c.a. între poli cu Izolatie de baza izolație 1000 V c.a. între contacte cu micro deconectare izolație
categorie de protectie	RT I
Grad de poluare	2
pozitie de operare	Orice pozitie
niveluri de testare	Nivel A group mounting
cantitate indivizibila de vanzare	10
Material contacte	Aliaj de argint (Ag/Ni)
forma a pinului	Flat (faston type)
greutate produs	0,034 kg

Mediu

standarde	IEC 61810-1 (iss. 2) CE UL 60947-1
temperatura ambietala pentru depozitare	-40...85 °C
rezistenta la vibratii	3 gn, amplitudine = +/- 1 mm (f = 10...50 Hz)funcționare conformitate cu IEC 60068-2-6 6 gn, amplitudine = +/- 1 mm (f = 10...50 Hz)nu functioneaza conformitate cu IEC 60068-2-6
rezistenta la socuri	30 gn pentru nu functioneaza conformitate cu IEC 60068-2-27 10 gn pentru în functionare conformitate cu IEC 60068-2-27

Unitati de ambalare

Unitate de masura pentru prima forma de impachetare	PCE
Număr de produse în pachet	1
Inaltime prima forma de impachetare	2,000 cm
Latime prima forma de impachetare	2,500 cm
Lungime prima forma de impachetare	3,500 cm
Greutate colet(Lbs)	33,000 g
Unitate de masura pentru a doua forma de impachetare	BB1
Numar unitati in a doua forma de impachetare	10
Inaltime a doua forma de impachetare	3,000 cm
Latime a doua forma de impachetare	10,000 cm
Lungime a doua forma de impachetare	12,500 cm
Greutate a doua forma de impachetare	362,000 g
Unitate de masura pentru a treia forma de impachetare	S02
Numar unitati in a treia forma de impachetare	270
Inaltime a treia forma de impachetare	15,000 cm

Latime a treia forma de impachetare	30,000 cm
Lungime a treia forma de impachetare	40,000 cm
Greutate a treia forma de impachetare	10,011 kg

Garanție contractuală

Garantie (in luni)	18
--------------------	----

Schneider Electric isi propune sa atinga nivelul Net Zero pana in 2050 prin parteneriate la nivelul lantului de aprovizionare, materiale cu impact mai redus si circularitate, prin campania „Use Better, Use Longer, Use Again” pentru a extinde durata de viata a produselor si reciclabilitatea.

[Environmental Data explicate >](#)

[Cum evaluam sustenabilitatea produselor >](#)

Amprenta de mediu

Amprenta de carbon totala pe durata de viata	17 kg CO2 eq.
Amprenta de carbon a fazei de fabricație [A1–A3]	0.3 kg CO2 eq.
Amprenta de carbon a fazei de distribuție [A4]	0 kg CO2 eq.
Amprenta de carbon a fazei de instalare [A5]	0 kg CO2 eq.
Amprenta de carbon a fazei de utilizare [B2, B3, B4, B6]	16 kg CO2 eq.
Amprenta de carbon a fazei de sfârșit de viață [C1–C4]	0 kg CO2 eq.
Raport de mediu	Profilul ambiental al produsului

Use Better

Materiale si ambalare

Pachet cu carton reciclabil	Da
Ambalaj fara plastic	Da
Directiva RoHS a UE	Conform
Regulamentul REACH	Referinta nu contine SVHC peste prag

Use Longer

Prelungire durata de viata

Reparare	Nu
----------	----

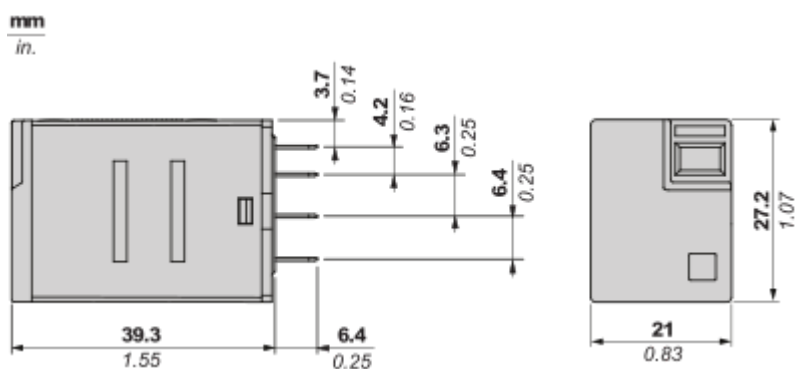
Use Again

Reambalare si refabricare

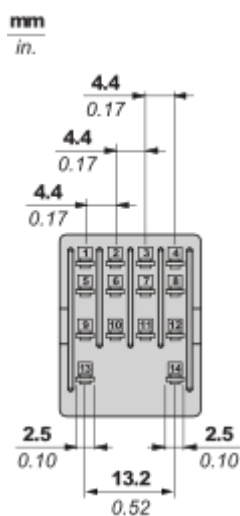
Profil circularitate	Informatii privind sfarsitul duratei de viata
Preluare la sfarsitul duratei de viata	Da
Eticheta WEEE	 În Uniunea Europeana, produsele trebuie reciclate respectand sistemul specific de colectare a deseurilor si nu trebuie sa ajunga in pubelele de colectare a deseurilor menajere.

Dimensions Drawings

Dimensions



Pin Side View

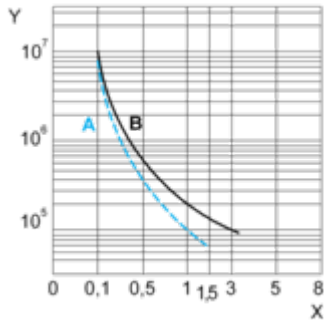


Performance Curves

Electrical Durability of Contacts

Durability (inductive load) = durability (resistive load) x reduction coefficient.

For 4 Poles Relay



X : Contact current (A)

Y : Durability (Number of operating cycles)

A : Inductive load

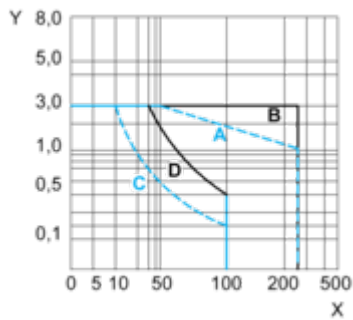
B : Resistive load

Note : These are typical curves, actual durability depends on load, environment, duty cycle, etc.

For inductive load, to increase relay life cycles, please add a proper load protection circuit (eg: RC protection/Varistor/free Wheeling diode -DC load only-)

Maximum Switching Capacity

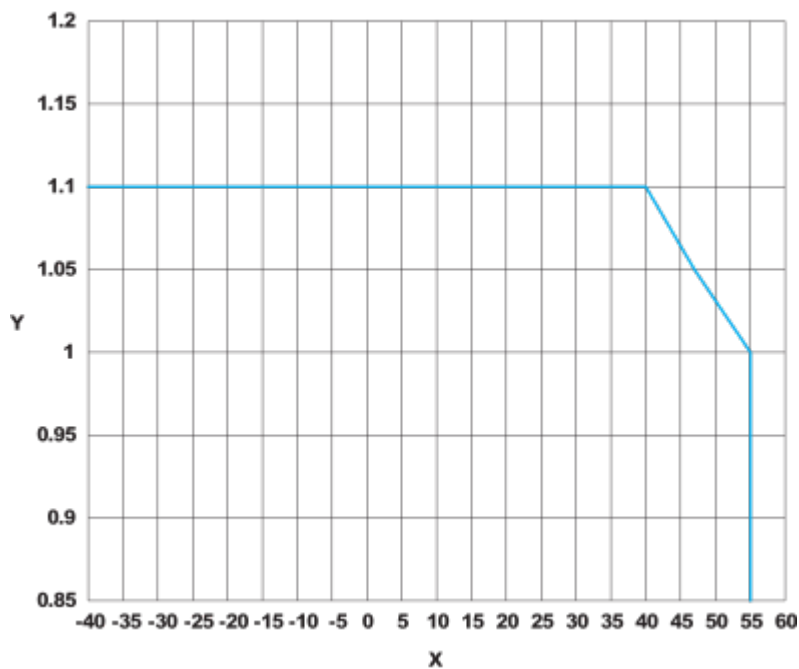
For 4 Poles Relay

**X** : Contact voltage (v)**Y** : Contact current (A)**A** : Inductive AC load**B** : Resistive AC load**C** : Inductive DC load**D** : Resistive DC load**Note** : These are typical curves, actual durability depends on load, environment, duty cycle, etc.

For inductive load, to increase relay life cycles, please add a proper load protection circuit (eg: RC protection/Varistor/free Wheeling diode -DC load only-)

For low level loads (below 10mA), we recommend to use RXM*GB series with bifurcated contacts relays instead.

AC Coil Voltage and Operating Temperature under continuous duty

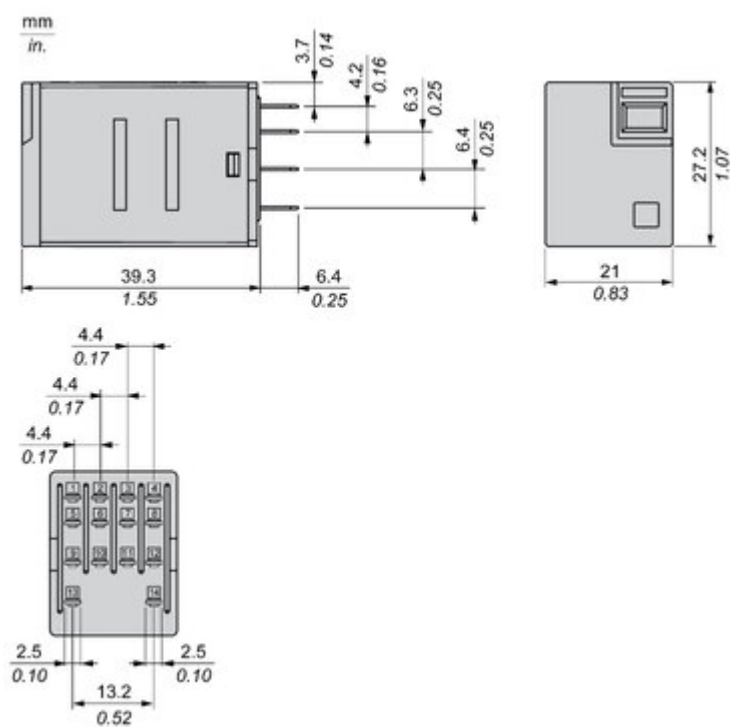


X : Operating temperature (°C)

Y : AC coil voltage (UC)

Technical Illustration

Dimensions



Offer Marketing Illustration

Product benefits / Features



The image is a green rectangular graphic with the title "Features" at the top center. Below the title is the subtitle "Easy Harmony RXMLB Relay". In the center of the graphic is a photograph of a black relay component. Surrounding the central image are four circular icons, each with a white background and a green symbol. Each icon is accompanied by a short text description of a feature. The features are: 1. Fit to customer needs (coverage of most general control panel applications), 2. Easy to select (simple selection and wide availability), 3. Convenient to use (Easy status readiness through mechanical indicator & LED), and 4. Safe to perform (product reliability, compliance with industrial standard and eco-design).

Features

Easy Harmony RXMLB Relay

-  Fit to customer needs
coverage of most general
control panel applications
-  Easy to select
simple selection and
wide availability
-  Convenient to use
Easy status readiness
through mechanical
indicator & LED
-  Safe to perform
product reliability,
compliance with
industrial standard
and eco-design

Offer Marketing Illustration

Product benefits / Features

Technical Benefits

Easy Harmony RXMLB Relay

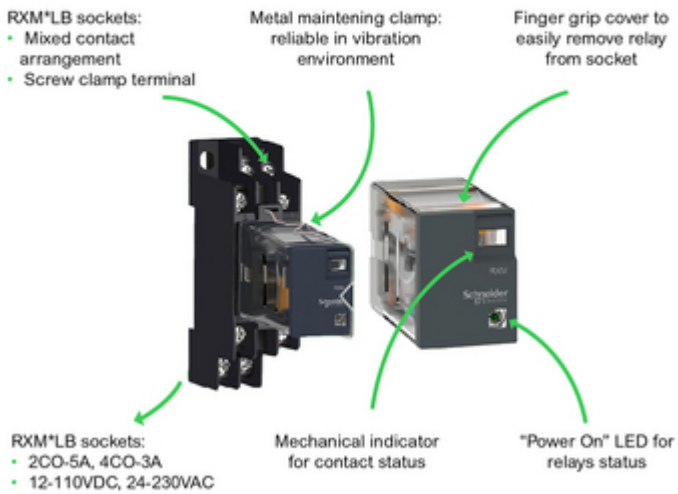


Image of product / Alternate images

Alternative

