



Auxiliary conductor connection 0.25 - 1 mm<sup>2</sup>, for size NH00 with screw terminal, accessory for fuse switch disconnecter 3NP1 Contains 3 connections

| Model                  |   |                      |
|------------------------|---|----------------------|
| product brand name     | SETRON  |                      |
| product designation    | Auxiliary conductor connection 0.25 - 1 mm <sup>2</sup> |                      |
| design of the product  | accessories for 3NP1 fuse switch disconnectors          |                      |
| suitability for use    | for 3NP1, NH00, with flat connector                     |                      |
| Accessories            |   |                      |
| accessories            | for size NH00 with screw terminals                      |                      |
| Mechanical Design      |   |                      |
| Net Weight             | 7 g   |                      |
| Approvals Certificates |   |                      |
| Environment            | General Product Approval                                | Maritime application |

[Environmental Con-  
firmations](#)

[Environmental Con-  
firmations](#)



[Miscellaneous](#)



### Further information

#### Information on the packaging

<https://support.industry.siemens.com/cs/ww/en/view/109813875>

#### Information for data generation and storage

<https://support.industry.siemens.com/cs/ww/en/view/109995012>

#### Information- and Downloadcenter (Catalogs, Brochures,...)

<https://www.siemens.com/lowvoltage/catalogs>

#### Industry Mall (Online ordering system)

<https://mall.industry.siemens.com/mall/en/en/Catalog/product?mlfb=3NP1933-1BG10>

#### Service&Support (Manuals, Certificates, Characteristics, FAQs,...)

<https://support.industry.siemens.com/cs/ww/en/ps/3NP1933-1BG10>

#### Image database (product images, 2D dimension drawings, 3D models, device circuit diagrams, ...)

[https://www.automation.siemens.com/bilddb/cax\\_en.aspx?mlfb=3NP1933-1BG10](https://www.automation.siemens.com/bilddb/cax_en.aspx?mlfb=3NP1933-1BG10)

#### CAX-Online-Generator

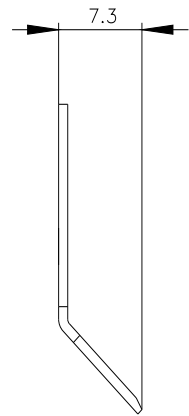
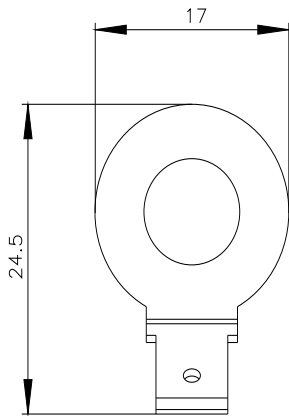
<https://www.siemens.com/cax>

#### Tender specifications

<https://www.siemens.com/specifications>

#### Characteristic curves

[https://curves.simaris.siemens.com/curves/<mmp\\_prod\\_noCOMP="HAUPT"></mmp\\_prod\\_no>](https://curves.simaris.siemens.com/curves/<mmp_prod_noCOMP=)



---

last modified:

4/12/2025 

