



APC[™]

Rack power and systems for any environment

Your solution guide for end-to-end rack architecture



Applications
& selections



Rack systems



Rack power
distribution



Accessories

Life Is On

Schneider
Electric

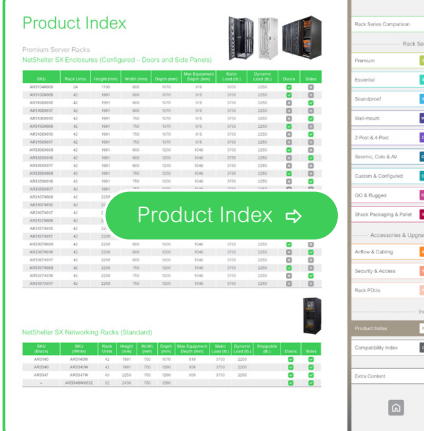
How to use this guide

Schneider Electric delivers globally available and scalable APC rack solutions for almost any application, from large-scale data centers to edge spaces and even harsh industrial environments.

With a large selection of cable management and other accessories, APC racks provide a reliable foundation for your organization's entire IT infrastructure.

Need to find a part number?

Use the quick-scan tables in the Product Index.



The screenshot shows a 'Product Index' page with two main sections: 'Premium Server Racks' and 'NetShelter SX Enclosures (Configured - Doors and Side Panels)'. Each section contains a table with columns for 'Part', 'Series', 'Configuration', 'Rack Size', 'Depth', 'Height', 'Weight', 'Power', 'Cooling', 'Accessories', and 'Status'. A green button labeled 'Product Index' with a right-pointing arrow is overlaid on the tables. To the right is a sidebar with various navigation options like 'Rack Series Comparison', 'Premium', 'Soundproof', '2-Post & 4-Post', 'Seismic, Colo & AV', 'Custom & Configured', 'Rugged', 'Shock Packaging & Pallet', 'Accessories & Upgrades', 'Airflow & Cabling', 'Security & Access', 'Rack PDUs', 'Product Index', 'Compatibility Index', and 'Extra Content'.

Need help choosing?

- 1 View the comparison charts.

[Rack PDU Series Comparison](#) →

[Rack Series Comparison](#) →

- 2 Click the tabs for detailed product specifications and value points.

- 3 Build your solution with a Schneider Electric representative.

Contact us or your preferred partner company.



[Rack PDU Series Comparison](#)

[Rack Series Comparison](#)

..... [Rack PDU Series](#)

[Advanced](#)

[AP](#)

[Premium](#)

[PR](#)

[Essential](#)

[EP](#)

[Security & Control](#)

[SC](#)

..... [Rack Series](#)

[Premium](#)

[SX](#)

[Essential](#)

[SV](#)

[Soundproof](#)

[SP](#)

[Wall-mount](#)

[WX](#)

[2-Post & 4-Post](#)

[OF](#)

[Seismic, Colo & AV](#)

[CM](#)

[Custom & Configured](#)

[CC](#)

[Rugged](#)

[RX](#)

[Shock Packaging & Pallet](#)

[SH](#)

..... [Accessories & Upgrades](#)

[Airflow & Cabling](#)

[AC](#)

[Security & Access](#)

[SA](#)

..... [Index](#)

[Product Index](#)




[PX](#)



Rack PDU Series Comparison

Product features by Rack PDU family

We offer a wide array of standardized rack power distribution units (PDUs) designed to increase manageability and efficiency in your data center. Find the right PDU for you by comparing features across our NetShelter, NetShelter Advanced and Easy PDU families.

Models	APDU11XXX	APDU10XXX	APDU9XXX	AP8XXX	AP7XXX	EPDUXXX
Rack PDU Family	 NetShelter Advanced		 NetShelter		 Easy Rack	
Availability	Global		Global		Global (excluding US & Canada)	
Specifications						
Nominal power	7.5–43.5kW	7.5–43.5kW	3.6–11kW	2.3–22kW	1.4–22kW	3.6–22kW
Maximum operating temperature	60°C	60°C	60°C	60°C	60°C	50°C
Max outlets per unit	48	48	24	42	42	24
U space (implied positioning)	0U	0U	0U–1U	0U	0U–2U	0U–1U
Basic, Metered, Switched (by Outlet or Combo)	All	All	Switched	All	All	All
Features						
High-retention outlets	•	•	•	•	•	•
Ultra-low profile circuit breakers	•	•	•	•	•	•
Locking outlets when used with locking IEC powercords	•	•	•	•	•	•
4-in-1 outlet	•	•	•	•	•	•
High-density outlets	•	•	•	•	•	•
Alternating phase and color-coded outlets	•	•	•	•	•	•
Environmental monitoring port	Up to 2	Up to 8	•	•	•	•
Ethernet connectivity	Gigabit	Gigabit	Gigabit	10/100	10/100	10/100
Network port sharing	32	32	32	4	4	4
Field-replaceable network management module	Live Swap	Live Swap	•	•	•	•
Metering accuracy	±1%	±1%	±1%	±3%	±5%	±1% or ±3%
NMC power sharing	•	•	•	•	•	•
Warranty	3 year	3 year	3 year	2 year	2 year	2 year
Management & cybersecurity						
Easy local firmware updates	•	•	•	•	•	•
Remote firmware updates	•	•	•	•	•	•
User access control	•	•	•	•	•	Limited
Remote outlet control, power sequencing, and grouping	•	•	•	•	•	•
NMC3-enabled	•	•	•	•	•	•
EcoStruxure™ IT compatibility	•	Limited	•	•	•	•
1 year free subscription to Secure NMC System	•	•	•	•	•	•

Intelligent power management options

- **Metered:** Real-time remote monitoring of connected loads; user-defined alarms that warn of potential circuit overloads before critical IT failures occur
- **Switched:** Advanced load monitoring combined with remote on/off switching control of individual outlets for power cycling, delayed power sequencing, and outlet use management
- **Metered-by-outlet:** Real-time remote monitoring of each individual outlet
- **Metered-by-outlet with switching:** Real-time remote monitoring of each individual outlet combined with remote on/off outlet switching

Rack PDU Series Comparison

Rack Series Comparison

..... Rack PDU Series

Advanced

AP

Premium

PR

Essential

EP

Security & Control

SC

..... Rack Series

Premium

SX

Essential

SV

Soundproof

SP

Wall-mount

WX

2-Post & 4-Post

OF

Seismic, Colo & AV

CM

Custom & Configured

CC

Rugged

RX

Shock Packaging & Pallet

SH

..... Accessories & Upgrades

Airflow & Cabling

AC

Security & Access

SA

..... Index

Product Index

PX



Rack series comparison

Product feature by rack family

									
	SX	SV	Easy	Seismic	Soundproof	Wall-mount	Open Frame	GO Rack	Rugged
Application	Data Center			Commercial	Network Closet			Harsh	
Specifications									
RU sizes	12–52U	42 & 48U	24–48U	42U	12–38U	6–13U	44 & 45U	18–42U	16–42U
Colors	Blk/Wht	Black	Black	Black	Oak/Wood	Black	Black	Black	Grey/Wht
Depth									
X large: > 1400 mm									
Large: >1200 mm	•	•	•						•
Standard: 1000–1200 mm	•	•	•	•	•			•	•
Short: < 1000 mm			•			•	•	•	•
Width									
X wide: 800 mm	•	•	•					•	•
Wide: 750 mm	•				•				
Standard: 600 mm	•	•	•	•		•	•	•	•
Static load									
XL: > 1928 kg									
L: > 1350 kg	L	M	M	S	L	S	S	S	S/M
M: 900–1350 kg									
S: < 900kg									
Rolling load (on casters)									
XL: > 1580 kg									
L: > 900 kg	L	M	M	S	M	S	S	S	S/M
M: 450–900 kg									
S: < 450 kg									
Max equipment mounting depth									
XL: > 1100 mm									
L: > 900 mm	L	M	M/L	M	M	S/M	S	S/M	S/M
M: 700–900 mm									
S: < 700 mm									
Features									
Toolless features	•								
EIA 19" rails	•	•	•	•	•	•	•	•	•
Casters included	•	•	•	•	•			•	•
Zero U accessory channel	•	•	•		•		•	•	Limited
Cable management accessories	•	•	•				•	•	
Top cable entry	•	•	•	•		•	•	•	
Bottom cable entry	•	•	•	•	•	•	•	•	•
PDU included					•				Optional
Special features									
Noise reduction					•				
Built-in fan ventilation					•	6U Low Profile		Optional	Optional
Containment compatibility	•		•						
Ratings and certifications									
UL	•	•		•	•	•			•
NEBS				•					
RoHS/REACH	•	•	•	•	•	•	•		
ISTA	•			•					
NEMA/IP rated									•
Seismic rating				•					
Ordering and delivery									
Regional availability	Global	US Only	Global (Not US & CA)	Global	Global	Global	Global	MEA Only	Global
Shock packaging option	•								
Flatpack option								•	
Warranty	5 years	5 years	5 years	5 years	2 years	5 years	5 years	5 years	1 year

Rack PDU Series Comparison

Rack Series Comparison

..... Rack PDU Series

Advanced 

Premium 


Essential 

Security & Control 

..... Rack Series

Premium 

Essential 

Soundproof 

Wall-mount 

2-Post & 4-Post 

Seismic, Colo & AV 

Custom & Configured 

Rugged 

Shock Packaging & Pallet 

..... Accessories & Upgrades

Airflow & Cabling 

Security & Access 

..... Index

Product Index 



NetShelter™ Rack PDU Advanced

APC NetShelter Rack PDU Advanced (11K Series) helps you simplify data center planning and tackle AI with a 4-in-1 outlet and higher-density load capacity, so you can deploy IT faster and deliver more power to each rack, while minimizing downtime.



Future-ready 4-in-1 outlet

50% of outlets on each PDU are combination C13, C15, C19, and C21



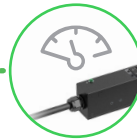
More power

Up to 48 outlets and 43.5kW on one PDU (34.6kW de-rated for North America)



Slim design, longer cord

Add more PDUs to the same rack and ensure they reach your power supply



1% metering accuracy

Know exactly how much power each outlet uses



60°C operating temperature

Can operate at higher temperatures to protect equipment from downtime



Enhanced cybersecurity

- NMC3 platform meets IEC-62443-4-2 certification
- Maintain certification with EcoStruxure IT or Secure NMC System subscription



Fast, flexible mounting

Toollessly mount in APC and most industry standard racks with optional side mounting for narrow racks



Easy upgrade with Live Swap

Update your existing PDU module effortlessly; available individually or in packs of 50



Alternating phase and color-coded outlets

Quickly see which breaker protects which outlets; simplify installation and setup, including load balancing



Full EcoStruxure IT compatibility with Secure NMC System

Integrate with EcoStruxure IT through an NMC3 to monitor sensors and alarms; manage mass firmware upgrades, configuration, or outlet control; and connect remotely.

Rack PDU Series Comparison

Rack Series Comparison

Rack PDU Series

Advanced **AP**

Premium **PR**

Essential **EP**

Security & Control **SC**

Rack Series

Premium **SX**

Essential **SV**

Soundproof **SP**

Wall-mount **WX**

2-Post & 4-Post **OF**

Seismic, Colo & AV **CM**

Custom & Configured **CC**

Rugged **RX**

Shock Packaging & Pallet **SH**

Accessories & Upgrades

Airflow & Cabling **AC**

Security & Access **SA**

Index

Product Index **PX**



NetShelter Rack PDU Advanced

Feature	Description
1 Ratings for worldwide use	Certifications to allow for one PDU to be used globally: UL, CE, CSA, UKCA, Nemiko, PSE, KC, China RoHS, RCM, and CMIM
2 1% metering accuracy	1% metering accuracy for reliable billing, capacity planning, and alarm monitoring
3 Hydraulic magnetic circuit breakers	Provide increased availability by maintaining trip current over a wide temperature range
4 Circuit breaker monitoring	Allows total load across each circuit breaker to be monitored for potential overloads and can be configured to provide notification in the event of a circuit breaker trip
5 More power, more outlets, less space	Support up to 48 outlets and 43.5 kW (34.6 kW de-rated for North America) in single- or 3-phase options
6 4-in-1 outlets	Easily match plugs to outlets: each PDU features outlets where half can accommodate C13/C19 and C15/C21 in a versatile 4-in-1 combination
7 Color-coded outlets & alternating phases	Breakers and input phases are clearly labeled and color coded to reduce errors and to promote load balancing and cord management
8 60° C operating temperature	Rated and approved to operate up to 60° C (140° F) at full load, ensuring reliability and availability even in today's high-density deployments
9 Flexible mounting	Standard vertical and side-mount options
10 USB port	Port to download log files to a flash drive
11 Console port (USB Micro-B)	Connects the Rack PDU to your computer for local access to the command line interface (CLI)
12 Dual environment sensor ports	Connect up to 2 sensors through 1 rack PDU — critical for AI and high densities
13 Link 1 and link 2 ports	Network port sharing (NPS) connects multiple Rack PDUs to one another and enables power sharing between Rack PDUs in a cascading group; access, configure, and manage up to 32 PDUs remotely through one IP address via web and SNMP
14 1-gigabit Ethernet port	One-gigabit Ethernet/network port (10/100/1000) enhances and standardizes network connectivity across all assets in the data center



Engineer-to-Order Rack PDUS

Have a large order and not finding what you are looking for?
 Engineer-to-order your Rack PDU with best-in-class APC NetShelter Rack PDU Advanced features and functionality.

Request your engineer-to-order PDU solution today: customracks@se.com.

Rack PDU Series Comparison

Rack Series Comparison

..... Rack PDU Series

Advanced

AP

Premium

PR

Essential

EP

Security & Control

SC

..... Rack Series

Premium

SX

Essential

SV

Soundproof

SP

Wall-mount

WX

2-Post & 4-Post

OF

Seismic, Colo & AV

CM

Custom & Configured

CC

Rugged

RX

Shock Packaging & Pallet

SH

..... Accessories & Upgrades

Airflow & Cabling

AC

Security & Access

SA

..... Index

Product Index

PX



NetShelter Rack PDU Advanced

NetShelter Rack PDU Advanced Series (11K series)

Voltage	Mounting U-space	Nominal voltage	Available in*	Input circuit	Nominal power	Input plug type**	Output receptacles†	Cord length	Breakers	Model
Metered	Vertical, 0U	230	WW	32 A, 1φ	7.4 kW	IEC-309 32 A	(20) C13/15 (20) 4-in-1	3 m	2	APDU11150ME
	Vertical, 0U	400-415	WW	16 (IEC), 20 (UL) A, 3φ	11.0 (IEC), 11.5 (UL) kW	IEC-309 20 A 3P+N+PE	(21) C13/15 (21) 4-in-1	3 m	0	APDU11250ME
	Vertical, 0U	400-415	WW	32 (IEC), 30 (UL) A, 3φ	22.1 (IEC), 17.3 (UL) kW	IEC-309 30 A 3P+N+PE	(24) C13/15 (24) 4-in-1	3 m	6	APDU11350ME
	Vertical, 0U	400-415	WW	63 (IEC), 60 (UL) A, 3φ	43.5 (IEC), 34.6 (UL) kW	IEC-309 60 A 3P+N+PE	(21) C13/15 (21) 4-in-1	3 m	12	APDU11450ME
	Vertical, 0U	208	NAM	30 (UL) A, 1φ	5.0 (UL) kW	NEMA L6-30P	(20) C13/15 (20) 4-in-1	3 m	2	APDU11151ME
	Vertical, 0U	208	NAM	30 (UL) A, 3φ	8.6 (UL) kW	NEMA L21-30P	(21) C13/15 (21) 4-in-1	3 m	3	APDU11351ME
	Vertical, 0U	208	NAM	50 (UL) A, 3φ	14.4 (UL) kW	CS8365C	(21) C13/15 (21) 4-in-1	3 m	6	APDU11451ME
	Vertical, 0U	208	NAM	60 (UL) A, 3φ	17.3 (UL) kW	IEC-309 60 A 3P+PE	(21) C13/15 (21) 4-in-1	3 m	6	APDU11452ME
Metered -by- Outlet	Vertical, 0U	400-415	WW	32 (IEC), 30 (UL) A, 3φ	22.1 (IEC), 17.3 (UL) kW	IEC-309 32 A 3P+N+PE	(24) C13/15 (24) 4-in-1	3 m	6	APDU11350MO
	Vertical, 0U	208	NAM	60 (UL) A, 3φ	17.3 (UL) kW	IEC-309 60 A 3P+PE	(21) C13/15 (21) 4-in-1	3 m	6	APDU11452MO
Switched	Vertical, 0U	230	WW	32 A, 1φ	7.4 kW	IEC-309 32 A	(20) C13/15 (20) 4-in-1	3 m	2	APDU11150SW
	Vertical, 0U	400-415	WW	16 (IEC), 20 (UL) A, 3φ	11.0 (IEC), 11.5 (UL) kW	IEC-309 20 A 3P+N+PE	(21) C13/15 (21) 4-in-1	3 m	0	APDU11250SW
	Vertical, 0U	400-415	WW	32 (IEC), 30 (UL) A, 3φ	22.1 (IEC), 17.3 (UL) kW	IEC-309 30 A 3P+N+PE	(24) C13/15 (24) 4-in-1	3 m	6	APDU11350SW
	Vertical, 0U	400-415	WW	63 (IEC), 60 (UL) A, 3φ	43.5 (IEC), 34.6 (UL) kW	IEC-309 60 A 3P+N+PE	(21) C13/15 (21) 4-in-1	3 m	12	APDU11450SW
	Vertical, 0U	208	NAM	30 (UL) A, 1φ	5 (UL) kW	NEMA L6-30P	(20) C13/15 (20) 4-in-1	3 m	2	APDU11151SW
	Vertical, 0U	208	NAM	30 (UL) A, 3φ	8.6 (UL) kW	NEMA L21-30P	(24) C13/15 (24) 4-in-1	3 m	3	APDU11351SW
	Vertical, 0U	208	NAM	50 (UL) A, 3φ	14.4 (UL) kW	CS8365C	(21) C13/15 (21) 4-in-1	3 m	6	APDU11451SW
	Vertical, 0U	208	NAM	60 (UL) A, 3φ	17.3 (UL) kW	IEC-309 60 A 3P+PE	(21) C13/15 (21) 4-in-1	3 m	6	APDU11452SW
Metered-by-Outlet with Switching	Vertical, 0U	230	WW	32 A, 1φ	7.4 kW	IEC-309 32 A	(20) C13/15 (20) 4-in-1	3 m	2	APDU11150SM
	Vertical, 0U	400-415	WW	16 (IEC), 20 (UL) A, 3φ	11.0 (IEC), 11.5 (UL) kW	IEC-309 20 A 3P+N+PE	(24) C13/15 (24) 4-in-1	3 m	0	APDU11250SM
	Vertical, 0U	400-415	WW	32 (IEC), 30 (UL) A, 3φ	22.1 (IEC), 17.3 (UL) kW	IEC-309 30 A 3P+N+PE	(24) C13/15 (24) 4-in-1	3 m	6	APDU11350SM
	Vertical, 0U	400-415	WW	63 (IEC), 60 (UL) A, 3φ	43.5 (IEC), 34.6 (UL) kW	IEC-309 60 A 3P+N+PE	(21) C13/15 (21) 4-in-1	3 m	12	APDU11450SM
	Vertical, 0U	208	NAM	30 (UL) A, 1φ	5 (UL) kW	NEMA L6-30P	(20) C13/15 (20) 4-in-1	3 m	2	APDU11151SM
	Vertical, 0U	208	NAM	30 (UL) A, 3φ	8.6 (UL) kW	NEMA L21-30P	(24) C13/15 (24) 4-in-1	3 m	3	APDU11351SM
	Vertical, 0U	208	NAM	50 (UL) A, 3φ	14.4 (UL) kW	CS8365C	(21) C13/15 (21) 4-in-1	3 m	6	APDU11451SM
	Vertical, 0U	208	NAM	60 (UL) A, 3φ	17.3 (UL) kW	IEC-309 60 A 3P+PE	(21) C13/15 (21) 4-in-1	3 m	6	APDU11452SM

Regional availability key: **NAM** = North America; **WW** = Worldwide

*Commercial Reference (CR) availability is generalized and may not cover all countries. **Please check our website to confirm specific CR availability in your country.**

**IEC Input Plug options listed are IP44 plug types; †4-in-1 outlet acts as C13/C15/C19/C21 outlet.

Network Management Card 3 (for NetShelter Rack PDU Advanced 11K Series)

Description	Available in	Model
APC NetShelter Rack PDU Advanced Display Module with Embedded NMC3	WW	APDU9640NMC3
APC NetShelter Rack PDU Advanced Display Module with Embedded NMC3 – Master Pack (QTY 50)	WW	APDU9640NMC3-MP50

Rack PDU Series Comparison

Rack Series Comparison

Rack PDU Series

Advanced **AP**

Premium **PR**

Essential **EP**

Security & Control **SC**

Rack Series

Premium **SX**

Essential **SV**

Soundproof **SP**

Wall-mount **WX**

2-Post & 4-Post **OF**

Seismic, Colo & AV **CM**

Custom & Configured **CC**

Rugged **RX**

Shock Packaging & Pallet **SH**

Accessories & Upgrades

Airflow & Cabling **AC**

Security & Access **SA**

Index

Product Index **PX**



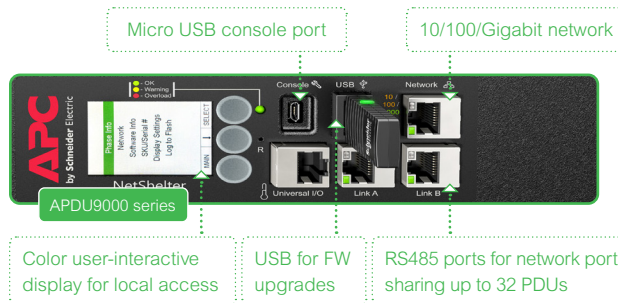
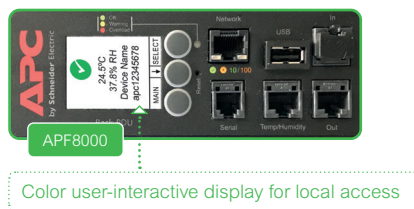
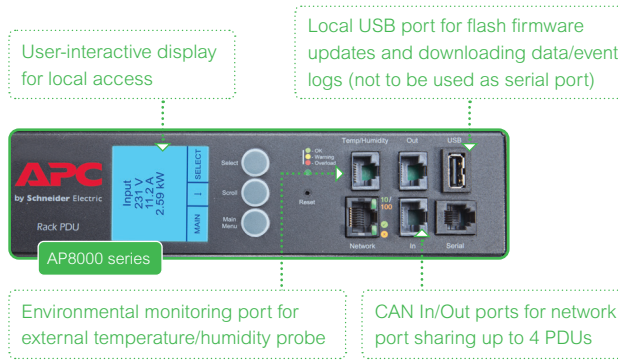
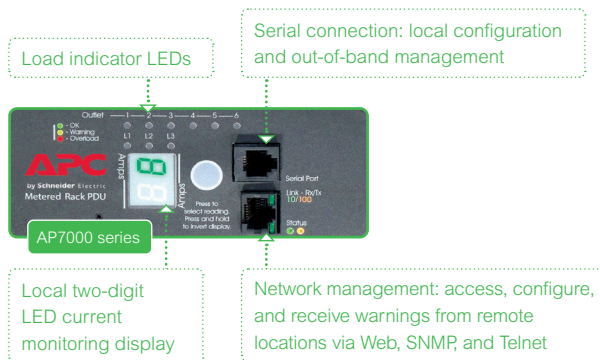
NetShelter Rack PDUs

NetShelter standard PDUs with industry-leading reliability, manageability, and security.

Ideal for small and medium sized businesses, small-to-medium data centers, and edge computing. Choose from metered, switched, metered-by-outlet, and metered-by-outlet with switching.



Standard Rack PDU Local Display



What is metered on Metered and Switched Rack PDUs?

What	Power quality metric	Why
Device	Power and energy	Rack level capacity change, planning, and efficiency calculations
Phase	Current*, power, and voltage	Balance loads between phases to protect against tripping upstream branch circuit breakers
Internal circuit breaker (bank)	Current*	Protect against tripping internal circuit breakers
Outlet	Current, power, energy (AP8600 and AP8400 Series only)	Detailed capacity change, equipment efficiency, and trends

*AP7000 series monitors current per phase and breaker only.

[See available models →](#)

Custom NetShelter Rack PDUs

Pre-configured or custom NetShelter Rack PDU designs are available to suit unique project and end-user requirements.

Customizable options include:

- Cord length
- Outlet quantity or layout
- PDU color
- Outlet color

For requests and more details, email

customracks@se.com.

[Rack PDU Series Comparison](#)

[Rack Series Comparison](#)

[Rack PDU Series](#)

Advanced

AP

Premium

PR

Essential

EP

Security & Control

SC

[Rack Series](#)

Premium

SX

Essential

SV

Soundproof

SP

Wall-mount

WX

2-Post & 4-Post

OF

Seismic, Colo & AV

CM

Custom & Configured

CC

Rugged

RX

Shock Packaging & Pallet

SH

[Accessories & Upgrades](#)

Airflow & Cabling

AC

Security & Access

SA

[Index](#)

Product Index

PX



Easy Rack PDUs

Available globally excluding US & Canada

An easy-to-install, easy-to-use, easy-to-customize rackmount PDU that provides reliable power distribution to the equipment in the rack and with the functionality of monitoring and control.

Perfect for small and medium data centers and computer rooms, as well as colocation and large enterprise data centers.

	NetShelter Rack PDUs	Easy Rack PDUs
Maximum outlet counts	48	24
Maximum operating temperature	60°C / 140°F	50°C / 122°F
Ultra-low profile circuit breakers	Yes	No
Locking IEC outlets when used with locking power cords	Yes	No
Safety certifications	UL / IEC	IEC
Warranty	2-3 years	1-2 years
Regional availability	Global	Global (excluding US and Canada)



Rack PDU Series Comparison

Rack Series Comparison

..... Rack PDU Series

Advanced

AP

Premium

PR

Essential

EP

Security & Control

SC

..... Rack Series

Premium

SX

Essential

SV

Soundproof

SP

Wall-mount

WX

2-Post & 4-Post

OF

Seismic, Colo & AV

CM

Custom & Configured

CC

Rugged

RX

Shock Packaging & Pallet

SH

..... Accessories & Upgrades

Airflow & Cabling

AC

Security & Access

SA

..... Index

Product Index

PX



Custom Easy Rack PDUs

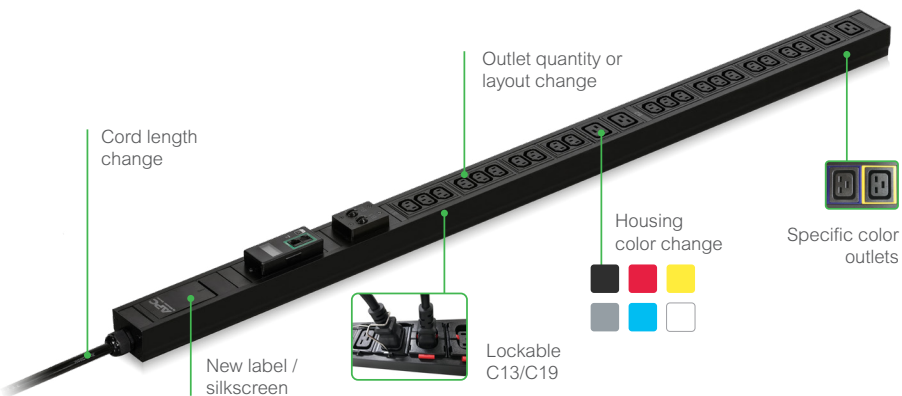
Pre-configured or custom Easy Rack PDU designs are available to suit unique project and end-user requirements.

Customizable options include:

- Cord length
- Outlet quantity or layout
- PDU color
- Outlet color

For requests and more details, email

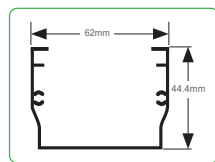
customeasyracks@se.com.



Hydraulic-magnetic circuit breaker



Schuko type socket



Chassis cross-section

See available models →

NetShelter Rack Automatic Transfer Switches (ATS)

Fifth-Generation AP44xxASeries ATS

Intelligent and cyber-secure for seamless power switching

APC NetShelter Rack ATS provides redundant power to single-corded equipment loads in the IT rack. These high-availability switches are cyber-secure and offer greater control of your IT equipment from cloud to edge.



Reliability

- **Switching time <10ms**
- **Field replaceable network management card (NMC)** to minimize downtime disruption in the event of a failure
- **Temperature/humidity sensor support** for environmental monitoring in your data center or network closet
- **Dual input power cords** for seamless power switching
- **2 years standard warranty, 5 years extended warranty**



Agility

- **32 rack ATS network port sharing** to manage from one IP address to simplify and speed deployment while saving the cost
- **Flash upgradable** to enable future product enhancement via network firmware upgrade
- **Wi-fi support via APC USB device** for cable-less installation and setup



Manageability

- **Gigabit Ethernet support** for future-proofed faster communication up to 1 Gbps over network; this built-in network connectivity allows remote management via Web UI, CLI, SNMP, or EcoStruxure Data Center Expert
- **Color LCD display** for ease of access
- **LCES1 mini NMC3 network management card** for enhanced security, remote monitoring, and control of individual rack ATS by connecting it directly to network
- **EcoStruxure IT ready** for seamless integration including alarm notification alerts and control of critical IT infrastructure from anywhere in the event of an issue

Nominal voltage	Mounting U-space	Input circuit	Primary region	APC SKU
100	1U	15 A	Japan	AP4450AJ
100	1U	20 A	Japan	AP4452AJ
100/120	1U	15 A	NAM, LAM, Japan	AP4450A
120	1U	20 A	NAM, LAM	AP4452A
120	2U	30A	NAM, LAM	AP4453A
200/208	1U	20 A	NAM, LAM, Japan	AP4430A
200/208	2U	30 A	NAM, LAM, Japan	AP4432A
208	1U	12 A	NAM, LAM	AP4433A
208	1U	20 A	NAM, LAM	AP4434A
208	2U	30 A	NAM, LAM	AP4431A
230	1U	10 A	EMEA, EAP, China, India	AP4421A
230	1U	16 A		AP4422A
230	1U	16 A		AP4423A
230	2U	32 A		AP4424A

Rack PDU Series Comparison

Rack Series Comparison

..... Rack PDU Series

Advanced

AP

Premium

PR

Essential

EP

Security & Control

SC

..... Rack Series

Premium

SX

Essential

SV

Soundproof

SP

Wall-mount

WX

2-Post & 4-Post

OF

Seismic, Colo & AV

CM

Custom & Configured

CC

Rugged

RX

Shock Packaging & Pallet

SH

..... Accessories & Upgrades

Airflow & Cabling

AC

Security & Access

SA

..... Index

Product Index

PX



Securely monitor, manage & control

Don't compromise security for connectivity

Remote visibility requires connecting power and cooling devices to the network, opening potential avenues for attack. Staying ahead of these highly sophisticated threats requires cutting-edge cybersecurity measures and continuous action from both vendors and those responsible for IT infrastructure.

NMC3-enabled PDUs

APC NetShelter and Easy Rack PDUs that are embedded with our Network Management Cards (NMC3 or later) and use our Secure NMC System have enhanced cybersecurity capabilities. This NMC platform is independently certified to the IEC 62443-4-2 SL2 standard.

To ensure your Network Management Card has the latest firmware, your NMC3 includes a 1-year Secure NMC subscription.

Enhanced cybersecurity



Secure NMC3 System

- NMC3 platform is third-party certified by one of the world's leading testing service providers (IEC 62443-4-2)
- 1-year free subscription with Rack PDU Advanced purchase

NMC3-enabled Rack PDUs are compatible with EcoStruxure IT, so you can:

- Monitor sensors and alarms
- Manage mass firmware upgrades, configuration or outlet control
- Connect remotely

EcoStruxure™
Innovation At Every Level

Rack PDU Series Comparison

Rack Series Comparison

..... Rack PDU Series

Advanced

AP

Premium

PR

Essential

EP

Security & Control

SC

..... Rack Series

Premium

SX

Essential

SV

Soundproof

SP

Wall-mount

WX

2-Post & 4-Post

OF

Seismic, Colo & AV

CM

Custom & Configured

CC

Rugged

RX

Shock Packaging & Pallet

SH

..... Accessories & Upgrades

Airflow & Cabling

AC

Security & Access

SA

..... Index

Product Index

PX



Securely monitor, manage & control

Remote monitoring and control through EcoStruxure IT



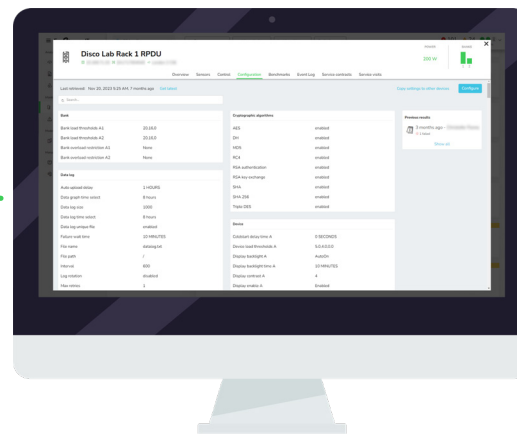
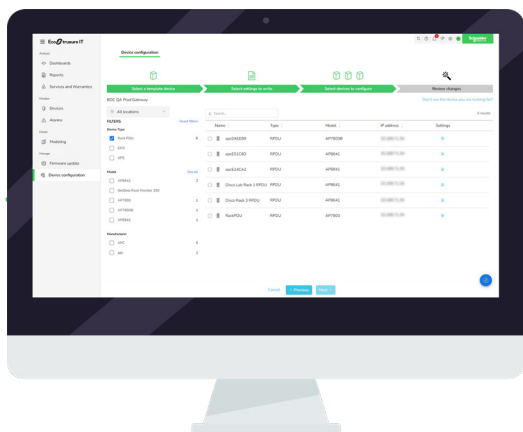
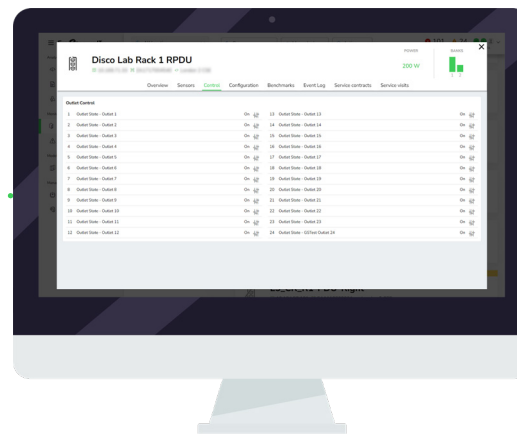
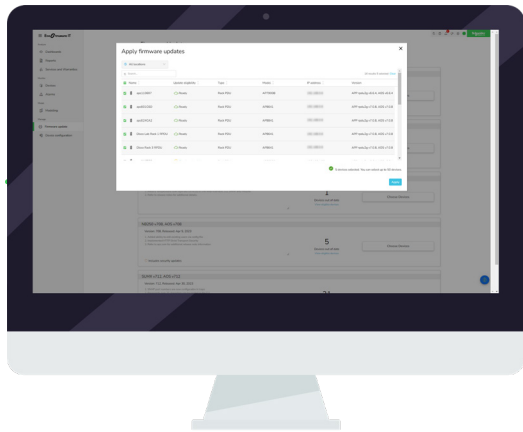
Monitor sensors and alarms



Remote connectivity



Manage mass firmware upgrades, configuration, or outlet control



Rack PDU Series Comparison

Rack Series Comparison

..... Rack PDU Series

Advanced

AP

Premium

PR

Essential

EP

Security & Control

SC

..... Rack Series

Premium

SX

Essential

SV

Soundproof

SP

Wall-mount

WX

2-Post & 4-Post

OF

Seismic, Colo & AV

CM

Custom & Configured

CC

Rugged

RX

Shock Packaging & Pallet

SH

..... Accessories & Upgrades

Airflow & Cabling

AC

Security & Access

SA

..... Index

Product Index

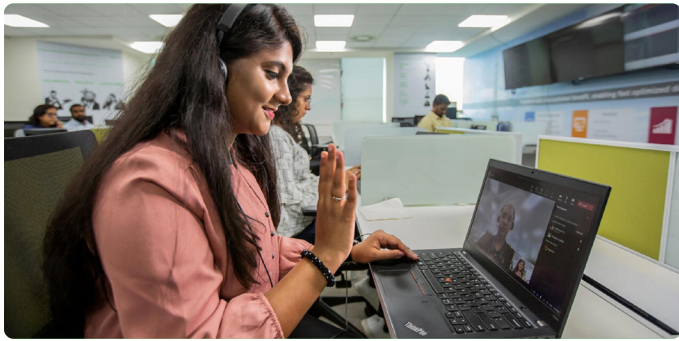
PX

EcoStruxure™
Innovation At Every Level



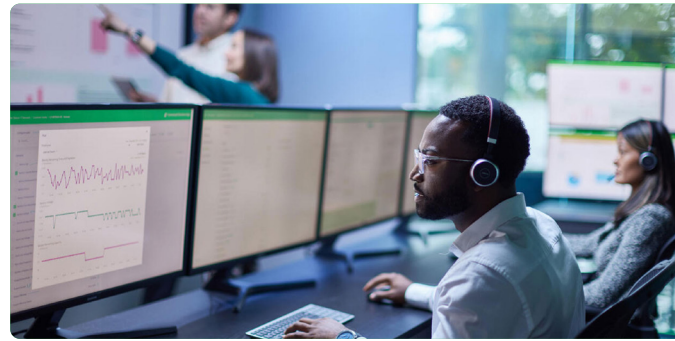
EcoCare: Membership-based service plans

EcoCare, a membership-based service plan, helps you identify issues before they become a problem. Keep operations running at peak performance with 24/7 proactive monitoring and alarming, asset management for increased equipment uptime, and expert priority support (both onsite and remote) for fast response.



Fast, priority, emergency support: Get time back

Enjoy priority support and direct access to service experts (onsite and remote), led by your go-to coach and customer success management team.



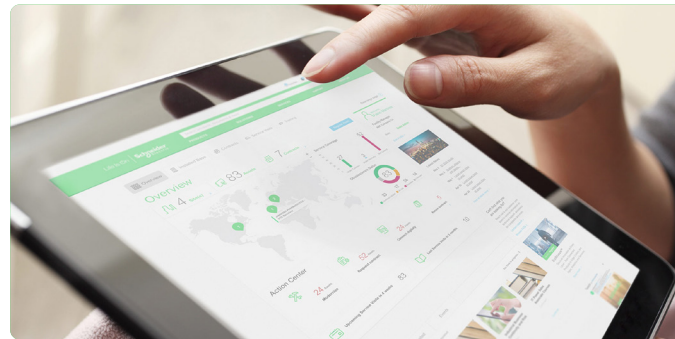
24/7 remote monitoring: Stay ahead of any problems

Easily identify issues before they become a problem. Proactive monitoring and alarming by our experts helps you reduce downtime.



Discounts on spare parts: Make your budget last

Get exclusive discounts and preferred rates on spare parts. See special pricing and more using the mobile app.



Easy-to-use app: Your data in one place

Once your account is set up in mySchneider—reports, analytics data, schedules, and more are at your fingertips using the app.

Rack PDU Series Comparison

Rack Series Comparison

..... Rack PDU Series

Advanced

AP

Premium

PR

Essential

EP

Security & Control

SC

..... Rack Series

Premium

SX

Essential

SV

Soundproof

SP

Wall-mount

WX

2-Post & 4-Post

OF

Seismic, Colo & AV

CM

Custom & Configured

CC

Rugged

RX

Shock Packaging & Pallet

SH

..... Accessories & Upgrades

Airflow & Cabling

AC

Security & Access

SA

..... Index

Product Index

PX



NetShelter SX Enclosures

The IT and AI racks you can feel certain about

Get ready for AI, and bring your business the power of global scale, sustainable leadership and unparalleled quality.



SX for AI

- Stronger, larger models
- Plenty of room for cooling, power distribution, and cabling



More computing in less space

- Quality built IT racks made for AI applications and everyday excellence
- Outstanding load capacity, airflow and security



Peace of mind

- Built with all-steel construction
- Secured with 3-point locking system
- Backed by 5-year warranty



Simplified daily workflows

- Makes daily operations more efficient, predictable and enjoyable
- Packed with features that make installation faster, easier and precise
- Ample space for equipment, organization and maintenance



	NetShelter SX Shock Package (original)	NetShelter SX (latest generation)	NetShelter SX (original)
Static load	3750 lb. / 1705 kg*	4000 lb. / 1814 kg* <small>NEW</small>	3750 lb. / 1705 kg*
Dynamic load	2250 lb. / 1020 kg*	2250 lb. / 1020 kg* <small>NEW</small>	2250 lb. / 1020 kg*
Shipping load	2000 lb. / 907 kg	–	–
Shock packaging	✓	–	–
Equipment mounting rails	19" EIA, adjust in .25 in. (6 mm) increments	19" EIA, adjust in .25 in. (6 mm) increments	19" EIA, adjust in .25 in. (6 mm) increments
Door perforation	69%	80%	69%
Front door swing	130°, reversible, curved front	270°(180 bayed), reversible, curved front	130°, reversible, curved front
Rear door swing	130°, flat front	270°, flat front	130°, flat front
Side panels	Split, lockable	Split, lockable	Split, lockable
Baying kit	Included	Included	Included
Roof	5 large cable entry points (3 front, 2 rear)	5 large cable entry points (3 front, 2 rear)	5 large cable entry points (3 front, 2 rear)
Bottom plate	Optional	Optional	Optional
Locking	Single-point locking	3-point locking	Single-point locking
Casters & leveling feet	Included	Included	Included
Rear accessory	Full-height 0U accessory channels*	Full-height 0U accessory channels*	Full-height 0U accessory channels*
Door handles**	Key locking**	Key locking**	Key locking**
Toolless features	Doors, roof, roof cable trough (optional)	Doors, roof, roof cable trough (optional)	Doors, roof, roof cable trough (optional)
Certifications	UL, ISTA, RoHS, REACH	UL, ISTA, RoHS, REACH	UL, ISTA, RoHS, REACH
Warranty	5 years	5 years	5 years

*See SKUs for exact model specification. **Options for combination lock, keycard access, and unique key cylinders available.

Rack PDU Series Comparison

Rack Series Comparison

..... Rack PDU Series

Advanced

AP

Premium

PR

Essential

EP

Security & Control

SC

..... Rack Series

Premium

SX

Essential

SV

Soundproof

SP

Wall-mount

WX

2-Post & 4-Post

OF

Seismic, Colo & AV

CM

Custom & Configured

CC

Rugged

RX

Shock Packaging & Pallet

SH

..... Accessories & Upgrades

Airflow & Cabling

AC

Security & Access

SA

..... Index

Product Index

PX



NetShelter SX Enclosures selection

	Model (Black)	Available in*		Model (White)	Available in*		Rack Units	Dimensions (mm)			Max Equipment Depth (mm)	Static (lb.)	Dynamic (lb.)	Shipping (lb.)	OU Accessory Channels	Doors & Sides	
		NAM	EUR		NAM	EUR		H	W	D							
NetShelter SX (latest generation)	Server Racks	AR3100B2	NAM	EUR	AR3100W2	NAM	EUR	42	1991	600	1070	915	4000	2250	-	2	✓
		AR3150B2	NAM	EUR	AR3150W2	NAM	EUR	42	1991	750	1070	915	4000	2250	-	2	✓
		AR3300B2	NAM	EUR	AR3300W2	NAM	EUR	42	1991	600	1200	1048	4000	2250	-	4	✓
		AR3350B2	NAM	EUR	AR3350W2	NAM	EUR	42	1991	750	1200	1048	4000	2250	-	4	✓
		AR3180B2	NAM	EUR	-	-	EUR	42	1991	800	1070	915	4000	2250	-	2	✓
		AR3380B2	NAM	EUR	AR3380W2	-	EUR	42	1991	800	1200	1048	4000	2250	-	4	✓
		AR3105B2	NAM	EUR	AR3105W2	NAM	EUR	45	2124	600	1070	915	4000	2250	-	2	✓
		AR3155B2	NAM	EUR	AR3155W2	NAM	EUR	45	2124	750	1070	915	4000	2250	-	2	✓
		AR3305B2	NAM	EUR	AR3305W2	NAM	EUR	45	2124	600	1200	1048	4000	2250	-	4	✓
		AR3355B2	NAM	EUR	AR3355W2	NAM	EUR	45	2124	750	1200	1048	4000	2250	-	4	✓
		AR3107B2	NAM	EUR	-	-	EUR	48	2258	600	1070	915	4000	2250	-	2	✓
		AR3157B2	NAM	EUR	-	-	EUR	48	2258	750	1070	915	4000	2250	-	2	✓
		AR3307B2	NAM	EUR	AR3307W2	NAM	EUR	48	2258	600	1200	1048	4000	2250	-	4	✓
		AR3357B2	NAM	EUR	AR3357W2	NAM	EUR	48	2258	750	1200	1048	4000	2250	-	4	✓
		AR3387B2	NAM	EUR	AR3387W2	-	EUR	48	2258	800	1200	1048	4000	2250	-	4	✓
		AR3187B2	NAM	EUR	-	-	EUR	48	2258	800	1070	915	4000	2250	-	2	✓
		AR3308B2	NAM	EUR	AR3308W2	NAM	EUR	52	2436	600	1200	1048	4000	2250	-	2	✓
	AR3358B2	NAM	EUR	AR3358W2	-	EUR	52	2436	750	1200	1048	4000	2250	-	2	✓	
	AR3388B2	NAM	EUR	AR3388W2	-	EUR	52	2436	800	1200	1048	4000	2250	-	4	✓	
	Networking	AR3140B2	NAM	EUR	-	-	EUR	42	1991	750	1070	915	4000	2250	-	2	✓
AR3340B2		NAM	EUR	AR3340W2	NAM	EUR	42	1991	750	1200	1048	4000	2250	-	4	✓	
AR3347B2		NAM	EUR	-	-	EUR	48	2258	750	1200	1048	4000	2250	-	4	✓	
Colo	AR3200B2	NAM	EUR	-	-	EUR	20 (x2)	1991	600	1070	915	4000	2250	-	0	✓	
NetShelter SX (original)	Server Racks	AR3003	WW	-	-	EUR	12	658	600	889	756	600	600	-	2	✓	
		AR3103	WW	-	-	EUR	12	658	600	1070	921	600	600	-	2	✓	
		AR3006	WW	-	-	EUR	18	925	600	889	756	900	900	-	2	✓	
		AR3106	WW	-	-	EUR	18	925	600	1070	921	900	900	-	2	✓	
		AR3104	WW	-	-	EUR	24	1198	600	1070	915	3000	2250	-	2	✓	
		AR3100TAA**	NAM	-	-	EUR	42	1991	600	1070	915	3750	2250	-	2	✓	
		AR3105TAA**	NAM	-	-	EUR	45	2124	600	1070	915	3750	2250	-	2	✓	
		-	-	-	AR3107W	WW	EUR	48	2258	600	1070	915	3750	2250	-	2	✓
		AR3107TAA**	NAM	-	-	EUR	48	2258	600	1070	915	3750	2250	-	2	✓	
		-	-	-	AR3157W	WW	EUR	48	2258	750	1070	915	3750	2250	-	2	✓
		AR3158	WW	-	-	EUR	52	2436	750	1070	915	3750	2250	-	2	✓	
		Shock Packaged	AR3100SP	WW	-	-	EUR	42	1991	600	1070	915	3750	2250	2000	2	✓
			AR3150SP	WW	-	-	EUR	42	1991	750	1070	915	3750	2250	2000	2	✓
	AR3300SP		WW	-	AR3300WSP	WW	EUR	42	1991	600	1200	1048	3750	2250	2000	4	✓
	AR3350SP		WW	-	AR3350WSPX832	WW	EUR	42	1991	750	1200	1048	3750	2250	2000	4	✓
	AR3105SP		WW	-	-	EUR	45	2124	600	1070	915	3750	2250	2000	2	✓	
	AR3155SP		WW	-	-	EUR	45	2124	750	1070	915	3750	2250	2000	2	✓	
	AR3305SP		WW	-	-	EUR	45	2124	600	1200	1048	3750	2250	2000	4	✓	
	AR3355SP		WW	-	-	EUR	45	2124	750	1200	1048	3750	2250	2000	4	✓	
	AR3107SP		WW	-	-	EUR	48	2258	600	1070	915	3750	2250	2000	2	✓	
AR3157SP	WW		-	AR3157WSP	WW	EUR	48	2258	750	1070	915	3750	2250	2000	2	✓	
AR3307SP	WW		-	AR3307WSP	WW	EUR	48	2258	600	1200	1048	3750	2250	2000	4	✓	
AR3357SP	WW		-	-	EUR	48	2258	750	1200	1048	3750	2250	2000	4	✓		

Regional availability key: **NAM** = North America; **EUR** = Europe; **WW** = Worldwide

*Commercial Reference (CR) availability is generalized and may not cover all countries. Please check our website to confirm specific CR availability in your country.

**TAA compliant model. All NetShelter products listed are UL, ISTA, RoHS, and REACH certified.

Rack PDU Series Comparison

Rack Series Comparison

..... Rack PDU Series

Advanced

AP

Premium

PR

Essential

EP

Security & Control

SC

..... Rack Series

Premium

SX

Essential

SV

Soundproof

SP

Wall-mount

WX

2-Post & 4-Post

OF

Seismic, Colo & AV

CM

Custom & Configured

CC

Rugged

RX

Shock Packaging & Pallet

SH

..... Accessories & Upgrades

Airflow & Cabling

AC

Security & Access

SA

..... Index

Product Index

PX



NetShelter SX Enclosures selection

NetShelter SX Enclosures (Configured—Doors and Side Panels)

Model	Rack Units	Height (mm)	Width (mm)	Depth (mm)	Max Equipment Depth (mm)	Static Load (kg / lb.)	Dynamic Load (kg / lb.)	Doors	Sides
AR3100B2X609	42	1991	600	1070	915	1814 / 4000	1021 / 2250	✓	✗
AR3100B2X610	42	1991	600	1070	915	1814 / 4000	1021 / 2250	✗	✓
AR3100B2X617	42	1991	600	1070	915	1814 / 4000	1021 / 2250	✗	✗
AR3150B2X609	42	1991	750	1070	915	1814 / 4000	1021 / 2250	✓	✗
AR3150B2X610	42	1991	750	1070	915	1814 / 4000	1021 / 2250	✗	✓
AR3150B2X617	42	1991	750	1070	915	1814 / 4000	1021 / 2250	✗	✗
AR3300B2X609	42	1991	600	1200	1048	1814 / 4000	1021 / 2250	✓	✗
AR3300B2X610	42	1991	600	1200	1048	1814 / 4000	1021 / 2250	✗	✓
AR3300B2X617	42	1991	600	1200	1048	1814 / 4000	1021 / 2250	✗	✗
AR3350B2X609	42	1991	750	1200	1048	1814 / 4000	1021 / 2250	✓	✗
AR3350B2X610	42	1991	750	1200	1048	1814 / 4000	1021 / 2250	✗	✓
AR3350B2X617	42	1991	750	1200	1048	1814 / 4000	1021 / 2250	✗	✗
AR3107B2X609	48	2258	600	1070	915	1814 / 4000	1021 / 2250	✓	✗
AR3107B2X610	48	2258	600	1070	915	1814 / 4000	1021 / 2250	✗	✓
AR3107B2X617	48	2258	600	1070	915	1814 / 4000	1021 / 2250	✗	✗
AR3157B2X609	48	2258	750	1070	915	1814 / 4000	1021 / 2250	✓	✗
AR3157B2X610	48	2258	750	1070	915	1814 / 4000	1021 / 2250	✗	✓
AR3157B2X617	48	2258	750	1070	915	1814 / 4000	1021 / 2250	✗	✗
AR3307B2X609	48	2258	600	1200	1048	1814 / 4000	1021 / 2250	✓	✗
AR3307B2X610	48	2258	600	1200	1048	1814 / 4000	1021 / 2250	✗	✓
AR3307B2X617	48	2258	600	1200	1048	1814 / 4000	1021 / 2250	✗	✗
AR3357B2X609	48	2258	750	1200	1048	1814 / 4000	1021 / 2250	✓	✗
AR3357B2X610	48	2258	750	1200	1048	1814 / 4000	1021 / 2250	✗	✓
AR3357B2X617	48	2258	750	1200	1048	1814 / 4000	1021 / 2250	✗	✗

Rack PDU Series Comparison

Rack Series Comparison

..... Rack PDU Series

Advanced

AP

Premium

PR

Essential

EP

Security & Control

SC

..... Rack Series

Premium

SX

Essential

SV

Soundproof

SP

Wall-mount

WX

2-Post & 4-Post

OF

Seismic, Colo & AV

CM

Custom & Configured

CC

Rugged

RX

Shock Packaging & Pallet

SH

..... Accessories & Upgrades

Airflow & Cabling

AC

Security & Access

SA

..... Index

Product Index

PX

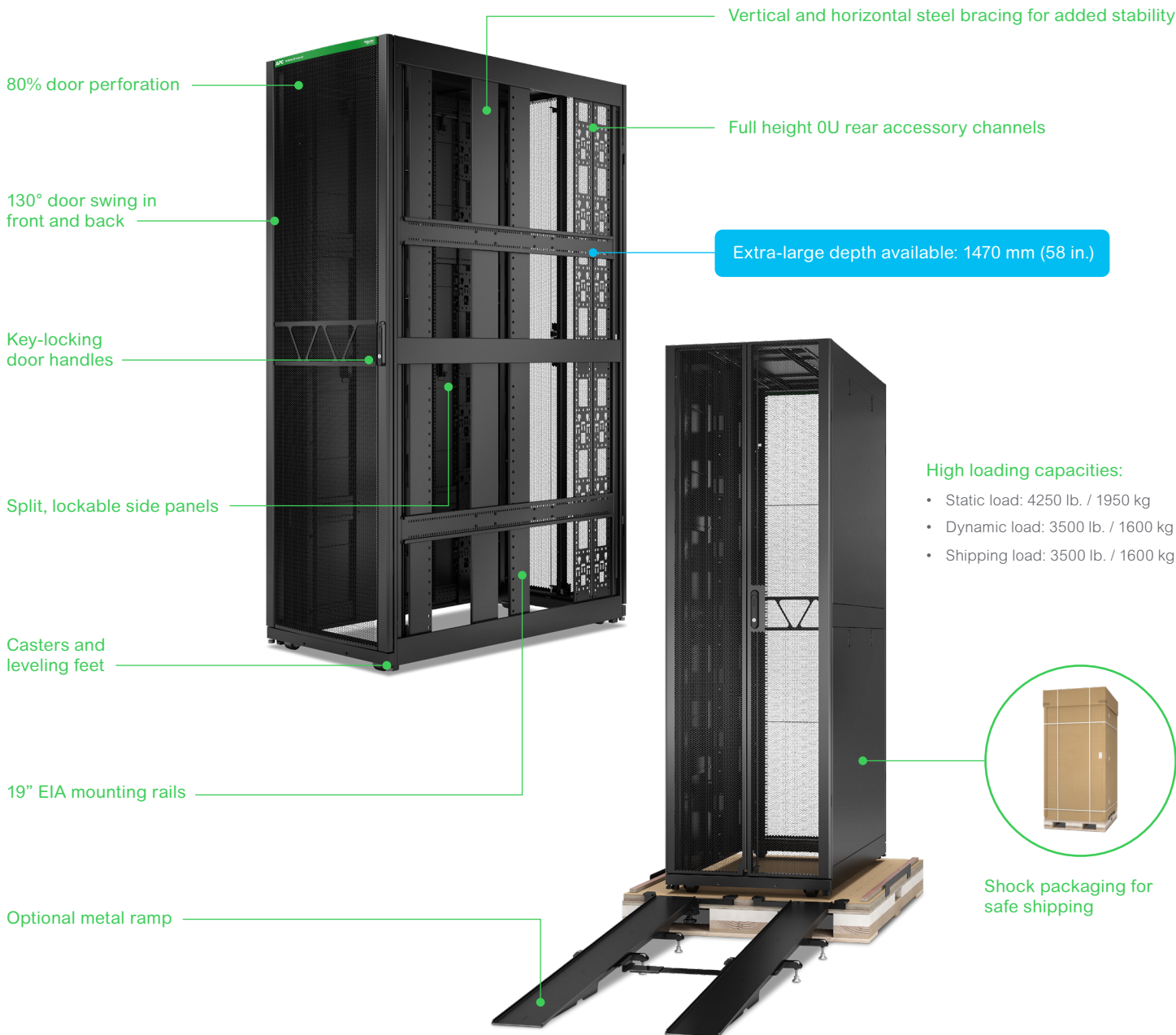


NetShelter SX Advanced Enclosures

Get ready for AI workloads with even higher density racks

Taller, deeper, stronger racks designed for AI workloads and ready for rack, stack, and ship. NetShelter SX Advanced offers:

- **Uncompromised shipping protection** designed to safely load, transport, unload, and deploy a rack with IT equipment pre-installed
- **Maximized space** to build high-density AI infrastructure, accommodating large-depth servers and seamless integration of liquid cooling components
- **Higher weight loading capacity** to fit more equipment in each rack for a smaller IT footprint, reducing data center costs



Rack PDU Series Comparison

Rack Series Comparison

..... Rack PDU Series

Advanced

AP

Premium

PR

Essential

EP

Security & Control

SC

..... Rack Series

Premium

SX

Essential

SV

Soundproof

SP

Wall-mount

WX

2-Post & 4-Post

OF

Seismic, Colo & AV

CM

Custom & Configured

CC

Rugged

RX

Shock Packaging & Pallet

SH

..... Accessories & Upgrades

Airflow & Cabling

AC

Security & Access

SA

..... Index

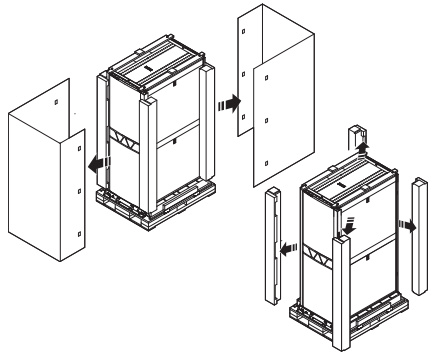
Product Index

PX

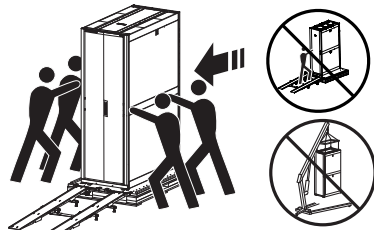


Hassle-free onsite deployment:

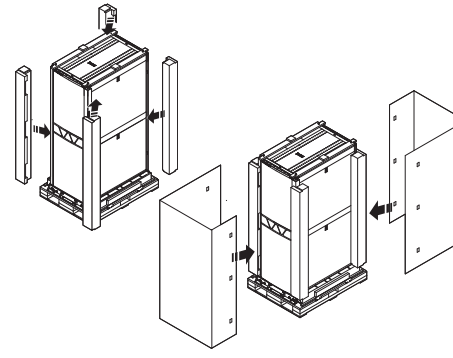
Safely load, transport, unload, and deploy a rack with up to 3500 lbs. (1600 kg) of IT equipment installed.



Remove outer wrap layers



Install and test IT equipment



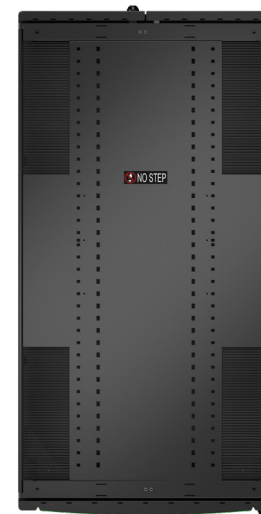
Reapply protective packaging

NetShelter SX Advanced technical specifications

NetShelter SX Advanced	
Static load	4250 lb. / 1950 kg NEW
Dynamic load	3500 lb. / 1600 kg NEW
Shipping load	3500 lb. / 1600 kg NEW
Shock packaging	✓ NEW
Equipment mounting rails	19" EIA, adjust in .5 in. (12.7 mm) increments
Door perforation	80%
Front door swing	130°, reversible, curved front
Rear door swing	130°, flat front
Side panels	Split, lockable
Baying kit	Included
Roof	4 extra large cable entry points
Bottom plate	Optional
Locking	3-point locking
Casters & leveling feet	Included
Rear accessory	Full-height 0U accessory channels*
Door handles**	Key locking**
Toolless features	Doors, roof, roof cable trough (optional)
Certifications	UL, ISTA, RoHS, REACH
Warranty	5 years



Top view:
4 extra-large cable entry points.



*See SKUs for exact model specification. **Options for combination lock, keycard access, and unique key cylinders available.

	Model (Black)	Available in*	Rack Units	Dimensions (mm)			Max Equipment Depth (mm)	Static (lb.)	Dynamic (lb.)	Shipping (lb.)	0U Accessory Channels	Doors & Sides
				H	W	D						
NetShelter SX Advanced High Strength & Shock Packaged	AR9557SPB2	WW	48	2258	750	1295	1143	4250	3500	3500	4	✓
	AR9587SPB2	WW	48	2258	800	1295	1143	4250	3500	3500	4	✓
	AR9657SPB2	WW	48	2258	750	1470	1318	4250	3500	3500	4	✓
	AR9558SPB2	NAM EUR	52	2436	750	1295	1143	4250	3500	3500	4	✓
	AR9588SPB2	NAM EUR	52	2436	800	1295	1143	4250	3500	3500	4	✓
	AR9658SPB2	NAM EUR	52	2436	750	1470	1318	4250	3500	3500	4	✓
	AR9000RAMPX886	WW										

Metal ramp, reusable 30 times, order as accessory

Regional availability key: **NAM** = North America; **EUR** = Europe; **WW** = Worldwide

*Commercial Reference (CR) availability is generalized and may not cover all countries. Please check our website to confirm specific CR availability in your country.

Rack PDU Series Comparison

Rack Series Comparison

..... Rack PDU Series

Advanced

AP

Premium

PR

Essential

EP

Security & Control

SC

..... Rack Series

Premium

SX

Essential

SV

Soundproof

SP

Wall-mount

WX

2-Post & 4-Post

OF

Seismic, Colo & AV

CM

Custom & Configured

CC

Rugged

RX

Shock Packaging & Pallet

SH

..... Accessories & Upgrades

Airflow & Cabling

AC

Security & Access

SA

..... Index

Product Index

PX



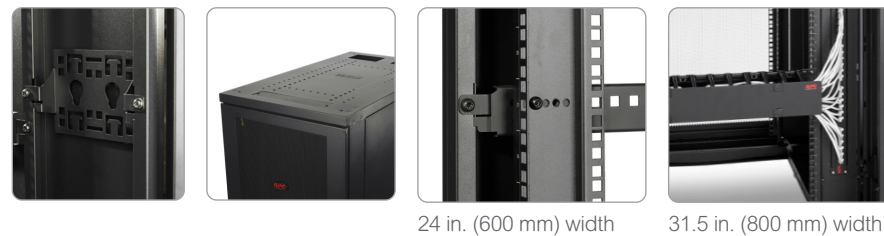
NetShelter SV Enclosures

Universal IT racks for low and medium density servers, the SV line facilitates faster installation and deployment with essential standard features.



- 1 Cable access through roof and rack bottom
- 2 Adjustable vertical mounting rails with vertical 1U patching (31.5 in. [800 mm] only)
- 3 Lockable doors and side panels

Rear accessory mounting brackets for easy integration of rack PDU and cable managers



24 in. (600 mm) width 31.5 in. (800 mm) width

NetShelter SX vs. NetShelter SV Enclosures

	NetShelter SX	NetShelter SV
Rack units	12–52U	42–48U
Load rating	4000 lb.	2205 lb.
Side panels	Split half-height	Single full height
Roof	Toolless removal, brushes	Not removable, multiple cable entry points, brushes on 800 mm models only
Toolless features	✓	✗
Cable management	Full height accessory channels	4 accessory brackets
Rail adjustability	Fully adjustable	Fixed adjustment points
Eyebolt support	✓	✗
Casters	Low profile	4 Normal profile
Design tools available	LEC, Row-designer, InfraStruXure designer	LEC

NetShelter SV Enclosures

Model (assembled)	Model (unassembled)	Rack Units	Height (mm)	Width (mm)	Depth (mm)	Max Equipment Depth (mm)	Static Load (kg / lb.)	Dynamic Load (kg / lb.)	Doors	Sides
AR2400	AR2400FP1	42	2057	600	1070	777	1000 / 2205	460 / 1014	✓	✓
AR2401	–	42	2057	600	1070	777	1000 / 2205	460 / 1014	✓	✗
AR2480	–	42	2057	800	1070	777	1000 / 2205	460 / 1014	✓	✓
AR2500	–	42	2057	600	1200	917	1000 / 2205	460 / 1014	✓	✓
AR2580	–	42	2057	800	1200	917	1000 / 2205	460 / 1014	✓	✓
AR2407	–	48	2324	600	1070	777	1000 / 2205	460 / 1014	✓	✓
AR2487	–	48	2324	800	1070	777	1000 / 2205	460 / 1014	✓	✓
AR2507	–	48	2324	600	1200	917	1000 / 2205	460 / 1014	✓	✓
AR2587	–	48	2324	800	1200	917	1000 / 2205	460 / 1014	✓	✓

Rack PDU Series Comparison

Rack Series Comparison

..... Rack PDU Series

Advanced

AP

Premium

PR

Essential

EP

Security & Control

SC

..... Rack Series

Premium

SX

Essential

SV

Soundproof

SP

Wall-mount

WX

2-Post & 4-Post

OF

Seismic, Colo & AV

CM

Custom & Configured

CC

Rugged

RX

Shock Packaging & Pallet

SH

..... Accessories & Upgrades

Airflow & Cabling

AC

Security & Access

SA

..... Index

Product Index

PX



APC Easy Racks

Easy Racks are an easy-to-use series of racks and accessories that reduce complexity in your IT infrastructure, so that you can be proactive and stay focused on what matters most. Deploy Easy Racks in data centers, IT closets and edge environments for reliable and scalable solutions on a trusted platform.

Half-height side panels

- Easy to use and handle
- Lockable top side panels
- Toolless installation



Multi-functional roof

- Roof openings with brush strips for managing cabling and proper airflow management
- Compatible with APC overhead cable management system of troughs and partitions

Rear accessory brackets

- 4 accessory brackets pre-installed to support toolless installation of full-cabinet-height vertical rack PDUs
- Add additional brackets to support toolless installation of half-height PDUs and cable managers or replace completely with accessory channels

Ventilated front/rear doors

- Single open-vented front door and split rear doors
- Up to 81% perforation
- Hexagonal pattern

Integrated electrical grounding

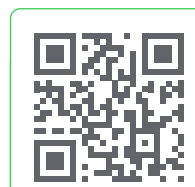
- Grounding connections on doors
- Roof, side panels and doors are grounded to the frame of the enclosure
- Additional external grounding locations in the front and rear



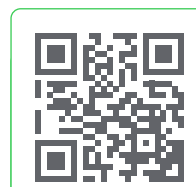
800 mm Racks Feature:

- Up to 16 x 1U vertical knockout panels located within the front and rear equipment mounting rails (12 in. 42U)
- Vertically mount patch panels or 1U devices and save horizontal mounting space for other IT devices
- Adds another 16U to an enclosure solution!

Take the 3D tour:



APC Easy Rack
42U Model



APC Easy Rack
24U Model

Rack PDU Series Comparison

Rack Series Comparison

..... Rack PDU Series

Advanced

AP

Premium

PR

Essential

EP

Security & Control

SC

..... Rack Series

Premium

SX

Essential

SV

Soundproof

SP

Wall-mount

WX

2-Post & 4-Post

OF

Seismic, Colo & AV

CM

Custom & Configured

CC

Rugged

RX

Shock Packaging & Pallet

SH

..... Accessories & Upgrades

Airflow & Cabling

AC

Security & Access

SA

..... Index

Product Index

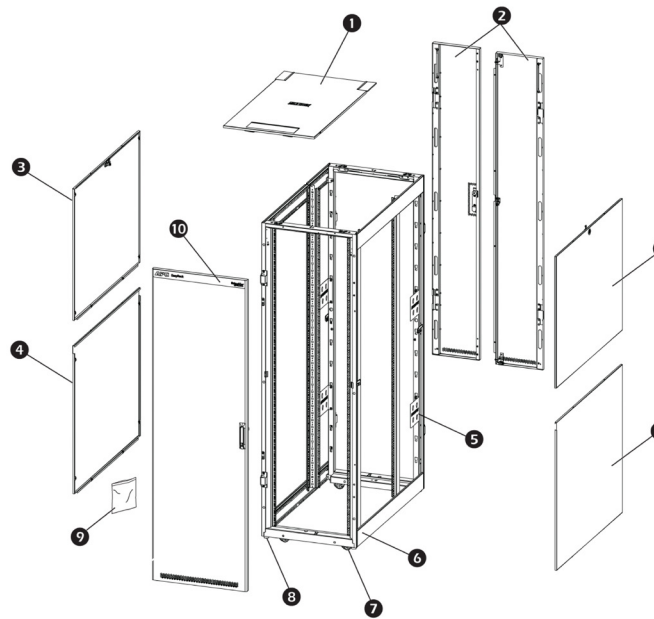
PX



APC Easy Rack selection

Rack Components

1. Roof
2. Rear doors
3. Removable top side panel (locking)
4. Removeable bottom side panel
5. Zero U accessory mounting brackets
6. Cabinet frame
7. Casters
8. Levelling feet
9. Removable and reversible front door
10. Hardware bag



APC Easy Racks

Model	Rack Units	Height (mm)	Width (mm)	Depth (mm)	Max Equipment Depth (mm)	Static Load (kg / lb.)	Dynamic Load (kg / lb.)	Doors	Sides
ER6482	24	1198	600	800	641	1197 / 2640	599 / 1320	✓	✓
ER6402	24	1198	600	1000	838	1197 / 2640	599 / 1320	✓	✓
ER6422	24	1198	600	1200	1041	1197 / 2640	599 / 1320	✓	✓
ER6282	42	1991	600	800	641	1197 / 2640	599 / 1320	✓	✓
ER8282	42	1991	800	800	641	1197 / 2640	599 / 1320	✓	✓
ER6202	42	1991	600	1000	838	1197 / 2640	599 / 1320	✓	✓
ER6202FP1*	42	1991	600	1000	838	1197 / 2640	599 / 1320	✓	✓
ER6200	42	1991	600	1000	838	1197 / 2640	599 / 1320	✓	✗
ER8202	42	1991	800	1000	838	1197 / 2640	599 / 1320	✓	✓
ER8200	42	1991	800	1000	838	1197 / 2640	599 / 1320	✓	✗
ER6212	42	1991	600	1100	940	1197 / 2640	599 / 1320	✓	✓
ER8212	42	1991	800	1100	940	1197 / 2640	599 / 1320	✓	✓
ER6222	42	1991	600	1200	1041	1197 / 2640	599 / 1320	✓	✓
ER6220	42	1991	600	1200	1041	1197 / 2640	599 / 1320	✓	✗
ER8222	42	1991	800	1200	1041	1197 / 2640	599 / 1320	✓	✓
ER8220	42	1991	800	1200	1041	1197 / 2640	599 / 1320	✓	✗
ER6802	48	2258	600	1000	838	1197 / 2640	599 / 1320	✓	✓
ER6800	48	2258	600	1000	838	1197 / 2640	599 / 1320	✓	✗
ER8802	48	2258	800	1000	838	1197 / 2640	599 / 1320	✓	✓
ER8800	48	2258	800	1000	838	1197 / 2640	599 / 1320	✓	✗
ER6812	48	2258	600	1100	940	1197 / 2640	599 / 1320	✓	✓
ER8812	48	2258	800	1100	940	1197 / 2640	599 / 1320	✓	✓
ER6822	48	2258	600	1200	1041	1197 / 2640	599 / 1320	✓	✓
ER6820	48	2258	600	1200	1041	1197 / 2640	599 / 1320	✓	✗
ER8822	48	2258	800	1200	1041	1197 / 2640	599 / 1320	✓	✓
ER8820	48	2258	800	1200	1041	1197 / 2640	599 / 1320	✓	✗

*Unassembled and flatpacked rack option and must be assembled onsite.

Rack PDU Series Comparison

Rack Series Comparison

..... Rack PDU Series

Advanced

AP

Premium

PR

Essential

EP

Security & Control

SC

..... Rack Series

Premium

SX

Essential

SV

Soundproof

SP

Wall-mount

WX

2-Post & 4-Post

OF

Seismic, Colo & AV

CM

Custom & Configured

CC

Rugged

RX

Shock Packaging & Pallet

SH

..... Accessories & Upgrades

Airflow & Cabling

AC

Security & Access

SA

..... Index

Product Index

PX



GO Rack

GO Racks are built with essential features and versatile ranges to meet the diverse demands of networking, AV and LAN/WAN applications.

Benefits:

- A variety of sizes to meet various needs
- Two pairs of easily adjustable mounting rails
- Conformity to IP20 rating
- Compatibility with a range of Schneider Electric and APC PDUs and accessories
- Static load capacity of 600 kg and dynamic load capacity of 360 kg (including the weight of the rack)



GO Rack with perforated door

This option helps enhance air circulation to prevent equipment from overheating.



GO Rack with glass door

This option provides a clear view of the equipment inside, allowing for easy access and maintenance (best for businesses with passive networking solutions that don't require frequent adjustment).

Model	Rack Units	Width (mm)	Depth (mm)
NR8282-P	42	800	800
NR6282-P	42	600	800
NR8202-P	42	800	1000
NR6202-P	42	600	1000
NR8682-P	36	800	800
NR6682-P	36	600	800
NR8602-P	36	800	1000
NR6602-P	36	600	1000
NR8482-P	24	800	800
NR6482-P	24	600	800
NR8402-P	24	800	1000
NR6402-P	24	600	1000
NR8882-P	18	800	800
NR6882-P	18	600	800
NR8802-P	18	800	1000
NR6802-P	18	600	1000

Model	Rack Units	Width (mm)	Depth (mm)
NR8282-G	42	800	800
NR6282-G	42	600	800
NR8202-G	42	800	1000
NR6202-G	42	600	1000
NR8682-G	36	800	800
NR6682-G	36	600	800
NR8602-G	36	800	1000
NR6602-G	36	600	1000
NR8482-G	24	800	800
NR6482-G	24	600	800
NR8402-G	24	800	1000
NR6402-G	24	600	1000
NR8882-G	18	800	800
NR6882-G	18	600	800
NR8802-G	18	800	1000
NR6802-G	18	600	1000

Rack PDU Series Comparison

Rack Series Comparison

..... Rack PDU Series

Advanced

AP

Premium

PR

Essential

EP

Security & Control

SC

..... Rack Series

Premium

SX

Essential

SV

Soundproof

SP

Wall-mount

WX

2-Post & 4-Post

OF

Seismic, Colo & AV

CM

Custom & Configured

CC

Rugged

RX

Shock Packaging & Pallet

SH

..... Accessories & Upgrades

Airflow & Cabling

AC

Security & Access

SA

..... Index

Product Index

PX



NetShelter Soundproof Racks

Discretely deploy IT gear, even in customer-facing areas

When there's no space, budget or time to build a traditional server closet, NetShelter Soundproof Racks offer a cost-effective alternative. Conveniently deploy servers and networking equipment in this quiet, all-in-one, elegant IT rack.

Soundproof Racks are ideal for bank branches, retail spaces, offices, healthcare facilities and classrooms.



Office and storefront friendly

- Elegant exterior blends in seamlessly
- Soundproofing reduces business disruption



Resilient and efficient

- Handles heavy edge servers with 2x heavier dynamic loads than previous model
- Locking front, rear and side prevent unwanted access
- Thermostat-controlled fans enable efficient and more effective cooling
- UL certified for safety



Simple to deploy

- All-in-one design: equipped with fans, integrated cable managers, basic PDU and access control...just add IT



- We used to have servers housed separately in a room with separate air conditioning. This occupies costly retail space [and] energy consumption due to air conditioning. That is the reason **we engaged with Schneider Electric** and our service partner.
- [The] integrated rack [EcoStruxure Micro Data Center with soundproof base enclosure] is **aesthetically beautiful**.
- I expect at least **10-15% energy savings** in the next two years.

— Palani Kumar, VP of Integrated Retail Service Group, Titan Company Ltd.



Rack PDU Series Comparison

Rack Series Comparison

..... Rack PDU Series

Advanced

AP

Premium

PR

Essential

EP

Security & Control

SC

..... Rack Series

Premium

SX

Essential

SV

Soundproof

SP

Wall-mount

WX

2-Post & 4-Post

OF

Seismic, Colo & AV

CM

Custom & Configured

CC

Rugged

RX

Shock Packaging & Pallet

SH

..... Accessories & Upgrades

Airflow & Cabling

AC

Security & Access

SA

..... Index

Product Index

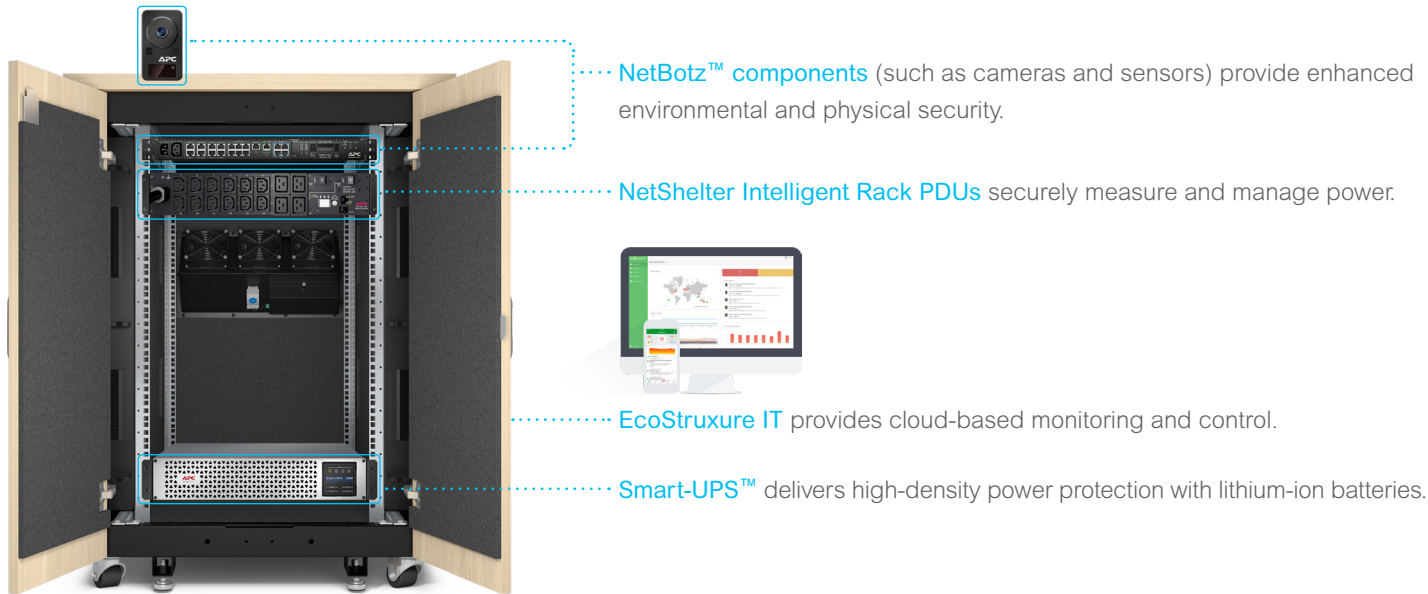
PX



NetShelter Soundproof Racks

Complete the solution

With the help of your preferred partner or Schneider Electric representative, you can design your own EcoStruxure Micro Data Center using a NetShelter Soundproof Rack. Partners can register and explore options in the Design Portal on se.com/MySchneider.



NetShelter Soundproof Racks

Model (110–120 V)	Model (220–240 V)	Rack Units	Height (mm)	Width (mm)	Depth (mm)	Max Equipment Depth (mm)	Static Load (kg / lb.)	Dynamic Load (kg / lb.)	Cooling Capacity (kW)	Sound Reduction (dBA @ 1m)
AR4012A*		12	783	750	1130	834	838 / 1848	748 / 1650	1.2	18.85
AR4017A	AR4017IA	17	1000	750	1130	834	838 / 1848	748 / 1650	1.2	18.85
AR4032A	AR4032IA	32	1666	750	1130	834	1497 / 3300	748 / 1650	2.4	18.85
AR4038LA	AR4038LIA	38	1863	750	1130	834	1497 / 3300	748 / 1650	3.6	18.85

All models are configured with locking front, rear and side panel, built-in PDU, cable manager with brush strips, casters and leveling feet and are UL certified with a 2 year warranty.

*Dual-rated 110-240 V

Rack PDU Series Comparison

Rack Series Comparison

..... Rack PDU Series

Advanced

AP

Premium

PR

Essential

EP

Security & Control

SC

..... Rack Series

Premium

SX

Essential

SV

Soundproof

SP

Wall-mount

WX

2-Post & 4-Post

OF

Seismic, Colo & AV

CM

Custom & Configured

CC

Rugged

RX

Shock Packaging & Pallet

SH

..... Accessories & Upgrades

Airflow & Cabling

AC

Security & Access

SA

..... Index

Product Index

PX

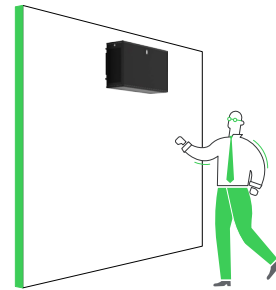


NetShelter Wall-mount Enclosures

NetShelter wall-mount server and network rack solutions provide the functionality, reliability and ease-of-deployment required in edge computing applications.

Benefits:

- Variety of height, weight and configuration options for any edge computing environment
- Compatible with a wide range of APC power, security and monitoring devices and services
- Static weight capacity of up to 350 lb.
- Ideal for rollouts in retail, healthcare, education or finance settings
- Ships fully assembled for quick deployment



Switch depth

Compact wall-mount enclosures designed for networking gear or other small devices with a minimal footprint. Choose from unassembled options in select sizes or assembled options compatible with NetBotz Rack Access for enhanced security and access control.

Max mounting depth: 329 mm



UPS depth

Seamlessly compatible with most APC single-phase UPS solutions, these enclosures are purpose-built for UPS solutions. Deploy a robust edge computing solution with confidence using this heavy-duty, side-mounted enclosure to conserve valuable space.

Max mounting depth: 835 mm



Server depth

Wall-mount enclosures tailored for servers and smaller single-phase UPS technologies. Options are available for units with a dual-hinge design, allowing the front door to open from either the left or right for increased access and flexibility.

Max mounting depth: 394 or 529 mm, model dependent

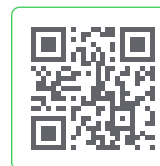


Vertical/low-profile

This 6U rack offers a unique low-profile solution for securely housing rack-mount equipment in confined spaces. Its design allows for mounting large-depth devices to a wall in a less obtrusive form factor compared to traditional wall-mount cabinets, making it ideal for space-constrained environments.

Max mounting depth: 762 mm

Take the 3D tour:



NetShelter Wall-mount Enclosures

Model (assembled)	Model (unassembled)	Rack Units	Height (mm)	Width (mm)	Depth (mm)	Max Equipment Depth (mm)	Static Load (kg / lb.)	Ventilation	Door Type*	Rating
SWITCH DEPTH										
AR106SH4	AR106	6	355	600	400	329 / 341	91 / 200	Passive	Perforated	IP20
AR109SH4	AR109	9	485	600	400	329 / 341	91 / 200	Passive	Perforated	IP20
AR112SH4		12	620	600	400	329 / 341	91 / 200	Passive	Perforated	IP20
SERVER DEPTH										
AR106SH6		6	355	600	600	529	91 / 200	Passive	Perforated	IP20
AR109SH6		9	485	600	600	529	91 / 200	Passive	Perforated	IP20
AR112SH6	AR112	12	620	600	600	529 / 541	91 / 200	Passive	Perforated	IP20
AR100		13	663	600	631	394	91 / 200	Passive	Glass	IP20
AR100HD		13	663	600	631	394	91 / 200	Passive	Perforated	IP20
UPS DEPTH										
AR112SM		12	662	600	1019	835	158 / 350	Passive	Perforated	IP2X
AR118SM		18	889	600	1019	835	158 / 350	Passive	Perforated	IP2X
AR124SM		24	1156	600	1019	835	158 / 350	Passive	Perforated	IP2X
VERTICAL/LOW PROFILE										
AR106V		6	648	965	631	762	113 / 250	Fan (120V)	Perforated	IP20
AR106VI		6	648	965	631	762	113 / 250	Fan (230V)	Perforated	IP20

Rack PDU Series Comparison

Rack Series Comparison

..... Rack PDU Series

Advanced

AP

Premium

PR

Essential

EP

Security & Control

SC

..... Rack Series

Premium

SX

Essential

SV

Soundproof

SP

Wall-mount

WX

2-Post & 4-Post

OF

Seismic, Colo & AV

CM

Custom & Configured

CC

Rugged

RX

Shock Packaging & Pallet

SH

..... Accessories & Upgrades

Airflow & Cabling

AC

Security & Access

SA

..... Index

Product Index

PX



NetShelter Open Frame Racks

Open Frame Racks offer a quality and cost-effective solution for installing rack-mountable equipment where security at the individual rack level is not required. Add high-density vertical cable managers for maximum cable volume.



Two-post rack

- 6061-T6 structural grade aluminum
- Self-squaring design



Four-post rack

- Steel construction
- Multiple toolless mounting points for hook-and-loop fasteners (AR8621) or toolless cable management rings (AR7540)
- Multi-position rack PDU mounting bracket (AR8652)
- Reversible stabilization plates
- Grounding inserts

Take the 3D tour:



Accessories available

Add vertical cable managers, overhead patch frames and more.



(AR8625 and AR8765 shown)



4U overhead patch frame (VDIM33174)

NetShelter Open Frame Racks

Model	Rack Units	Height (mm)	Width (mm)	Depth (mm)	Max Equipment Depth (mm)	Static Load (kg / lb.)	Hole Type
4 POST RACK							
AR203A	44	2130	600	747	740	907 / 2000	Square
AR204A	44	2130	600	747	740	907 / 2000	#12-24 Threaded
2 POST RACK							
AR201	45	2136	513	376	1048	340 / 750	#12-24 Threaded

Rack PDU Series Comparison

Rack Series Comparison

..... Rack PDU Series

Advanced

AP

Premium

PR

Essential

EP

Security & Control

SC

..... Rack Series

Premium

SX

Essential

SV

Soundproof

SP

Wall-mount

WX

2-Post & 4-Post

OF

Seismic, Colo & AV

CM

Custom & Configured

CC

Rugged

RX

Shock Packaging & Pallet

SH

..... Accessories & Upgrades

Airflow & Cabling

AC

Security & Access

SA

..... Index

Product Index

PX



Seismic, Colo and AV Racks

With IT enclosures designed for specific environments and applications, APC provides flexible platforms to meet unique rack space needs inside and outside the data center.



Seismic Enclosure

The NetShelter VX Seismic enclosure is designed for essential facilities and carrier applications in seismic environments. It meets the NEBS test standard GR-63-CORE Zone 4 at 1,000 lb. (453kg) equipment load.



Colo Rack

Designed for colocation facilities with customers requiring a minimal amount of rack space, the NetShelter SX colo rack has two compartments, each with a 3-digit combination style handle. This multi-tenant, security-enhanced enclosure has a compact width to optimize data center space.



AV Racks

NetShelter AV enclosures are feature-rich racks specifically designed for the professional audiovisual market and optimized for cable management, power distribution and airflow management.

Seismic, Colo and AV Racks

Model	Rack Units	Height (mm)	Width (mm)	Depth (mm)	Max Equipment Depth (mm)	Static Load (kg / lb.)	Dynamic Load (kg/ lb.)	Features	Doors	Sides
AV AUDIO / VIDEO										
AR3814	24	1199	600	825	702	1361 / 3000	1021 / 2250	#12-24 Holes	✓	✗
AR3810	42	1991	600	825	679	1361 / 3000	1021 / 2250	#12-24 Holes	✗	✗
AR3812	42	1991	600	806	679	1361 / 3000	1021 / 2250	#12-24 Holes	✓	✓
SX MULTI-COMPARTMENT / COLOCATION										
AR3200B2	20 (x2)	1991	600	1070	915	1814 / 4000	1021 / 2250	2x20U compartments	✓	✓
VX SEISMIC										
AR2144BLK	42	2070	600	1070	934	454 kg / 1000 lb. seismic load		Seismic Zone 4	✓	✓
AR2145BLK	42	2070	600	1070	934	454 kg / 1000 lb. seismic load		Seismic Zone 4	✓	✗

Rack PDU Series Comparison

Rack Series Comparison

..... Rack PDU Series

Advanced

AP

Premium

PR

Essential

EP

Security & Control

SC

..... Rack Series

Premium

SX

Essential

SV

Soundproof

SP

Wall-mount

WX

2-Post & 4-Post

OF

Seismic, Colo & AV

CM

Custom & Configured

CC

Rugged

RX

Shock Packaging & Pallet

SH

..... Accessories & Upgrades

Airflow & Cabling

AC

Security & Access

SA

..... Index

Product Index

PX



Configure-to-Order and Custom Racks

Configure-to-Order (CTO)

NetShelter Configurable Enclosures are a NetShelter enclosure range offering maximum flexibility. Configure-to-order all rack components, including sides, doors, roof and mounting rails. Have racks configured at our factory to save you effort for easier IT deployments.



Alternate roof designs:

- Server or networking
- Fan tray
- Open roof bridge
- No roof

Alternate side panels:

- Pass-through brushes
- Sides only where needed
- No sides

Cabinet colors:

- Black
- White

Packaging:

- Standard
- For equipment shipment up to 2,000 lb. (907 kg)



Alternate mounting rail configurations:

- Preset to specific depth
- Alternate mounting holes
- M6, 10-32, 12-24, 23 in. EIA

Alternate door handles:

- Standard handle
- Combination style

Alternate door configurations:

- Single or split doors front/back
- No doors

Common CTO configurations

Find [part numbers](#) for common requests, such as cabinets without sides or without sides and doors.

Engineer-to-Order (ETO)

Can't find what you're looking for with our standard and CTO options? We can work with you to create custom racks to meet your unique needs.

ETO capabilities include (but are not limited to):

- Unique colors
- Seismic
- Designs for colocation
- Unique dimensions
- Custom branding



[Request Easy Custom Racks](#) →

[Request NetShelter Custom Racks](#) →

[Rack PDU Series Comparison](#)

[Rack Series Comparison](#)

..... [Rack PDU Series](#)

Advanced

AP

Premium

PR

Essential

EP

Security & Control

SC

..... [Rack Series](#)

Premium

SX

Essential

SV

Soundproof

SP

Wall-mount

WX

2-Post & 4-Post

OF

Seismic, Colo & AV

CM

Custom & Configured

CC

Rugged

RX

Shock Packaging & Pallet

SH

..... [Accessories & Upgrades](#)

Airflow & Cabling

AC

Security & Access

SA

..... [Index](#)

Product Index

PX



NetShelter Rugged Enclosures

NetShelter RX enclosures are designed for rugged environments such as warehouses, factory floors, plants and other harsh locations. They're ideal for uncontrolled environments where dust, moisture, temperature and exposure vary widely.



Benefits:



NEMA rating for industrial environments

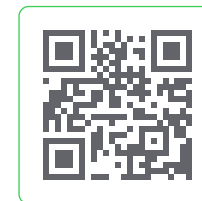


Can be shipped with pre-integrated UPS, PDU and monitoring components



Quickly deploy micro data centers for the industrial edge

Take the 3D tour:



NetShelter RX Enclosures

Model	Rack Units	Height (mm)	Width (mm)	Depth (mm)	Max Equipment Depth (mm)	Static Load (kg / lb.)	Rating	Ventilation	Door Type	Available in
NSYSFRSEDC20680	42	2100	600	800	652	399 / 880	NEMA 12	Sold separately	Solid	NAM
NSYSFRSEDC206100	42	2100	600	1000	852	399 / 880	NEMA 12	Sold separately	Solid	NAM
NSYSFRSEDC208100	42	2100	800	1000	852	399 / 880	NEMA 12	Sold separately	Solid	NAM
NSYSFRSEDC208120	42	2100	800	1200	1052	399 / 880	NEMA 12	Sold separately	Solid	NAM
AR5333	33	1641	762	1144	863	907 / 2000	NEMA 4	Sold separately	Solid	NAM
AR5333-2B	66	1641	1524	1144	863	1814 / 4000	NEMA 4	Sold separately	Solid	NAM
AR5333-3B	99	1641	2286	1144	863	2722 / 6000	NEMA 4	Sold separately	Solid	NAM
AR5342	42	2061	762	1144	863	907 / 2000	NEMA 4	Sold separately	Solid	NAM
AR5342-2B	84	2061	1524	1144	863	1814 / 4000	NEMA 4	Sold separately	Solid	NAM
AR5342-3B	126	2061	2286	1144	863	2722 / 6000	NEMA 4	Sold separately	Solid	NAM

Rack PDU Series Comparison

Rack Series Comparison

..... Rack PDU Series

Advanced

AP

Premium

PR

Essential

EP

Security & Control

SC

..... Rack Series

Premium

SX

Essential

SV

Soundproof

SP

Wall-mount

WX

2-Post & 4-Post

OF

Seismic, Colo & AV

CM

Custom & Configured

CC

Rugged

RX

Shock Packaging & Pallet

SH

..... Accessories & Upgrades

Airflow & Cabling

AC

Security & Access

SA

..... Index

Product Index

PX



NetShelter racks with shock packaging and shock pallet

“Rack and stack” made easy for equipment manufacturers

Secure shipping, fast deployment and enhanced integrated solutions with APC enclosures with shock packaging and shock pallet. These solutions offer:

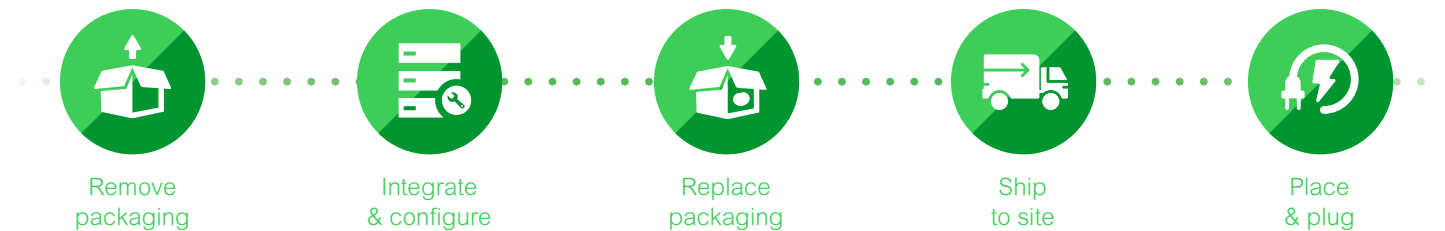
- Lower physical layer engineering and production costs
- Faster integration time of overall IT solution
- Reduction in physical layer floor space requirements during rack and stack
- Reduction in packaging and recycling of physical layer materials
- Certifications and reference designs with top IT manufacturers



Includes:

- Shock pallet
- Cardboard outer wrap and foam
- Plastic covering to keep dust debris out
- Ramp
- Cabinets include heavy duty casters, fixed and swivel for maneuverability

How does it work?



Secure shipping and fast deployment with Cisco + Schneider Electric

Today's converged and hyperconverged infrastructures and off-premises data centers require fully populated IT cabinets to be more securely shipped to customer or colocation sites for fast, low-risk deployment. The loss of or damage to even a single rack can run up to a million dollars or more.

Schneider Electric delivers a Cisco-validated shipping solution that simplifies Cisco UCS “rack and stack” and protects IT equipment to lower costs, reduce risk and provide speed and flexibility for deployment.



Rack PDU Series Comparison

Rack Series Comparison

..... Rack PDU Series

Advanced

AP

Premium

PR

Essential

EP

Security & Control

SC

..... Rack Series

Premium

SX

Essential

SV

Soundproof

SP

Wall-mount

WX

2-Post & 4-Post

OF

Seismic, Colo & AV

CM

Custom & Configured

CC

Rugged

RX

Shock Packaging & Pallet

SH

..... Accessories & Upgrades

Airflow & Cabling

AC

Security & Access

SA

..... Index

Product Index

PX



NetShelter racks with shock packaging and shock pallet

Model (Black)	Model (White)	U-space	Height (mm / in.)	Width (mm / in.)	Depth (mm / in.)	Max mounting depth (mm / in.)	Shipping load capacity (kg / lb.)	Packaged
NetShelter SX								
AR3003SP	–	12U	658 / 25.9	600 / 24	900 / 35.4	756 / 29.8	272 / 600	Shock pallet, packaging, one-time use ramp
AR3006SP	–	18U	925 / 36.4	600 / 24	900 / 35.4	756 / 29.8	408 / 900	Shock pallet, packaging, one-time use ramp
AR3103SP	–	12U	658 / 25.9	600 / 24	1070 / 42	921 / 36.3	272 / 600	Shock pallet, packaging, one-time use ramp
AR3106SP	–	18U	925 / 36.4	600 / 24	1070 / 42	921 / 36.3	408 / 900	Shock pallet, packaging, one-time use ramp
AR3104SP1	–	24U	1200 / 47	600 / 24	1070 / 42	915 / 36	907 / 2000	Shock pallet, packaging, one-time use ramp
AR3100SP	–	42U	1991 / 78.4	600 / 24	1070 / 42	915 / 36	907 / 2000	Shock pallet, packaging, one-time use ramp
AR3105SP	–	45U	2124 / 83	600 / 24	1070 / 42	915 / 36	907 / 2000	Shock pallet, packaging, one-time use ramp
AR3107SP	–	48U	2258 / 88.9	600 / 24	1070 / 42	915 / 36	907 / 2000	Shock pallet, packaging, one-time use ramp
AR3150SP	–	42U	1991 / 78.4	750 / 30	1070 / 42	915 / 36	907 / 2000	Shock pallet, packaging, one-time use ramp
AR3155SP	–	45U	2124 / 83	750 / 30	1070 / 42	915 / 36	907 / 2000	Shock pallet, packaging, one-time use ramp
AR3157SP	AR3157WSP	48U	2258 / 88.9	750 / 30	1070 / 42	915 / 36	907 / 2000	Shock pallet, packaging, one-time use ramp
AR3300SP	AR3300WSP	42U	1991 / 78.4	600 / 24	1200 / 48	1048 / 41.3	907 / 2000	Shock pallet, packaging, one-time use ramp
AR3305SP	–	45U	2124 / 83	600 / 24	1200 / 48	1048 / 41.3	907 / 2000	Shock pallet, packaging, one-time use ramp
AR3307SP	AR3307WSP	48U	2258 / 88.9	600 / 24	1200 / 48	1048 / 41.3	907 / 2000	Shock pallet, packaging, one-time use ramp
AR3350SP	AR3350WSP X832	42U	1991 / 78.4	750 / 30	1200 / 48	1048 / 41.3	907 / 2000	Shock pallet, packaging, one-time use ramp
AR3355SP	–	45U	2124 / 83	750 / 30	1200 / 48	1048 / 41.3	907 / 2000	Shock pallet, packaging, one-time use ramp
AR3357SP	AR3357WSP	48U	2258 / 88.9	750 / 30	1200 / 48	1048 / 41.3	907 / 2000	Shock pallet, packaging, one-time use ramp
NetShelter Wall-mount								
AR106V	–	6U	648 / 25.5	965 / 38	331 / 13	762 / 30	113 / 250	Shock packaging
AR106VI	–	6U	648 / 25.5	965 / 38	331 / 13	762 / 30	113 / 250	Shock packaging

Rack PDU Series Comparison

Rack Series Comparison

..... Rack PDU Series

Advanced

AP

Premium

PR

Essential

EP

Security & Control

SC

..... Rack Series

Premium

SX

Essential

SV

Soundproof

SP

Wall-mount

WX

2-Post & 4-Post

OF

Seismic, Colo & AV

CM

Custom & Configured

CC

Rugged

RX

Shock Packaging & Pallet

SH

..... Accessories & Upgrades

Airflow & Cabling

AC

Security & Access

SA

..... Index

Product Index

PX



NetShelter Pod Containment

Fast, flexible and cost-optimized architecture designed for large data center deployments

The data center industry continues to evolve at a faster pace than ever before. Trends toward big data, Internet of Things (IoT), and the shift to the cloud are driving the need to deploy IT quickly and at a massive scale. The method of deploying IT is also changing with the shift to fully integrated racks and new rack designs.

To respond to these challenges, customers are driving for faster and more cost-efficient deployments that also maintain flexibility. Traditional approaches may not be ideal for all customers.

Benefits of NetShelter Pod Containment:

- Rack-ready system designed to deploy IT at scale in increments of 8 to 12 racks
- A freestanding structure supports necessary IT infrastructure while providing air containment for all rack types
- Easily integrates with a variety of cooling and power configurations
- Can support up to 4,000 lb. of infrastructure and replace the need to hang equipment from the ceiling



Available as a complete Data Center Solution with integrated power, rack and cooling.

[Learn more →](#)

EcoTruxure™
Innovation At Every Level

[Rack PDU Series Comparison](#)

[Rack Series Comparison](#)

..... Rack PDU Series

Advanced

AP

Premium

PR

Essential

EP

Security & Control

SC

..... Rack Series

Premium

SX

Essential

SV

Soundproof

SP

Wall-mount

WX

2-Post & 4-Post

OF

Seismic, Colo & AV

CM

Custom & Configured

CC

Rugged

RX

Shock Packaging & Pallet

SH

..... Accessories & Upgrades

Airflow & Cabling

AC

Security & Access

SA

..... Index

Product Index

PX



NetShelter Aisle Containment

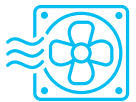
Next-generation data center containment

The dynamic nature of whitespace makes it tough to optimize cooling and manage airflow in a constantly changing environment. You need a solution that adapts fast. NetShelter Aisle Containment combines airflow intelligence with flexible containment that delivers superior cooling while helping you reduce your carbon footprint.



Superior cooling performance

- Get up to 20% more cooling performance from your existing infrastructure*



Intelligent airflow control

- Save up to 40% fan energy and reduce air leakage with Active Flow Controller**



Faster install and future flexible

- Adapts to any configuration
- Lightweight for maneuverability
- 5-year warranty***



Reduce carbon footprint

- Reduce energy expense by 5–10%†

[Learn more](#) →

*Source: [Link](#)

**Compared to constant fan speed. [Source: Link](#)

***Excludes lighting control box.

† General savings expected from containment. Does not include additional savings expected from Active Flow Controller. [Source: Link](#)



[Rack PDU Series Comparison](#)

[Rack Series Comparison](#)

..... [Rack PDU Series](#)

Advanced

AP

Premium

PR

Essential

EP

Security & Control

SC

..... [Rack Series](#)

Premium

SX

Essential

SV

Soundproof

SP

Wall-mount

WX

2-Post & 4-Post

OF

Seismic, Colo & AV

CM

Custom & Configured

CC

Rugged

RX

Shock Packaging & Pallet

SH

..... [Accessories & Upgrades](#)

Airflow & Cabling

AC

Security & Access

SA

..... [Index](#)

Product Index

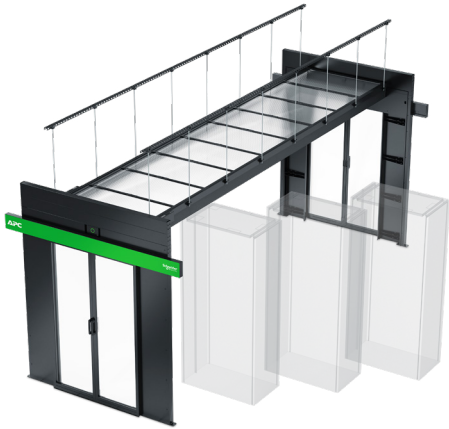
PX



NetShelter Aisle Containment

Adaptable configurations

Simple design and endless configurations — that's the principle behind this next generation of aisle containment. Intelligent airflow features take containment a step further, proactively optimizing energy use. Plus, it's easy to modify or expand your containment solution as your needs change.



Rack-ready system

- Ideal for new builds and colocations
- Ceiling support for rack-ready layouts



Flexible rack accommodation

- Supports uneven spacing and rack sizes (42U–52U)
- Ceiling-supported configurations work with any rack vendor



Intelligence and access options

- Active Flow Controller provides up to 40% fan energy reduction
- Breakout, dual sliding, single sliding and curtain door options



Aisle variations

- Accommodates aisle widths of 3 ft. (972 mm), 4 ft. (1268 mm) and 6 ft. (1860 mm)
- Dual and single aisle (for odd rows and small applications)

[Learn more](#) →

[Rack PDU Series Comparison](#)

[Rack Series Comparison](#)

..... Rack PDU Series

Advanced

AP

Premium

PR

Essential

EP

Security & Control

SC

..... Rack Series

Premium

SX

Essential

SV

Soundproof

SP

Wall-mount

WX

2-Post & 4-Post

OF

Seismic, Colo & AV

CM

Custom & Configured

CC

Rugged

RX

Shock Packaging & Pallet

SH

..... Accessories & Upgrades

Airflow & Cabling

AC

Security & Access

SA

..... Index

Product Index

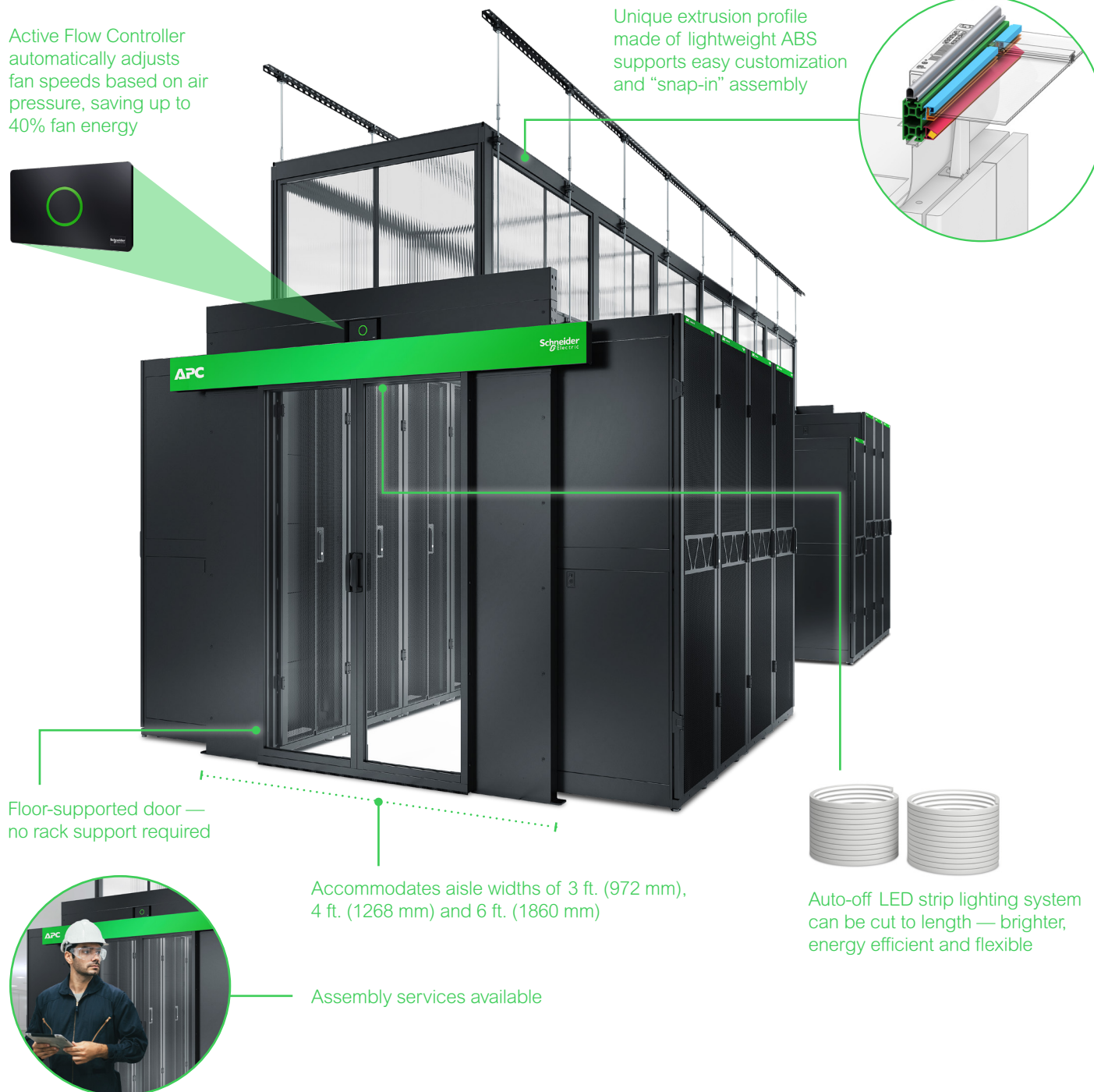
PX



NetShelter Aisle Containment

Design highlights

The NetShelter Aisle Containment design showcases energy efficiency and innovation with its intelligent airflow management — improving cooling efficiency, reducing energy consumption and helping to ensure optimal performance. Here are some additional highlights.



Rack PDU Series Comparison

Rack Series Comparison

..... Rack PDU Series

Advanced

AP

Premium

PR

Essential

EP

Security & Control

SC

..... Rack Series

Premium

SX

Essential

SV

Soundproof

SP

Wall-mount

WX

2-Post & 4-Post

OF

Seismic, Colo & AV

CM

Custom & Configured

CC

Rugged

RX

Shock Packaging & Pallet

SH

..... Accessories & Upgrades

Airflow & Cabling

AC

Security & Access

SA

..... Index

Product Index

PX



NetShelter Aisle Containment

Configuring and ordering

To build your solution, work with your sales representative or preferred partner to develop an end-to-end design that suits your needs. Approved configurations come complete with 3D renders, technical details and bill of materials through Row Designer on designportal.apc.com.

Category	SKU	Description	
Roof system (horizontal and vertical)	NSAC2001	APC NetShelter Aisle Containment, frame extrusion & end cover, set of 4, black	
	NSAC2002	APC NetShelter Aisle Containment, panel mounting rail A&B, set of 10, black	
	NSAC2151	APC NetShelter Aisle Containment, panel connector 3 ft., set of 3, black	
	NSAC2152	APC NetShelter Aisle Containment, panel connector 4 ft., set of 3, black	
	NSAC2153	APC NetShelter Aisle Containment, panel connector plastic 1200 mm, set of 6, black	
	NSAC2601	APC NetShelter Aisle Containment, L connector, black	
	NSAC2603	APC NetShelter Aisle Containment, interior connector, black	
	NSAC2604	APC NetShelter Aisle Containment, cabinet install bracket, black	
	NSAC2606	APC NetShelter Aisle Containment, right angle connector bracket, black	
	NSAC2607	APC NetShelter Aisle Containment, mounting rail connector, black	
	NSAC2608	APC NetShelter Aisle Containment, straight connector, black	
	NSAC2610	APC NetShelter Aisle Containment, roof bracket for POD containment, black	
	NSAC2006	APC NetShelter Aisle Containment, seal coextrusion 1000 mm, set of 6, black	
	NSAC2003	APC NetShelter Aisle Containment, cabinet seal coextrusion, 1000 mm, set of 6, black	
	Ceiling support kit	NSAC2051	APC NetShelter Aisle Containment, rod mounting brackets, set of 2, black
		NSAC2052	APC NetShelter Aisle Containment, ceiling mounting rail 1500 mm, set of 2, black
NSAC2653		APC NetShelter Aisle Containment, supporting rods, 1500 mm, set of 8, zinc	
Lighting kit	NSAC2121	APC NetShelter Aisle Containment, LED module	
	NSAC2122	APC NetShelter Aisle Containment, lighting control box, black	
	NSAC2004	APC NetShelter Aisle Containment, lighting mounting rail 1000 mm, set of 6, black	
Roof panels	NSAC2101	APC NetShelter Aisle Containment, multi wall panel 644 x 1232 mm, set of 5	
	NSAC2102	APC NetShelter Aisle Containment, mutli wall panel 644 x 1825 mm, set of 5	
Doors	NSAC2401	APC NetShelter Aisle Containment, dual sliding door, black	
	NSAC2402	APC NetShelter Aisle Containment, single sliding door, black	
	ACDC2400	APC NetShelter Aisle Containment, Gen 1, breakout door, sliding	
	ACDC2401	APC NetShelter Aisle Containment, Gen 1, breakout door header, for 42U SX	
	ACDC2402	APC NetShelter Aisle Containment, Gen 1, breakout door header, for 45U SX	
	ACDC2403	APC NetShelter Aisle Containment, Gen 1, breakout door header, for 48U SX	
	ACDC2404	APC NetShelter Aisle Containment, Gen 1, breakout door post, 900–1200 mm (36–48 in.) aisle width	
	ACDC2405	APC NetShelter Aisle Containment, Gen 1, breakout door post, 1200–1500 mm (48–60 in.) aisle width	
Curtains	ACDC2406	APC NetShelter Aisle Containment, Gen 1, breakout door post, 1500–1800mm (60–71 in.) aisle width	
	ACDC2410	APC NetShelter Aisle Containment, Gen 1, curtain door mounting rail, 900–1200 mm (36–48 in.) aisle width	
Air sealing kit	ACDC2411	APC NetShelter Aisle Containment, Gen 1, curtain door mounting rail, 1500–1800 mm (60–71 in.) aisle width	
	FS-AC-1001-U	Air sealing kit for APC NetShelter Aisle or POD Containment	
Assembly services	WASSEMNSACS-AX-20	Assembly service for NetShelter Aisle Containment, short (up to 7 m), 5 x 8	
	WASSEMNSACL-AX-20	Assembly service for NetShelter Aisle Containment, long (above 7 m), 5 x 8	

Rack PDU Series Comparison

Rack Series Comparison

..... Rack PDU Series

Advanced

AP

Premium

PR

Essential

EP

Security & Control

SC

..... Rack Series

Premium

SX

Essential

SV

Soundproof

SP

Wall-mount

WX

2-Post & 4-Post

OF

Seismic, Colo & AV

CM

Custom & Configured

CC

Rugged

RX

Shock Packaging & Pallet

SH

..... Accessories & Upgrades

Airflow & Cabling

AC

Security & Access

SA

..... Index

Product Index

PX



NetShelter Rack Containment

Intelligent air containment solutions that protect critical IT equipment and personnel

This thermal containment solution is designed to increase cooling system efficiency while protecting critical IT equipment and personnel. The NetShelter Rack Containment modular design easily adapts to both the front and rear of the racks and close-coupling cooling units, simplifying installation.

Details:

- Containment for a single rack
- Modular design easily adapts to both the front and rear of the racks and close-coupling cooling units, simplifying installation
- A scalable open plenum enables capacity sharing to improve cooling system redundancy and utilization

Available as a complete Data Center Solution with integrated power, rack and cooling.

[Learn more →](#)



Ecostruxure™
Innovation At Every Level

Rack PDU Series Comparison

Rack Series Comparison

..... Rack PDU Series

Advanced

AP

Premium

PR

Essential

EP

Security & Control

SC

..... Rack Series

Premium

SX

Essential

SV

Soundproof

SP

Wall-mount

WX

2-Post & 4-Post

OF

Seismic, Colo & AV

CM

Custom & Configured

CC

Rugged

RX

Shock Packaging & Pallet

SH

..... Accessories & Upgrades

Airflow & Cabling

AC

Security & Access

SA

..... Index

Product Index

PX



Passive cooling accessories

Air sealing

Covers open rack space to improve cooling efficiency.



AR8136BLK installed



AR7731

SKU	Description
AR8136BLK	1U toolless snap-in blanking panel, 10 pack (AR8136WHT white version)
AR8136BLK200	1U toolless snap-in blanking panel, 200 pack (AR8136WHT200 white version)
AR8108BLK	1U standard metal blanking panel, 2 pack
AR8101BLK	1U, 2U, 4U, 8U blanking panel kit
AR7708	NetShelter SX Air Recirculation Prevention Kit for closing gaps and pass-through holes between side panels and equipment mounting rails
AR7731	NetShelter SX external air sealing kit for sealing external openings at roof and floor, 10 pack

KoldLok® raised floor grommets

Seal a variety of cutouts in a raised floor environment to improve cooling under the raised floor.

SKU	Description
AR7720	Integral raised floor grommet (enclosed) for new installation, 10 pack
AR7730	Surface-mount raised floor grommet (split) for existing cables, 10 pack

Active cooling accessories

Rack-mounted cooling

Rack-mounted cooling solution for micro data center and edge computing.



SKU	Description
ACRMD4KT-1	3.5kW split system indoor unit, gravity drain
ACRMD4KT-2	3.5kW split system outdoor unit, pre-charged refrigerant
ACRMD4KI-3	3.5kW split system outdoor unit, none pre-charged

Ducting only

Vertical exhaust duct (VED) for NetShelter SX is an easy-to-install, low-cost cooling option that can increase the efficiency of the attached cooling system.



AR7751 and AR7755 installed on AR3300 with cable management

SKU	Description
AR7751	VED for 24 in. enclosures, short range
AR7752	VED for 24 in. enclosures, tall range
AR7753	VED for 30 in. enclosures, short range
AR7754	VED for 30 in. enclosures, tall range
AR7755	Overhead cable extension for VED 24 in.
AR7756	Overhead cable extension for VED 30 in.

Roof fan trays available for 42 in. deep enclosures.

Rack fan panel

2U rack-mounted fan panel and accessories.



ACF600

SKU	Description
ACF600	2U rack fan panel (120V)
ACF601	Rack fan panel temperature controller
ACAC40000	2U vent panel with temperature display
ACAC40001	2U vent panel

Rack PDU Series Comparison

Rack Series Comparison

..... Rack PDU Series

Advanced

AP

Premium

PR

Essential

EP

Security & Control

SC

..... Rack Series

Premium

SX

Essential

SV

Soundproof

SP

Wall-mount

WX

2-Post & 4-Post

OF

Seismic, Colo & AV

CM

Custom & Configured

CC

Rugged

RX

Shock Packaging & Pallet

SH

..... Accessories & Upgrades

Airflow & Cabling

AC

Security & Access

SA

..... Index

Product Index

PX



NetShelter cable management

Vertical cable management

Every NetShelter SX enclosure contains zero-U accessory channels in the rear of the rack. Use these to toollessly mount vertical rack PDUs and vertical cable organizers.

Additional vertical zero-U accessory channels

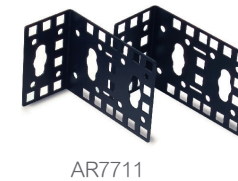
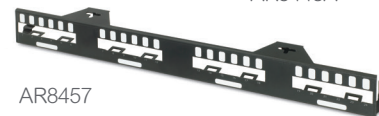
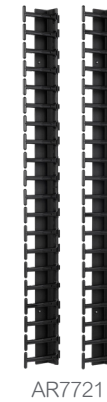
SKU	Description
AR7502	Vertical 0U accessory channel, 42U, 2 pack
AR7552	Vertical 0U accessory channel, 45U, 2 pack
AR7572	Vertical 0U accessory channel, 48U, 2 pack
AR7511	Narrow vertical 0U accessory channel, 42U
AR7505	Vertical cable organizer, center rear mount

Accessories for vertical cable management

SKU	Description	Features
AR8442	Vertical cable organizer, eight cable rings, 0U	<ul style="list-style-type: none"> Supports 35 to 55 CAT 6/CAT 6A data cables Mounts toollessly on the vertical 0U accessory channel
AR8443A	Vertical fiber organizer	<ul style="list-style-type: none"> Installs toollessly Takes up one bay of channel Fiber spool only kit available (AR8444)
AR8457	Data distribution 0U SX panel	<ul style="list-style-type: none"> Installs toollessly Takes up one bay of channel Toollessly mounts up to four DDC cable heads, 24 ports for rack-to-rack connections
AR7710	Cable containment brackets with rack PDU mounting	<ul style="list-style-type: none"> Low-profile vertical cable management Supports 60 to 90 CAT 6/CAT 6A data cables Mounts toollessly on the vertical 0U accessory channel
AR7711	Zero-U accessory bracket	<ul style="list-style-type: none"> Mounts rack PDUs in rear-facing orientation Supports third-party accessories in numerous mounting configurations Mounts 1U or 2U patch panels or other networking accessories
AR8621	Hook-and-loop cable managers, 10 pack	<ul style="list-style-type: none"> Secures and bundles cables with hook-and-loop ties Mounts toollessly on the vertical 0U accessory channel
AR7721, 22, 23	Low-profile vertical cable managers, zero U	<ul style="list-style-type: none"> Supports up to 38 CAT 6A or 251 fiber cables Mounts toollessly on the vertical 0U accessory channel

High-capacity cable management

SKU	Description
AR7580A	High-capacity vertical cable manager for NetShelter SX 30 in. wide enclosures (AR3x5x) supports 190 to 250 CAT 6A/CAT 6 data cables per section and 190 CAT 6A per channel section. Each kit covers one corner of the enclosure.
AR7581A	Hinged covers for AR7580A vertical cable managers.



Rack PDU Series Comparison

Rack Series Comparison

..... Rack PDU Series

Advanced

AP

Premium

PR

Essential

EP

Security & Control

SC

..... Rack Series

Premium

SX

Essential

SV

Soundproof

SP

Wall-mount

WX

2-Post & 4-Post

OF

Seismic, Colo & AV

CM

Custom & Configured

CC

Rugged

RX

Shock Packaging & Pallet

SH

..... Accessories & Upgrades

Airflow & Cabling

AC

Security & Access

SA

..... Index

Product Index

PX



NetShelter cable management

Horizontal cable management

Finger-type horizontal cable managers

Cable managers for patching and crossover applications featuring smooth radius plastic fingers that protect the cable from kinking and binding. Hinged, snap-on covers provide a clean look and retain large cable bundles. These cable managers include hardware for double-sided configurations with two units.

SKU	Description
AR8602A	1U horizontal cable manager with 4 in. (101 mm) fingers and snap-on cover
AR8600A	2U horizontal cable manager with 4 in. (101 mm) fingers and snap-on cover
AR8612	1U horizontal cable manager with 6 in. (152 mm) fingers and snap-on cover
AR8606	2U horizontal cable manager with 6 in. (152 mm) fingers and snap-on cover
AR8603A	2U horizontal cable manager with 6 in. (152 mm) fingers, snap-on cover, rear cable pass-through holes and slots for AR8008BLK/AR8016ABLK horizontal cable channel
AR8605	3U horizontal cable manager with 6 in. (152 mm) fingers, snap-on cover, rear cable pass-through holes and cable channel slots

Ring-type horizontal cable managers

Economical cable managers for patching applications featuring various configurations to meet specific needs.

SKU	Description
AR8425A	1U horizontal cable manager with four rings
AR8426A	2U horizontal cable manager with four rings
AR8428	2U horizontal cable manager with four rings and pass-through holes
AR8427A	2U horizontal cable manager with multiple rings and small cable retainers
AR8113A	Cable management rings, 10 pack (5 large, 5 small)
AR7707	Cable management rings, 8 in. (203 mm) deep for 30 in. (750 mm) wide enclosures (AR3x5x), 8 pack

Horizontal cable management accessories

SKU	Description
AR8429	1U cable pass-through manager with brush strip
AR8129	Cable management arm for use with sliding shelves
AR8008BLK	Horizontal cable side channel, 18 in. (457 mm) to 30 in. (750 mm) adjustment, for routing cable front-to-back between the standard wide rack mounting rails or AR8603 and AR8428 horizontal cable managers
AR8016ABLK	Horizontal cable side channel, 10 in. (254 mm) to 18 in. (457 mm) adjustment, for routing cable front-to-back between the standard wide rack mounting rails or AR8603 and AR8428 horizontal cable managers
AR7706	Mounting rail brush strips for 30 in. (750 mm) wide enclosures (AR3x5x), 6 pack



Accessories are now available for pre-integration in NetShelter Racks and Enclosures.

Contact your Schneider Electric representative to learn how.

Rack PDU Series Comparison

Rack Series Comparison

..... Rack PDU Series

Advanced

AP

Premium

PR

Essential

EP

Security & Control

SC

..... Rack Series

Premium

SX

Essential

SV

Soundproof

SP

Wall-mount

WX

2-Post & 4-Post

OF

Seismic, Colo & AV

CM

Custom & Configured

CC

Rugged

RX

Shock Packaging & Pallet

SH

..... Accessories & Upgrades

Airflow & Cabling

AC

Security & Access

SA

..... Index

Product Index

PX



NetShelter SX cable management

Overhead cable troughs and partitions

NetShelter enclosures allow you to use a system of troughs and partitions for routing power and data cables across the top.

These troughs and partitions:

- Reduce the need for expensive suspended cable tray systems
- Install toollessly with snap-in tabs and have standard attachment points for cable ladder systems

Enclosure troughs are shown here. For information on power and cooling troughs and partitions, see the [APC website](#).



1 Power cable trough

- Supports power distribution cables
- Provides separation from data cables
- Data cables pass through underneath to front partitioned area

SKU	Description
AR8561	Cable trough, 24 in. (600 mm) enclosures
AR8571	Cable trough, 30 in. (750 mm) enclosures

2 Solid data cable partition

- Partitions the top of the enclosure into cable routing areas
- Solid face provides clean appearance at the front of the enclosure

SKU	Description
AR8163ABLK	Pass-through data partition, 24 in. (600 mm) enclosures
AR8173BLK	Pass-through data partition, 30 in. (750 mm) enclosures

3 Pass-through data cable partition

- Partitions the top of the enclosure into cable routing areas
- Pass-through hole provides cable access into multiple cable areas

SKU	Description
AR8162ABLK	Solid data partition, 24 in. (600 mm) enclosures
AR8172BLK	Solid data partition, 30 in. (750 mm) enclosures

4 Cable ladders and accessories

- Cable ladders and attachment kits for routing power and data cabling overhead from rack to rack



SKU	Cable Ladders and Attachment Kits	SKU	Ladder Accessories
AR8164ABLK	Cable ladder, 6 in. (152 mm) (AR8164AKIT 6 in. ladder with attach kit)	AR8461	Ladder corner clamp
AR8165ABLK	Cable ladder, 12 in. (304 mm) (AR8165AKIT 12 in. ladder with attach kit)	AR8462	Ladder angle clamp
AR8576	Alternate mounting — ladder to power troughs	AR8463	Ladder stacking
AR8177BLK	Alternate mounting — ladder to data partitions	AR8465	Ladder wall termination
AR8168BLK	Ladder to NetShelter SX roof	AR8169	Ladder clamp kit
AR8186	Ladder elevation bracket		
AR8460	Ladder to two-post rack		



AR8561



AR8162ABLK



AR8163ABLK



AR8186

Rack PDU Series Comparison

Rack Series Comparison

..... Rack PDU Series

Advanced

AP

Premium

PR

Essential

EP

Security & Control

SC

..... Rack Series

Premium

SX

Essential

SV

Soundproof

SP

Wall-mount

WX

2-Post & 4-Post

OF

Seismic, Colo & AV

CM

Custom & Configured

CC

Rugged

RX

Shock Packaging & Pallet

SH

..... Accessories & Upgrades

Airflow & Cabling

AC

Security & Access

SA

..... Index

Product Index

PX



Shelves and mounting hardware

Mounting accessories to aid in the installation of IT equipment and secure racks into position

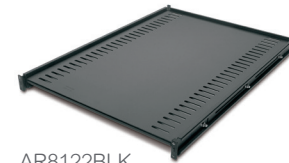
Shelving

Fixed and sliding shelves to enable the mounting of tower units, monitors and other equipment.

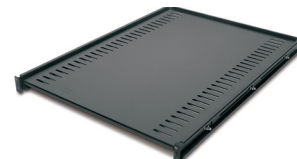
SKU	Description
AR8105BLK	Fixed shelf, 50 lb. (22 kg)
AR8122BLK	Fixed shelf, 250 lb. (113 kg)
AR8123BLK	Sliding shelf, 100 lb. (45 kg)
AR8128BLK	Sliding shelf, 200 lb. (90 kg)
AR8422	Double-side fixed shelf for two-post rack
AR8126ABLK	17 in. (431 mm) sliding keyboard shelf
AR8127BLK	19 in. (482 mm) sliding, rotating keyboard shelf
AR8006A	Miscellaneous equipment support rails for 24 in. (600 mm) wide enclosure



AR8105BLK



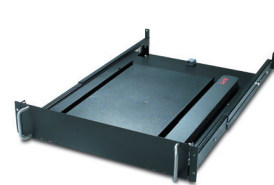
AR8122BLK



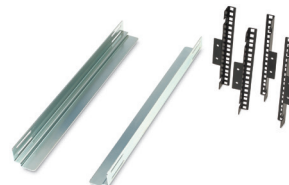
AR8128BLK



AR8422



AR8126ABLK/AR8127BLK



AR8006A

Bolt-down and stabilization

Stabilization plates and hardware to prevent tip over in stand-alone rack applications and meet specific anchoring requirements.

SKU	Description
AR7700	NetShelter SX stabilization plate to prevent tipping when sliding out equipment
AR7701	NetShelter SX bolt-down kit, meets IBC seismic requirements for moderate seismic zones
AR7701-S	NetShelter SX bolt-down kit, meets IBC seismic requirements for high seismic zones



AR7701 and AR7701-S



AR7700

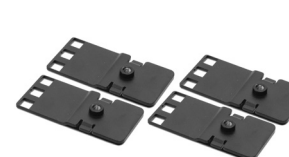
Miscellaneous mounting brackets

Variety of mounting brackets for mounting IT equipment.

SKU	Description
AR7711	0U multipurpose accessory mounting bracket for side mounting of 1U/2U products and rack PDUs
AR8150BLK	23 in. (584 mm) to 19 in. (482 mm) mounting adapter brackets for use with AR7510 23 in. (584 mm) EIA mounting rails



AR7711

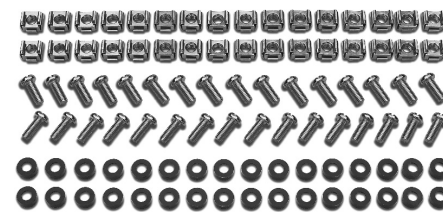


AR8150BLK

Hardware kits

Available for additional hardware needs or to accommodate equipment mounted in varying mounting options.

SKU	Description
AR8100	M6 cage nuts and screws, 32 pack
AR8400	#12-24 screws, 100 pack
AR8005	#10-32 cage nuts, 36 pack



AR8100

Rack PDU Series Comparison

Rack Series Comparison

..... Rack PDU Series

Advanced

AP

Premium

PR

Essential

EP

Security & Control

SC

..... Rack Series

Premium

SX

Essential

SV

Soundproof

SP

Wall-mount

WX

2-Post & 4-Post

OF

Seismic, Colo & AV

CM

Custom & Configured

CC

Rugged

RX

Shock Packaging & Pallet

SH

..... Accessories & Upgrades

Airflow & Cabling

AC

Security & Access

SA

..... Index

Product Index

PX



NetShelter SX rack components

Replacement doors, side panels, roofs

Standard doors, side panels and roofs are available for all enclosure sizes.



Specialty roofs, side panels and accessories

SKU	Description
AR7252*	Networking roof for high density cabling, 30 in. (750 mm) wide x 42 in. (1070 mm) deep
AR7716*	Networking roof for high density cabling, 30 in. (750 mm) wide x 42 in. (1070 mm) deep
AR7215	NetShelter AV enclosure top mount conduit access adapter
AR7209	Open roof support bridge for overhead troughs and partitions
AR7305A	NetShelter SX pass-through side panel, 42U x 42 in. (1070 mm) deep
AR7313	NetShelter SX pass-through side panel, 42U x 47.5 in. (1200 mm) deep
AR7315	NetShelter SX pass-through side panel, 45U x 42 in. (1070 mm) deep
AR7316	NetShelter SX pass-through side panel, 45U x 47.5 in. (1200 mm) deep
AR7375	NetShelter SX pass-through side panel, 48U x 42 in. (1070 mm) deep
AR7314	NetShelter SX pass-through side panel, 48U x 47.5 in. (1200 mm) deep
AR7714	Replacement snap-in brush strips for SX roofs
ACF501	Roof fan for 24 in. (600 mm) wide x 42 in. (1070 mm) deep enclosures, 120 Vac
ACF502	Roof fan for 24 in. (600 mm) wide x 42 in. (1070 mm) deep enclosures, 208–230 Vac
ACF503	Roof fan for 30 in. (750 mm) wide x 42 in. (1070 mm) deep enclosures, 120 Vac
ACF504	Roof fan for 30 in. (750 mm) wide x 42 in. (1070 mm) deep enclosures, 208–230 Vac
ACF505	Roof fan for NetShelter AV 24 in. (600 mm) wide x 32.5 in. (825 mm) deep, 115 Vac
AR8132A	Combination lock handle for NetShelter SX enclosures, 2 pack

*For white version add W to part number

Rails

Mounting rails

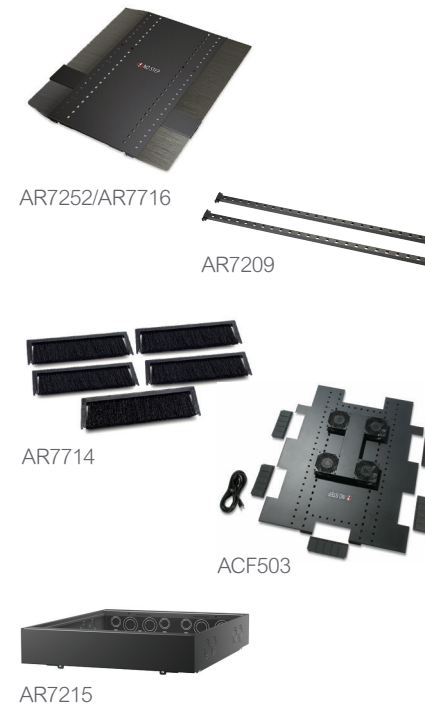
Vertical EIA rail mounting kits for different widths and depths.

SKU	Description
AR7510	23 in. (584 mm) EIA mounting rails for 42U x 30 in. (750 mm) wide enclosures

Recessed rail kits

Intermediate mounting rails for supporting shallow-depth equipment.

SKU	Description
AR7503	42U x 24 in. (600 mm) wide
AR7504	48U x 24 in. (600 mm) wide
AR7508	42U x 30 in. (750 mm) wide
AR7578	48U x 30 in. (750 mm) wide



Rack PDU Series Comparison

Rack Series Comparison

..... Rack PDU Series

Advanced

AP

Premium

PR

Essential

EP

Security & Control

SC

..... Rack Series

Premium

SX

Essential

SV

Soundproof

SP

Wall-mount

WX

2-Post & 4-Post

OF

Seismic, Colo & AV

CM

Custom & Configured

CC

Rugged

RX

Shock Packaging & Pallet

SH

..... Accessories & Upgrades

Airflow & Cabling

AC

Security & Access

SA

..... Index

Product Index

PX



NetBotz security and monitoring

NetBotz devices for enhanced security and environmental monitoring



Physical security

- Keycard access control
- Remote access control with intrusion detection and notification
- Remote camera monitoring through NetBotz IP camera



Environmental monitoring

- Wide range of wired and wireless sensor support to monitor the health of your IT assets
- Temperature, humidity, leak, door, smoke, vibration, dew point, airflow, dry contact, 4-20mA and 0-5V



Management capabilities

- Alarming allows alerts, multiple notification methods, scheduling, graph and video attachments, escalation
- Integrate with EcoStruxure IT Expert to manage multiple NetBotz devices through a single interface and view historical alarms and sensor data



NBRK0250A



NBWL0755



NBRK0750



NBPD0165

Flexible access control

Configure proximity cards for access or control access via web browser for remote management and notification.



APC Rack Access Control	Model	For use with	Description	Features
<p>125 kHz Access Control</p>	NBACS125 NBHN125S* (single handle)	NetBotz 250 or 750	Stand-alone appliance for two handles to plug into (i.e., one appliance per rack)	<ul style="list-style-type: none"> • Central authentication via RADIUS • Remote Syslog capability
<p>13.56 MHz Access Control</p>	NBACS1356 NBHN1356S* (single handle)	NetBotz 250 or 750		
<p>Rack Access Pods</p>	NBPD0175	NetBotz 750 or 755	Rack access pod that is daisy chained off a NetBotz 750 or 755 appliance	<ul style="list-style-type: none"> • Basement or 19 in. mounting • Supports NetShelter SX, SV and CX • Supports up to 200 unique users

*Single handle for NetShelter Wall-mount Enclosures AR1xxSHx.

Rack PDU Series Comparison

Rack Series Comparison

Rack PDU Series

Advanced

AP

Premium

PR

Essential

EP

Security & Control

SC

Rack Series

Premium

SX

Essential

SV

Soundproof

SP

Wall-mount

WX

2-Post & 4-Post

OF

Seismic, Colo & AV

CM

Custom & Configured

CC

Rugged

RX

Shock Packaging & Pallet

SH

Accessories & Upgrades

Airflow & Cabling

AC

Security & Access

SA

Index

Product Index

PX



LCD monitors and KVM switches

Rack LCD Console

Optimize rack space and maximize system visibility with a NetShelter Rack LCD Console. A streamlined solution built for server management, the console can be used in a variety of IT environments, from computer rooms to large data centers.

What's included:

- Keyboard with touchpad
- LCD monitor (17 or 19 in.)
- USB port for external media
- Integrated 8 or 16 port analog KVM switch (optional, 17 in. model only)

Benefits:

- Space-saving 1U design
- Ultra-thin LCD screen
- Easy to install
- Easy to add a KVM switch to back of monitor

Rack KVM switches

Access your servers across the room or across the world. APC Rack KVM switches empower IT administrators through both local and remote POST- and BIOS-level access and control of connected servers.



KVM1116R



KVM-DVIVMCAC

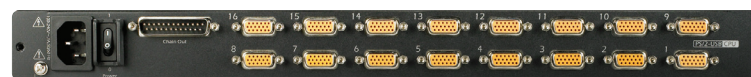


AP5253



AP5808

LCD consoles	Model
17 in. rack LCD console	AP5717
19 in. rack LCD console	AP5719



AP5816

LCD consoles with integrated KVM switch	SKU
17 in. rack LCD console with integrated 8-port KVM switch	AP5808
17 in. rack LCD console with integrated 16-port KVM switch	AP5816

KVM switches	SKU
16-port digital IP KVM with virtual media, one remote user	KVM1116R
16-port analog enterprise KVM with virtual media, two local users	KVM0216A
16-port analog KVM, one local user	KVM0116A
8-port analog KVM, one local user	KVM0108A

KVM accessories	SKU
KVM DVI server module with virtual media and KVM-DVIVMCAC CAC support	KVM-DVIVMCAC
KVM HDMI server module with virtual media and KVM-HDMIVMCAC CAC support	KVM-HDMIVMCAC
KVM USB server module	KVM-USB
KVM PS/2 server module	KVM-PS2
KVM USB server module with virtual media	KVM-USBVM
KVM PS/2 server module with virtual media	KVM-PS2VM
KVM USB server module with virtual media and CAC support	KVM-USBVMCAC
KVM serial server module	KVM-SERIAL
KVM to rack PDU power management cable	AP5641
KVM 1U bracket for rear mount behind rack LCD console	KVM-LCDMOUNT
KVM access software license upgrade to enterprise (1,024 nodes)	SEKVM1024N

Cables	2 ft. / 610 mm	3 ft. / 914 mm	6 ft. / 1829 mm	12 ft. / 3658 mm	25 ft. / 7620 mm
KVM USB cable			AP5821 AP5253	AP5822 AP5257	AP5823 AP5261
KVM PS/2 cable		AP5264	AP5250	AP5254	AP5258
KVM daisy-chain cable	AP5262		AP5263		

Rack PDU Series Comparison

Rack Series Comparison

..... Rack PDU Series

Advanced

AP

Premium

PR

Essential

EP

Security & Control

SC

..... Rack Series

Premium

SX

Essential

SV

Soundproof

SP

Wall-mount

WX

2-Post & 4-Post

OF

Seismic, Colo & AV

CM

Custom & Configured

CC

Rugged

RX

Shock Packaging & Pallet

SH

..... Accessories & Upgrades

Airflow & Cabling

AC

Security & Access

SA

..... Index

Product Index

PX



Product Index



NetShelter Rack PDU Advanced Series (11K series)

Voltage	Mounting U-space	Nominal voltage	Available in*	Input circuit	Nominal power	Input plug type**	Output receptacles†	Cord length	Breakers	Model
Metered	Vertical, 0U	230	WW	32 A, 1φ	7.4 kW	IEC-309 32 A	(20) C13/15 (20) 4-in-1	3 m	2	APDU11150ME
	Vertical, 0U	400-415	WW	16 (IEC), 20 (UL) A, 3φ	11.0 (IEC), 11.5 (UL) kW	IEC-309 20 A 3P+N+PE	(21) C13/15 (21) 4-in-1	3 m	0	APDU11250ME
	Vertical, 0U	400-415	WW	32 (IEC), 30 (UL) A, 3φ	22.1 (IEC), 17.3 (UL) kW	IEC-309 30 A 3P+N+PE	(24) C13/15 (24) 4-in-1	3 m	6	APDU11350ME
	Vertical, 0U	400-415	WW	63 (IEC), 60 (UL) A, 3φ	43.5 (IEC), 34.6 (UL) kW	IEC-309 60 A 3P+N+PE	(21) C13/15 (21) 4-in-1	3 m	12	APDU11450ME
	Vertical, 0U	208	NAM	30 (UL) A, 1φ	5.0 (UL) kW	NEMA L6-30P	(20) C13/15 (20) 4-in-1	3 m	2	APDU11151ME
	Vertical, 0U	208	NAM	30 (UL) A, 3φ	8.6 (UL) kW	NEMA L21-30P	(21) C13/15 (21) 4-in-1	3 m	3	APDU11351ME
	Vertical, 0U	208	NAM	50 (UL) A, 3φ	14.4 (UL) kW	CS8365C	(21) C13/15 (21) 4-in-1	3 m	6	APDU11451ME
	Vertical, 0U	208	NAM	60 (UL) A, 3φ	17.3 (UL) kW	IEC-309 60 A 3P+PE	(21) C13/15 (21) 4-in-1	3 m	6	APDU11452ME
Metered -by-Outlet	Vertical, 0U	400-415	WW	32 (IEC), 30 (UL) A, 3φ	22.1 (IEC), 17.3 (UL) kW	IEC-309 32 A 3P+N+PE	(24) C13/15 (24) 4-in-1	3 m	6	APDU11350MO
	Vertical, 0U	208	NAM	60 (UL) A, 3φ	17.3 (UL) kW	IEC-309 60 A 3P+PE	(21) C13/15 (21) 4-in-1	3 m	6	APDU11452MO
Switched	Vertical, 0U	230	WW	32 A, 1φ	7.4 kW	IEC-309 32 A	(20) C13/15 (20) 4-in-1	3 m	2	APDU11150SW
	Vertical, 0U	400-415	WW	16 (IEC), 20 (UL) A, 3φ	11.0 (IEC), 11.5 (UL) kW	IEC-309 20 A 3P+N+PE	(21) C13/15 (21) 4-in-1	3 m	0	APDU11250SW
	Vertical, 0U	400-415	WW	32 (IEC), 30 (UL) A, 3φ	22.1 (IEC), 17.3 (UL) kW	IEC-309 30 A 3P+N+PE	(24) C13/15 (24) 4-in-1	3 m	6	APDU11350SW
	Vertical, 0U	400-415	WW	63 (IEC), 60 (UL) A, 3φ	43.5 (IEC), 34.6 (UL) kW	IEC-309 60 A 3P+N+PE	(21) C13/15 (21) 4-in-1	3 m	12	APDU11450SW
	Vertical, 0U	208	NAM	30 (UL) A, 1φ	5 (UL) kW	NEMA L6-30P	(20) C13/15 (20) 4-in-1	3 m	2	APDU11151SW
	Vertical, 0U	208	NAM	30 (UL) A, 3φ	8.6 (UL) kW	NEMA L21-30P	(24) C13/15 (24) 4-in-1	3 m	3	APDU11351SW
	Vertical, 0U	208	NAM	50 (UL) A, 3φ	14.4 (UL) kW	CS8365C	(21) C13/15 (21) 4-in-1	3 m	6	APDU11451SW
	Vertical, 0U	208	NAM	60 (UL) A, 3φ	17.3 (UL) kW	IEC-309 60 A 3P+PE	(21) C13/15 (21) 4-in-1	3 m	6	APDU11452SW
Metered-by-Outlet with Switching	Vertical, 0U	230	WW	32 A, 1φ	7.4 kW	IEC-309 32 A	(20) C13/15 (20) 4-in-1	3 m	2	APDU11150SM
	Vertical, 0U	400-415	WW	16 (IEC), 20 (UL) A, 3φ	11.0 (IEC), 11.5 (UL) kW	IEC-309 20 A 3P+N+PE	(24) C13/15 (24) 4-in-1	3 m	0	APDU11250SM
	Vertical, 0U	400-415	WW	32 (IEC), 30 (UL) A, 3φ	22.1 (IEC), 17.3 (UL) kW	IEC-309 30 A 3P+N+PE	(24) C13/15 (24) 4-in-1	3 m	6	APDU11350SM
	Vertical, 0U	400-415	WW	63 (IEC), 60 (UL) A, 3φ	43.5 (IEC), 34.6 (UL) kW	IEC-309 60 A 3P+N+PE	(21) C13/15 (21) 4-in-1	3 m	12	APDU11450SM
	Vertical, 0U	208	NAM	30 (UL) A, 1φ	5 (UL) kW	NEMA L6-30P	(20) C13/15 (20) 4-in-1	3 m	2	APDU11151SM
	Vertical, 0U	208	NAM	30 (UL) A, 3φ	8.6 (UL) kW	NEMA L21-30P	(24) C13/15 (24) 4-in-1	3 m	3	APDU11351SM
	Vertical, 0U	208	NAM	50 (UL) A, 3φ	14.4 (UL) kW	CS8365C	(21) C13/15 (21) 4-in-1	3 m	6	APDU11451SM
	Vertical, 0U	208	NAM	60 (UL) A, 3φ	17.3 (UL) kW	IEC-309 60 A 3P+PE	(21) C13/15 (21) 4-in-1	3 m	6	APDU11452SM

Regional availability key: **NAM** = North America; **WW** = Worldwide

*Commercial Reference (CR) availability is generalized and may not cover all countries. **Please check our website to confirm specific CR availability in your country.**

**IEC Input Plug options listed are IP44 plug types; †4-in-1 outlet acts as C13/C15/C19/C21 outlet.

Network Management Card 3 (for NetShelter Rack PDU Advanced 11K Series)

Description	Available in	Model
APC NetShelter Rack PDU Advanced Display Module with Embedded NMC3	WW	APDU9640NMC3
APC NetShelter Rack PDU Advanced Display Module with Embedded NMC3 – Master Pack (QTY 50)	WW	APDU9640NMC3-MP50

Rack PDU Series Comparison

Rack Series Comparison

Rack PDU Series

Advanced

AP

Premium

PR

Essential

EP

Security & Control

SC

Rack Series

Premium

SX

Essential

SV

Soundproof

SP

Wall-mount

WX

2-Post & 4-Post

OF

Seismic, Colo & AV

CM

Custom & Configured

CC

Rugged

RX

Shock Packaging & Pallet

SH

Accessories & Upgrades

Airflow & Cabling

AC

Security & Access

SA

Index

Product Index

PX



Product Index



NetShelter Basic Rack PDUs

Voltage	Mounting U-space	Nominal voltage	Available in	Input circuit	Nominal power	Input plug type	Output receptacles	Cord length	Model
100-120 V input	Vertical, 0U	100-120	NAM, LAM	15 A	1.4 kW	NEMA 5-15P	(14) 5-15	3.6 m	AP9567
	Vertical, 0U	120	NAM	20 A	1.9 kW	NEMA L5-20P	(24) 5-20	3.0 m	AP7530
	Vertical, 0U	100-120	NAM	20 A	1.9 kW	NEMA L5-20P	(14) 5-15	3.6 m	AP9551
	Vertical, 0U	100-120	Japan	20 A	2.0 kW	NEMA L5-20P	(24) 5-15	3.0 m	AP7530J
	Vertical, 0U	120	NAM	30 A	2.9 kW	NEMA L5-30P	(24) 5-20	3.0 m	AP7532
	Vertical, 0U	100	Japan	30 A	3.0 kW	NEMA L5-30P	(24) 5-15	3.0 m	AP7532J
	Horizontal, 1U	100-120	NAM, LAM	15 A	1.4 kW	NEMA 5-15P	(10) 5-15	3.6 m	AP9562
	Horizontal, 1U	100-120	NAM	20 A	1.9 kW	NEMA 5-20P	(10) 5-20	3.6 m	AP9563
	Horizontal, 1U	100-120	NAM	20 A	1.9 kW	NEMA L5-20P	(10) 5-20	3.6 m	AP9564
	Horizontal, 1U	100-120	NAM	30 A	2.9 kW	NEMA L5-30P	(10) 5-20	3.6 m	AP9560
200-240 V input	Vertical, 0U	120-240	Worldwide	10 A	2.3 kW	IEC-320 C14*	(15) C13	2.0 m	AP9568
	Vertical, 0U	120-230	Worldwide	16 A	3.3 kW	IEC-320 C20	(15) C13	2.5 m	AP9572
	Vertical, 0U	230	LAM, EMEA, GCN, APJ	16 A	3.7 kW	IEC-309 16 A	(20) C13 (4) C19	1.0 m	AP7551
	Vertical, 0U	230	Worldwide	16 A	3.7 kW	IEC-320 C20*	(20) C13 (4) C19	3.0 m	AP7552
	Vertical, 0U	230	Worldwide	16 A	3.7 kW	IEC-309 16 A	(20) C13 (4) C19	3.0 m	AP7554
	Vertical, 0U	200-240	NAM	20 A	3.3 kW	NEMA L6-20P	(20) C13 (4) C19	3.0 m	AP7540
	Vertical, 0U	200-240	NAM	30 A	5.0 kW	NEMA L6-30P	(20) C13 (4) C19	3.0 m	AP7541
	Vertical, 0U	230	LAM, EMEA, GCN, APJ	32 A	7.4 kW	IEC-309 32 A	(20) C13 (4) C19	3.0 m	AP7553
	Vertical, 0U	200-240	NAM, APJ, GCN	30 A	5 kW	NEMA L6-30P	(14) C13 (2) C19	3.0 m	AP6002A
	Vertical, 0U	100-240	Worldwide	16 A	3.7 kW	IEC-320 C20*	(14) C13	Inlet	AP6003A
	Vertical, 0U	200-240	Worldwide	32 A	7 kW	IEC-309 32 A	(20) C13 (6) C19	3.0 m	AP6009A
	Horizontal 1U	100-240	Worldwide	15 A	2.9 kW	IEC-320 C14*	(7) C13 (1) C13	Inlet	AP6015A
	Horizontal 1U	100-240	Worldwide	16 A	3.7 kW	IEC-320 C20*	(11) C13 (2) C13	Inlet	AP6020A
	Horizontal 1U	100-240	Worldwide	16 A	3.7 kW	IEC-320 C20*	(5) C13 (2) C19	Inlet	AP6120A
	Horizontal, 1U	120-240	Worldwide	16 A	3.7 kW	IEC-320 C20*	(10) C13 (2) C19	2.5 m	AP9559
	Horizontal, 1U	100-240	Worldwide	16 A	3.7 kW	IEC-320 C20*	(12) C13	2.5 m	AP9565
	Horizontal, 1U	208	NAM, LAM	20 A	3.3 kW	NEMA L6-20P	(12) C13	3.6 m	AP9566
	Horizontal, 1U	200-240	NAM, APJ, GCN	30 A	5.0 kW	NEMA L6-30P	(4) C19	3.66 m	AP6031A
	Horizontal, 1U	208	NAM	30 A	5.0 kW	NEMA L6-30P	(4) C19	3.0 m	AP9570
	Horizontal, 1U	200-240	NAM, LAM	30 A	5.0 kW	NEMA L6-30P	(10) C13	3.6 m	AP9571A
	Horizontal, 2U	230	LAM, EMEA, GCN, APJ	32 A	7.4 kW	Hardwire	(4) C19	8.5 m	AP7585
	Horizontal, 1U	200-240	APJ, EMEA GCN	32 A	7.4 kW	IEC-309 32 A	(4) C19	3.66 m	AP6032A
	Horizontal, 2U	230	LAM, EMEA, GCN, APJ	32 A	7.4 kW	Hardwire	(4) IEC-309 32 A	8.5 m	AP7586

*IEC Input Plug options listed are IP44 plug types.

Rack PDU Series Comparison

Rack Series Comparison

..... Rack PDU Series

Advanced

AP

Premium

PR

Essential

EP

Security & Control

SC

..... Rack Series

Premium

SX

Essential

SV

Soundproof

SP

Wall-mount

WX

2-Post & 4-Post

OF

Seismic, Colo & AV

CM

Custom & Configured

CC

Rugged

RX

Shock Packaging & Pallet

SH

..... Accessories & Upgrades

Airflow & Cabling

AC

Security & Access

SA

..... Index

Product Index

PX



Product Index



NetShelter Basic Rack PDUs (continued)

Voltage	Mounting U-space	Nominal voltage	Available in	Input circuit	Nominal power	Input plug type*	Output receptacles	Cord length	Model
208 V input	Vertical, 0U	208	NAM	20 A, 3 ϕ	5.8 kW	NEMA L21-20P	(42) 5-20	1.0 m	AP7562
	Vertical, 0U	208	NAM	20 A, 3 ϕ	5.8 kW	NEMA L21-20P	(42) 5-20	3.0 m	AP7592
	Vertical, 0U	208	NAM	20 A, 3 ϕ	5.8 kW	NEMA L21-20P	(21) 5-20 (6) L6-20	1.0 m	AP7563
	Vertical, 0U	208	NAM	20 A, 3 ϕ	5.8 kW	NEMA L21-20P	(36) C13 (6) C19	1.0 m	AP7564
	Vertical, 0U	200-240	NAM	50 A, 3 ϕ	12.5 kW	CS8365C	(30) C13 (6) C19	1.0 m	AP7568
	Vertical, 0U	200-240	NAM	50 A, 3 ϕ	12.5 kW	CS8365C	(30) C13 (6) C19	3.0 m	AP7598
	Vertical, 0U	200-240	NAM	50 A, 3 ϕ	14.4 kW	CS8365C	(24) C13 (2) L6-30 (4) C19	1.0 m	AP7569
	Vertical, 0U	200-240	NAM	50 A, 3 ϕ	14.4 kW	CS8365C	(24) C13 (2) L6-30 (4) C19	3.0 m	AP7599
	Vertical, 0U	208	NAM	50 A, 3 ϕ	12.5 kW	CS8365C	(6) C19 (3) C13	1.8 m	AP7567A
	Vertical, 0U	200-240	NAM	60 A	10 kW	IEC-309 60 A	(21) C13 (6) C19	3.0 m	AP6007A
	Horizontal, 1U	200-240	NAM, GCN	60 A	11.6 kW	IEC-309 60 A	(3) C19	3.66 m	AP6039A
	Horizontal, 1U	200-240	APJ, EMEA, GCN	63 A	12.1 kW	IEC-309 63 A	(3) C19	3.66 m	AP6038A
	Horizontal, 1U	200-240	NAM	50 A, 3 ϕ	14.4 kW	CS8365C	(6) C19	2.4 m	AP7516
	Horizontal, 1U	200-240	NAM, GCN	30 A, 3 ϕ	8.6 kW	NEMA L15-30P	(3) C19	3.6 m	AP6037A
400-415 V input	Vertical, 0U	400	LAM, EMEA, GCN, APJ	16 A, 3 ϕ	11 kW	IEC-309 16 A 3P+N+PE	(36) C13 (6) C19	1.0 m	AP7557
	Vertical, 0U	400	LAM, EMEA, GCN, APJ	16 A, 3 ϕ	22 kW	IEC-309 32 A 3P+N+PE	(6) C13 (3) C19	1.8 m	AP7555A
	Vertical, 0U	415	NAM	20 A, 3 ϕ	11.5 kW	IEC-309 20 A 3P+N+PE	(36) C13 (6) C19	1.0 m	AP7557NA
	Horizontal, 1U	400	LAM, EMEA, GCN, APJ	32 A, 3 ϕ	22 kW	IEC-309 32 A 3P+N+PE	(6) C19 (6) C19	2.4 m	AP7526

*IEC Input Plug options listed are IP44 plug types.

Rack PDU Series Comparison

Rack Series Comparison

Rack PDU Series

Advanced

AP

Premium

PR

Essential

EP

Security & Control

SC

Rack Series

Premium

SX

Essential

SV

Soundproof

SP

Wall-mount

WX

2-Post & 4-Post

OF

Seismic, Colo & AV

CM

Custom & Configured

CC

Rugged

RX

Shock Packaging & Pallet

SH

Accessories & Upgrades

Airflow & Cabling

AC

Security & Access

SA

Index

Product Index

PX



Product Index



NetShelter Metered Rack PDUs

Voltage	Mounting U-space	Nominal voltage	Available in	Input circuit	Nominal power	Input plug type*	Output receptacles	Cord length	Model
100–120 V input	Vertical, 0U	100–120	NAM, Japan	15 A	1.4 kW	NEMA 5-15P	(10) 5-15	3.0 m	AP8831
	Vertical, 0U	100–120	NAM	20 A	1.9 kW	NEMA L5-20P	(24) 5-20	3.0 m	AP8830
	Vertical, 0U	100–120	Japan	20 A	2.0 kW	NEMA L5-20P	(24) 5-15	3.0 m	AP8830J
	Vertical, 0U	100–120	Japan	20 A	1.9 kW	NEMA L5-20P	(10) 5-15	3.0 m	AP8833J
	Vertical, 0U	100–120	NAM, Japan	30 A	2.9 kW	NEMA L5-30P	(24) 5-20	3.0 m	AP8832
	Vertical, 0U	100–120	Japan	30 A	2.4 kW	NEMA L5-30P	(24) 5-15	3.0 m	AP8832J
	Horizontal, 1U	120	NAM, LAM	15 A	1.4 kW	NEMA 5-15P	(8) 5-20	3.6 m	AP7800B
	Horizontal, 1U	120	NAM, LAM	20 A	1.9 kW	NEMA L5-20P	(8) 5-20	3.6 m	AP7801B
	Horizontal, 2U	120	NAM, LAM	30 A	2.9 kW	NEMA L5-30P	(16) 5-20	3.6 m	AP7802B
	Horizontal, 2U	100	Japan	30 A	3.0 kW	NEMA L5-30P	(16) 5-15	3.6 m	AP7802BJ
200–240 V input	Vertical, 0U	230	Worldwide	10/12 A	2.3 kW	IEC-320 C14	(16) C13	3.0 m	AP7850B
	Vertical, 0U	100–240	Worldwide	16 A	3.3 kW	IEC-320 C20*	(18) C13 (2) C19 Inlet	3.0 m	AP8858
	Vertical, 0U	100–240	EMEA, APJ	16 A	3.7 kW	IEC-309 16 A	(18) C13 (2) C19	3.0 m	AP8858EU3
	Vertical, 0U	100–240	NAM, LAM, GCN, APJ	20 A	3.3 kW	NEMA L6-20P	(18) C13 (2) C19	3.0 m	AP8858NA3
	Vertical, 0U	200–240	NAM, Japan, LAM	30 A	5.0 kW	NEMA L6-30P	(36) C13 (6) C19	3.0 m	AP8841
	Vertical, 0U	208	NAM	30 A	5.8 kW	NEMA L14-30P	(16) 5-20 (2) C19 (12) C13	3.0 m	AP8870
	Vertical, 0U	220–240	LAM, EMEA, GCN, APJ	32 A	7.4 kW	IEC-309 32 A	(36) C13 (6) C19	3.0 m	AP8853
	Horizontal, 1U	100–240	Worldwide	10/12 A	2.5 kW	IEC-320 C14*	(8) C13 Inlet	3.6 m	AP7820B
	Horizontal, 1U	100–240	Worldwide	16 A	3.3 kW	IEC-320 C20*	(8) C13 Inlet	3.6 m	AP7821B
	Horizontal, 2U	200–240	NAM	30 A	5.0 kW	NEMA L6-30P	(12) C13 (4) C19	3.6 m	AP7811B
Horizontal, 2U	230	LAM, EMEA, GCN, APJ	32 A	7.4 kW	IEC-309 32 A	(12) C13 (4) C19	3.6 m	AP7822B	
208 V input	Vertical, 0U	208	NAM	20 A, 3φ	5.7 kW	NEMA L21-20P	(36) 5-20	3.0 m	AP8862
	Vertical, 0U	208	NAM	20 A, 3φ	5.7 kW	NEMA L21-20P	(24) 5-20 (6) L6-20	3.0 m	AP8863
	Vertical, 0U	208	NAM	20 A, 3φ	5.7 kW	NEMA L21-20P	(36) C13 (2) 5-20 (6) C19	1.8 m	AP8861
	Vertical, 0U	208	NAM	30 A, 3φ	8.6 kW	NEMA L21-30P	(36) C13 (2) 5-20 (6) C19	1.8 m	AP8865
	Vertical, 0U	200–240	NAM	50 A, 3φ	10.0 kW	CS8365C	(36) C13 (6) C19	1.8 m	AP8868
	Vertical, 0U	200–240	NAM	50 A, 3φ	14.4 kW	CS8365C	(24) C13 (2) L6-30 (4) C19	3.0 m	AP7869B
	Vertical, 0U	200–240	NAM	50 A, 3φ	14.4 kW	CS8365C	(24) C13 (2) L6-30 (4) C19	3.0 m	AP7899B
	Vertical, 0U	200–240	NAM	60 A, 3φ	17.3 kW	IEC-309 60 A 3P+PE	(12) C19 (4) C13	1.8 m	AP8866
	Vertical, 0U	200–240	NAM	60 A, 3φ	17.3 kW	IEC-309 60 A 3P+PE	(30) C13	1.8 m	AP8867
400–415 V input	Vertical, 0U	400–415	Worldwide	16 A, 3φ	11 kW	IEC-309 16 A 3P+N+PE	(36) C13 (6) C19	1.8 m	AP8881
	Vertical, 0U	415	NAM	30 A, 3φ	17.3 kW	IEC-309 30 A 3P+N+PE	(12) C19 (30) C13	1.8 m	AP8887
	Vertical, 0U	400	LAM, EMEA, GCN, APJ	32 A, 3φ	22 kW	IEC-309 32 A 3P+N+PE	(12) C19 (30) C13	1.8 m	AP8886
	Vertical, 0U	415	NAM	40 A, 3φ	23 kW	IEC-309 60 A 3P+N+PE	(12) C19 (30) C13	1.8 m	AP8888

*IEC Input Plug options listed are IP44 plug types.

Rack PDU Series Comparison

Rack Series Comparison

..... Rack PDU Series

Advanced

AP

Premium

PR

Essential

EP

Security & Control

SC

..... Rack Series

Premium

SX

Essential

SV

Soundproof

SP

Wall-mount

WX

2-Post & 4-Post

OF

Seismic, Colo & AV

CM

Custom & Configured

CC

Rugged

RX

Shock Packaging & Pallet

SH

..... Accessories & Upgrades

Airflow & Cabling

AC

Security & Access

SA

..... Index

Product Index

PX



Product Index



NetShelter Metered-by-Outlet Rack PDUs

Voltage	Mounting U-space	Nominal voltage	Available in	Input circuit	Nominal power	Input plug type*	Output receptacles	Cord length	Model
100–120 V input	Vertical, 0U	100–240	Worldwide	16 A	3.3 kW	IEC-320 C20*	(21) C13 (3) C19	3.0 m	AP8459WW
200–240 V input	Vertical, 0U	200–240	NAM, Japan, LAM	20 A	3.3 kW	NEMA L6-20P	(21) C13 (3) C19	3.0 m	AP8459NA3
	Vertical, 0U	200–240	LAM, EMEA, GCN, APJ	16 A	3.7 kW	IEC-309 16 A	(21) C13 (3) C19	3.0 m	AP8459EU3
	Vertical, 0U	200–240	NAM, Japan, LAM	30 A	5.0 kW	NEMA L6-30P	(21) C13 (3) C19	3.0 m	AP8441
	Vertical, 0U	200–240	LAM, EMEA, GCN, APJ	32 A	7.4 kW	IEC-309 32 A	(21) C13 (3) C19	3.0 m	AP8453
208 V input	Vertical, 0U	208	NAM	20 A, 3φ	5.7 kW	NEMA L21-20P	(21) C13 (3) C19	1.8 m	AP8461
400–415 V input	Vertical, 0U	400–415	Worldwide	16 A, 3φ	11 kW	IEC-309 16 A 3P+N+PE	(21) C13 (3) C19	1.8 m	AP8481

NetShelter Switched Rack PDUs

Voltage	Mounting U-space	Nominal voltage	Available in	Input circuit	Nominal power	Input plug type*	Output receptacles	Cord length	Model
100–120 V input	Vertical, 0U	100–120	NAM, Japan	15 A	1.4 kW	NEMA 5-15P	(8) 5-15	3.0 m	AP8931
	Vertical, 0U	120	NAM	20 A	1.9 kW	NEMA L5-20P	(24) 5-20	3.0 m	AP8930
	Vertical, 0U	100	Japan	20 A	1.9 kW	NEMA L5-20P	(24) 5-15	3.0 m	AP8930J
	Vertical, 0U	120	NAM, Japan	30 A	2.9 kW	NEMA L5-30P	(24) 5-20	3.0 m	AP8932
	Horizontal, 1U	100–120	NAM, LAM	15 A	1.4 kW	NEMA 5-15P	(8) 5-15	3.6 m	AP7900B
	Horizontal, 1U	100–120	NAM	20 A	1.9 kW	NEMA L5-20P	(8) 5-20	3.6 m	AP7901B
	Horizontal, 2U	120	NAM	30 A	2.9 kW	NEMA L5-30P	(16) 5-20	3.6 m	AP7902B
	Horizontal, 2U	100	Japan	32 A	3.0 kW	NEMA L5-30P	(16) 5-15	3.6 m	AP7902BJ
200–240 V input	Vertical, 0U	230	EMEA, GCN, APJ	10 A	2.3 kW	IEC-320 C14*	(16) C13	3.0 m	AP7950B
	Vertical, 0U	100–240	NAM, LAM	20 A	3.3 kW	NEMA L6-20P	(7) C13 (1) C19	3.0 m	AP8958NA3
	Vertical, 0U	100–240	Worldwide	16 A	3.3 kW	IEC-320 C20*	(7) C13 (1) C19	Inlet	AP8958
	Vertical, 0U	230	LAM, EMEA, GCN, APJ	16 A	3.7 kW	IEC-309 16 A	(7) C13 (1) C19	3.0 m	AP8958EU3
	Vertical, 0U	100–240	NAM, LAM	20 A	3.3 kW	NEMA L6-20P	(21) C13/15 (3) C19/21	3.0 m	APDU9959NA3
	Vertical, 0U	100–240	Worldwide	16 A	3.3 kW	NEMA L6-20P	(21) C13/15 (3) C19/21	3.0 m	APDU9959J
	Vertical, 0U	230	LAM, EMEA, GCN, APJ	16 A	3.7 kW	IEC-309 16 A	(21) C13 (3) C19	3.0 m	APDU9959EU3
	Vertical, 0U	200–240	NAM, LAM	30 A	5.0 kW	NEMA L6-30P	(21) C13/15 (3) C19/21	3.0 m	APDU9941
	Vertical, 0U	120–208	NAM	30 A	5.8 kW	NEMA L14-30P	(16) 5-20 (7) C13/15 (1) C19/21	3.0 m	APDU9970
	Vertical, 0U	220–240	LAM, EMEA, GCN, APJ	32 A	7.4 kW	IEC-309 32 A	(21) C13 (3) C19	3.0 m	APDU9953
	Horizontal, 1U	208–230	Worldwide	10/12 A	2.5 kW	IEC-320 C14*	(8) C13	2.0 m	AP7920B
	Horizontal, 1U	208–230	Worldwide	16 A	3.3 kW	IEC-320 C20*	(8) C13	2.4 m	AP7921B
	Horizontal, 2U	200–240	NAM	30 A	5.0 kW	NEMA L6-30P	(16) C13	3.6 m	AP7911B
	Horizontal, 2U	230	LAM, EMEA, GCN, APJ	32 A	7.4 kW	IEC-309 32 A	(16) C13	3.0 m	AP7922B
208 V input	Vertical, 0U	208	NAM	20 A, 3φ	5.7 kW	NEMA L21-20P	(21) C13/15 (3) C19/21	1.8 m	APDU9961
	Vertical, 0U	208	NAM	20 A, 3φ	6.0 kW	NEMA L21-20P	(24) 5-20	3.0 m	AP8962
	Vertical, 0U	208	NAM	30 A, 3φ	8.6 kW	NEMA L21-30P	(21) C13/15 (3) C19/21	1.8 m	APDU9965
	Vertical, 0U	208	NAM	60 A, 3φ	17.3 kW	IEC-309 60 A 3P+PE	(20) C13/15 (12) C19/21	2.0 m	APDU9966
	Vertical, 0U	208	NAM	60 A	17.3 kW	IEC-309 60 A 3P+PE	(42) C13/15 (6) C19/21	2.0 m	APDU9967
	Vertical, 0U	200–240	NAM	50 A, 3φ	12.5 kW	CS8365C	(21) C13 (3) C19	1.0 m	AP7968B
	Vertical, 0U	200–240	NAM	50 A, 3φ	12.5 kW	CS8365C	(21) C13 (3) C19	3.0 m	AP7998B
400–415 V input	Vertical, 0U	415	NAM	16 A, 3φ	11.1 kW	IEC-309 16 A 3P+N+PE	(21) C13/15 (3) C19/21	1.8 m	APDU9981NA3
	Vertical, 0U	400	Worldwide	16 A, 3φ	11.1 kW	IEC-309 16 A 3P+N+PE	(21) C13 (3) C19	1.8 m	APDU9981EU3

*IEC Input Plug options listed are IP44 plug types.. **Remote switching control available through EcoStruxure IT Expert.

Rack PDU Series Comparison

Rack Series Comparison

..... Rack PDU Series

Advanced

AP

Premium

PR

Essential

EP

Security & Control

SC

..... Rack Series

Premium

SX

Essential

SV

Soundproof

SP

Wall-mount

WX

2-Post & 4-Post

OF

Seismic, Colo & AV

CM

Custom & Configured

CC

Rugged

RX

Shock Packaging & Pallet

SH

..... Accessories & Upgrades

Airflow & Cabling

AC

Security & Access

SA

..... Index

Product Index

PX



Product Index



NetShelter Metered-by-Outlet with Switching Rack PDUs

Voltage	Mounting U-space	Nominal voltage	Available in	Input circuit	Nominal power	Input plug type*	Output receptacles	Cord length	Model
100–120 V input	Vertical, 0U	100–120	NAM, Japan	30 A	2.9 kW	NEMA L5-30P	(2) C13 (3) C19	3.0 m	AP8632
	Vertical, 0U	208	NAM	20 A	3.3 kW	NEMA L6-20P	(2) C13 (3) C19	3.0 m	AP8659NA3
200–240 V input	Vertical, 0U	100–240	Worldwide	20 A	3.3 kW	IEC-320 C20*	(2) C13 (3) C19	Inlet	AP8659
	Vertical, 0U	230	LAM, EMEA, GCN, APJ	16 A	3.7 kW	IEC-309 16	(2) C13 (3) C19	3.0 m	AP8659EU3
	Vertical, 0U	200–240	NAM, Japan, LAM	30 A	5.0 kW	NEMA L6-30P	(2) C13 (3) C19	3.0 m	AP8641
	Vertical, 0U	220–240	LAM, EMEA, GCN, APJ	32 A	7.4 kW	IEC-309 32 A	(2) C13 (3) C19	3.0 m	AP8653
208 V input	Vertical, 0U	208	NAM	20 A, 3φ	5.7 kW	NEMA L21-20P	(2) C13 (3) C19	1.8 m	AP8461
400–415 V input	Vertical, 0U	400–415	Worldwide	16 A, 3φ	11 kW	IEC-309 16 A 3P+N+PE	(2) C13 (3) C19	1.8 m	AP8481

*IEC Input Plug options listed are IP44 plug types.. **Remote switching control available through EcoStruxure IT Expert.

Easy Basic Rack PDUs

(Only sold outside of North America and Japan)



Voltage	Mounting U-space	Nominal voltage	Available in	Input circuit	Nominal power	Input plug type	Output receptacles	Cord length	Model
230 V	Vertical, 1U	230	EMEA	10 A	2.3 kW	IEC-320 C14	(6) Schuko CEE 7 (1) C13	2.5 m	EPDU1010B-SCH
	Vertical, 1U	230	LAM, EMEA, APAC, GCN	16 A	3.6 kW	IEC-320 C20	(8) C13	2.5 m	EPDU1016B
	Vertical, 0U	230	LAM, EMEA, APAC, GCN	16 A	3.6 kW	IEC 309 16A 2P+E	(20) C13 (4) C19	3 m	EPDU1116B
	Vertical, 0U	230	EMEA	16 A	3.6 kW	Schuko CEE 7/EU 1-16P	(14) Schuko CEE 7	3 m	EPDU1116B-SCH
	Vertical, 0U	230	LAM, EMEA, APAC, GCN	32 A	7.3 kW	IEC 309 32A 2P+E	(20) C13 (4) C19	3 m	EPDU1132B
	Vertical, 0U	230	EMEA	32 A	7.3 kW	IEC 309 32A 2P+E	(21) Schuko CEE 7	3 m	EPDU1132B-SCH
400V, 3PH	Vertical, 0U	400, 3PH	LAM, EMEA, APAC, GCN	16 A	11 kW	IEC 309 16A 3P+N+E	(36) C13 (6) C19	2 m	EPDU1216B
	Vertical, 0U	400, 3PH	LAM, EMEA, APAC, GCN	32 A	22 kW	IEC 309 32A 3P+N+E	(30) C13 (12) C19	2 m	EPDU1232B

Easy Metered Rack PDUs

(Only sold outside of North America and Japan)

Voltage	Mounting U-space	Nominal voltage	Available in	Input circuit	Nominal power	Input plug type	Output receptacles	Cord length	Model
230 V	Horizontal, 1U	230	LAM, EMEA, APAC, GCN	16 A	3.6 kW	IEC-320 C20	(8) C13	2.5 m	EPDU1016M
	Vertical, 0U	230	LAM, EMEA, APAC, GCN	16 A	3.6 kW	IEC 309 16A 2P+E	(18) C13 (3) C19	3 m	EPDU1116M
	Vertical, 0U	230	LAM, EMEA, APAC, GCN	32 A	7.3 kW	IEC 309 32A 2P+E	(20) C13 (4) C19	3 m	EPDU1132M
400V, 3PH	Vertical, 0U	400, 3PH	LAM, EMEA, APAC, GCN	16 A	11 kW	IEC 309 16A 3P+N+E	(21) C13 (3) C19	2 m	EPDU1216M
	Vertical, 0U	400, 3PH	LAM, EMEA, APAC, GCN	32 A	22 kW	IEC 309 32A 3P+N+E	(18) C13 (6) C19	2 m	EPDU1232M

Rack PDU Series Comparison

Rack Series Comparison

..... Rack PDU Series

Advanced

AP

Premium

PR

Essential

EP

Security & Control

SC

..... Rack Series

Premium

SX

Essential

SV

Soundproof

SP

Wall-mount

WX

2-Post & 4-Post

OF

Seismic, Colo & AV

CM

Custom & Configured

CC

Rugged

RX

Shock Packaging & Pallet

SH

..... Accessories & Upgrades

Airflow & Cabling

AC

Security & Access

SA

..... Index

Product Index

PX



Product Index



Easy Switched Rack PDUs

(Only sold outside of North America and Japan)

Voltage	Mounting U-space	Nominal voltage	Region	Input circuit	Nominal power	Input plug type	Output receptacles	Cord length	Model
230 V	Horizontal, 1U	230	LAM, EMEA, APAC, GCN	16 A	3.6 kW	IEC-320 C20	(8) C13	2.5 m	EPDU1016S
	Vertical, 0U	230	LAM, EMEA, APAC, GCN	16 A	3.6 kW	IEC 309 16A 2P+E	(20) C13 (4) C19	3 m	EPDU1116S
	Vertical, 0U	230	LAM, EMEA, APAC, GCN	32 A	7.3 kW	IEC 309 32A 2P+E	(20) C13 (4) C19	3 m	EPDU1132S
400V, 3PH	Vertical, 0U	230	LAM, EMEA, APAC, GCN	16 A	7.3 kW	IEC 309 16A 3P+N+E	(21) C13 (6) C19	2 m	EPDU1216S
	Vertical, 0U	230	LAM, EMEA, APAC, GCN	32 A	22 kW	IEC 309 32A 3P+N+E	(18) C13 (30) C19	2 m	EPDU1232S
	Vertical, 0U	230	LAM, EMEA, APAC, GCN	32 A	22 kW	IEC 309 32A 3P+N+E	(30) C13 (6) C19	2 m	EPDU1232SX3620

Easy Metered-by-Outlet Rack PDUs

(Only sold outside of North America and Japan)

Voltage	Mounting U-space	Nominal voltage	Region	Input circuit	Nominal power	Input plug type	Output receptacles	Cord length	Model
230 V	Vertical, 0U	230	LAM, EMEA, APAC, GCN	16 A	3.6 kW	IEC 309 16A 2P+E	(20) C13 (4) C19	3 m	EPDU2116MBO
	Vertical, 0U	230	LAM, EMEA, APAC, GCN	32 A	7.3 kW	IEC 309 32A 2P+E	(20) C13 (4) C19	3 m	EPDU2132MBO
400V, 3PH	Vertical, 0U	400, 3PH	LAM, EMEA, APAC, GCN	16 A	11 kW	IEC 309 16A 3P+N+PE	(18) C13 (6) C19	3 m	EPDU2216MBO
	Vertical, 0U	400, 3PH	LAM, EMEA, APAC, GCN	32 A	22 kW	IEC 309 32A 3P+N+PE	(18) C13 (6) C19	3 m	EPDU2232MBO

Easy Metered-by-Outlet with Switching Rack PDUs

(Only sold outside of North America and Japan)

Voltage	Mounting U-space	Nominal voltage	Region	Input circuit	Nominal power	Input plug type	Output receptacles	Cord length	Model
230 V	Vertical, 0U	230	LAM, EMEA, APAC, GCN	16 A	3.6 kW	IEC 309 16A 2P+E	(20) C13 (4) C19	3 m	EPDU2116SMBO
	Vertical, 0U	230	LAM, EMEA, APAC, GCN	32 A	7.3 kW	IEC 309 32A 2P+E	(20) C13 (4) C19	3 m	EPDU2132SMBO
400V, 3PH	Vertical, 0U	400, 3PH	LAM, EMEA, APAC, GCN	16 A	11 kW	IEC 309 16A 3P+N+PE	(18) C13 (6) C19	3 m	EPDU2216SMBO
	Vertical, 0U	400, 3PH	LAM, EMEA, APAC, GCN	32 A	22 kW	IEC 309 32A 3P+N+PE	(18) C13 (6) C19	3 m	EPDU2232SMBO

Rack PDU Series Comparison

Rack Series Comparison

..... Rack PDU Series

Advanced

AP

Premium

PR

Essential

EP

Security & Control

SC

..... Rack Series

Premium

SX

Essential

SV

Soundproof

SP

Wall-mount

WX

2-Post & 4-Post

OF

Seismic, Colo & AV

CM

Custom & Configured

CC

Rugged

RX

Shock Packaging & Pallet

SH

..... Accessories & Upgrades

Airflow & Cabling

AC

Security & Access

SA

..... Index

Product Index

PX



Product Index

Premium Server Racks
NetShelter SX Enclosures



	Model (Black)	Available in*		Model (White)	Available in*		Rack Units	Dimensions (mm)			Max Equipment Depth (mm)	Static (lb.)	Dynamic (lb.)	Shipping (lb.)	0U Accessory Channels	Doors & Sides			
		NAM	EUR		NAM	EUR		H	W	D									
NetShelter SX (latest generation)	Server Racks	AR3100B2	NAM	EUR	AR3100W2	NAM	EUR	42	1991	600	1070	915	4000	2250	-	2	✓		
		AR3150B2	NAM	EUR	AR3150W2	NAM	EUR	42	1991	750	1070	915	4000	2250	-	2	✓		
		AR3300B2	NAM	EUR	AR3300W2	NAM	EUR	42	1991	600	1200	1048	4000	2250	-	4	✓		
		AR3350B2	NAM	EUR	AR3350W2	NAM	EUR	42	1991	750	1200	1048	4000	2250	-	4	✓		
		AR3180B2	NAM	EUR	-	-	-	-	42	1991	800	1070	915	4000	2250	-	2	✓	
		AR3380B2	NAM	EUR	AR3380W2	EUR	EUR	EUR	42	1991	800	1200	1048	4000	2250	-	4	✓	
		AR3105B2	NAM	EUR	AR3105W2	NAM	EUR	EUR	45	2124	600	1070	915	4000	2250	-	2	✓	
		AR3155B2	NAM	EUR	AR3155W2	NAM	EUR	EUR	45	2124	750	1070	915	4000	2250	-	2	✓	
		AR3305B2	NAM	EUR	AR3305W2	NAM	EUR	EUR	45	2124	600	1200	1048	4000	2250	-	4	✓	
		AR3355B2	NAM	EUR	AR3355W2	NAM	EUR	EUR	45	2124	750	1200	1048	4000	2250	-	4	✓	
		AR3107B2	NAM	EUR	-	-	-	-	48	2258	600	1070	915	4000	2250	-	2	✓	
		AR3157B2	NAM	EUR	-	-	-	-	48	2258	750	1070	915	4000	2250	-	2	✓	
		AR3307B2	NAM	EUR	AR3307W2	NAM	EUR	EUR	48	2258	600	1200	1048	4000	2250	-	4	✓	
		AR3357B2	NAM	EUR	AR3357W2	NAM	EUR	EUR	48	2258	750	1200	1048	4000	2250	-	4	✓	
		AR3387B2	NAM	EUR	AR3387W2	EUR	EUR	EUR	48	2258	800	1200	1048	4000	2250	-	4	✓	
		AR3187B2	NAM	EUR	-	-	-	-	48	2258	800	1070	915	4000	2250	-	2	✓	
		AR3308B2	NAM	EUR	AR3308W2	NAM	EUR	EUR	52	2436	600	1200	1048	4000	2250	-	2	✓	
		AR3358B2	NAM	EUR	AR3358W2	EUR	EUR	EUR	52	2436	750	1200	1048	4000	2250	-	2	✓	
		AR3388B2	NAM	EUR	AR3388W2	EUR	EUR	EUR	52	2436	800	1200	1048	4000	2250	-	4	✓	
		NetShelter SX (latest generation)	Networking	AR3140B2	NAM	EUR	-	-	-	42	1991	750	1070	915	4000	2250	-	2	✓
AR3340B2	NAM			EUR	AR3340W2	NAM	EUR	EUR	42	1991	750	1200	1048	4000	2250	-	4	✓	
AR3347B2	NAM			EUR	-	-	-	-	48	2258	750	1200	1048	4000	2250	-	4	✓	
NetShelter SX (latest generation)	Colo	AR3200B2	NAM	EUR	-	-	-	20 (x2)	1991	600	1070	915	4000	2250	-	0	✓		
NetShelter SX (original)	Server Racks	AR3003	WW	WW	-	-	-	12	658	600	889	756	600	600	-	2	✓		
		AR3103	WW	WW	-	-	-	12	658	600	1070	921	600	600	-	2	✓		
		AR3006	WW	WW	-	-	-	-	18	925	600	889	756	900	900	-	2	✓	
		AR3106	WW	WW	-	-	-	-	18	925	600	1070	921	900	900	-	2	✓	
		AR3104	WW	WW	-	-	-	-	24	1198	600	1070	915	3000	2250	-	2	✓	
		AR3100TAA**	NAM	WW	-	-	-	42	1991	600	1070	915	3750	2250	-	2	✓		
		AR3105TAA**	NAM	WW	-	-	-	45	2124	600	1070	915	3750	2250	-	2	✓		
		-	-	WW	AR3107W	WW	WW	WW	48	2258	600	1070	915	3750	2250	-	2	✓	
		AR3107TAA**	NAM	WW	-	-	-	48	2258	600	1070	915	3750	2250	-	2	✓		
		-	-	WW	AR3157W	WW	WW	WW	48	2258	750	1070	915	3750	2250	-	2	✓	
	AR3158	WW	WW	-	-	-	-	52	2436	750	1070	915	3750	2250	-	2	✓		
	NetShelter SX (original)	Shock Packaged	AR3100SP	WW	WW	-	-	-	42	1991	600	1070	915	3750	2250	2000	2	✓	
			AR3150SP	WW	WW	-	-	-	42	1991	750	1070	915	3750	2250	2000	2	✓	
			AR3300SP	WW	WW	AR3300WSP	WW	WW	WW	42	1991	600	1200	1048	3750	2250	2000	4	✓
			AR3350SP	WW	WW	AR3350WSPX832	WW	WW	WW	42	1991	750	1200	1048	3750	2250	2000	4	✓
			AR3105SP	WW	WW	-	-	-	45	2124	600	1070	915	3750	2250	2000	2	✓	
			AR3155SP	WW	WW	-	-	-	45	2124	750	1070	915	3750	2250	2000	2	✓	
			AR3305SP	WW	WW	-	-	-	45	2124	600	1200	1048	3750	2250	2000	4	✓	
			AR3355SP	WW	WW	-	-	-	45	2124	750	1200	1048	3750	2250	2000	4	✓	
			AR3107SP	WW	WW	-	-	-	48	2258	600	1070	915	3750	2250	2000	2	✓	
AR3157SP			WW	WW	AR3157WSP	WW	WW	WW	48	2258	750	1070	915	3750	2250	2000	2	✓	
AR3307SP	WW	WW	AR3307WSP	WW	WW	WW	48	2258	600	1200	1048	3750	2250	2000	4	✓			
AR3357SP	WW	WW	-	-	-	-	48	2258	750	1200	1048	3750	2250	2000	4	✓			

Regional availability key: **NAM** = North America; **EUR** = Europe; **WW** = Worldwide

*Commercial Reference (CR) availability is generalized and may not cover all countries. Please check our website to confirm specific CR availability in your country.

**TAA compliant model. All NetShelter products listed are UL, ISTA, RoHS, and REACH certified.

Rack PDU Series Comparison

Rack Series Comparison

..... Rack PDU Series

Advanced

AP

Premium

PR

Essential

EP

Security & Control

SC

..... Rack Series

Premium

SX

Essential

SV

Soundproof

SP

Wall-mount

WX

2-Post & 4-Post

OF

Seismic, Colo & AV

CM

Custom & Configured

CC

Rugged

RX

Shock Packaging & Pallet

SH

..... Accessories & Upgrades

Airflow & Cabling

AC

Security & Access

SA

..... Index

Product Index

PX



Product Index

Premium Server Racks

NetShelter SX Enclosures (Configured—Doors and Side Panels)



Model	Rack Units	Height (mm)	Width (mm)	Depth (mm)	Max Equipment Depth (mm)	Static Load (kg / lb.)	Dynamic Load (kg / lb.)	Doors	Sides
AR3100B2X609	42	1991	600	1070	915	1814 / 4000	1021 / 2250	✓	✗
AR3100B2X610	42	1991	600	1070	915	1814 / 4000	1021 / 2250	✗	✓
AR3100B2X617	42	1991	600	1070	915	1814 / 4000	1021 / 2250	✗	✗
AR3150B2X609	42	1991	750	1070	915	1814 / 4000	1021 / 2250	✓	✗
AR3150B2X610	42	1991	750	1070	915	1814 / 4000	1021 / 2250	✗	✓
AR3150B2X617	42	1991	750	1070	915	1814 / 4000	1021 / 2250	✗	✗
AR3300B2X609	42	1991	600	1200	1048	1814 / 4000	1021 / 2250	✓	✗
AR3300B2X610	42	1991	600	1200	1048	1814 / 4000	1021 / 2250	✗	✓
AR3300B2X617	42	1991	600	1200	1048	1814 / 4000	1021 / 2250	✗	✗
AR3350B2X609	42	1991	750	1200	1048	1814 / 4000	1021 / 2250	✓	✗
AR3350B2X610	42	1991	750	1200	1048	1814 / 4000	1021 / 2250	✗	✓
AR3350B2X617	42	1991	750	1200	1048	1814 / 4000	1021 / 2250	✗	✗
AR3107B2X609	48	2258	600	1070	915	1814 / 4000	1021 / 2250	✓	✗
AR3107B2X610	48	2258	600	1070	915	1814 / 4000	1021 / 2250	✗	✓
AR3107B2X617	48	2258	600	1070	915	1814 / 4000	1021 / 2250	✗	✗
AR3157B2X609	48	2258	750	1070	915	1814 / 4000	1021 / 2250	✓	✗
AR3157B2X610	48	2258	750	1070	915	1814 / 4000	1021 / 2250	✗	✓
AR3157B2X617	48	2258	750	1070	915	1814 / 4000	1021 / 2250	✗	✗
AR3307B2X609	48	2258	600	1200	1048	1814 / 4000	1021 / 2250	✓	✗
AR3307B2X610	48	2258	600	1200	1048	1814 / 4000	1021 / 2250	✗	✓
AR3307B2X617	48	2258	600	1200	1048	1814 / 4000	1021 / 2250	✗	✗
AR3357B2X609	48	2258	750	1200	1048	1814 / 4000	1021 / 2250	✓	✗
AR3357B2X610	48	2258	750	1200	1048	1814 / 4000	1021 / 2250	✗	✓
AR3357B2X617	48	2258	750	1200	1048	1814 / 4000	1021 / 2250	✗	✗

Premium Server Racks

NetShelter SX Advanced Enclosures



	Model (Black)	Available in*		Rack Units	Dimensions (mm)			Max Equipment Depth (mm)	Static (lb.)	Dynamic (lb.)	Shipping (lb.)	0U Accessory Channels	Doors & Sides
					H	W	D						
NetShelter SX Advanced High Strength & Shock Packaged	AR9557SPB2	WW		48	2258	750	1295	1143	4250	3500	3500	4	✓
	AR9587SPB2	WW		48	2258	800	1295	1143	4250	3500	3500	4	✓
	AR9657SPB2	WW		48	2258	750	1470	1318	4250	3500	3500	4	✓
	AR9558SPB2	NAM	EUR	52	2436	750	1295	1143	4250	3500	3500	4	✓
	AR9588SPB2	NAM	EUR	52	2436	800	1295	1143	4250	3500	3500	4	✓
	AR9658SPB2	NAM	EUR	52	2436	750	1470	1318	4250	3500	3500	4	✓
	AR9000RAMPX886	WW		Metal ramp, reusable 30 times, order as accessory									

Regional availability key: **NAM** = North America; **EUR** = Europe; **WW** = Worldwide

*Commercial Reference (CR) availability is generalized and may not cover all countries. Please check our website to confirm specific CR availability in your country.

Rack PDU Series Comparison

Rack Series Comparison

..... Rack PDU Series

Advanced

AP

Premium

PR

Essential

EP

Security & Control

SC

..... Rack Series

Premium

SX

Essential

SV

Soundproof

SP

Wall-mount

WX

2-Post & 4-Post

OF

Seismic, Colo & AV

CM

Custom & Configured

CC

Rugged

RX

Shock Packaging & Pallet

SH

..... Accessories & Upgrades

Airflow & Cabling

AC

Security & Access

SA

..... Index

Product Index

PX



Product Index



Premium Server Racks

NetShelter SX Server Enclosures (Shock Packaging)

Model (Black)	Model (White)	Rack Units	Height (mm)	Width (mm)	Depth (mm)	Max Equipment Depth (mm)	Static Load (kg / lb.)	Dynamic Load (kg / lb.)	Shippable (kg / lb.)	Doors	Sides
AR3003SP	-	12	658	600	889	756	272 / 600	272 / 600	272 / 600	✓	✓
AR3103SP	-	12	658	600	1070	921	272 / 600	272 / 600	272 / 600	✓	✓
AR3006SP	-	18	925	600	889	756	408 / 900	408 / 900	408 / 900	✓	✓
AR3106SP	-	18	925	600	1070	921	408 / 900	408 / 900	408 / 900	✓	✓
AR3104SP1	-	24	1198	600	1070	915	1361 / 3000	1021 / 2250	907 / 2000	✓	✓
AR3100SP	-	42	1991	600	1070	915	1701 / 3750	1021 / 2250	907 / 2000	✓	✓
AR3150SP	-	42	1991	750	1070	915	1701 / 3750	1021 / 2250	907 / 2000	✓	✓
AR3300SP	AR3300WSP	42	1991	600	1200	1048	1701 / 3750	1021 / 2250	907 / 2000	✓	✓
AR3350SP	AR3350WSPX832	42	1991	750	1200	1048	1701 / 3750	1021 / 2250	907 / 2000	✓	✓
AR3105SP	-	45	2124	600	1070	915	1701 / 3750	1021 / 2250	907 / 2000	✓	✓
AR3155SP	-	45	2124	750	1070	915	1701 / 3750	1021 / 2250	907 / 2000	✓	✓
AR3305SP	-	45	2124	600	1200	1048	1701 / 3750	1021 / 2250	907 / 2000	✓	✓
AR3355SP	-	45	2124	750	1200	1048	1701 / 3750	1021 / 2250	907 / 2000	✓	✓
AR3107SP	-	48	2258	600	1070	915	1701 / 3750	1021 / 2250	907 / 2000	✓	✓
AR3157SP	AR3157WSP	48	2258	750	1070	915	1701 / 3750	1021 / 2250	907 / 2000	✓	✓
AR3307SP	AR3307WSP	48	2258	600	1200	1048	1701 / 3750	1021 / 2250	907 / 2000	✓	✓
AR3357SP	-	48	2258	750	1200	1048	1701 / 3750	1021 / 2250	907 / 2000	✓	✓

Essential Server Racks

NetShelter SV Enclosures



Model (assembled)	Model (unassembled)	Rack Units	Height (mm)	Width (mm)	Depth (mm)	Max Equipment Depth (mm)	Static Load (kg / lb.)	Dynamic Load (kg / lb.)	Doors	Sides
AR2400	AR2400FP1	42	2057	600	1070	777	1000 / 2205	460 / 1014	✓	✓
AR2401	-	42	2057	600	1070	777	1000 / 2205	460 / 1014	✓	✗
AR2480	-	42	2057	800	1070	777	1000 / 2205	460 / 1014	✓	✓
AR2500	-	42	2057	600	1200	917	1000 / 2205	460 / 1014	✓	✓
AR2580	-	42	2057	800	1200	917	1000 / 2205	460 / 1014	✓	✓
AR2407	-	48	2324	600	1070	777	1000 / 2205	460 / 1014	✓	✓
AR2487	-	48	2324	800	1070	777	1000 / 2205	460 / 1014	✓	✓
AR2507	-	48	2324	600	1200	917	1000 / 2205	460 / 1014	✓	✓
AR2587	-	48	2324	800	1200	917	1000 / 2205	460 / 1014	✓	✓

Rack PDU Series Comparison

Rack Series Comparison

..... Rack PDU Series

Advanced

AP

Premium

PR

Essential

EP

Security & Control

SC

..... Rack Series

Premium

SX

Essential

SV

Soundproof

SP

Wall-mount

WX

2-Post & 4-Post

OF

Seismic, Colo & AV

CM

Custom & Configured

CC

Rugged

RX

Shock Packaging & Pallet

SH

..... Accessories & Upgrades

Airflow & Cabling

AC

Security & Access

SA

..... Index

Product Index

PX



Product Index

Essential Server Racks
APC Easy Racks



Model	Rack Units	Height (mm)	Width (mm)	Depth (mm)	Max Equipment Depth (mm)	Static Load (kg / lb.)	Dynamic Load (kg / lb.)	Doors	Sides
ER6482	24	1198	600	800	641	1197 / 2640	599 / 1320	✓	✓
ER6402	24	1198	600	1000	838	1197 / 2640	599 / 1320	✓	✓
ER6422	24	1198	600	1200	1041	1197 / 2640	599 / 1320	✓	✓
ER6282	42	1991	600	800	641	1197 / 2640	599 / 1320	✓	✓
ER8282	42	1991	800	800	641	1197 / 2640	599 / 1320	✓	✓
ER6202	42	1991	600	1000	838	1197 / 2640	599 / 1320	✓	✓
ER6202FP7**	42	1991	600	1000	838	1197 / 2640	599 / 1320	✓	✓
ER6202FP1*	42	1991	600	1000	838	1197 / 2640	599 / 1320	✓	✓
ER6200	42	1991	600	1000	838	1197 / 2640	599 / 1320	✓	✗
ER8202	42	1991	800	1000	838	1197 / 2640	599 / 1320	✓	✓
ER8202FP7**	42	1991	800	1000	838	1197 / 2640	599 / 1320	✓	✓
ER8200	42	1991	800	1000	838	1197 / 2640	599 / 1320	✓	✗
ER6212	42	1991	600	1100	940	1197 / 2640	599 / 1320	✓	✓
ER8212	42	1991	800	1100	940	1197 / 2640	599 / 1320	✓	✓
ER6222	42	1991	600	1200	1041	1197 / 2640	599 / 1320	✓	✓
ER6222FP7**	42	1991	600	1200	1041	1197 / 2640	599 / 1320	✓	✓
ER6220	42	1991	600	1200	1041	1197 / 2640	599 / 1320	✓	✗
ER8222	42	1991	800	1200	1041	1197 / 2640	599 / 1320	✓	✓
ER8222FP7**	42	1991	800	1200	1041	1197 / 2640	599 / 1320	✓	✓
ER8220	42	1991	800	1200	1041	1197 / 2640	599 / 1320	✓	✗
ER6802	48	2258	600	1000	838	1197 / 2640	599 / 1320	✓	✓
ER6800	48	2258	600	1000	838	1197 / 2640	599 / 1320	✓	✗
ER8802	48	2258	800	1000	838	1197 / 2640	599 / 1320	✓	✓
ER8800	48	2258	800	1000	838	1197 / 2640	599 / 1320	✓	✗
ER6812	48	2258	600	1100	940	1197 / 2640	599 / 1320	✓	✓
ER8812	48	2258	800	1100	940	1197 / 2640	599 / 1320	✓	✓
ER6822	48	2258	600	1200	1041	1197 / 2640	599 / 1320	✓	✓
ER6822FP7**	48	2258	600	1200	1041	1197 / 2640	599 / 1320	✓	✓
ER6820	48	2258	600	1200	1041	1197 / 2640	599 / 1320	✓	✗
ER8822	48	2258	800	1200	1041	1197 / 2640	599 / 1320	✓	✓
ER8822FP7**	48	2258	800	1200	1041	1197 / 2640	599 / 1320	✓	✓
ER8820	48	2258	800	1200	1041	1197 / 2640	599 / 1320	✓	✗

*Unassembled and flatpacked rack option and must be assembled onsite.

**Unassembled and flatpacked rack option and must be assembled onsite. Available in 7 units in one set for India.

Rack PDU Series Comparison

Rack Series Comparison

..... Rack PDU Series

Advanced

AP

Premium

PR

Essential

EP

Security & Control

SC

..... Rack Series

Premium

SX

Essential

SV

Soundproof

SP

Wall-mount

WX

2-Post & 4-Post

OF

Seismic, Colo & AV

CM

Custom & Configured

CC

Rugged

RX

Shock Packaging & Pallet

SH

..... Accessories & Upgrades

Airflow & Cabling

AC

Security & Access

SA

..... Index

Product Index

PX



Product Index



GO Rack

GO Rack with perforated door

Model	Rack Units	Width (mm)	Depth (mm)	Max Equipment Depth (mm)	Static Load (kg / lb.)	Dynamic Load (kg / lb.)	Fan Ventilation	Perforated Doors	Glass Doors
NR8282-P	42	800	800	585	272 / 600	163 / 360	Sold separately	✓	✗
NR6282-P	42	600	800	585	272 / 600	163 / 360	Sold separately	✓	✗
NR8202-P	42	800	1000	785	272 / 600	163 / 360	Sold separately	✓	✗
NR6202-P	42	600	1000	785	272 / 600	163 / 360	Sold separately	✓	✗
NR8682-P	36	800	800	585	272 / 600	163 / 360	Sold separately	✓	✗
NR6682-P	36	600	800	585	272 / 600	163 / 360	Sold separately	✓	✗
NR8602-P	36	800	1000	785	272 / 600	163 / 360	Sold separately	✓	✗
NR6602-P	36	600	1000	785	272 / 600	163 / 360	Sold separately	✓	✗
NR8482-P	24	800	800	585	272 / 600	163 / 360	Sold separately	✓	✗
NR6482-P	24	600	800	585	272 / 600	163 / 360	Sold separately	✓	✗
NR8402-P	24	800	1000	785	272 / 600	163 / 360	Sold separately	✓	✗
NR6402-P	24	600	1000	785	272 / 600	163 / 360	Sold separately	✓	✗
NR8882-P	18	800	800	585	272 / 600	163 / 360	Sold separately	✓	✗
NR6882-P	18	600	800	585	272 / 600	163 / 360	Sold separately	✓	✗
NR8802-P	18	800	1000	785	272 / 600	163 / 360	Sold separately	✓	✗
NR6802-P	18	600	1000	785	272 / 600	163 / 360	Sold separately	✓	✗



GO Rack

GO Rack with glass door

Model	Rack Units	Width (mm)	Depth (mm)	Max Equipment Depth (mm)	Static Load (kg / lb.)	Dynamic Load (kg / lb.)	Fan Ventilation	Perforated Doors	Glass Doors
NR8282-G	42	800	800	585	272 / 600	163 / 360	Sold separately	✗	✓
NR6282-G	42	272 / 600	800	585	272 / 600	163 / 360	Sold separately	✗	✓
NR8202-G	42	800	1000	785	272 / 600	163 / 360	Sold separately	✗	✓
NR6202-G	42	272 / 600	1000	785	272 / 600	163 / 360	Sold separately	✗	✓
NR8682-G	36	800	800	585	272 / 600	163 / 360	Sold separately	✗	✓
NR6682-G	36	272 / 600	800	585	272 / 600	163 / 360	Sold separately	✗	✓
NR8602-G	36	800	1000	785	272 / 600	163 / 360	Sold separately	✗	✓
NR6602-G	36	272 / 600	1000	785	272 / 600	163 / 360	Sold separately	✗	✓
NR8482-G	24	800	800	585	272 / 600	163 / 360	Sold separately	✗	✓
NR6482-G	24	272 / 600	800	585	272 / 600	163 / 360	Sold separately	✗	✓
NR8402-G	24	800	1000	785	272 / 600	163 / 360	Sold separately	✗	✓
NR6402-G	24	272 / 600	1000	785	272 / 600	163 / 360	Sold separately	✗	✓
NR8882-G	18	800	800	585	272 / 600	163 / 360	Sold separately	✗	✓
NR6882-G	18	272 / 600	800	585	272 / 600	163 / 360	Sold separately	✗	✓
NR8802-G	18	800	1000	785	272 / 600	163 / 360	Sold separately	✗	✓
NR6802-G	18	272 / 600	1000	785	272 / 600	163 / 360	Sold separately	✗	✓

Rack PDU Series Comparison

Rack Series Comparison

..... Rack PDU Series

Advanced

AP

Premium

PR

Essential

EP

Security & Control

SC

..... Rack Series

Premium

SX

Essential

SV

Soundproof

SP

Wall-mount

WX

2-Post & 4-Post

OF

Seismic, Colo & AV

CM

Custom & Configured

CC

Rugged

RX

Shock Packaging & Pallet

SH

..... Accessories & Upgrades

Airflow & Cabling

AC

Security & Access

SA

..... Index

Product Index

PX



Product Index

Specialty Racks

NetShelter Soundproof Racks



Model (110-120 V)	Model (220-240 V)	Rack Units	Height (mm)	Width (mm)	Depth (mm)	Max Equipment Depth (mm)	Static Load (kg / lb.)	Dynamic Load (kg / lb.)	Cooling Capacity (kW)	Sound Reduction (dBA @ 1m)
AR4012A*		12	783	750	1130	834	838 / 1848	748 / 1650	1.2	18.85
AR4017A	AR4017IA	17	1000	750	1130	834	838 / 1848	748 / 1650	1.2	18.85
AR4032A	AR4032IA	32	1666	750	1130	834	1497 / 3300	748 / 1650	2.4	18.85
AR4038LA	AR4038LIA	38	1863	750	1130	834	1497 / 3300	748 / 1650	3.6	18.85

All models are configured with locking front, rear and side panel, built-in PDU, cable manager with brush strips, casters and leveling feet and are UL certified with a 2 year warranty.

*Dual-rated 110-240 V



Wall-mount Racks

NetShelter Wall-mount Enclosures

Model (assembled)	Model (unassembled)	Rack Units	Height (mm)	Width (mm)	Depth (mm)	Max Equipment Depth (mm)	Static Load (kg / lb.)	Ventilation	Door Type*	Rating
SWITCH DEPTH										
AR106SH4	AR106	6	355	600	400	329 / 341	91 / 200	Passive	Perforated	IP20
AR109SH4	AR109	9	485	600	400	329 / 341	91 / 200	Passive	Perforated	IP20
AR112SH4		12	620	600	400	329 / 341	91 / 200	Passive	Perforated	IP20
SERVER DEPTH										
AR106SH6		6	355	600	600	529	91 / 200	Passive	Perforated	IP20
AR109SH6		9	485	600	600	529	91 / 200	Passive	Perforated	IP20
AR112SH6	AR112	12	620	600	600	529 / 541	91 / 200	Passive	Perforated	IP20
AR100		13	663	600	631	394	91 / 200	Passive	Glass	IP20
AR100HD		13	663	600	631	394	91 / 200	Passive	Perforated	IP20
UPS DEPTH										
AR112SM		12	662	600	1019	835	158 / 350	Passive	Perforated	IP2X
AR118SM		18	889	600	1019	835	158 / 350	Passive	Perforated	IP2X
AR124SM		24	1156	600	1019	835	158 / 350	Passive	Perforated	IP2X
VERTICAL/LOW PROFILE										
AR106V		6	648	965	631	762	113 / 250	Fan (120V)	Perforated	IP20
AR106VI		6	648	965	631	762	113 / 250	Fan (230V)	Perforated	IP20



Specialty Racks

2-Post and 4-Post Open Frame Racks

Model	Rack Units	Height (mm)	Width (mm)	Depth (mm)	Max Equipment Depth (mm)	Static Load (kg / lb.)	Hole Type
4 POST RACK							
AR203A	44	2130	600	747	740	907 / 2000	Square
AR204A	44	2130	600	747	740	907 / 2000	#12-24 Threaded
2 POST RACK							
AR201	45	2136	513	376	1048	340 / 750	#12-24 Threaded

Rack PDU Series Comparison

Rack Series Comparison

..... Rack PDU Series

Advanced

AP

Premium

PR

Essential

EP

Security & Control

SC

..... Rack Series

Premium

SX

Essential

SV

Soundproof

SP

Wall-mount

WX

2-Post & 4-Post

OF

Seismic, Colo & AV

CM

Custom & Configured

CC

Rugged

RX

Shock Packaging & Pallet

SH

..... Accessories & Upgrades

Airflow & Cabling

AC

Security & Access

SA

..... Index

Product Index

PX



Product Index



Specialty Racks

Seismic, Colo and AV Racks

Model	Rack Units	Height (mm)	Width (mm)	Depth (mm)	Max Equipment Depth (mm)	Static Load (kg / lb.)	Dynamic Load (kg/ lb.)	Features	Doors	Sides
AV AUDIO / VIDEO										
AR3814	24	1199	600	825	702	1361 / 3000	1021 / 2250	#12-24 Holes	✓	✗
AR3810	42	1991	600	825	679	1361 / 3000	1021 / 2250	#12-24 Holes	✗	✗
AR3812	42	1991	600	806	679	1361 / 3000	1021 / 2250	#12-24 Holes	✓	✓
SX MULTI-COMPARTMENT / COLOCATION										
AR3200B2	20 (x2)	1991	600	1070	915	1814 / 4000	1021 / 2250	2x20U compartments	✓	✓
VX SEISMIC										
AR2144BLK	42	2070	600	1070	934	454 kg / 1000 lb. seismic load		Seismic Zone 4	✓	✓
AR2145BLK	42	2070	600	1070	934	454 kg / 1000 lb. seismic load		Seismic Zone 4	✓	✗



Rugged Racks

NetShelter RX Enclosures

Model	Rack Units	Height (mm)	Width (mm)	Depth (mm)	Max Equipment Depth (mm)	Static Load (kg / lb.)	Rating	Ventilation	Door Type	Available in
NSYSFRSEDC20680	42	2100	600	800	652	399 / 880	NEMA 12	Sold separately	Solid	NAM
NSYSFRSEDC206100	42	2100	600	1000	852	399 / 880	NEMA 12	Sold separately	Solid	NAM
NSYSFRSEDC208100	42	2100	800	1000	852	399 / 880	NEMA 12	Sold separately	Solid	NAM
NSYSFRSEDC208120	42	2100	800	1200	1052	399 / 880	NEMA 12	Sold separately	Solid	NAM
AR5333	33	1641	762	1144	863	907 / 2000	NEMA 4	Sold separately	Solid	NAM
AR5333-2B	66	1641	1524	1144	863	1814 / 4000	NEMA 4	Sold separately	Solid	NAM
AR5333-3B	99	1641	2286	1144	863	2722 / 6000	NEMA 4	Sold separately	Solid	NAM
AR5342	42	2061	762	1144	863	907 / 2000	NEMA 4	Sold separately	Solid	NAM
AR5342-2B	84	2061	1524	1144	863	1814 / 4000	NEMA 4	Sold separately	Solid	NAM
AR5342-3B	126	2061	2286	1144	863	2722 / 6000	NEMA 4	Sold separately	Solid	NAM

Rack PDU Series Comparison

Rack Series Comparison

..... Rack PDU Series

Advanced

AP

Premium

PR

Essential

EP

Security & Control

SC

..... Rack Series

Premium

SX

Essential

SV

Soundproof

SP

Wall-mount

WX

2-Post & 4-Post

OF

Seismic, Colo & AV

CM

Custom & Configured

CC

Rugged

RX

Shock Packaging & Pallet

SH

..... Accessories & Upgrades

Airflow & Cabling

AC

Security & Access

SA


..... Index

Product Index

PX



Life Is n

Schneider
 Electric

Learn more today!

se.com

Schneider Electric
One Boston Place, Suite 2700
Boston, MA 02108
www.apc.com

© 2025 Schneider Electric. All Rights Reserved.
Life Is On Schneider Electric is a trademark and the property of Schneider Electric SE, its subsidiaries and affiliated companies.