

# Fișă tehnică produs

Specificatii



## Lumina de control, 24V AC/DC, verde

XA2EVB3LC

### Principale

gama de produse	Easy Harmony XA2
Tip produs sau componenta	Lampa pilot monolit
nume scurt al dispozitivului	XA2
diametrul de montaj	22,5 mm
forma a capului unitatii de semnalizare	Rotund
capac/operator sau culoare lentila	Verde
sursa de lumina	LED
baza bec	LED integral
[Us] tensiune nominala de alimentare	24 V c.a./c.c. 50/60 Hz

### Suplimentare

descriere borne ISO nr. 1	(X1-X2)PL
montare dispozitiv	Gaură de fixare 22.3 +0.4/0 conformitate cu SR EN 60947-5-1
centru de fixare	>= 30 x 40 mm (suport panou) metal - grosime: 1...6 mm >= 30 x 40 mm (suport panou) plastic - grosime: 2...6 mm
mod de fixare	Piuliță de fixare sub cap cuplu recomandat: 2,2 N.m (+/- 0.2 N.m)
marcaj	CCC CE
[Us] tensiune nominala de alimentare	24 V
conexiuni - borne	Borne cu surub, <= 2 x 1.5 mm <sup>2</sup> cu pini conformitate cu IEC 60947-1 Borne cu surub, 1 x 0.5...1 x 2.5 mm <sup>2</sup> fara terminale de cablu conformitate cu IEC 60947-1
forma a capului surubului	Cruce compatibil cu Philips Nr. 2 surubelnita Perforat compatibil cu plat Ø 4 mm surubelnita Perforat compatibil cu plat Ø 5.5 mm surubelnita
[Ui] tensiune nominala de izolatie	400 V (grad de poluare 3) conformitate cu IEC 60947-1
[Uimp] tensiune de tinere la impuls	6 kV conformitate cu IEC 60947-1
tip semnalizare	Stabil
limitele tensiunii de alimentare	0,8...1,2 V c.a./c.c.
consum de curent	<= 20 mA
durata de utilizare	40000 H la tensiunea nominală și 25 °C
inaltime	29 mm
latime	29 mm
adancime	53 mm

---

greutate produs	0,02 kg
-----------------	---------

---

## Mediu

---

temperatura ambietala pentru depozitare	-40...70 °C
temperatura ambietala de functionare	-25...70 °C
categorii de supratensiune	Class I conforming to IEC 536
grad de protectie IP	IP65 conforming to SR EN 60529
grad de protectie IK	IK05
standarde	SR EN 60947-5-1 GB 14048.5 GB 14048.1 IEC 60947-1 SR EN 60529 IEC 50102
certificari produs	CCC UE
rezistenta la vibratii	5 gn (f= 12...500 Hz) conforming to IEC 60068-2-6
rezistenta la socuri	30 gn (durata = 11 ms) pentru half sine wave acceleration conformitate cu IEC 60068-2-27

---

## Unitati de ambalare

---

Unitate de masura pentru prima forma de impachetare	PCE
Număr de produse în pachet	1
Inaltime prima forma de impachetare	2,800 cm
Latime prima forma de impachetare	2,800 cm
Lungime prima forma de impachetare	5,200 cm
Greutate colet(Lbs)	20,000 g

---

## Garanție contractuală

---

Garantie (in luni)	60
--------------------	----

---

Schneider Electric isi propune sa atinga nivelul Net Zero pana in 2050 prin parteneriate la nivelul lantului de aprovizionare, materiale cu impact mai redus si circularitate, prin campania „Use Better, Use Longer, Use Again” pentru a extinde durata de viata a produselor si reciclabilitatea.

[Environmental Data explicate >](#)

[Cum evaluam sustenabilitatea produselor >](#)

### **Amprenta de mediu**

Amprenta de carbon totala pe durata de viata	27 kg CO2 eq.
Amprenta de carbon a fazei de fabricație [A1–A3]	0.8 kg CO2 eq.
Amprenta de carbon a fazei de distribuție [A4]	0 kg CO2 eq.
Amprenta de carbon a fazei de instalare [A5]	0 kg CO2 eq.
Amprenta de carbon a fazei de utilizare [B2, B3, B4, B6]	26 kg CO2 eq.
Amprenta de carbon a fazei de sfârșit de viață [C1–C4]	0 kg CO2 eq.
Raport de mediu	<a href="#">Profilul ambiental al produsului</a>

### **Use Better**

#### **Materiale si ambalare**

Pachet cu carton reciclabil	Da
Ambalaj fara plastic	Da
Directiva RoHS a UE	<a href="#">Conform</a>
Regulamentul REACH	<a href="#">Referinta nu contine SVHC peste prag</a>

### **Use Longer**

#### **Prelungire durata de viata**

Reparare	Nu
----------	----

### **Use Again**

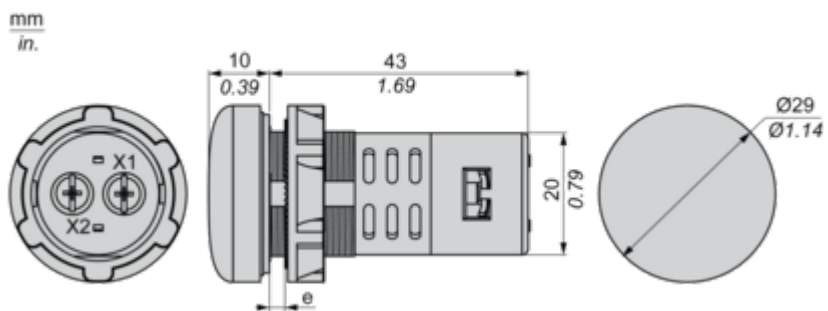
#### **Reambalare si refabricare**

Potentialul de reciclabilitate, in %	20
Profil circularitate	<a href="#">Informatii privind sfarsitul duratei de viata</a>
Preluare la sfarsitul duratei de viata	Da

Dimensions Drawings

Dimensions

---



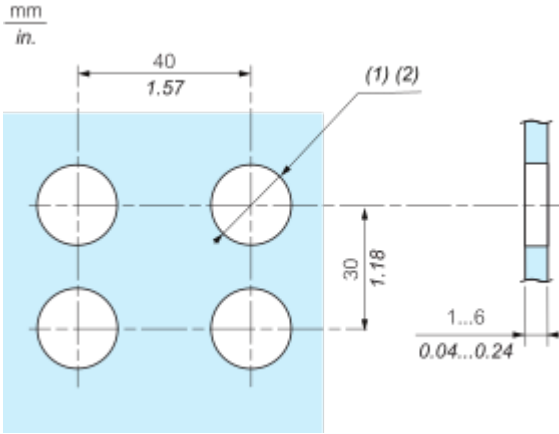
e : Clamping thickness: 1 to 6 mm/0.04 to 0.24 in.

Mounting and Clearance

Panel Cut-Out for Pushbuttons, Switches and Pilot Lights (Finished Holes, Ready for Installation)

---

Connection by Screw Clamp Terminals



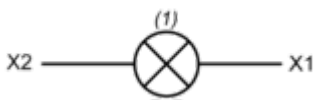
(1) Diameter on finished panel or support

(2)  $\varnothing 22.5 \text{ mm} / 0.89 \text{ in.}$  recommended ( $\varnothing 22.3 \text{ mm}_0^{+0.4} / 0.88 \text{ in.}_0^{+0.016}$ )

Connections and Schema

Wiring Diagram

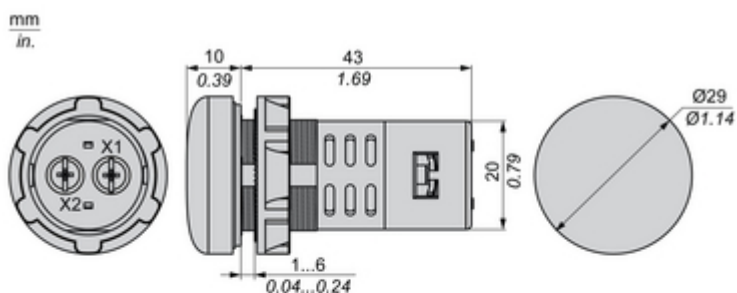
---



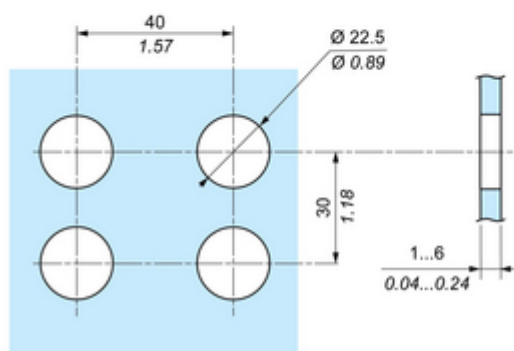
(1) LED

Technical Illustration

Dimensions



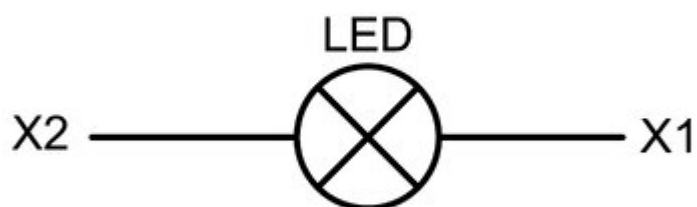
Panel Cut-Out



Technical Illustration

Wiring diagram

---



Offer Marketing Illustration

Product benefits / Features

---

**Features**  
Easy Harmony XA2

-  Cost effective plastic pushbuttons with metallic-look ring
-  Full function solution fit to customer needs
-  Modular design allows flexible and simple setup for complete products
-  Strong robustness and harsh environment protection
-  Wide availability throughout an extensive distribution network



Offer Marketing Illustration

Product benefits / Features

---

## Technical Features

### Easy Harmony XA2

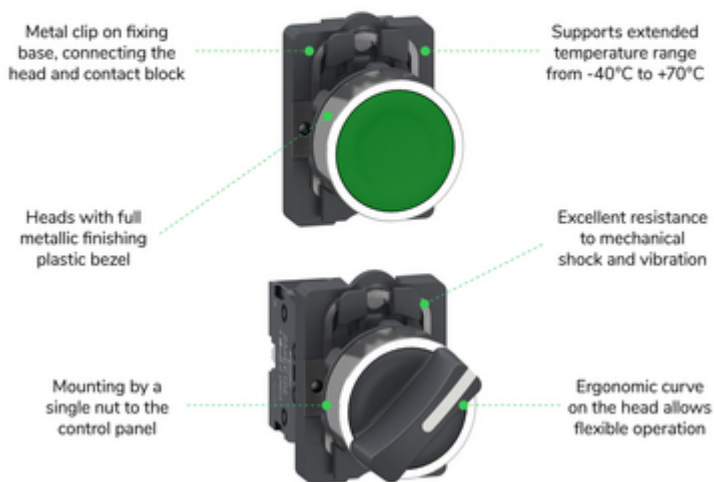
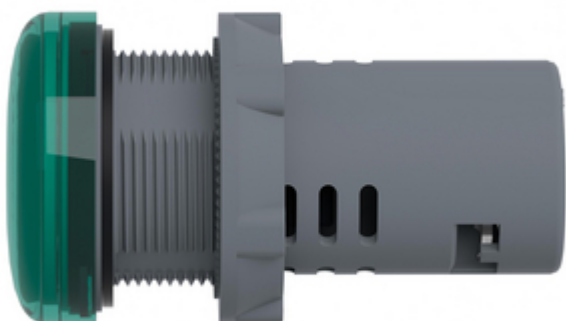


Image of product / Alternate images

Alternative

---



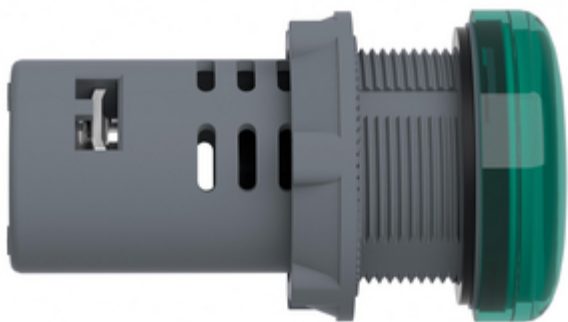




Image of product in real life situation

