

# Fișă tehnică produs

Specificatii



## Releu miniatura 3A,4C/O, fara LED, 230V C.A.

RXM4LB1P7

### Principale

gama de produse	Harmony Electromechanical Relays
nume serie	RXM series
Tip produs sau componenta	Releu conectabil
tip releu	Miniature relay
tip si compozitie contacte	4 C/O
tensiune circuit de comanda	230 V c.a. 50/60 Hz
[Ithe] curent termic conventional	3 A la -40...55 °C

### Suplimentare

LED de stare	Fara
tip de control	Fără buton de test cu blocare
[Ie] curent nominal de utilizare	1,5 A la 28 V (DC) NC conformitate cu IEC 1,5 A la 250 V (AC) NC conformitate cu IEC 3 A la 28 V (DC) nu conformitate cu IEC 3 A la 250 V (AC) nu conformitate cu IEC 3 A la 24 V (DC) nu conformitate cu IEC 3 A la 220 V (AC) nu conformitate cu IEC 3 A la 28 V (DC) conformitate cu UL 3 A la 250 V (AC) conformitate cu UL
capacitate minima de comutatie	25 mW subject to switching frequency, environment or expected reliability level etc
limite ale tensiunii nominale de functionare	184...253 V c.a.
[Ui] tensiune nominala de izolatie	250 V conformitate cu IEC
tensiunea maxima de comutatie	250 V c.a. 28 V c.c.
prag de tensiune pentru decuplare	$\geq 0.15 U_c$ c.a.
curent de sarcina	3 A la 250 V c.a. 3 A la 28 V c.c.
capacitate de comutatie maxima	750 VA c.a. 84 W c.c.
curentul minim de comutare	5 mA subject to switching frequency, environment or expected reliability level etc
tensiunea minima de comutare	5 V subject to switching frequency, environment or expected reliability level etc
rezistenta medie	16500 Ohm la 23 °C +/- 15 %
durabilitate mecanica	20000000 cic
durabilitate electrica	200000 cic rezistiv sarcina 23 °C 100000 cic rezistiv sarcina la 55 °C
fiabilitate securitate date	B10d = 100000

<b>rata de operare</b>	<= 1200 cicluri/oră sub sarcină <= 18000 cicluri/oră fara sarcina
<b>coeficient de utilizare</b>	20 %
<b>rigiditate dielectrica</b>	2000 V c.a. între bobină și contact cu Izolatie de baza izolație 2000 V c.a. între poli cu Izolatie de baza izolație 1000 V c.a. între contacte cu micro deconectare izolație
<b>categorie de protectie</b>	RT I
<b>Grad de poluare</b>	2
<b>pozitie de operare</b>	Orice pozitie
<b>niveluri de testare</b>	Nivel A group mounting
<b>cantitate indivizibila de vanzare</b>	10
<b>Material contacte</b>	Aliaj de argint (Ag/Ni)
<b>forma a pinului</b>	Flat (faston type)
<b>greutate produs</b>	0,032 kg

## Mediu

<b>standarde</b>	IEC 61810-1 (iss. 2) CE UL 60947-1
<b>temperatura ambietala pentru depozitare</b>	-40...85 °C
<b>rezistenta la vibratii</b>	3 gn, amplitudine = +/- 1 mm (f = 10...50 Hz)funcționare conformitate cu IEC 60068-2-6 6 gn, amplitudine = +/- 1 mm (f = 10...50 Hz)nu functioneaza conformitate cu IEC 60068-2-6
<b>rezistenta la socuri</b>	30 gn pentru nu functioneaza conformitate cu IEC 60068-2-27 10 gn pentru în functionare conformitate cu IEC 60068-2-27

## Unitati de ambalare

<b>Unitate de masura pentru prima forma de impachetare</b>	PCE
<b>Număr de produse în pachet</b>	1
<b>Inaltime prima forma de impachetare</b>	2,1 cm
<b>Latime prima forma de impachetare</b>	2,7 cm
<b>Lungime prima forma de impachetare</b>	4,5 cm
<b>Greutate colet(Lbs)</b>	33,0 g
<b>Unitate de masura pentru a doua forma de impachetare</b>	BB1
<b>Numar unitati in a doua forma de impachetare</b>	10
<b>Inaltime a doua forma de impachetare</b>	3 cm
<b>Latime a doua forma de impachetare</b>	11,5 cm
<b>Lungime a doua forma de impachetare</b>	10 cm
<b>Greutate a doua forma de impachetare</b>	390 g
<b>Unitate de masura pentru a treia forma de impachetare</b>	S02
<b>Numar unitati in a treia forma de impachetare</b>	270
<b>Inaltime a treia forma de impachetare</b>	15 cm

---

Latime a treia forma de impachetare	30 cm
--	-------

---

Lungime a treia forma de impachetare	40 cm
---	-------

---

Greutate a treia forma de impachetare	10,985 kg
--	-----------

---

## Garanție contractuală

---

Garantie (in luni)	18
--------------------	----

Schneider Electric isi propune sa atinga nivelul Net Zero pana in 2050 prin parteneriate la nivelul lantului de aprovizionare, materiale cu impact mai redus si circularitate, prin campania „Use Better, Use Longer, Use Again” pentru a extinde durata de viata a produselor si reciclabilitatea.

[Environmental Data explicate >](#)

[Cum evaluam sustenabilitatea produselor >](#)

### **Amprenta de mediu**

Amprenta de carbon totala pe durata de viata	20 kg CO2 eq.
Amprenta de carbon a fazei de fabricație [A1–A3]	0.3 kg CO2 eq.
Amprenta de carbon a fazei de distribuție [A4]	0 kg CO2 eq.
Amprenta de carbon a fazei de instalare [A5]	0 kg CO2 eq.
Amprenta de carbon a fazei de utilizare [B2, B3, B4, B6]	20 kg CO2 eq.
Amprenta de carbon a fazei de sfârșit de viață [C1–C4]	0 kg CO2 eq.
Raport de mediu	<a href="#">Profilul ambiental al produsului</a>

### **Use Better**

#### **Materiale si ambalare**

Pachet cu carton reciclabil	Da
Ambalaj fara plastic	Da
Directiva RoHS a UE	<a href="#">Conform</a>
Regulamentul REACH	<a href="#">Referinta nu contine SVHC peste prag</a>

### **Use Longer**

#### **Prelungire durata de viata**

Reparare	Nu
----------	----

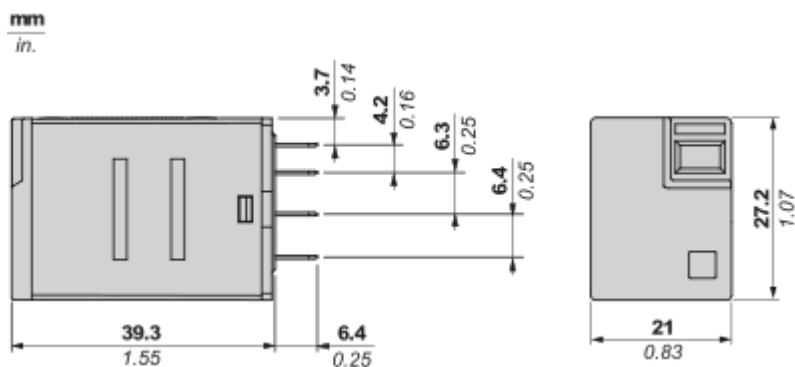
### **Use Again**

#### **Reambalare si refabricare**

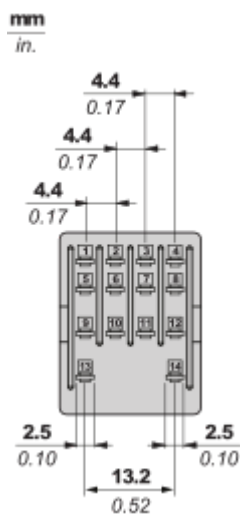
Profil circularitate	<a href="#">Informatii privind sfarsitul duratei de viata</a>
Preluare la sfarsitul duratei de viata	Da
Eticheta WEEE	 În Uniunea Europeana, produsele trebuie reciclate respectand sistemul specific de colectare a deseurilor si nu trebuie sa ajunga in pubelele de colectare a deseurilor menajere.

Dimensions Drawings

Dimensions



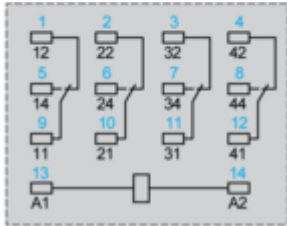
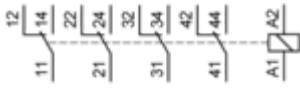
Pin Side View



## Connections and Schema

### Wiring Diagram

---



Symbols shown in blue correspond to Nema marking.

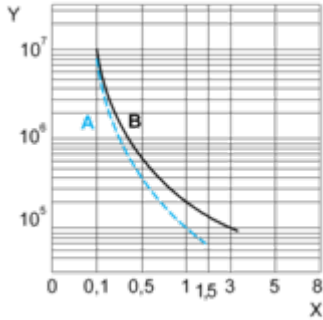
Performance Curves

Electrical Durability of Contacts

---

**Durability (inductive load) = durability (resistive load) x reduction coefficient.**

For 4 Poles Relay



**X** : Contact current (A)

**Y** : Durability (Number of operating cycles)

**A** : Inductive load

**B** : Resistive load

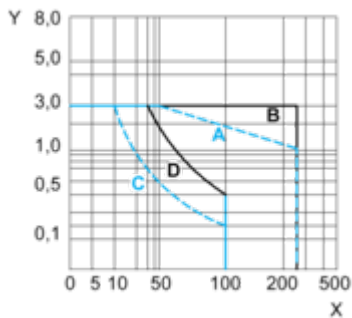
**Note** : These are typical curves, actual durability depends on load, environment, duty cycle, etc.

For inductive load, to increase relay life cycles, please add a proper load protection circuit (eg: RC protection/Varistor/free Wheeling diode -DC load only- )

**Maximum Switching Capacity**

---

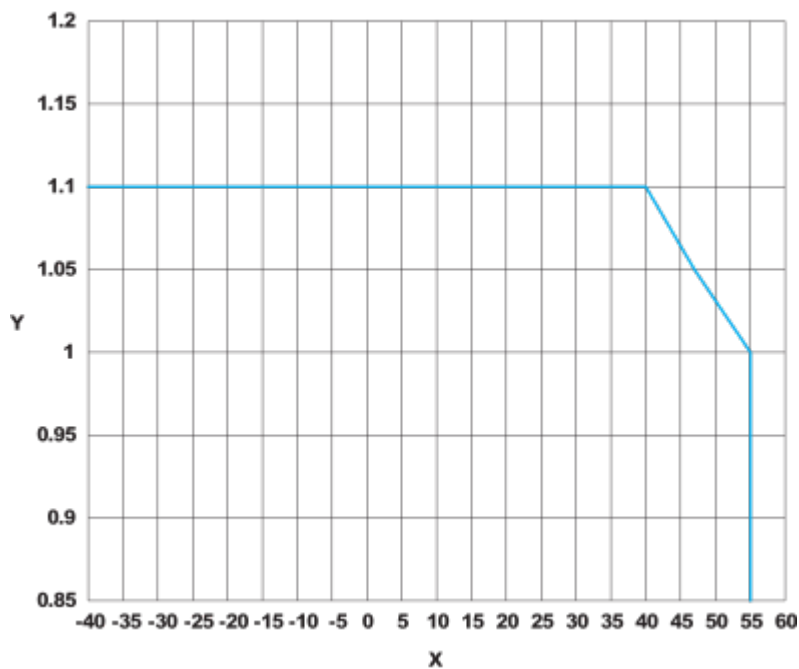
For 4 Poles Relay

**X** : Contact voltage (v)**Y** : Contact current (A)**A** : Inductive AC load**B** : Resistive AC load**C** : Inductive DC load**D** : Resistive DC load**Note** : These are typical curves, actual durability depends on load, environment, duty cycle, etc.

For inductive load, to increase relay life cycles, please add a proper load protection circuit (eg: RC protection/Varistor/free Wheeling diode -DC load only- )

For low level loads (below 10mA), we recommend to use RXM\*GB series with bifurcated contacts relays instead.

AC Coil Voltage and Operating Temperature under continuous duty

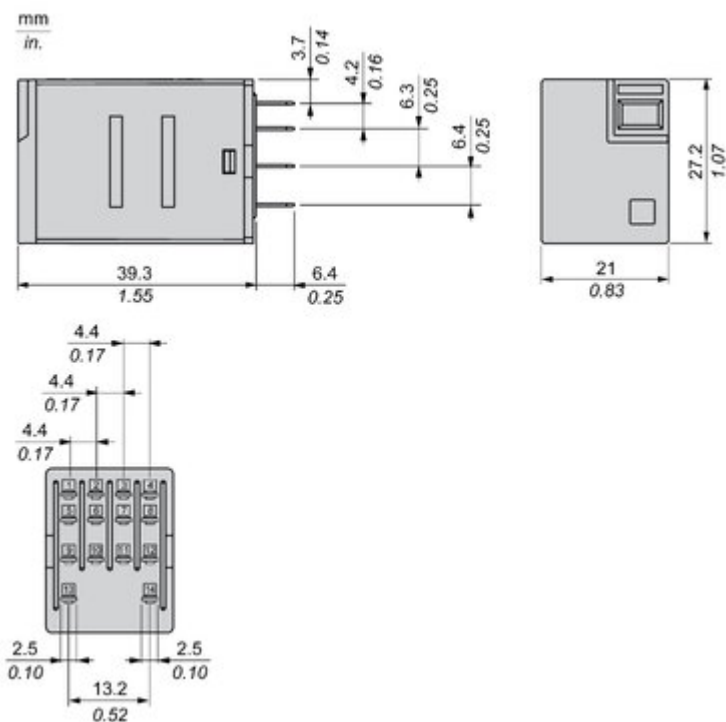


X : Operating temperature (°C)

Y : AC coil voltage (UC)

Technical Illustration

Dimensions



Offer Marketing Illustration

Product benefits / Features

---

The image is a green rectangular graphic with the title "Features" at the top center. Below the title is the subtitle "Easy Harmony RXMLB Relay". In the center of the graphic is a photograph of a black relay component. Surrounding the central image are four circular icons, each with a white background and a green symbol. Each icon is accompanied by a short text description of a feature. The features are: 1. Fit to customer needs (coverage of most general control panel applications), 2. Easy to select (simple selection and wide availability), 3. Convenient to use (easy status readiness through mechanical indicator & LED), and 4. Safe to perform (product reliability, compliance with industrial standard and eco-design).

### Features

Easy Harmony RXMLB Relay

-  Fit to customer needs  
coverage of most general  
control panel applications
-  Easy to select  
simple selection and  
wide availability
-  Convenient to use  
Easy status readiness  
through mechanical  
indicator & LED
-  Safe to perform  
product reliability,  
compliance with  
industrial standard  
and eco-design

Offer Marketing Illustration

Product benefits / Features

---

## Technical Benefits

### Easy Harmony RXMLB Relay

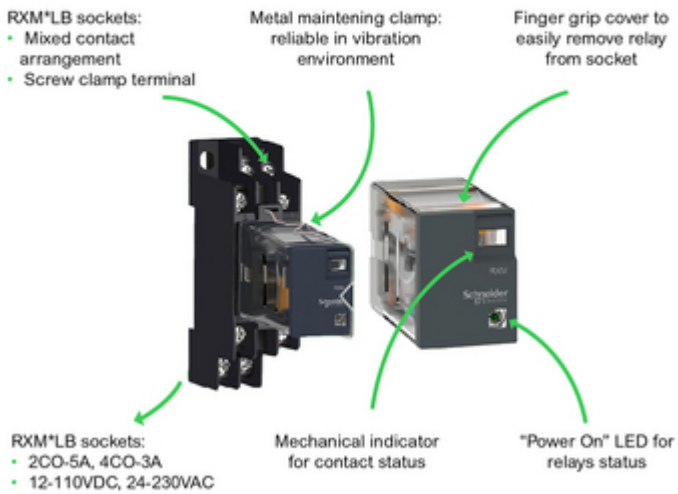


Image of product / Alternate images

Alternative

---

