

compact pin busbar, 10 mm², connection 1-pole/ N AFDD 5SM6 + compact device
1 MW + auxiliary switch 0.5 MW safe to touch 1m can be cut



product brand name	SENTRON
product designation	Pin busbar
design of the product	24x (1PH+N+HS)
design of the phase tap	L1/N
General technical data	
compatibility	for compact devices equipped with 5SM6 arc fault detection unit and auxiliary switch
design of pole	1P+N
phase number	2
operational current rated value	63 A
suitability for interaction devices with auxiliary switch	Yes
suitability for interaction devices with N conductor	Yes
color	light grey
Product details	
product component with end cap	No
product feature attachable arc fault detection device	Yes
product feature insulated	Yes
product function	
• suitable for compact devices	Yes
• can be cut	Yes
number of devices suitable for fitting	24
type of electrical connection	Pin
Mechanical Design	
module width	18 mm
height	13 mm
width	41 mm
length	1 036 mm
number of modular width units	58
cross-section	10 mm ²
angle of the pin of busbar	0°
Net Weight	392 g
Approvals Certificates	
Environment	General Product Approval

[Environmental Con-
firmations](#)

[Environmental Con-
firmations](#)

[Confirmation](#)



[Miscellaneous](#)



[Confirmation](#)

Further information

Information on the packaging

<https://support.industry.siemens.com/cs/ww/en/view/109813875>

Information for data generation and storage

<https://support.industry.siemens.com/cs/ww/en/view/109995012>

Information- and Downloadcenter (Catalogs, Brochures,...)

<https://www.siemens.com/lowvoltage/catalogs>

Industry Mall (Online ordering system)

<https://mall.industry.siemens.com/mall/en/en/Catalog/product?mlfb=5ST3780-0>

Service&Support (Manuals, Certificates, Characteristics, FAQs,...)

<https://support.industry.siemens.com/cs/ww/en/ps/5ST3780-0>

Image database (product images, 2D dimension drawings, 3D models, device circuit diagrams, ...)

https://www.automation.siemens.com/bilddb/cax_en.aspx?mlfb=5ST3780-0

CAx-Online-Generator

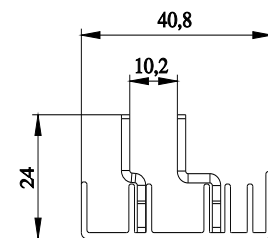
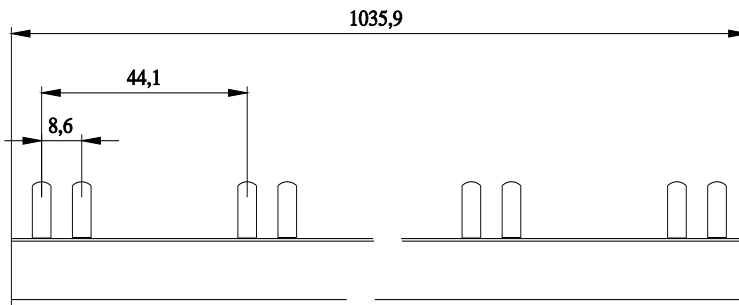
<https://www.siemens.com/cax>

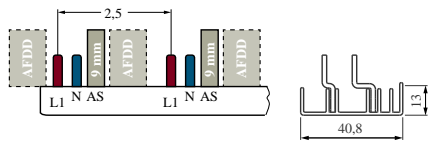
Tender specifications

<https://www.siemens.com/specifications>

Characteristic curves

[https://curves.simaris.siemens.com/curves/<mmp_prod_noCOMP="HAUPT"></mmp_prod_no>](https://curves.simaris.siemens.com/curves/<mmp_prod_noCOMP=)





last modified:

8/8/2025 

