

# Fișă tehnică produs

Specificatii



## Filtru iesire dv/dt pentru unitate viteza variabila, IP20

VW3A5302

### Principale

Tip produs sau componenta	Dv/dt filter
Compatibilitate gama	Altivar Process ATV900 Easy Altivar 610 Altivar Process ATV600 Altivar Machine ATV340
aplicatie specifica produsului	Filtru de iesire
[In] curent nominal	15 A
compatibilitate produs	ATV630 variable speed drive wall mount - 3 kW, 380...480 V ATV630 variable speed drive wall mount - 4 kW, 380...480 V ATV630 variable speed drive wall mount - 5,5 kW, 380...480 V ATV630 variable speed drive wall mount - 1,5 kW, 200...240 V ATV630 variable speed drive wall mount - 2,2 kW, 200...240 V ATV630 variable speed drive wall mount - 3 kW, 200...240 V ATV650 variable speed drive wall mount - 3 kW, 380...480 V ATV650 variable speed drive wall mount - 4 kW, 380...480 V ATV650 variable speed drive wall mount - 5,5 kW, 380...480 V ATV610 variable speed drive - 3 kW, 380...415 V ATV610 variable speed drive - 4 kW, 380...415 V ATV610 variable speed drive - 5,5 kW, 380...415 V ATV930 variable speed drive wall mount - 3 kW, 380...480 V ATV930 variable speed drive wall mount - 4 kW, 380...480 V ATV930 variable speed drive wall mount - 5,5 kW, 380...480 V ATV930 variable speed drive wall mount - 1,5 kW, 200...240 V ATV930 variable speed drive wall mount - 2,2 kW, 200...240 V ATV930 variable speed drive wall mount - 3 kW, 200...240 V ATV950 variable speed drive wall mount - 3 kW, 380...480 V ATV950 variable speed drive wall mount - 4 kW, 380...480 V ATV950 variable speed drive wall mount - 5,5 kW, 380...480 V
cantitate Incorporata	1
conexiune electrica	Bloc de conexiuni, capacitate conexiune: 6 mm <sup>2</sup> / AWG 10

### Suplimentare

lungimea maxima a cablului motorului	300 m cablu neecranat 300 m cablu ecranat
dv/dt	3000 V/μs maxim la 200...240 V 3000 V/μs maxim la 380...480 V
pierderi termice	38 W la 4 kHz
maximum drive output frequency	100 Hz
temperatura ambientala de utilizare	-10...50 °C (fără declasarea curentului) 50...60 °C (cu diminuarea curentului cu 1.5% par °C)
altitudinea de functionare	0...1000 m fără declasarea curentului 1000...4000 m cu declasarea curentului cu 1 % pe 100 m
latime	295 mm
inaltime	535 mm
adancime	215 mm

---

greutate produs	12 kg
-----------------	-------

## Mediu

---

grad de protectie IP	IP20 IP21 (with kit VW3A53902)
----------------------	-----------------------------------

---

temperatura ambietala pentru depozitare	-40...70 °C
---	-------------

## Unitati de ambalare

---

Unitate de masura pentru prima forma de impachetare	PCE
---	-----

---

Număr de produse în pachet	1
----------------------------	---

---

Inaltime prima forma de impachetare	36,600 cm
-------------------------------------	-----------

---

Latime prima forma de impachetare	39,000 cm
-----------------------------------	-----------

---

Lungime prima forma de impachetare	59,000 cm
------------------------------------	-----------

---

Greutate colet(Lbs)	18,800 kg
---------------------	-----------

---

Unitate de masura pentru a doua forma de impachetare	P06
--	-----

---

Numar unitati in a doua forma de impachetare	4
--	---

---

Inaltime a doua forma de impachetare	86,000 cm
--------------------------------------	-----------

---

Latime a doua forma de impachetare	60,000 cm
------------------------------------	-----------

---

Lungime a doua forma de impachetare	80,000 cm
-------------------------------------	-----------

---

Greutate a doua forma de impachetare	80,000 kg
--------------------------------------	-----------

## Garanție contractuală

---

Garantie (in luni)	18
--------------------	----

## Environmental Data

Schneider Electric își propune să atingă nivelul Net Zero până în 2050 prin parteneriate la nivelul lanțului de aprovizionare, materiale cu impact mai redus și circularitate, prin campania „Use Better, Use Longer, Use Again” pentru a extinde durata de viață a produselor și reciclabilitatea.


[Environmental Data explicate >](#)

[Cum evaluăm sustenabilitatea produselor >](#)


### Use Better

 <b>Materiale și ambalare</b>	
Pachet cu carton reciclabil	Nu
Ambalaj fără plastic	Nu
Directiva RoHS a UE	<a href="#">Conform</a>
Regulamentul REACH	<a href="#">Referința nu conține SVHC peste prag</a>

### Use Longer

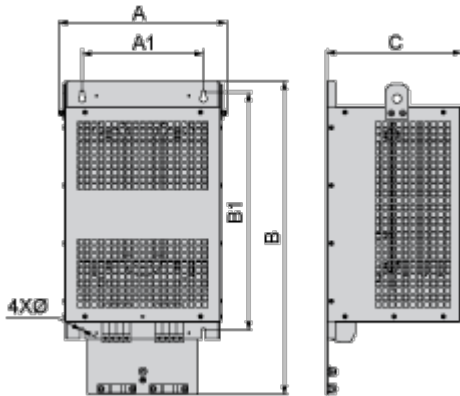
 <b>Prelungire durată de viață</b>	
Reparare	Nu

### Use Again

 <b>Reambalare și refabricare</b>	
Preluare la sfârșitul duratei de viață	Da

Dimensions Drawings

Dimensions



Dimensions in mm

A	B	C	A1	B1	Ø
285	520	215	210	411	7

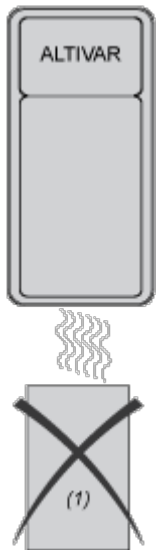
Dimensions in in.

A	B	C	A1	B1	Ø
11.2	20.5	8.5	8.3	16.2	0.28

Mounting and Clearance

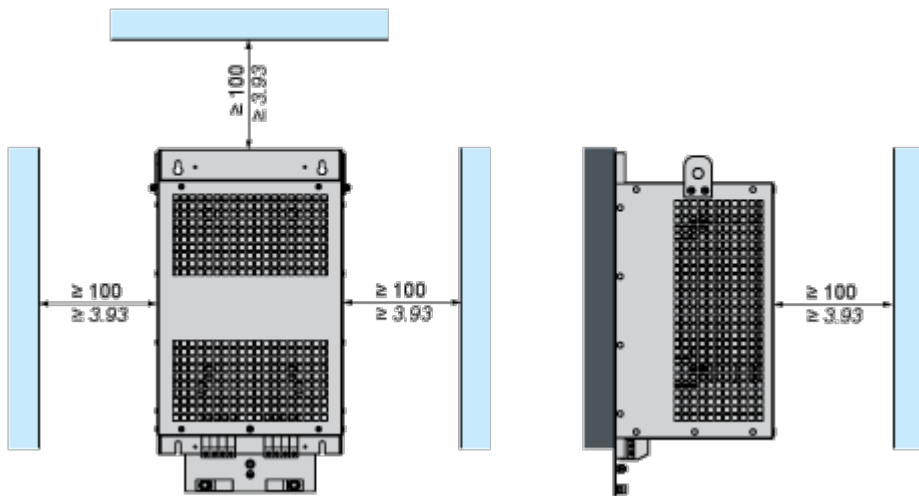
Mounting and Clearance

---



(1) Filter

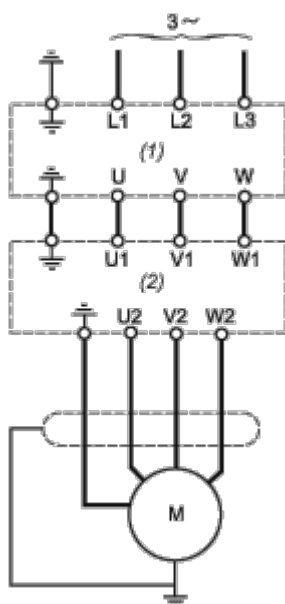
$\frac{mm}{in.}$



Connections and Schema

Recommended Schema

---



- (1) Drive
- (2) Filter