



Neutral conductor/PE terminal, continuous, for floor mounting, Up to 32 A, accessory for main and emergency switching-off switch 3LD2

Model	
product brand name	SETRON
product designation	Neutral conductor/PE terminal
design of the product	accessories for 3LD2 main and EMERGENCY-STOP switches
Accessories	
accessories	through-type, for floor mounting, up to 32 A
AWG number as coded connectable conductor cross section	
<ul style="list-style-type: none"> <li>• minimum</li> <li>• maximum</li> </ul>	14 8
type of connectable conductor cross-sections for main contacts	
<ul style="list-style-type: none"> <li>• finely stranded with core end processing</li> <li>• solid or stranded</li> </ul>	1x (1.5 ... 16 mm <sup>2</sup> ) 1x (1.5...10 mm <sup>2</sup> )
Mechanical Design	
Net Weight	34 g
Approvals Certificates	
Environment	General Product Approval

[Environmental Con-  
firmations](#)

[Environmental Con-  
firmations](#)



### Further information

Information on the packaging

<https://support.industry.siemens.com/cs/ww/en/view/109813875>

Information for data generation and storage

<https://support.industry.siemens.com/cs/ww/en/view/109995012>

Information- and Downloadcenter (Catalogs, Brochures,...)

<https://www.siemens.com/lowvoltage/catalogs>

Industry Mall (Online ordering system)

<https://mall.industry.siemens.com/mall/en/en/Catalog/product?mlfb=3LD9220-2C>

Service&Support (Manuals, Certificates, Characteristics, FAQs,...)

<https://support.industry.siemens.com/cs/ww/en/ps/3LD9220-2C>

Image database (product images, 2D dimension drawings, 3D models, device circuit diagrams, ...)

[https://www.automation.siemens.com/bilddb/cax\\_en.aspx?mlfb=3LD9220-2C](https://www.automation.siemens.com/bilddb/cax_en.aspx?mlfb=3LD9220-2C)

CAX-Online-Generator

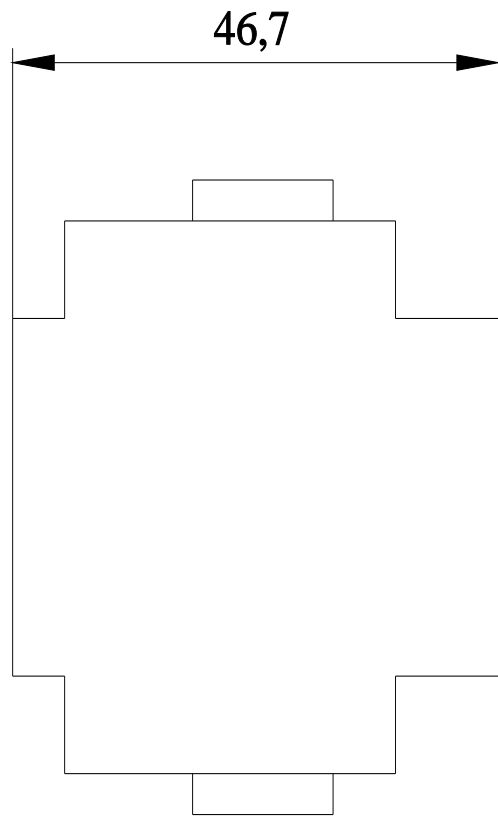
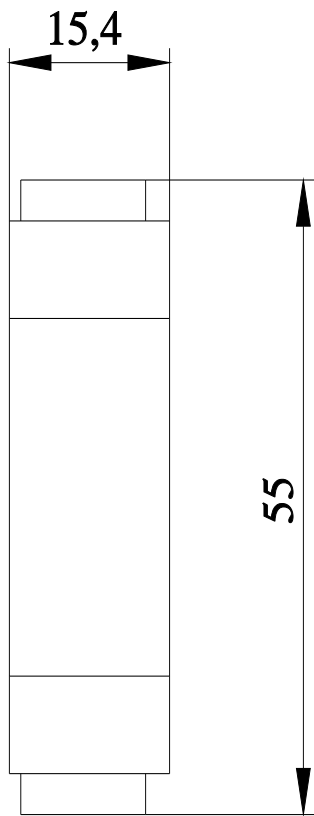
<https://www.siemens.com/cax>

Tender specifications

<https://www.siemens.com/specifications>

Characteristic curves

[https://curves.simaris.siemens.com/curves/<mmp\\_prod\\_noCOMP="HAUPT"></mmp\\_prod\\_no>](https://curves.simaris.siemens.com/curves/<mmp_prod_noCOMP=)



---

last modified:

4/12/2025 

