



Neutral conductor, leading switching for floor mounting, Up to 32 A,, Accessory for main and emergency stop switch 3LD2

Model	
product brand name	SETRON
product designation	Neutral conductor
design of the product	accessories for 3LD2 main and EMERGENCY-STOP switches
Accessories	
accessories	leading switching for floor mounting, up to 32 A
AWG number as coded connectable conductor cross section	
• minimum	14
• maximum	8
type of connectable conductor cross-sections for main contacts	
• finely stranded with core end processing	1x (1.5 ... 16 mm <sup>2</sup> )
• solid or stranded	1x (1.5...10 mm <sup>2</sup> )
Mechanical Design	
Net Weight	37.5 g
Approvals Certificates	
Environment	General Product Approval

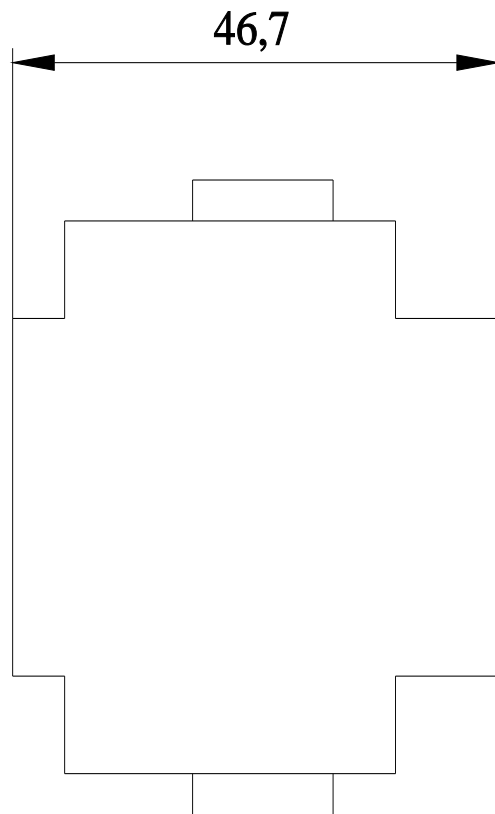
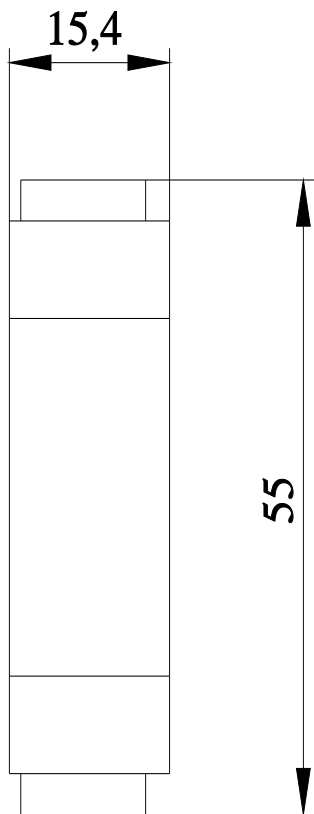
[Environmental Con-  
firmations](#)

[Environmental Con-  
firmations](#)



**Further information**

- Information on the packaging  
<https://support.industry.siemens.com/cs/ww/en/view/109813875>
- Information for data generation and storage  
<https://support.industry.siemens.com/cs/ww/en/view/109995012>
- Information- and Downloadcenter (Catalogs, Brochures,...)  
<https://www.siemens.com/lowvoltage/catalogs>
- Industry Mall (Online ordering system)  
<https://mall.industry.siemens.com/mall/en/en/Catalog/product?mlfb=3LD9220-0C>
- Service&Support (Manuals, Certificates, Characteristics, FAQs,...)  
<https://support.industry.siemens.com/cs/ww/en/ps/3LD9220-0C>
- Image database (product images, 2D dimension drawings, 3D models, device circuit diagrams, ...)  
[https://www.automation.siemens.com/bilddb/cax\\_en.aspx?mlfb=3LD9220-0C](https://www.automation.siemens.com/bilddb/cax_en.aspx?mlfb=3LD9220-0C)
- CAX-Online-Generator  
<https://www.siemens.com/cax>
- Tender specifications  
<https://www.siemens.com/specifications>
- Characteristic curves  
[https://curves.simaris.siemens.com/curves/<mmp\\_prod\\_noCOMP='HAUPT'></mmp\\_prod\\_no>](https://curves.simaris.siemens.com/curves/<mmp_prod_noCOMP='HAUPT'></mmp_prod_no>)



---

last modified:

4/12/2025 

